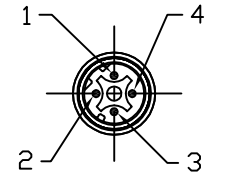
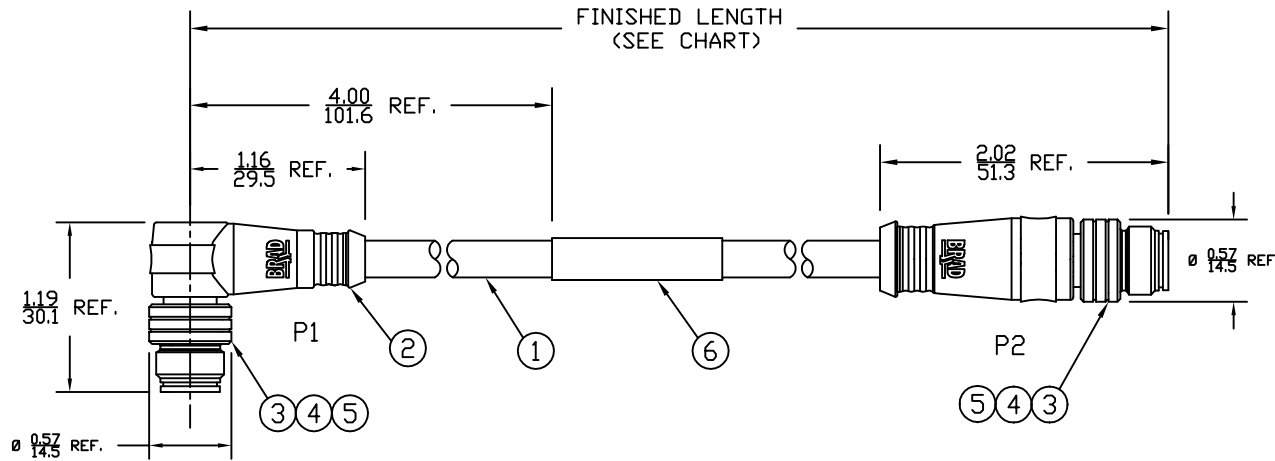
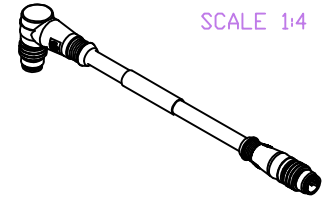
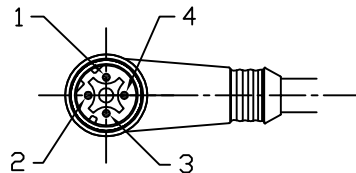


PART NUMBER	ENGINEERING NO.	LENGTH ± TOLERANCE
1300480153	E11A06215M010	3' 3" +2.19"/-0" [1M +55.6/-0 mm]
1300480155	E11A06215M050	16' 4" +6.5"/-0" [5M +165.0/-0 mm]

AUX VIEW
SCALE 1:4



MALE- FACE VIEW



MALE- FACE VIEW

P1		P2	
1	WHITE/DRG	1	
2	WHITE/GRN	2	
3	ORANGE	3	
4	GREEN	4	

WIRING DIAGRAM

NOTES:

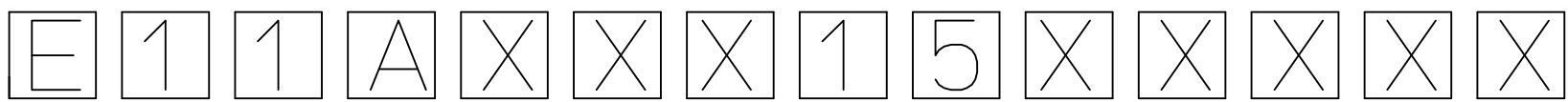
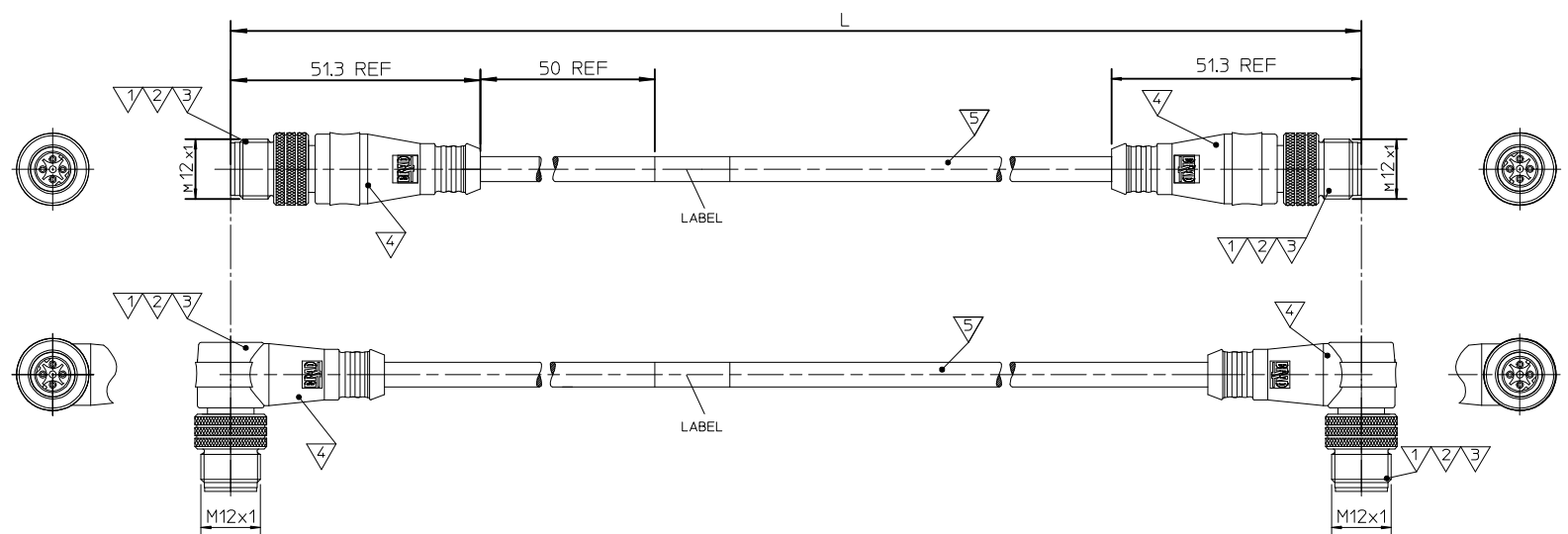
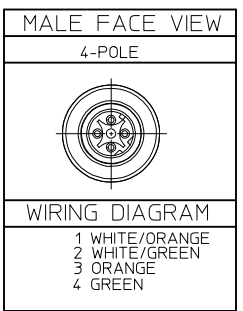
- 1) MATERIAL: SEE TABLE
- 2) FINISHES: SEE TABLE
- 3) CABLE: #26/4 SHIELDED PVC
- 4) ELECTRICAL DATA:
ACCORDING TO CAT5e ETHERNET STANDARD
MAX. VOLTAGE: 30V
MAX. CURRENT 1.5A
- 5) ENVIRONMENTAL:
PROTECTION IP67
TEMPERATURE RANGE: -20°C TO 75°C
- 6) WRAP LABEL IS MARKED WITH P/N, DATE CODE,
VOLTAGE & AMPERAGE.
- 7) ASSEMBLY IS RoHS COMPLIANT.

ITEM	QTY.	DESCRIPTION	MATERIAL	FINISH
6	1	LABEL	PLASTIC FILM	BLACK/YELLOW
5	2	INSERT	PUR	BLACK
4	8	PIN CONTACT	COPPER ALLOY	GOLD PLATED
3	2	M12 COUPLING NUT	BRASS	NICKEL
2	2	OVERMOLD	PUR	BLACK
1	1	ETHERNET CABLE-CAT5E	PVC JACKET	TEAL

SD RELEASE EC NO: MEL2010-0005 7/13/09 DRWN: VOU CHKD: BWOODMAN APPR: JFMURPHY 2009/07/20	QUALITY SYMBOLS	DESCRIPTION
	▽=0	
	▽C=0	
	1	

	GENERAL TOLERANCES (UNLESS SPECIFIED)	
	mm	INCH
4 PLACES	±----	±----
3 PLACES	±----	±.005
2 PLACES	±----	±.010
1 PLACE	±----	±.020
ANGULAR ± 1/2°		
DRAFT WHERE APPLICABLE MUST REMAIN WITHIN DIMENSIONS		

DIMENSION STYLE IN/MM		SCALE 3:4	DESIGN UNITS INCH	THIRD ANGLE PROJECTION
DRAWN BY VOU	DATE 2009/07/06	TITLE MICRO-CHANGE CABLE ASSY 4P M/MP ST/90 D-CODE #26/4 SHIELDED PVC		
CHECKED BY BWOODMAN	DATE 2009/07/31	MOLEX INCORPORATED		
APPROVED BY	DATE	MATERIAL NO.	DOCUMENT NO. SD-120108-023	SHEET NO. 1 OF 1
SIZE A	THIS DRAWING CONTAINS INFORMATION THAT IS PROPRIETARY TO MOLEX INCORPORATED AND SHOULD NOT BE USED WITHOUT WRITTEN PERMISSION			



Networ Protocol: E-Ethernet
 First and Second Connector: 1=M12 Threaded 4 Pole D-code
 Wiring Scheme: A=4 Pole
 HEAD TYPE: 060 Plugs male and male straight, 063 Plugs male 90° and male 90°
 Cable type: 26AWG, 7/34 STRANDED TINNED COPPER, PVC, TEAL
 LENGTH UNIT: C-cm, M-m, K-km, F-feet
 LENGTH: Example: 020 - 2M, 060 - 6M, 100 - 10M
 OPTIONS: D- Decoupled (for Shielded version only)

Over	Up to and including	Tolerance (+)
0	305	+19
305	915	+45
915	1830	+56
1830	3660	+89
3660	7320	+165
7320	14640	+317
14640	30500	+610
30500	>	2 % of length

CONNECTOR SPECIFICATION:

VOLTAGE RATING	max 30V
AMPERAGE RATING	1.5 A
PROTECTION	IP67
OPERATING TEMPERATURE	-20°C TO 75°C

ITEM	PART	MATERIAL	FINISH
5	CABLE	1302100082	---
4	OVERMOULDING	TPU UF NATURAL C98A10	---
4	OVERMOULDING	MASTERBATCH COLORANT	---
3	COUPLING NUT	SEE SPECIAL TYPES	---
2	PIN CONTACT	COPPER ALLOY	GOLD OR NICKEL PLATED
1	INSERT	PUR	BLACK

PN ADDED EC NO: IPG2014-1381 DRWINDSTACHOWIAK 2014/02/03 CHKD: JMARSZALEK 2014/02/03 APPR: MIWASIECZKO 2014/02/04	QUALITY SYMBOLS 	GENERAL TOLERANCES (UNLESS SPECIFIED) <table border="1"> <tr><th></th><th>mm</th><th>INCH</th></tr> <tr><td>4 PLACES</td><td>± ---</td><td>± ---</td></tr> <tr><td>3 PLACES</td><td>± ---</td><td>± ---</td></tr> <tr><td>2 PLACES</td><td>± ---</td><td>± ---</td></tr> <tr><td>1 PLACE</td><td>± ---</td><td>± ---</td></tr> <tr><td>0 PLACE</td><td>± ---</td><td>± ---</td></tr> </table>		mm	INCH	4 PLACES	± ---	± ---	3 PLACES	± ---	± ---	2 PLACES	± ---	± ---	1 PLACE	± ---	± ---	0 PLACE	± ---	± ---	DIMENSION STYLE MM ONLY DRAWN BY: MDYSZEWSKA DATE: 2012/11/24 CHECKED BY: HWALCZAK DATE: 2012/11/24 APPROVED BY: MIWASIECZKO DATE: 2013/01/21	SCALE --- DESIGN UNITS METRIC FIRST ANGLE PROJECTION	TITLE CSE ETH ETH 4P DC PVC XM DE SHLD NI
		mm	INCH																				
	4 PLACES	± ---	± ---																				
	3 PLACES	± ---	± ---																				
2 PLACES	± ---	± ---																					
1 PLACE	± ---	± ---																					
0 PLACE	± ---	± ---																					
ANGULAR ± --- ° DRAFT WHERE APPLICABLE MUST REMAIN WITHIN DIMENSIONS	SEE PAGE 2	DOCUMENT NO. SD-130048-006	SHEET NO. 1 OF 2																				
SIZE A3	THIS DRAWING CONTAINS INFORMATION THAT IS PROPRIETARY TO MOLEX INCORPORATED AND SHOULD NOT BE USED WITHOUT WRITTEN PERMISSION																						

SEE CHART 1

1300480009	E11A06015M030
1300480010	E11A06015M200
1300480011	E11A06015M400
1300480122	E11A06015M010
1300480124	E11A06015M020
1300480126	E11A06015M050
1300480128	E11A06015M100
1300480130	E11A06015M150
1300480132	E11A06015M300
1300480303	E11A06015M500
1300480304	E11A06015M680
1300488007	E11A06015M250
1300488012	E11A06015M040
1300488108	E11A06015M600
1300488109	E11A06015M800
1300480177	E11A06315M006
1300480179	E11A06315M010
1300480181	E11A06315M020
1300480183	E11A06315M050
1300480185	E11A06315M100
1300488073	E11A06315M030

PN ADDED EC NO: IPG2014-1381 DRWINGDSTACHOWIAK 2014/02/03 CHKD:JMARSZALEK 2014/02/03 APPR:MIWASIECZKO 2014/02/04	QUALITY SYMBOLS =0 =0	GENERAL TOLERANCES (UNLESS SPECIFIED)		DIMENSION STYLE MM ONLY		SCALE ---	DESIGN UNITS METRIC	FIRST ANGLE PROJECTION		
				DRAWN BY MDYSZEWSKA	DATE 2012/11/24	TITLE CSE ETH ETH 4P DC PVC XM DE SHLD NI				
				CHECKED BY HWALCZAK	DATE 2012/11/24	APPROVED BY MIWASIECZKO 2013/01/21				
				ANGULAR ±---°		MATERIAL NO. SEE CHART 1		DOCUMENT NO. SD-130048-006		SHEET NO. 2 OF 2
B1	REV	DRAFT WHERE APPLICABLE MUST REMAIN WITHIN DIMENSIONS		SIZE A3		THIS DRAWING CONTAINS INFORMATION THAT IS PROPRIETARY TO MOLEX INCORPORATED AND SHOULD NOT BE USED WITHOUT WRITTEN PERMISSION				