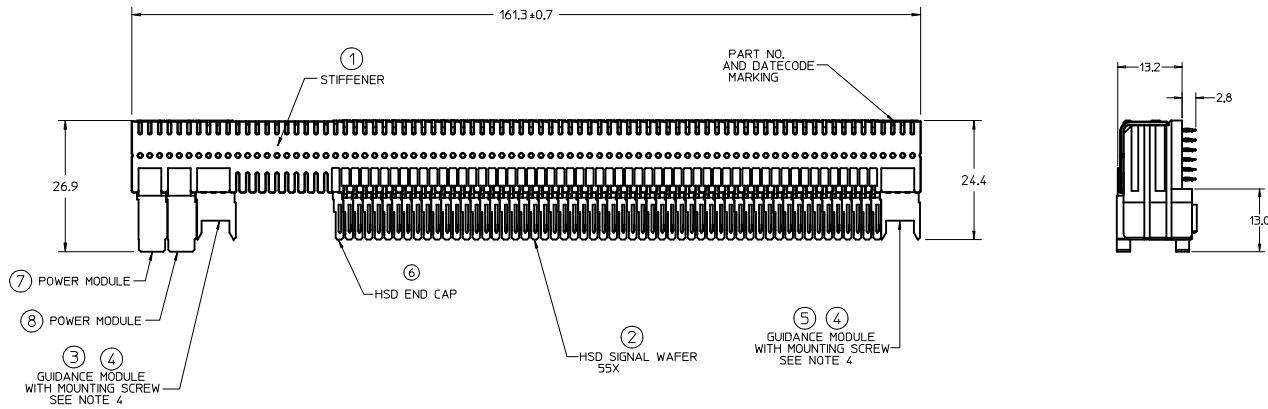
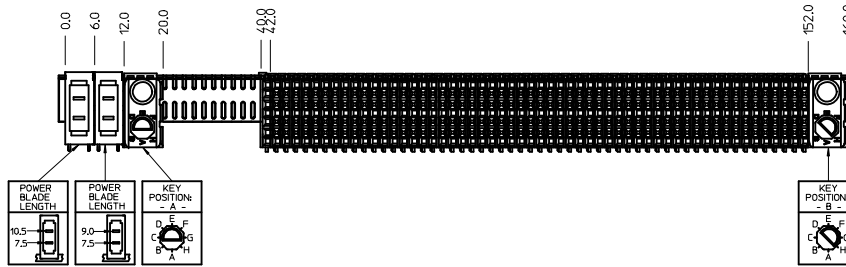


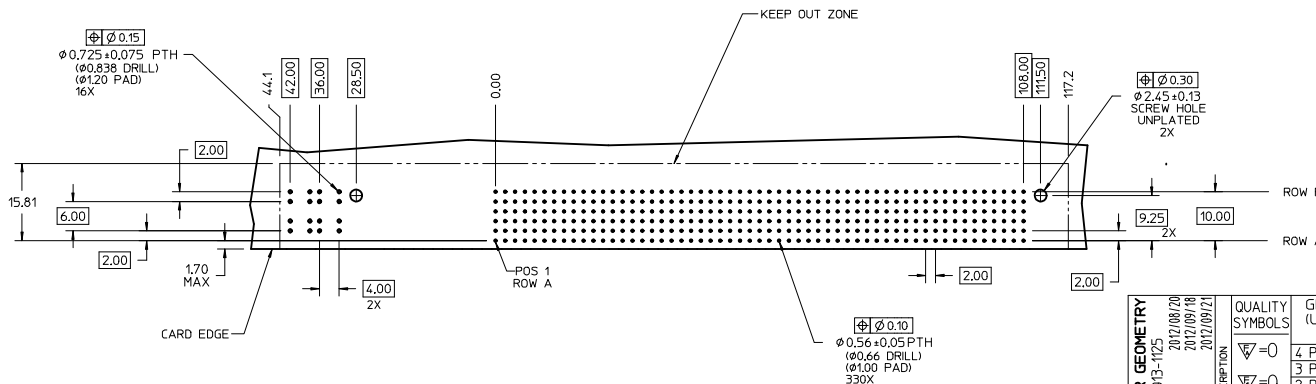
CUSTOMER: ALLIED TELESYN



- NOTES: (UNLESS OTHERWISE SPECIFIED)
- MATERIALS: HOUSING - LIQUID CRYSTAL POLYMER (LCP)  
GLASS-FILLED, UL94V-0, BLACK  
TERMINALS - HIGH PERFORMANCE COPPER ALLOY  
STIFFENER - STAINLESS STEEL
  - FINISH: SELECTIVE GOLD (Au) IN CONTACT AREA, 0.76 micrometers MINIMUM THICKNESS, SELECTIVE MATTE TIN (Sn) ON PCB TAILS, NICKEL (Ni) UNDERPLATE OVERALL.
  - REFER TO MOLEX PRODUCT SPECIFICATION PS-74031-999 FOR PERFORMANCE SPECIFICATIONS.
  - PARTS ARE PACKAGED IN TUBES PER PK-70873-5040. MOUNTING SCREWS WILL BE BAGGED WITH EACH CONNECTOR.
  - LABEL MARKED WITH MOLEX PART NUMBER AND DATE CODE. LABEL CAN BE REPLACED BY LASER MARK ON THE STIFFENER.
  - REFER TO MOLEX DOCUMENT SD-74881-002 FOR ADDITIONAL DETAIL ON THE HSD SIGNAL WAFER.
  - REFER TO MOLEX DOCUMENT SD-74037-005 FOR ADDITIONAL DETAIL ON THE GUIDANCE MODULE.
  - REFER TO MOLEX DOCUMENT SD-75885-001 FOR ADDITIONAL DETAIL ON THE POWER MODULE.
  - PRODUCT CONFORMS TO CLASS 'B' REQUIREMENTS OF MOLEX COSMETIC SPECIFICATION PS-45499-002.



ITEM	PART NUMBER	DESCRIPTION	QTY
1	74036-0161	STIFFENER	1
2	74881-1001	SIGNAL WAFER - HSD6, LF	55
3	74037-6001	POLARIZING/GUIDE MODULE	1
4	73726-0000	GUIDE MODULE MNTG SCREW	2
5	74037-6002	POLARIZING/GUIDE MODULE	1
6	74888-0001	END CAP - HSD6	1
7	75885-6130	POWER MODULE, LF	1
8	75885-6120	POWER MODULE, LF	1



DAUGHTERCARD HOLE PATTERN (CONNECTOR SIDE)

LEAD-FREE  
PLATING

REV WAFER GEOMETRY		QUALITY SYMBOLS		GENERAL TOLERANCES (UNLESS SPECIFIED)		DIMENSION STYLE		SCALE		DESIGN UNITS		THIRD ANGLE PROJECTION	
REV	DESCRIPTION	SYMBOL	PLACES	mm	INCH	MM ONLY	DATE	2:1	METRIC	TITLE			
1	2012/08/20	$\nabla=0$	4	±---	±---	LAURX	03/09/02			6 ROW HSD, LF DAUGHTERCARD SALES DRAWING			
2	2012/09/18	$\nabla=0$	3	±---	±---	CHECKED BY	DATE			molex			
3	2012/09/21	$\nabla=0$	2	±0.25	±---	MARTIN	03/09/02			SD-74880-004			
4		$\nabla=0$	1	±0.38	±---	APPROVED BY	DATE			1 OF 1			
5		$\nabla=0$	0	±---	±---	SMILLER	2012/03/22			THIS DRAWING CONTAINS INFORMATION THAT IS PROPRIETARY TO MOLEX INCORPORATED AND SHOULD NOT BE USED WITHOUT WRITTEN PERMISSION			
MATERIAL NO. 74880-0004		DOCUMENT NO. SD-74880-004		SIZE D								SHEET NO. 1 OF 1	