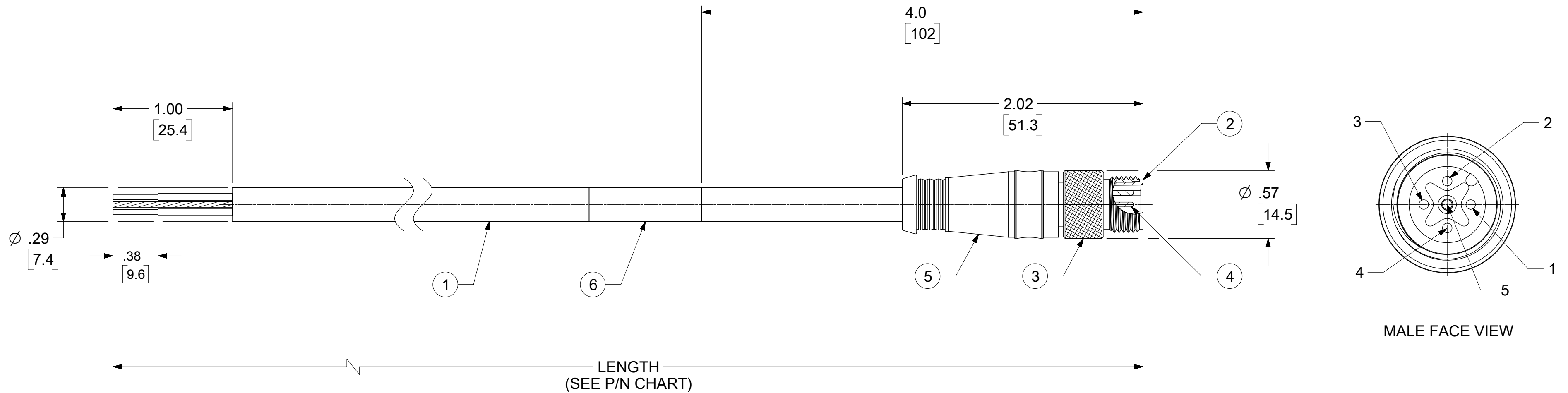
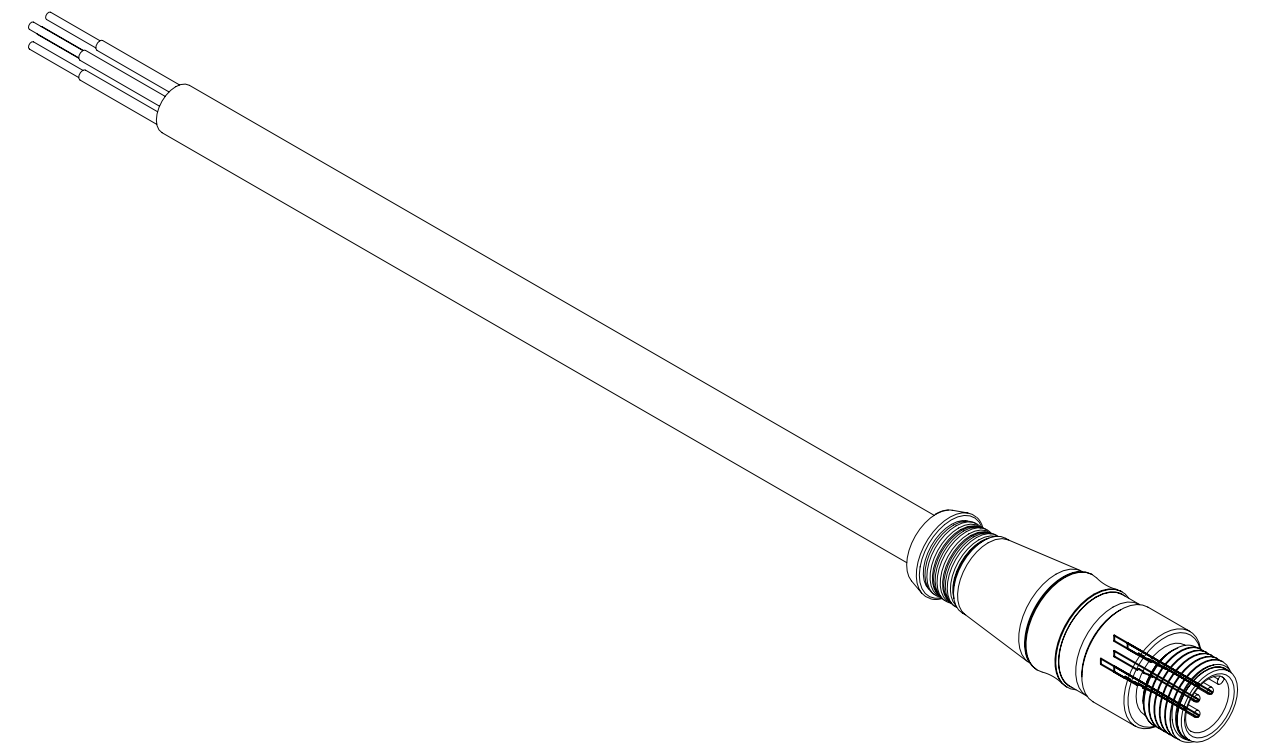


| PART NO.  | ENG. NO.   | LENGTH |
|-----------|------------|--------|
| 848548021 | 84854-8021 | 0.5M   |
| 848548022 | 84854-8022 | 1.0M   |
| 848548023 | 84854-8023 | 2.0M   |
| 848548024 | 84854-8024 | 3.0M   |
| 848548025 | 84854-8025 | 4.0M   |
| 848548026 | 84854-8026 | 5.0M   |
| 848548027 | 84854-8027 | 6.0M   |
| 848548036 | 84854-8036 | 10.0M  |

**CABLE LENGTH TOLERANCES**  
 >.3M [1FT]: +19mm-0 [ +.75in-0]  
 .3 - .9M [1 - 3FT]: +44.5mm-0 [+1.75in-0]  
 .9 - 1.8M [3 - 6FT]: +55.6mm-0 [+2.19in-0]  
 1.8 - 3.7M [6 - 12FT]: +88.9mm-0 [+3.50in-0]  
 3.7 - 7.3M [12 - 24FT]: +165.1mm-0 [+6.50in-0]  
 7.3-14.6M [24 - 48FT]: +317.5mm-0 [+12.50in-0]  
 14.6 - 30.5M [48-100FT]: +622.3mm-0 [+24.50in-0]  
 OVER 30M [100FT] +2% OF FINISHED LENGTH



- NOTES:**
1. MATERIAL: AS NOTED
  2. FINISH: AS NOTED
  3. ELECTRICAL:  
VOLTAGE: 250V  
CURRENT: 4A
  4. TEMP RATING: -20°TO +80°C
  5. PROTECTION: IP67 (WHEN MATED)
  6. COUPLING THREAD: M12 X 1.0
  7. ALL DIMS ARE FOR REFERENCE UNLESS TOLERANCED OR NOTED OTHERWISE

**MALE**

|             |   |
|-------------|---|
| DRAIN       | 1 |
| RED +V      | 2 |
| BLACK-V     | 3 |
| WHITE CAN H | 4 |
| BLUE CAN L  | 5 |

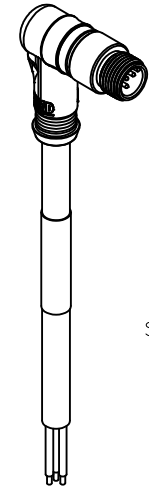
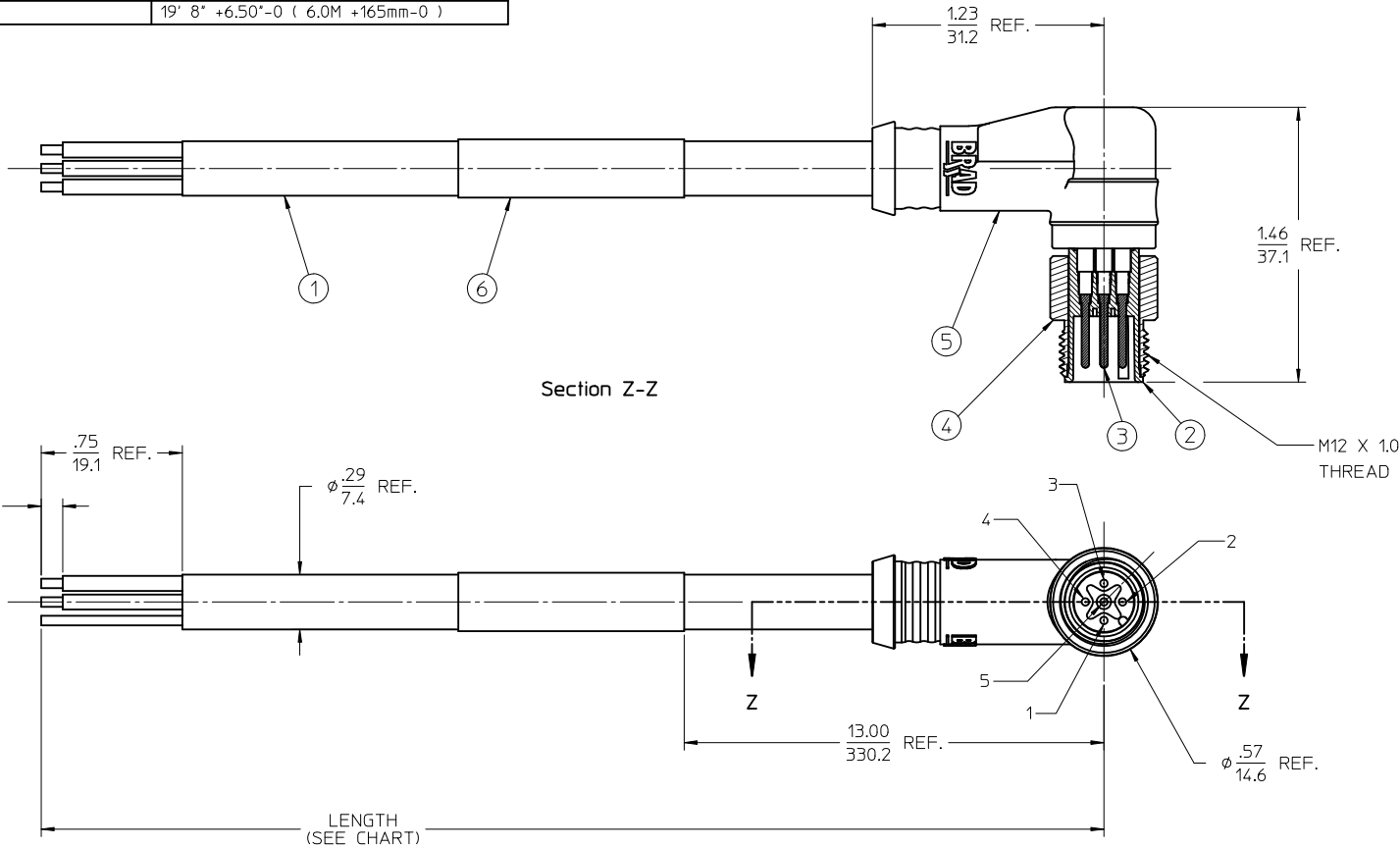
**WIRE DIAGRAM**

| ITEM | DESCRIPTION           | MATERIAL | FINISH        |
|------|-----------------------|----------|---------------|
| 6    | WRAP LABEL            | VINYL    | BLACK/YELLOW  |
| 5    | OVERMOLD              | TPC ©    | GRAY          |
| 4    | CONTACT PINS          | Cu ALLOY | GOLD PLATED   |
| 3    | COUPLING, MALE THREAD | BRASS    | NICKEL PLATED |
| 2    | INSULATOR, 5P, MALE   | NYLON    | BLACK         |
| 1    | CABLE, DEV-NET, 22AWG | PVC      | GRAY          |

THIS DRAWING CONTAINS INFORMATION THAT IS PROPRIETARY TO MOLEX ELECTRONIC TECHNOLOGIES, LLC AND SHOULD NOT BE USED WITHOUT WRITTEN PERMISSION

|  |        |   |                |
|--|--------|---|----------------|
| DIMENSION UNITS                                      | SCALE  | CURRENT REV DESC: OBSOLETE PART NUMBERS |                |
| INCH/MM  | 1.5:1  |   |                |
| GENERAL TOLERANCES (UNLESS SPECIFIED)                |        |   |                |
| ANGULAR TOL  | ± °    |   |                |
| 4 PLACES   | ±      | EC NO: 638770                           |                |
| 3 PLACES   | ±      | DRWN: RPRABHUM                          | 2020/04/22     |
| 2 PLACES   | ±      | CHK'D: GGA                              | 2020/07/21     |
| 1 PLACE  | ±      | APPR: GGA                               | 2020/07/21     |
| 0 PLACES   | ±      | INITIAL REVISION:                       |                |
| DRAFT WHERE APPLICABLE MUST REMAIN WITHIN DIMENSIONS |        | DRWN: RSTONE                            | 2007/08/20     |
| THIRD ANGLE PROJECTION                               |        | APPR: JMACNEIL                          | 2007/09/24     |
| DRAWING  | SERIES | MATERIAL NUMBER                         | CUSTOMER       |
| C-SIZE   | 84854  | SEE P/N CHART                           | GENERAL MARKET |
| DOCUMENT NUMBER                                      |        | DOC TYPE                                | DOC PART       |
| SD-84854-018   |        | PSD                                     | 001            |
| SHEET NUMBER   |        | REVISION                                |                |
| 1 OF 1   |        | D                                       |                |

| MATERIAL NO. | ENGINEERING NO. | MADE FROM                         |
|--------------|-----------------|-----------------------------------|
| 848548028    | 84854-8028      | 1' 8" +1.75"-0 ( .5M +45mm-0 )    |
| 848548029    | 84854-8029      | 3' 3" +2.19"-0 ( 1.0M +56mm-0 )   |
| 848548030    | 84854-8030      | 6' 7" +3.50"-0 ( 2.0M +89mm-0 )   |
|              |                 | 9' 10" +3.50"-0 ( 3.0M +89mm-0 )  |
| 848548031    | 84854-8031      | 13' 1" +6.50"-0 ( 4.0M +165mm-0 ) |
|              |                 | 16' 5" +6.50"-0 ( 5.0M +165mm-0 ) |
|              |                 | 19' 8" +6.50"-0 ( 6.0M +165mm-0 ) |



ISO1  
Scale 1:1

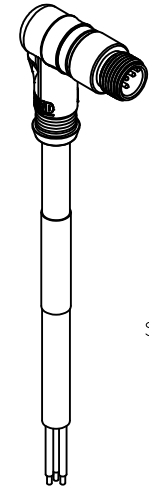
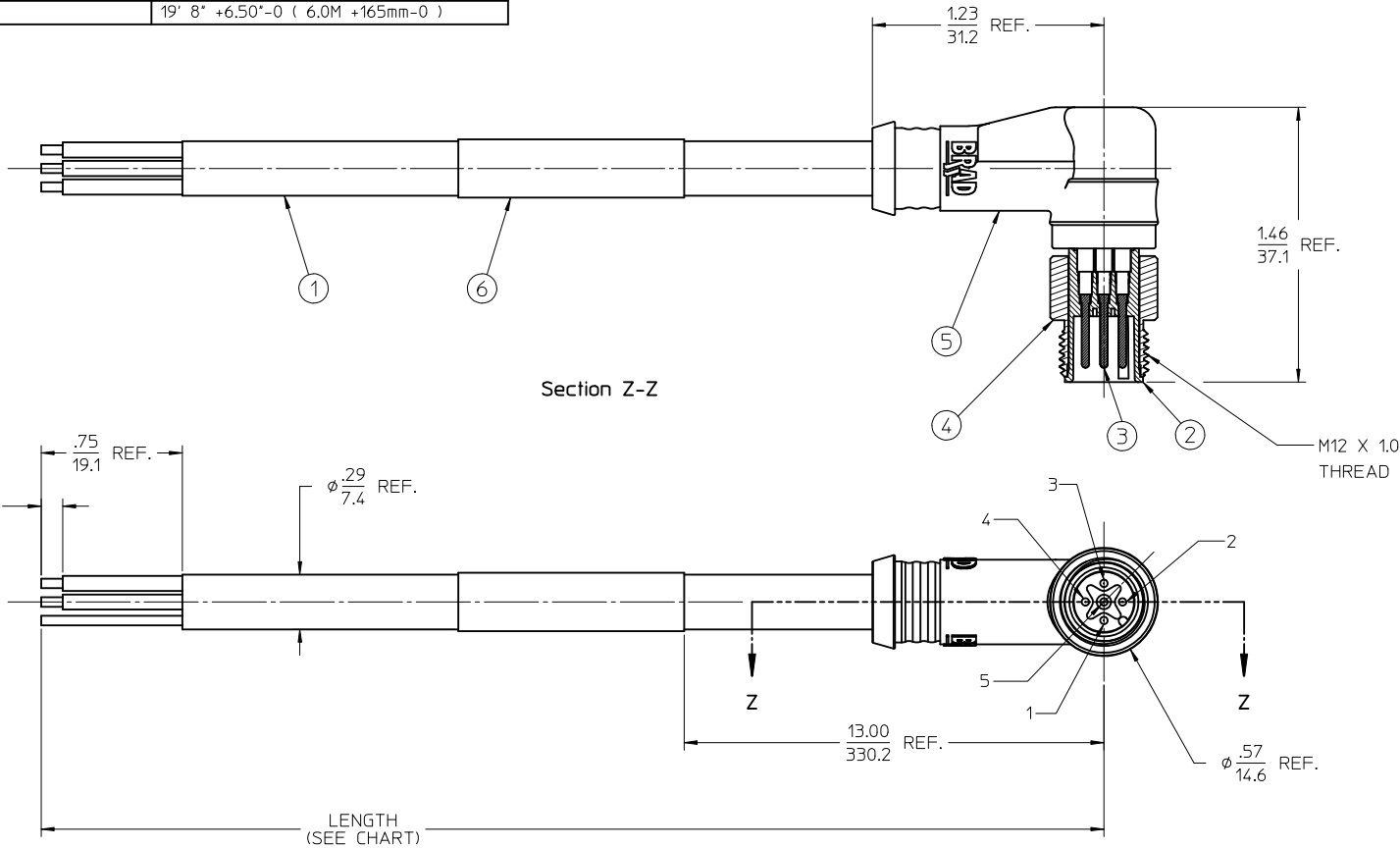
NOTES:

1. MATERIAL: SEE TABLE
2. FINISHES: SEE TABLE
3. PACKAGING: SEALED POLY BAGS WITH BAR-CODE LABEL
4. MATES WITH: MIC 5 POLE DEV-NET RECEPTACLE
5. ELECTRICAL SPECIFICATIONS:  
CURRENT RATING: 4.0 AMPS MAX
6. PART IS RoHS COMPLIANT

| ITEM | QTY. | DESCRIPTION                          | MATERIAL     | FINISH        |
|------|------|--------------------------------------|--------------|---------------|
| 6    | 1    | LABEL                                | PLASTIC FILM | YELLOW/BLACK  |
| 5    | 1    | OVERMOLD                             | PVC          | GRAY          |
| 4    | 1    | COUPLING NUT, EXT. THREAD            | BRASS        | NICKEL PLATED |
| 3    | 5    | CONTACT PIN                          | Cu ALLOY     | GOLD PLATED   |
| 2    | 1    | INSERT, 5 POLE                       | NYLON        | BLACK         |
| 1    | 1    | CABLE, 2 PR. SHIELDED, DEV-NET, THIN | PVC JACKET   | GRAY          |

| <b>RELEASED</b><br>EC NO: MNA2010-0402<br>DRINKERSTONE 2010/01/05<br>CHKD:B. WOODMAN 2010/01/07<br>APPR:J.MURPHY 2010/01/07 | QUALITY SYMBOLS<br>▽=0<br>▽=0 | GENERAL TOLERANCES (UNLESS SPECIFIED)   |       | DIMENSION STYLE<br><b>IN/MM</b>          |    | SCALE<br><b>2:1</b>                 | DESIGN UNITS<br><b>INCH</b> | THIRD ANGLE PROJECTION     |       |       |          |       |        |          |        |       |         |       |   |                                      |  |  |  |
|---|-------------------------------|---|-------|--|----|-------------------------------------|-----------------------------|----------------------------|-------|-------|----------|-------|--------|----------|--------|-------|---------|-------|---|--------------------------------------|--|--|--|
|   |                               | <table border="1"> <thead> <tr> <th></th> <th>mm</th> <th>INCH</th> </tr> </thead> <tbody> <tr> <td>4 PLACES</td> <td>± ---</td> <td>± ---</td> </tr> <tr> <td>3 PLACES</td> <td>± ---</td> <td>± .005</td> </tr> <tr> <td>2 PLACES</td> <td>± 0.13</td> <td>± .01</td> </tr> <tr> <td>1 PLACE</td> <td>± 0.3</td> <td>±</td> </tr> </tbody> </table> |       |  | mm | INCH                                | 4 PLACES                    |                            | ± --- | ± --- | 3 PLACES | ± --- | ± .005 | 2 PLACES | ± 0.13 | ± .01 | 1 PLACE | ± 0.3 | ± | DRAWN BY DATE<br>R. STONE 2009/12/29 |  | TITLE<br><b>MIC CABLE ASSEMBLY<br/>         MALE, 5 POLE, 90 DEG<br/>         DEV-NET DROP</b> |  |
|   |                               |   | mm    | INCH                                     |    |                                     |                             |                            |       |       |          |       |        |          |        |       |         |       |   |                                      |  |  |  |
|   |                               | 4 PLACES  | ± --- | ± ---                                    |    |                                     |                             |                            |       |       |          |       |        |          |        |       |         |       |   |                                      |  |  |  |
| 3 PLACES  | ± ---                         | ± .005  |       |  |    |                                     |                             |                            |       |       |          |       |        |          |        |       |         |       |   |                                      |  |  |  |
| 2 PLACES  | ± 0.13                        | ± .01   |       |  |    |                                     |                             |                            |       |       |          |       |        |          |        |       |         |       |   |                                      |  |  |  |
| 1 PLACE   | ± 0.3                         | ±   |       |  |    |                                     |                             |                            |       |       |          |       |        |          |        |       |         |       |   |                                      |  |  |  |
| ANGULAR ± 1 °   |                               | CHECKED BY DATE<br>B. WOODMAN 2010/01/04  |       | APPROVED BY DATE<br>J. MURPHY 2010/01/06 |    |                                     |                             |                            |       |       |          |       |        |          |        |       |         |       |   |                                      |  |  |  |
| DRAFT WHERE APPLICABLE<br>MUST REMAIN<br>WITHIN DIMENSIONS  |                               | MATERIAL NO.<br><b>SEE CHART</b>  |       | MOLEX INCORPORATED                       |    | DOCUMENT NO.<br><b>SD-84854-024</b> |                             | SHEET NO.<br><b>1 OF 1</b> |       |       |          |       |        |          |        |       |         |       |   |                                      |  |  |  |

| MATERIAL NO. | ENGINEERING NO. | MADE FROM                         |
|--------------|-----------------|-----------------------------------|
| 848548028    | 84854-8028      | 1' 8" +1.75"-0 ( .5M +45mm-0 )    |
| 848548029    | 84854-8029      | 3' 3" +2.19"-0 ( 1.0M +56mm-0 )   |
| 848548030    | 84854-8030      | 6' 7" +3.50"-0 ( 2.0M +89mm-0 )   |
|              |                 | 9' 10" +3.50"-0 ( 3.0M +89mm-0 )  |
| 848548031    | 84854-8031      | 13' 1" +6.50"-0 ( 4.0M +165mm-0 ) |
|              |                 | 16' 5" +6.50"-0 ( 5.0M +165mm-0 ) |
|              |                 | 19' 8" +6.50"-0 ( 6.0M +165mm-0 ) |



ISO1  
Scale 1:1

NOTES:

1. MATERIAL: SEE TABLE
2. FINISHES: SEE TABLE
3. PACKAGING: SEALED POLY BAGS WITH BAR-CODE LABEL
4. MATES WITH: MIC 5 POLE DEV-NET RECEPTACLE
5. ELECTRICAL SPECIFICATIONS:  
CURRENT RATING: 4.0 AMPS MAX
6. PART IS RoHS COMPLIANT

| ITEM | QTY. | DESCRIPTION                          | MATERIAL     | FINISH        |
|------|------|--------------------------------------|--------------|---------------|
| 6    | 1    | LABEL                                | PLASTIC FILM | YELLOW/BLACK  |
| 5    | 1    | OVERMOLD                             | PVC          | GRAY          |
| 4    | 1    | COUPLING NUT, EXT. THREAD            | BRASS        | NICKEL PLATED |
| 3    | 5    | CONTACT PIN                          | Cu ALLOY     | GOLD PLATED   |
| 2    | 1    | INSERT, 5 POLE                       | NYLON        | BLACK         |
| 1    | 1    | CABLE, 2 PR. SHIELDED, DEV-NET, THIN | PVC JACKET   | GRAY          |

| <b>RELEASED</b><br>EC NO: MNA2010-0402<br>DRINKERSTONE 2010/01/05<br>CHKD:B. WOODMAN 2010/01/07<br>APPR:J.MURPHY 2010/01/07 | QUALITY SYMBOLS<br>▽=0<br>▽=0                        | GENERAL TOLERANCES (UNLESS SPECIFIED)<br><table border="1"> <thead> <tr> <th></th> <th>mm</th> <th>INCH</th> </tr> </thead> <tbody> <tr> <td>4 PLACES</td> <td>± ---</td> <td>± ---</td> </tr> <tr> <td>3 PLACES</td> <td>± ---</td> <td>± .005</td> </tr> <tr> <td>2 PLACES</td> <td>± 0.13</td> <td>± .01</td> </tr> <tr> <td>1 PLACE</td> <td>± 0.3</td> <td>±</td> </tr> </tbody> </table> |  | mm   | INCH | 4 PLACES | ± --- | ± --- | 3 PLACES | ± --- | ± .005 | 2 PLACES | ± 0.13 | ± .01 | 1 PLACE | ± 0.3 | ± | DIMENSION STYLE<br><b>IN/MM</b><br>DRAWN BY DATE<br>R. STONE 2009/12/29<br>CHECKED BY DATE<br>B. WOODMAN 2010/01/04<br>APPROVED BY DATE<br>J. MURPHY 2010/01/06 | SCALE<br><b>2:1</b><br>DESIGN UNITS<br><b>INCH</b><br>THIRD ANGLE PROJECTION | TITLE<br><b>MIC CABLE ASSEMBLY<br/>         MALE, 5 POLE, 90 DEG<br/>         DEV-NET DROP</b> |
|---|--|--|--|------|------|----------|-------|-------|----------|-------|--------|----------|--------|-------|---------|-------|---|---|--|--|
|   |  |  | mm   | INCH |      |          |       |       |          |       |        |          |        |       |         |       |   |   |  |  |
| 4 PLACES  | ± ---  | ± ---  |  |      |      |          |       |       |          |       |        |          |        |       |         |       |   |   |  |  |
| 3 PLACES  | ± ---  | ± .005   |  |      |      |          |       |       |          |       |        |          |        |       |         |       |   |   |  |  |
| 2 PLACES  | ± 0.13   | ± .01  |  |      |      |          |       |       |          |       |        |          |        |       |         |       |   |   |  |  |
| 1 PLACE   | ± 0.3  | ±  |  |      |      |          |       |       |          |       |        |          |        |       |         |       |   |   |  |  |
| DRAFT WHERE APPLICABLE<br>MUST REMAIN<br>WITHIN DIMENSIONS  | MATERIAL NO.<br><b>SEE CHART</b><br>SIZE<br><b>C</b> | MOLEX INCORPORATED<br>DOCUMENT NO.<br><b>SD-84854-024</b><br>SHEET NO.<br><b>1 OF 1</b>  | THIS DRAWING CONTAINS INFORMATION THAT IS PROPRIETARY TO MOLEX<br>INCORPORATED AND SHOULD NOT BE USED WITHOUT WRITTEN PERMISSION |      |      |          |       |       |          |       |        |          |        |       |         |       |   |   |  |  |