

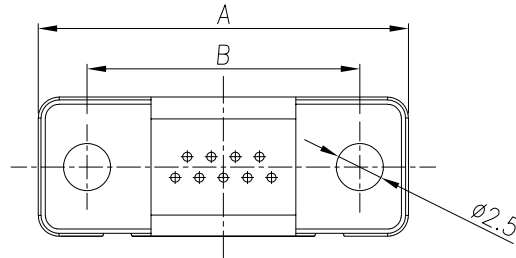
SPECIFICATIONS:

ELECTRICAL:

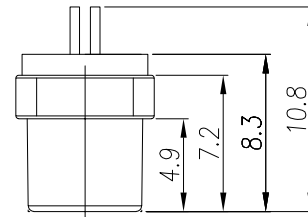
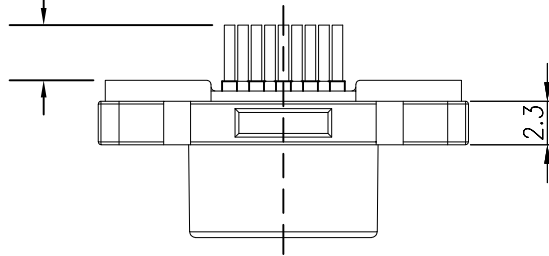
INSULATOR RESISTANCE: 1000 MOHMS MIN.
 SIGNAL CONTACT RESISTANCE: 45 mOHMS MAX.
 CONTACT CURRENT RATING: 1 AMP
 D.W.V.: 500VAC
 OPERATING TEMPERATURE: -55°C TO 85°C

MATERIALS:

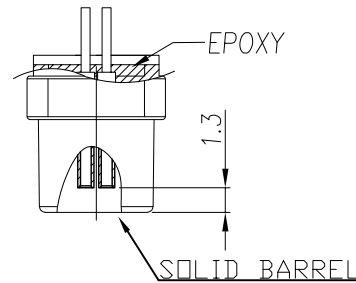
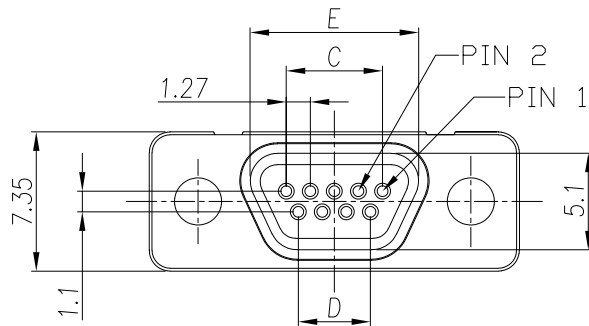
INSULATOR: PBT UL94V-0, BLK
 230°C MAX PROCESS TEMP
 SHELL: ZINC ALLOY
 CONTACTS: 15u" GOLD PLATED BRASS



PCB CONTACT LENGTH
 SEE PART NUMBER KEY
 ±0.20mm



DIMENSIONS(mm) ±0.15					
SIZE	A	B	C	D	E
9	19.55	14.35	5.08	3.81	8.90
15	23.36	18.20	8.89	7.62	12.60
25	29.70	24.55	15.24	13.97	19.20



NOTE:

****NOT DESIGNED TO MATE WITH NORCOMP 580-M // 581-M SERIES CONNECTORS. IF ANY QUESTIONS PLEASE CONTACT ENG@NORCOMP.NET**

380-YYY-21YL001

SERIES

POSITIONS

009

015

025

PCB CONTACT LENGTH

3 = 2.50mm

A = 4.44mm

RoHS COMPLIANT

UNITS = mm

DO NOT SCALE FROM DRAWING



THESE DRAWINGS AND SPECIFICATIONS ARE THE PROPERTY OF NorComp AND SHALL NOT BE REPRODUCED, COPIED OR USED AS THE BASIS FOR THE MANUFACTURE OR SALE OF APPARATUS WITHOUT WRITTEN PERMISSION.

DRAWN:
M. SIGMON

DATE:
08/19/2011

NorComp

SCALE:
NTS

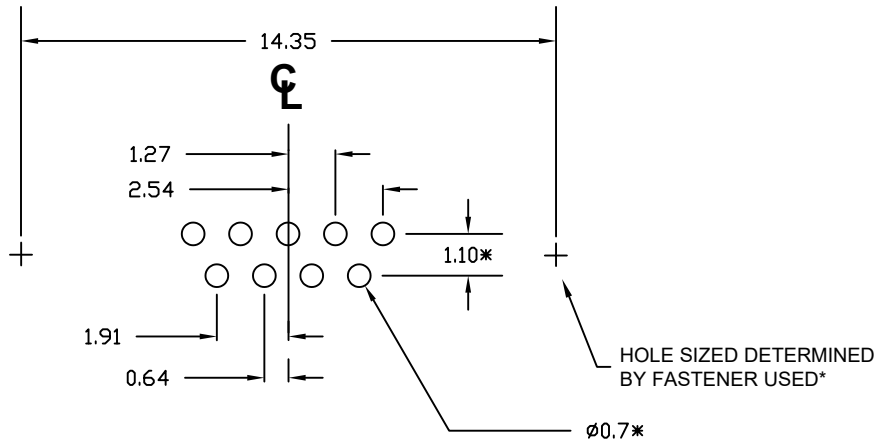
SHEET 1 OF 2

REV 10

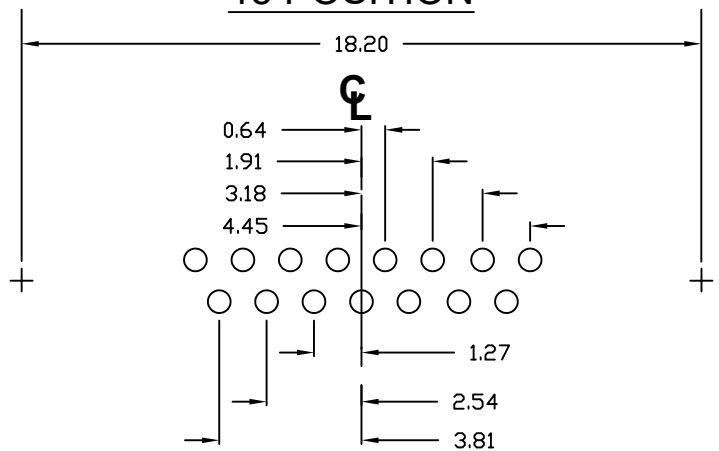
DWG NO.

380-YYY-213L001

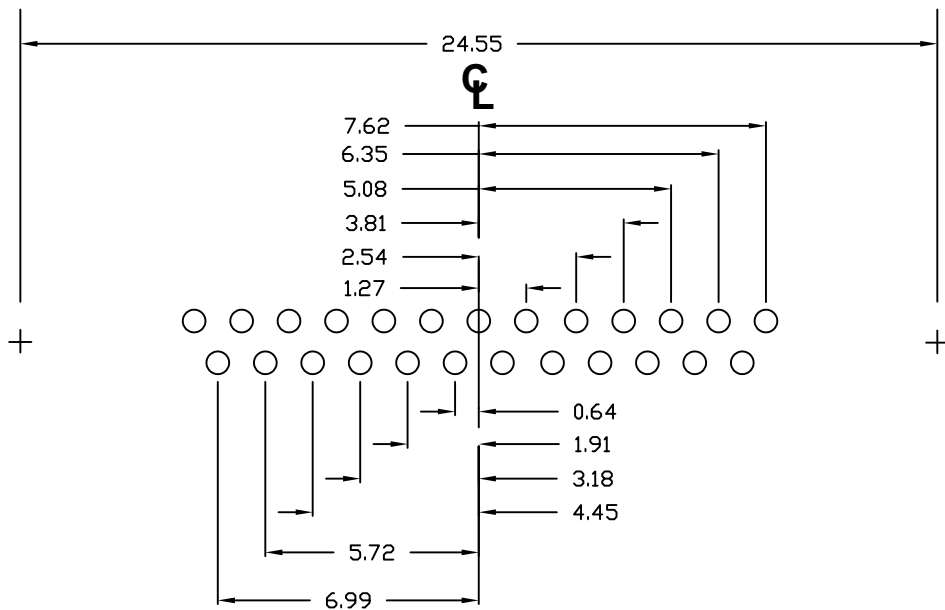
9 POSITION



15 POSITION



25 POSITION



*TYPICAL

HOLE SIZED DETERMINED BY FASTENER USED*

RoHS COMPLIANT

UNITS = mm

DO NOT SCALE FROM DRAWING



THESE DRAWINGS AND SPECIFICATIONS ARE THE PROPERTY OF NorComp AND SHALL NOT BE REPRODUCED, COPIED OR USED AS THE BASIS FOR THE MANUFACTURE OR SALE OF APPARATUS WITHOUT WRITTEN PERMISSION.

DRAWN:
M. SIGMON

DATE:
08/19/2011

NorComp

SCALE:
NTS

SHEET OF
2 2

REV
10

DWG NO.

380-YYY-213L001