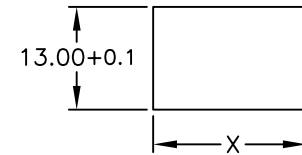
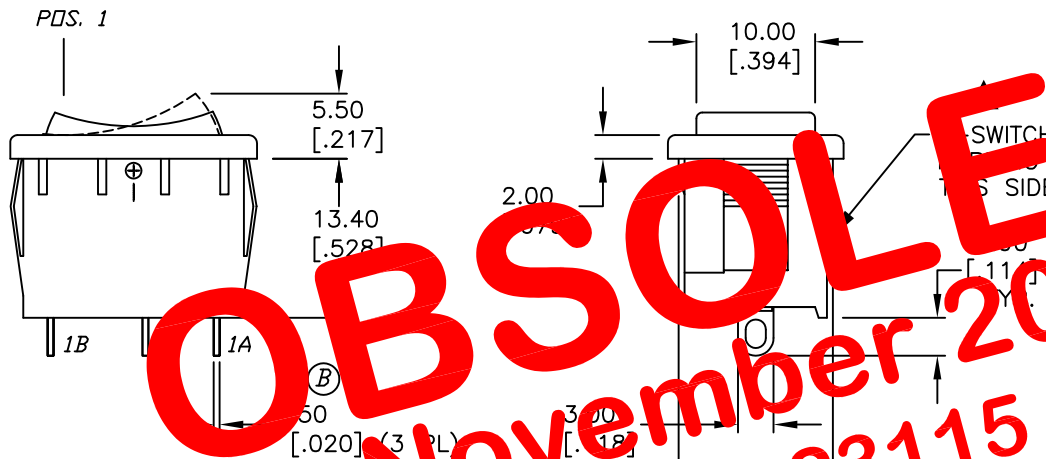


PANEL THICKNESS	X dimension
0.75-1.25 [0.030-.049]	19.2-0.1 [0.756]
1.25-2.0 [0.049-.079]	19.4-0.1 [0.764]
2.0-3.0 [0.079-.118]	19.8-0.1 [0.780]

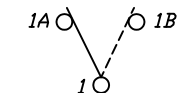


PANEL CUTOUT  
NOT TO SCALE



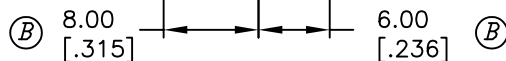
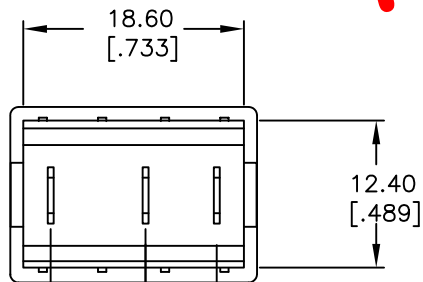
SWITCH FUNCTION		
POS. 1	POS. 2	POS. 3
ON	OFF	(ON)
1-1a	OPEN	1-1b

( )=MOMENTARY



CIRCUIT: SPDT

OBSOLETE  
 November 2017  
 PCR 23115



NOTES:

1. ALL DIMENSIONS IN MM [INCH]
2. GENERAL TOLERANCE: X.X=±0.4  
X.XX=±0.25
3. TERMINAL NUMBERS FOR REF ONLY
4. RATING: 15A @ 125VAC OR 8A @ 250VAC
- APPROVALS: UL, CSA, NEMKO, SEMKO, FEMKO, DEMKO
5. MATERIALS: TERMINALS: Silver Plated Copper Alloy  
CONTACTS: Coin Silver, Silver Plated
6. ELECTRIC LIFE: 10,000 cycles
7. CONTACT RESISTANCE: <20 mILLI-Ohms
8. INSULATION RESISTANCE: >1000 Mega-OHM
9. DIELECTRIC STRENGTH: >1500 VAC 1 minute

**E-SWITCH®**

TITLE		R1966H BLK BLK HS			
SCALE	DATE	DR	DWG	REV	
1.5:1	5/3/02	CB	M301237	B	

REV.	ECN No.	DESCRIPTION	DATE	CHKD
B	12297	REVISED DIMENSION/NOTES	7/9/02	CJB
A	12118	RELEASED FOR PRODUCTION	5/3/02	CJB

THE INFORMATION CONTAINED IN THIS DOCUMENT IS PROPRIETARY TO E-SWITCH AND IS NOT TO BE COPIED OR TRANSFERRED