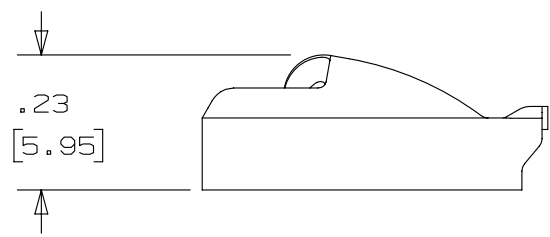
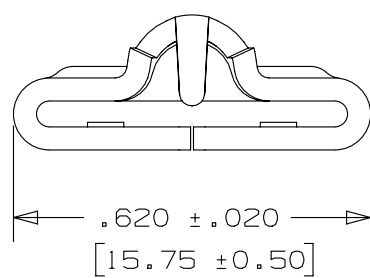
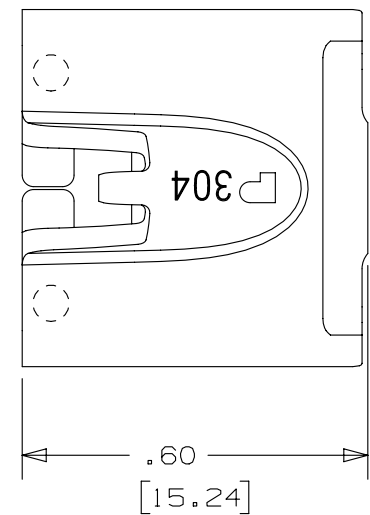


THIS COPY IS PROVIDED ON A RESTRICTED BASIS AND IS NOT TO BE USED IN ANY WAY DETRIMENTAL TO THE INTERESTS OF PANDUIT CORP.

NOTES:

- 1. TO BE USED WITH PANDUIT METAL BANDING MBEH-TLR
- 2. INSTALLATION TOOLS: RT2HT, ST2MT, PBTMT, RT2HTN
- 3. BRACKETS [] DENOTES DIMENSIONS IN MILLIMETERS
- 4. MINIMUM LOOP TENSILE STRENGTH: 300 LBS (1335 newtons)
- 5. TOLERANCES:
 - .X = ±.030 [.762]
 - .XX = ±.020 [.508]
 - .XXX = ±.010 [.254]
 - ANGLES = ±2°
- 6. MATERIAL: 304 STAINLESS STEEL



REV	DATE	BY	CHK	APR	DESCRIPTION	ECN
02A	4/13	JAMB	MIM	RGRO	UPDATE DRAWING TO NEW GLOBAL PANDUIT TITLE BLOCK WITH PANDUIT LOGO	SSECN01049
01A	7/11	JAMB	MIM	---	REMOVED INSTALLATION TOOLS ST3MT. ADDED INSTALLATION TOOL ST2MT, PBTMT & RT2HTN	-----
00A	10/08	JAMB	SKB	---	ORIG CAD FILE SPEC WAS S41211-00. NOTE 2: APPLICATION TOOL RT1HT REPLACED BY RT2HT	-----
00	9/05	JAMB	EJD	---	DRAWING RELEASED	SS00053

TITLE		METAL LOCKING TIE HEAD - EXTRA HEAVY DUTY FOR UNCOATED BANDING PART NO. MTHEH-C	
ITEM REVISION NAME		CUSTOMER DRAWING	
DATASET FILE NAME		N41211BS_DC/02A	
UNLESS OTHERWISE SPECIFIED, DIMENSIONAL TOLERANCES ARE: IN [mm]		MATERIAL:	
.x ± .1 [2.54] .xx ± .01 [.25]		SEE NOTES	
.xxx ± .005 [.127] ANGLES ± 5 °		DRAWING NUMBER:	
THIRD ANGLE PROJECTION		N41211BS_DC	
DRAWN BY	DATE	CHK	SCALE
JAMB	9/16/05	EJD	3:1
SHT 1 OF 1			SIZE
			A