

| PART NUMBER | REVISION | DESCRIPTION | FEED TYPE |
|-------------|----------|----------------------------------|------------|
| 2150421-1 | B | FINE CRIMP HEIGHT ADJUST | MECHANICAL |
| 2150421-2 | B | FINE CRIMP HEIGHT ADJUST | PNEUMATIC |
| 7-2150421-1 | B | MECHANICAL AND CRIMP TOOLING KIT | MECHANICAL |
| 7-2150421-2 | B | PNEUMATIC AND CRIMP TOOLING KIT | PNEUMATIC |
| 7-2150421-7 | A | CRIMP TOOLING KIT | - |

ATLANTIC VERSION TERMINATOR INTERFACE ADAPTER



| APPLICATOR DATA | | |
|-----------------|----------------|------|
| CRIMP | SIZE | TYPE |
| WIRE | 2.03 mm [.080] | F |
| INSUL | 4.57 mm [.180] | F |

APPLICATOR INSTRUCTIONS 408-35043

| TERMINAL DATA: TE TERMINAL | | TE CRIMP SPECIFICATION | |
|---|------------------------|------------------------------|-------------|
| TERMINAL NAME: RECEPTACLE, FASTIN-FASTON, .187 SERIES | | | |
| WIRE STRIP LENGTH | | INSULATION DIAMETER RANGE | |
| 6.10-5.33 mm [.240-.210 IN] | | ∅3.30-2.29 mm [.130-.090 IN] | |
| TERMINAL APPLICATION SPECIFICATION | (A)114-2023 | | |
| TERMINALS APPLIED | | | |
| TE TERMINAL (A) 60435-1 | TE TERMINAL (A) 152368 | TE TERMINAL (A) 152368-1 | TE TERMINAL |

| WIRE SIZE | CRIMP HEIGHT mm [INCH] | CRIMP HEIGHT REFERENCE SETTING |
|-----------|-------------------------------|--------------------------------|
| 16 AWG | 1.52 +/- 0.05 [.060 +/- .002] | 3.9 |
| 18 AWG | 1.32 +/- 0.05 [.052 +/- .002] | 6.1 |
| 20 AWG | 1.19 +/- 0.05 [.047 +/- .002] | 7.7 |
| 22 AWG | 1.14 +/- 0.05 [.045 +/- .002] | 7.9 |

- 1 RECOMMENDED SPARE PARTS
- 2 REFER TO SUPPLIED INSTRUCTION SHEET FOR CLEANING, LUBRICATION AND STORAGE OF APPLICATOR.
- 3 APPLY PART NUMBER 1-23419-5 LOCTITE TO THREADS OF ITEM 242. APPLY PART NUMBER 2-23419-6 LOCTITE TO THREADS OF ITEM 50.
- 4 CRIMP HEIGHT REFERENCE SETTING WAS THE SETTING USED WHEN THE APPLICATOR WAS QUALIFIED AT THE FACTORY. ADJUSTMENT MAY BE NECESSARY WHEN RUNNING APPLICATOR IN THE FIELD.
- 5 22AWG WIRE TO BE USED FOR TERMINAL 60435-1 ONLY.
- 6. UNLESS SPECIFIED OTHERWISE TORQUE VALUES SHALL BE USED PER DOCUMENT, 101-35000.

***WARNING**
ON INSTALLATION, SET WIRE DISC TO CRIMP HEIGHT REFERENCE SETTING FOR LARGEST WIRE SIZE. CRIMP HEIGHT REFERENCE SETTINGS GREATER THAN THE VALUE SHOWN MAY CAUSE DAMAGE TO THE CRIMP TOOLING. REFER TO THE INSTRUCTION SHEET FOR PROPER SETUP AND ADJUSTMENTS.

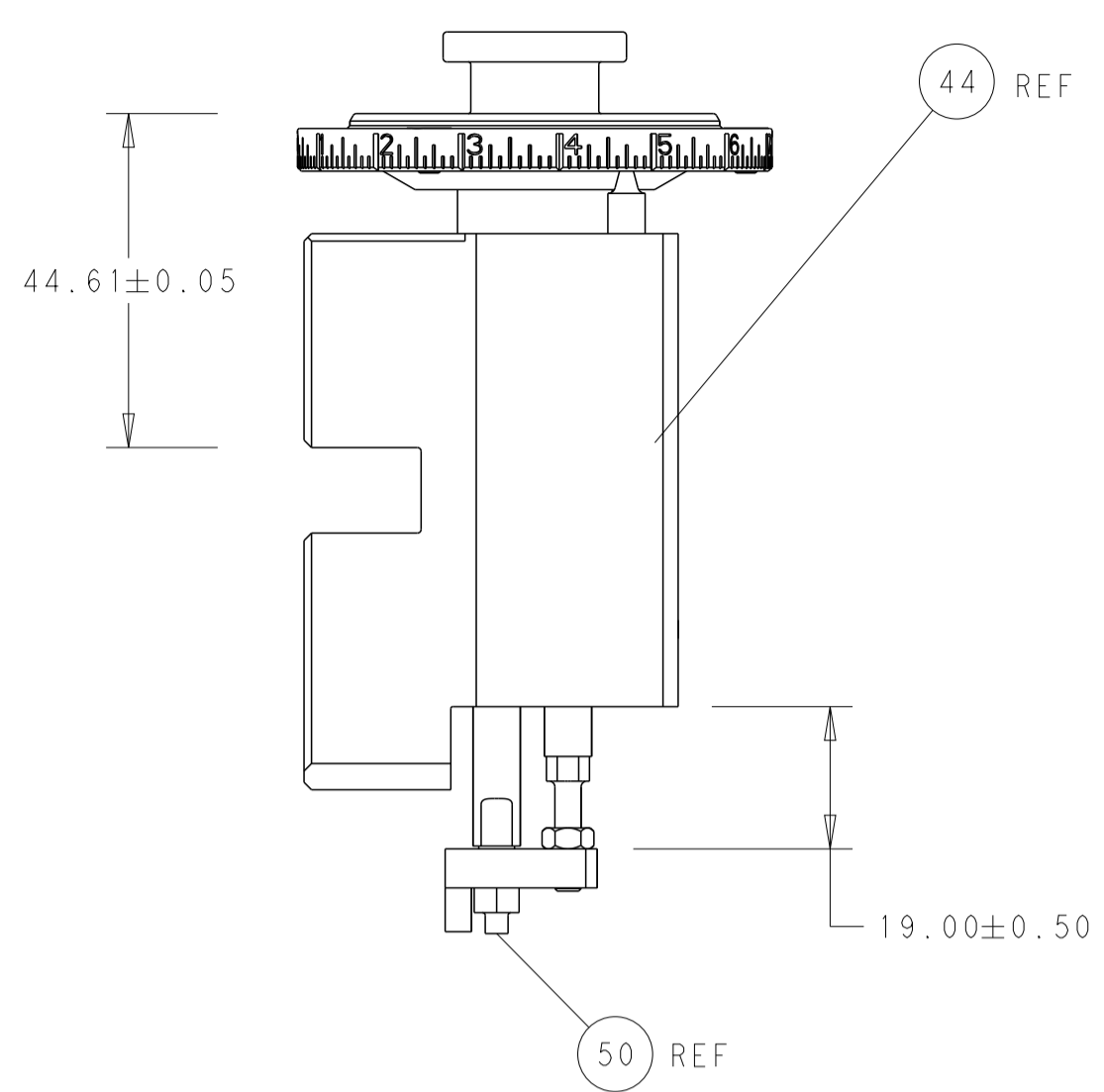
ATLANTIC VERSION
Shown on sheets 1 of 4 & 2 of 4
(Pacific version shown on sheets 3 of 4 & 4 of 4)

| LOC | DIST | REVISIONS | | | | | |
|-----|------|-----------|-----|---------------|-----------|-----|------|
| | | P | LTN | DESCRIPTION | DATE | OWN | APVD |
| A | 66 | A | | RELEASED | 25MAR2014 | RW | GB |
| | | B | | ECR-22-129511 | 14FEB2022 | JWC | TE |
| | | B1 | | ECR-22-162257 | 28DEC2022 | JWC | TE |

| | | | | | | | | |
|---|-----|-----|-----|-----|-------------|-------------------------------------|-------------------------------|---------|
| - | 1 | - | 1 | - | 2119641-1 | FEED CAM, AIR FEED | 248 | |
| - | 1 | 1 | 1 | 1 | 2119082-9 | CAM, SNAIL, INSULATION ADJUSTMENT | 244 | |
| - | 1 | 1 | 1 | 1 | 2079764-1 | WASHER, WAVE SPRING, CREST-TO-CREST | 243 | |
| 3 | - | 1 | 1 | 1 | 2119083-1 | RETAINER, INSULATION DIAL | 242 | |
| - | - | 1 | - | 1 | 2119580-1 | MECHANICAL FEED ASSEMBLY | 239 | |
| - | 1 | - | 1 | - | 2844940-3 | AIR FEED MODULE | 238 | |
| - | 1 | 1 | 1 | 1 | 1-18028-0 | WASHER, FLAT, REG M8 | 192 | |
| - | 1 | 1 | 1 | 1 | 6-993111-6 | PIN, SLOTTED SPRING 3.0 X 14.0 | 177 | |
| - | 1 | 1 | 1 | 1 | 8-22280-7 | SPRING, COMPRESSION | 176 | |
| - | 1 | 1 | 1 | 1 | 1752353-2 | GUIDE PIN,HOLDDOWN | 175 | |
| - | 1 | 1 | 1 | 1 | 1901680-2 | GUIDE PIN,HOLDDOWN | 174 | |
| - | REF | REF | REF | REF | 994970-2 | COUNTER, MAGNETIC | 164 | |
| - | 1 | 1 | 1 | 1 | 455888-5 | SPACER, CRIMPER | 82 | |
| - | 1 | 1 | 1 | 1 | 1803607-4 | DOCUMENTATION PACKAGE | 71 | |
| - | 2 | 2 | 2 | 2 | 2-18032-2 | SCR, SET, FLT PNT, M3 X 10.0 | 70 | |
| - | 1 | 1 | 1 | 1 | 2119740-1 | TAG, IDENTIFICATION | 67 | |
| - | 2 | 2 | 2 | 2 | 2168078-1 | SCREW, DRIVE, RH, RoHS, 2 x .188 | 66 | |
| - | 1 | 1 | 1 | 1 | 1901681-5 | HOLDDOWN, TERMINAL | 65 | |
| - | 2 | 2 | 2 | 2 | 2168400-5 | SHCS, LOW HEAD, RoHS, M4 X 20 | 64 | |
| - | 1 | 1 | 1 | 1 | 2168083-2 | SCR, SKT HD CAP, RoHS, M4 X 8.0 | 60 | |
| - | 1 | 1 | 1 | 1 | 5-18022-5 | SCR, HEX HD CAP, M4 X 6.0 | 59 | |
| - | - | 1 | - | 1 | 2063961-1 | FEED FINGER | 58 | |
| - | 3 | 3 | 3 | 3 | 2168400-4 | SHCS, LOW HEAD, RoHS, M4 X 8 | 57 | |
| - | 2 | 2 | 2 | 2 | 1-2168083-0 | SCR, SKT HD CAP, RoHS, M4 X 10 | 56 | |
| - | 2 | 2 | 2 | 2 | 5018030-1 | NUT, HEX, REG, RoHS, M3 | 54 | |
| - | 2 | 2 | 2 | 2 | 986965-8 | NUT, LOCK, HEX, TORQUE (M4) | 53 | |
| - | 1 | 1 | 1 | 1 | 1-5018030-0 | NUT, HEX, REG, RoHS, M3.5 | 52 | |
| - | 1 | - | 1 | - | 2063961-1 | FEED FINGER | 51 | |
| 3 | - | 1 | 1 | 1 | 1976055-9 | STANDOFF, HOLD-DOWN | 50 | |
| - | 1 | 2 | 1 | 2 | 18023-9 | SCR, SKT HD CAP M4 X 6.0 | 49 | |
| - | - | 1 | - | 1 | 2119652-1 | FEED CAM, PRE FEED | 48 | |
| - | - | 1 | - | 1 | 2119653-1 | FEED CAM, POST FEED | 47 | |
| - | 1 | 1 | 1 | 1 | 2119655-5 | APPLICATOR BASIC ASSEMBLY, EF | 46 | |
| - | 1 | 1 | 1 | 1 | 1803517-1 | RAM ASSEMBLY, EF ATLANTIC | 44 | |
| - | 1 | 1 | 1 | 1 | 1803602-1 | SCR, BHSC, RoHS (M8 X 25) | 41 | |
| - | 7 | 7 | 7 | 7 | 1-18028-2 | WASHER, FLAT, REG M4 | 33 | |
| - | 2 | 2 | 2 | 2 | 2168083-9 | SCR, SKT HD CAP, RoHS, M4 X 20 | 31 | |
| - | 2 | 2 | 2 | 2 | 1-2168083-0 | SCR, SKT HD CAP, RoHS, M4 X 10 | 29 | |
| - | 1 | 1 | 1 | 1 | 240639-1 | STRIPPER (MACHINING) | 27 | |
| - | 2 | 2 | 2 | 2 | 1-2168083-5 | SCR, SKT HD CAP, RoHS, M4 X 30 | 25 | |
| - | 1 | 1 | 1 | 1 | 1752371-3 | PLATE, STRIP GUIDE | 24 | |
| - | 1 | 1 | 1 | 1 | 240825-4 | PLATE, STRIP HOLD DOWN | 23 | |
| - | 2 | 2 | 2 | 2 | 2-22281-3 | SPRING, COMPRESSION | 22 | |
| - | 1 | 1 | 1 | 1 | 1803292-4 | DRAG | 20 | |
| - | 2 | 2 | 2 | 2 | 1-1901259-0 | GUIDE, LOWER STRIP | 18 | |
| - | 4 | 4 | 4 | 4 | 1-2079383-1 | SCR, BHSC, RoHS (M6 X 12) | 17 | |
| - | 1 | 1 | 1 | 1 | 4-240641-9 | SPACER | 16 | |
| - | 1 | 1 | 1 | 1 | 1752360-1 | SPACER,HOLD-DOWN | 13 | |
| 1 | - | 1 | 1 | 1 | 240833-2 | PLATE, REAR SHEAR | 11 | |
| - | - | - | - | - | - | - | 10 | |
| 1 | - | 1 | 1 | 1 | 690482-6 | PLATE, FRONT SHEAR | 9 | |
| 1 | 1 | 2 | 2 | 1 | 1 | 4-1803000-5 | ANVIL, COMBINATION, END FEED | 8 |
| 1 | - | 1 | 1 | 1 | 1 | 1-690474-9 | BLADE, SLUG | 7 |
| - | - | - | - | - | - | - | 6 | |
| - | 1 | 1 | 1 | 1 | 240641-3 | SPACER | 5 | |
| - | 1 | 1 | 1 | 1 | 238011-2 | BLOCK, CRIMPER SPACER | 4 | |
| 1 | 1 | 2 | 2 | 1 | 1 | 2119582-3 | CRIMPER, INSULATION F PREMIUM | 3 |
| - | 1 | 1 | 1 | 1 | 455888-9 | SPACER, CRIMPER | 2 | |
| 1 | 1 | 2 | 2 | 1 | 1 | 1-456405-3 | CRIMPER, WIRE PREMIUM | 1 |
| - | 77 | 72 | 71 | 2 | -1 | PART NO | DESCRIPTION | ITEM NO |

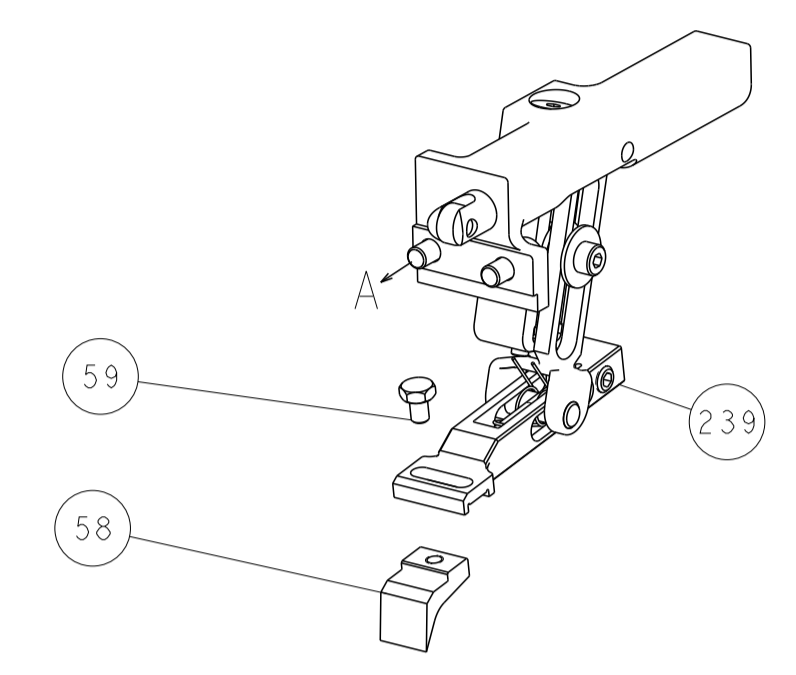
| DIMENSIONS: | | TOLERANCES UNLESS OTHERWISE SPECIFIED: | | DRAWING NO | |
|--|----------|--|---------|--------------------|--------------|
| mm | 0 PLC ± | 1 PLC ± | 2 PLC ± | 3 PLC ± | 4 PLC ± |
| | ANGLES ± | FINISH ± | | | |
| MATERIAL | | FINISH | | WEIGHT | |
| | | | | A1 00779 C=2150421 | |
| Customer Accessible Production Drawing | | | | SCALE | SHEET 1 OF 4 |
| | | | | REV | B1 |

| LOC | DIST | REV | DATE | BY | APPD |
|---------------|------|-----|------|----|------|
| A | 66 | | | | |
| REVISIONS | | | DATE | BY | APPD |
| - SEE SHEET 1 | | | - | - | - |

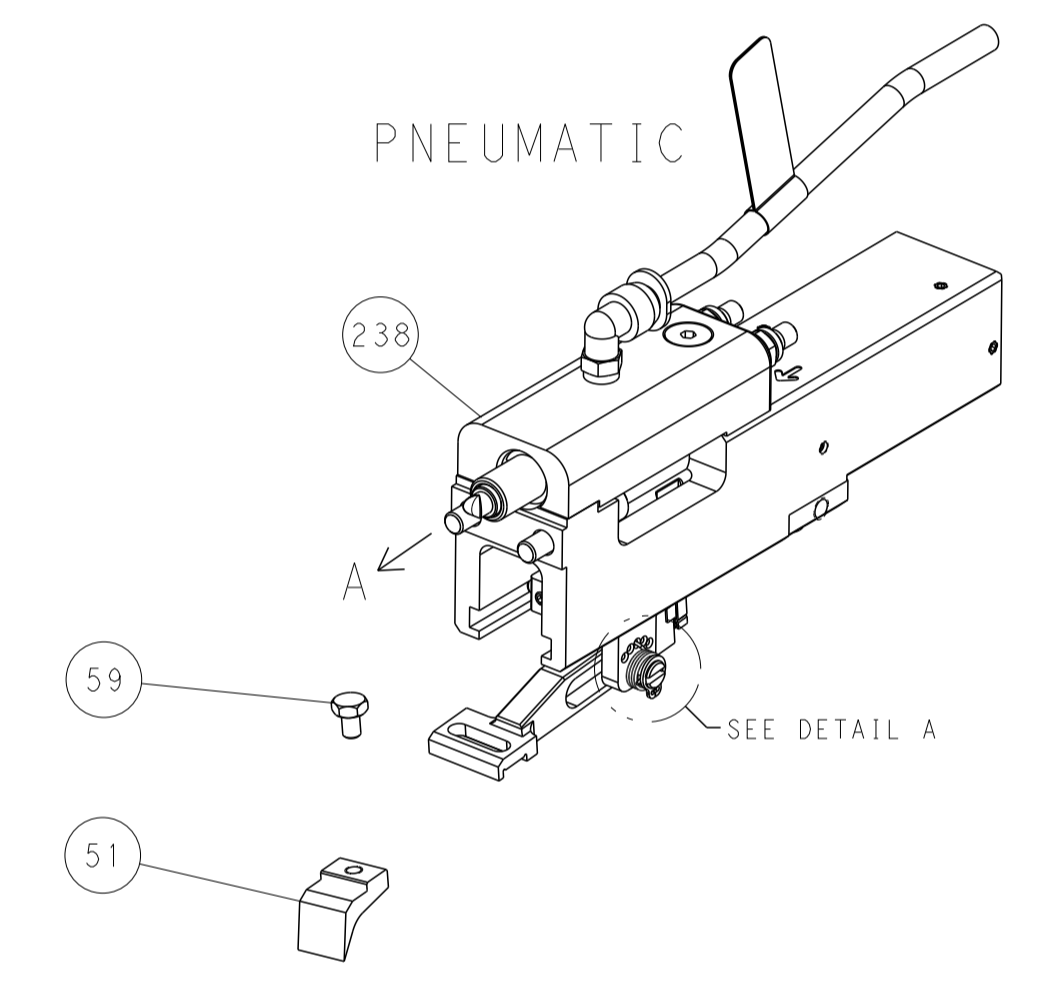


RAM AND HOLDDOWN SET-UP

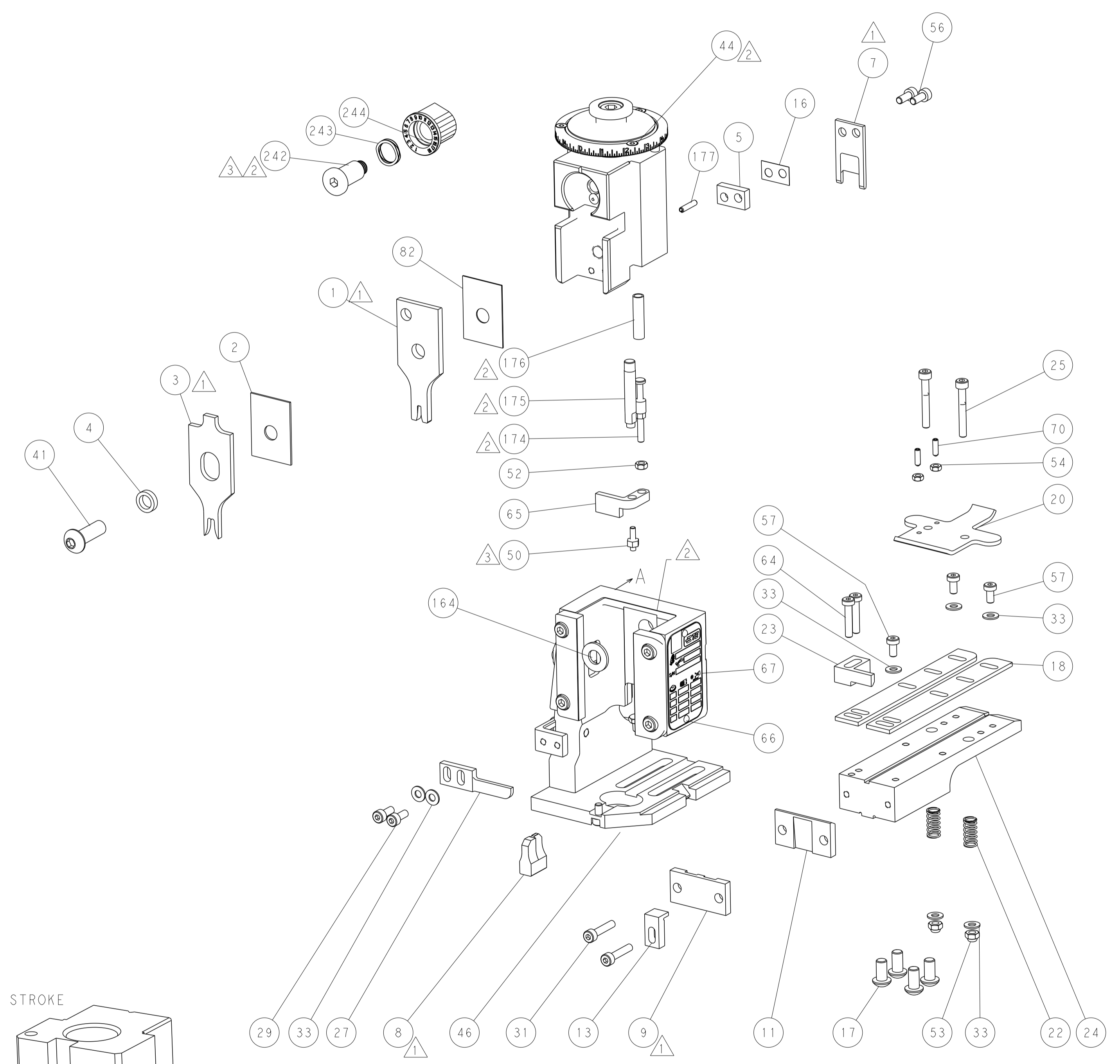
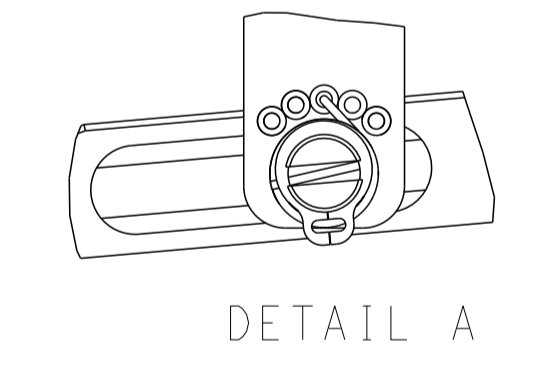
FEED TYPE
MECHANICAL



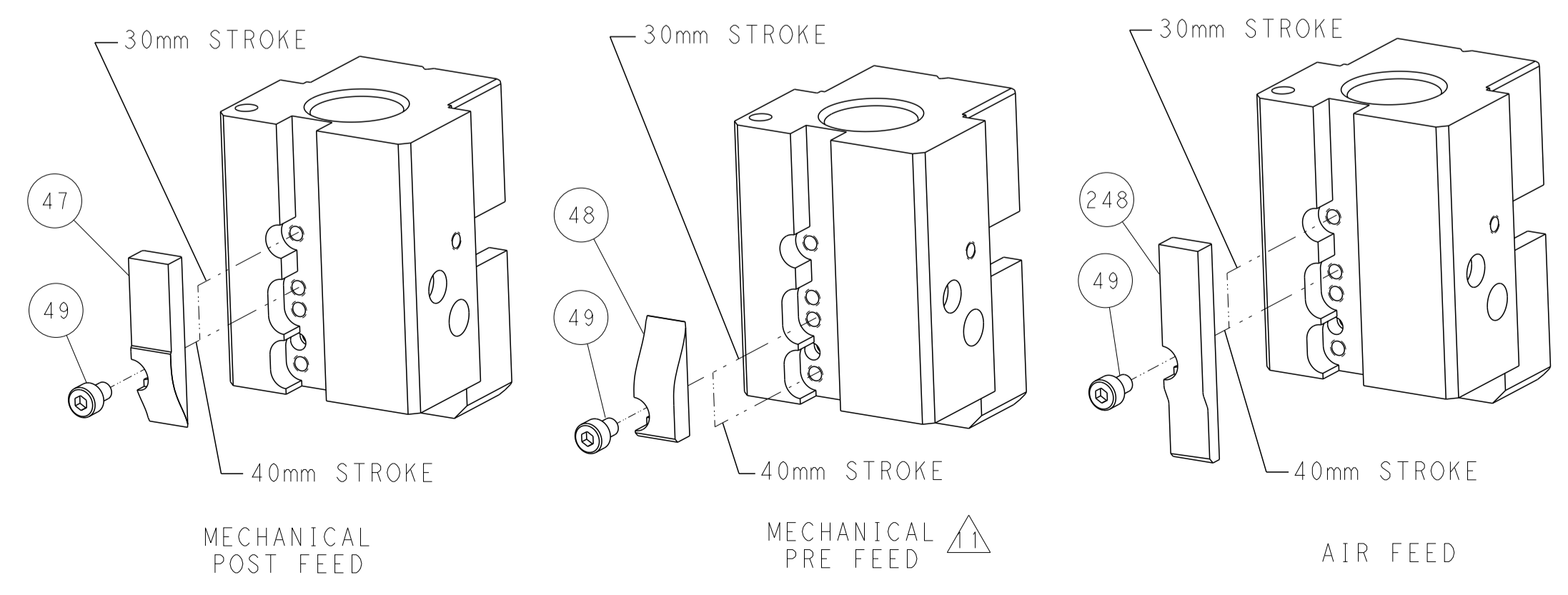
PNEUMATIC



FEED SPRING
SETTING POSITION



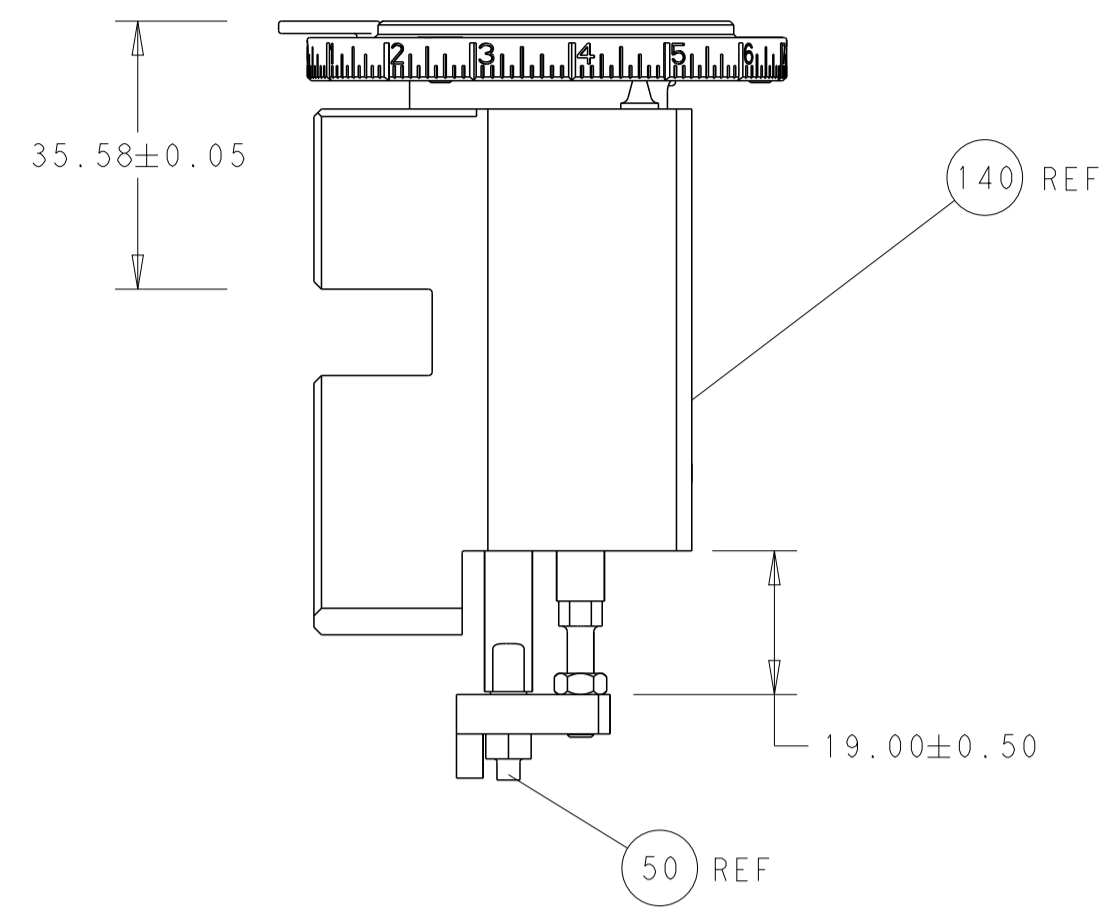
CAM POSITIONS



ATLANTIC VERSION
 Shown on sheets 1 of 4 & 2 of 4
 (Pacific version shown on sheets 3 of 4 & 4 of 4)

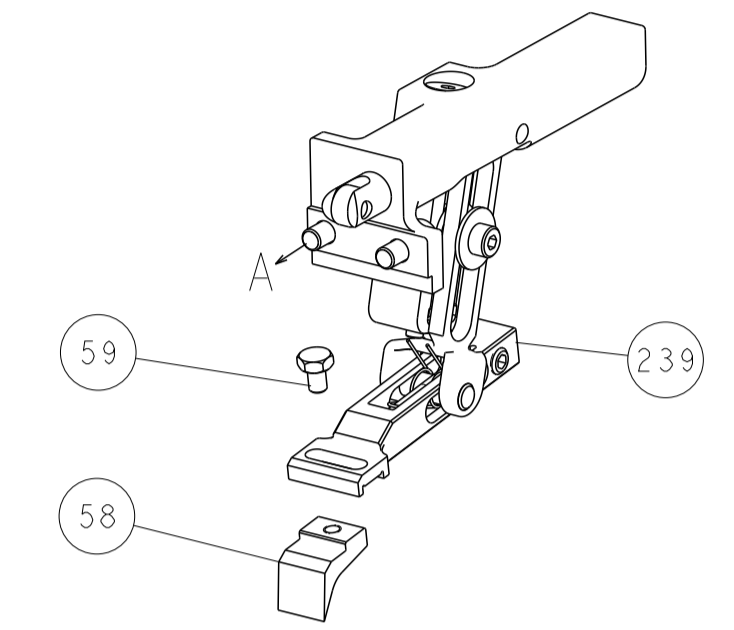
| | | | | | | | |
|-------------|--|--|--|--|--|---------------------------------|--|
| DIMENSIONS: | | TOLERANCES UNLESS OTHERWISE SPECIFIED: | | DWG: R.O. WILSON 20FEB2014 | | TE Connectivity | |
| mm | | 0 PLC ± | | CHK: K.J. STAKEM 21FEB2014 | | Harrisburg, PA 17105-3608 | |
| Ø | | 1 PLC ± | | APPD: T.L. ELBIN 21FEB2014 | | NAME: Ocean End Feed Applicator | |
| H | | 2 PLC ± | | PRODUCT SPEC | | SIZE: A1 | |
| D | | 3 PLC ± | | APPLICATION SPEC | | CAGE CODE: 00779 | |
| R | | 4 PLC ± | | WEIGHT | | DRAWING NO: 2150421 | |
| ANGLES | | FINISH | | MATERIAL | | SCALE: 1:1 | |
| | | | | Customer Accessible Production Drawing | | SHEET 2 OF 4 | |
| | | | | | | REV: B1 | |

| LOC | | DIST | | REVISIONS | | | |
|-----|----|------|-----|-------------|------|-----|------|
| A | 66 | P | LTM | DESCRIPTION | DATE | OWN | APVD |
| | | - | | SEE SHEET 1 | | | |

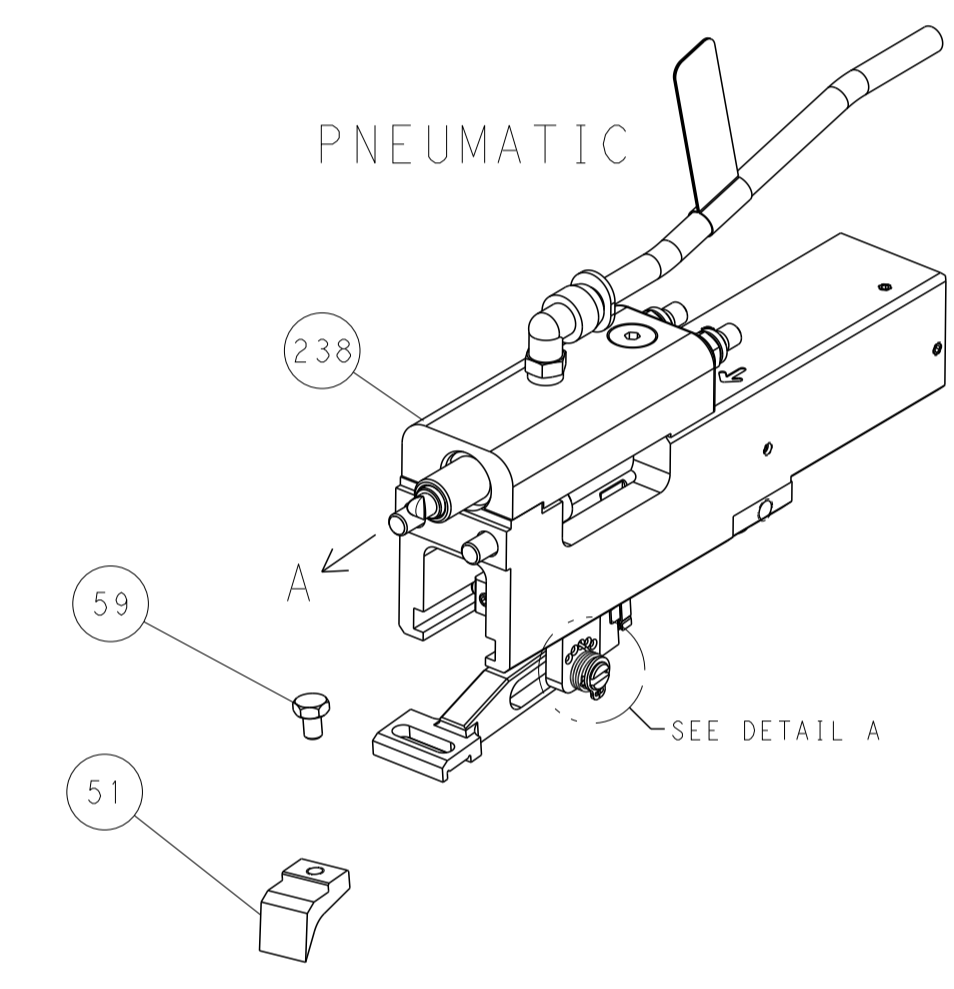


RAM AND HOLDDOWN SET-UP

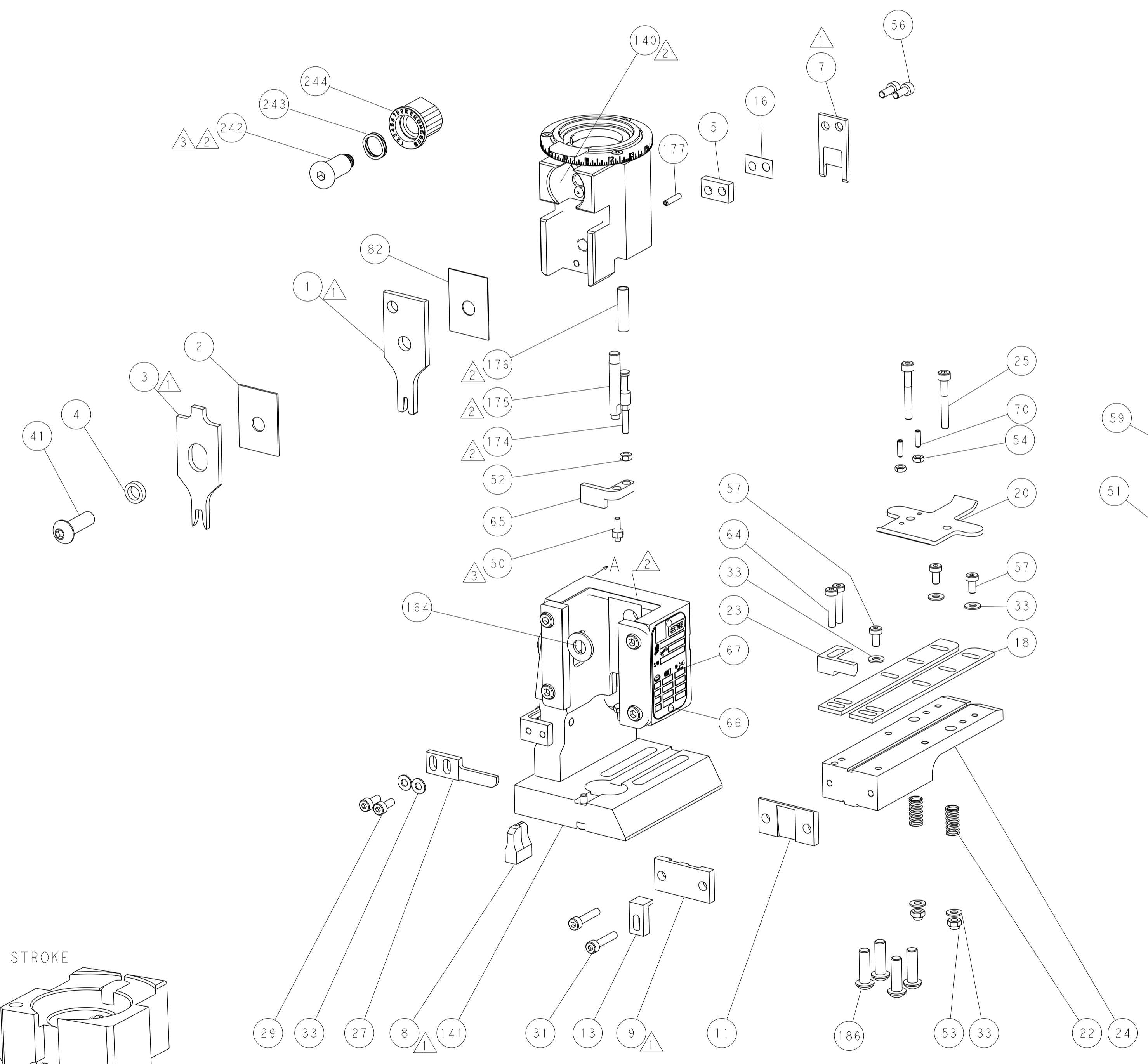
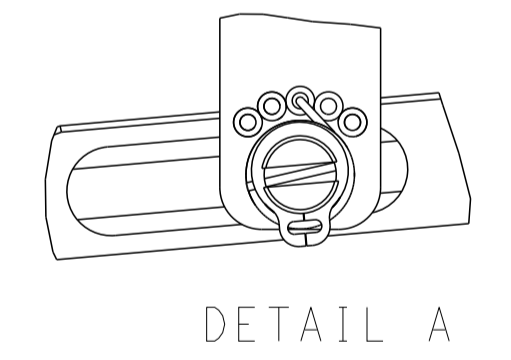
FEED TYPE
MECHANICAL



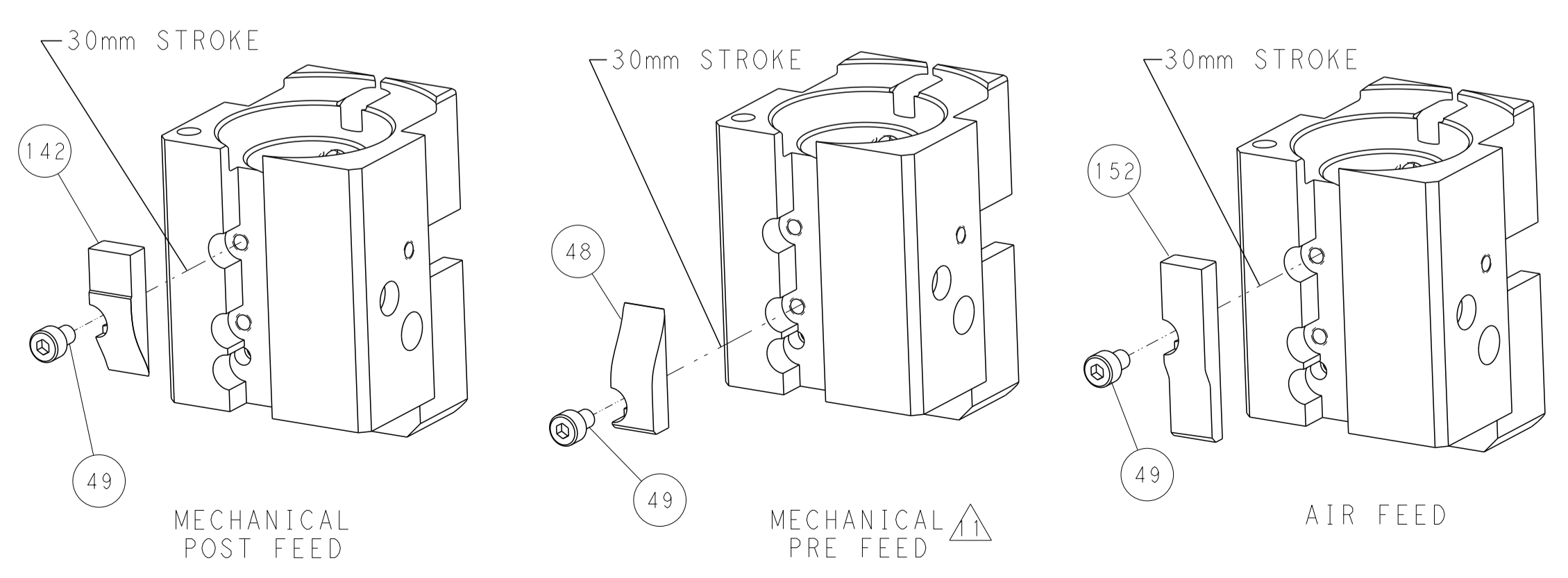
PNEUMATIC



FEED SPRING
SETTING POSITION



CAM POSITIONS



PACIFIC VERSION
 Shown on sheets 3 of 4 & 4 of 4
 (Atlantic version shown on sheets 1 of 4 & 2 of 4)

| | | | | | | | |
|-------------|----------|--|---------|--|------------------|---|----------------|
| DIMENSIONS: | | TOLERANCES UNLESS OTHERWISE SPECIFIED: | | DRAWN: R.O. WILSON 20FEB2014 | | NAME: STE TE Connectivity Harrisburg, PA 17105-3608 | |
| mm | 0 PLC ± | 1 PLC ± | 2 PLC ± | 3 PLC ± | 4 PLC ± | APVD: T.L. ELBIN 21FEB2014 | PRODUCT SPEC |
| | ANGLES ± | FINISH ± | | | | APPLICATION SPEC | |
| MATERIAL: | | WEIGHT: | | SIZE: A1 | CAGE CODE: 00779 | DRAWING NO: C-2150421 | RESTRICTED TO: |
| | | | | Customer Accessible Production Drawing | SCALE: 1:1 | SHEET: 4 OF 4 | REV: B1 |