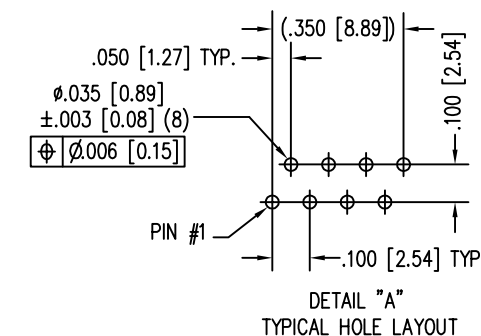
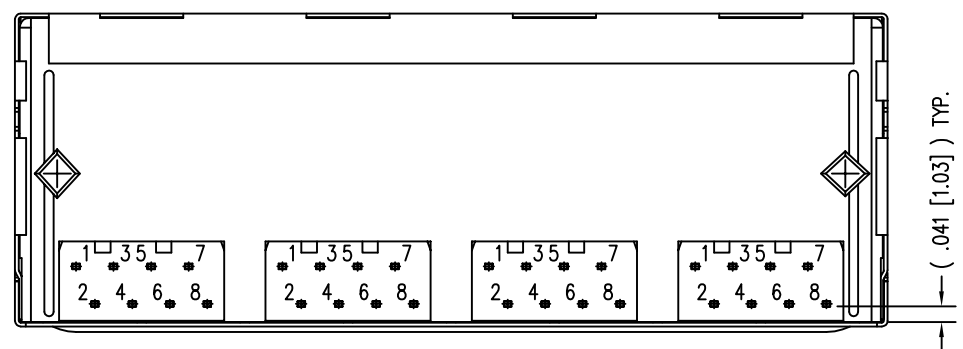
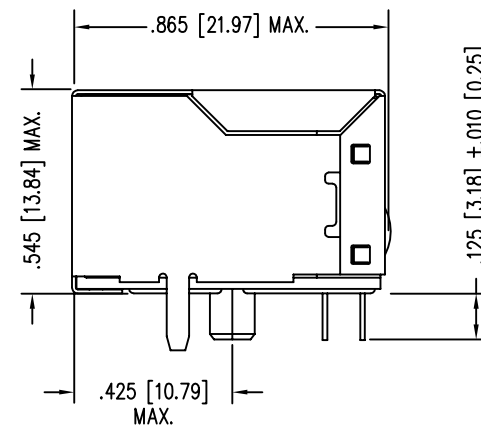
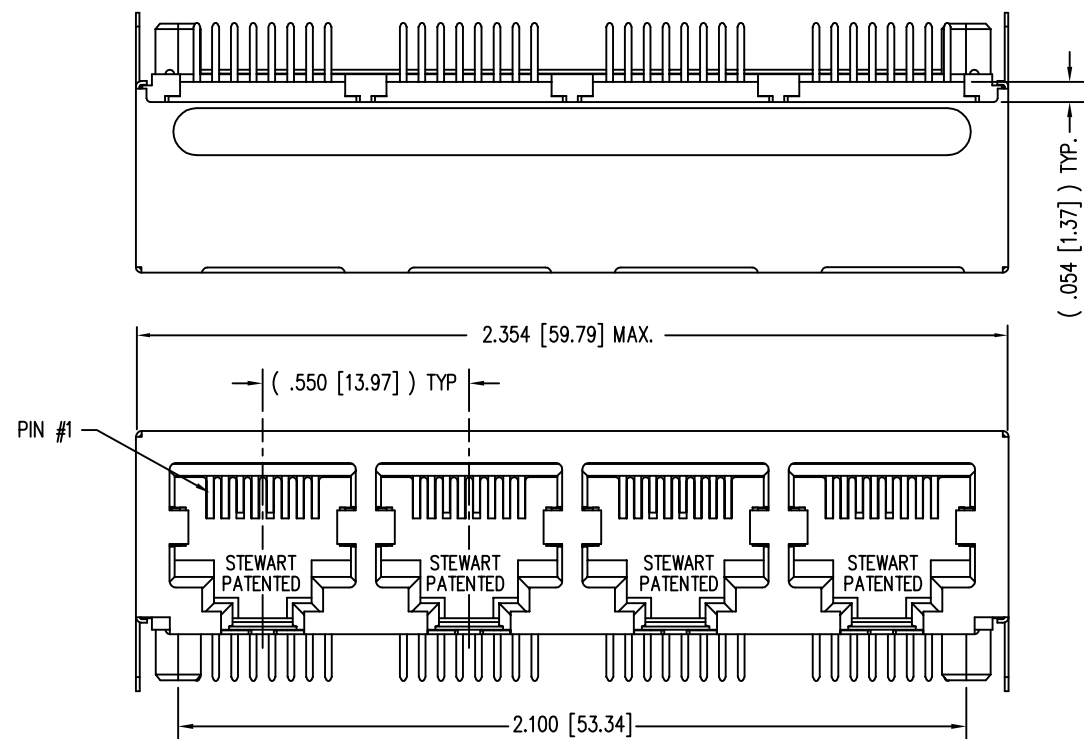


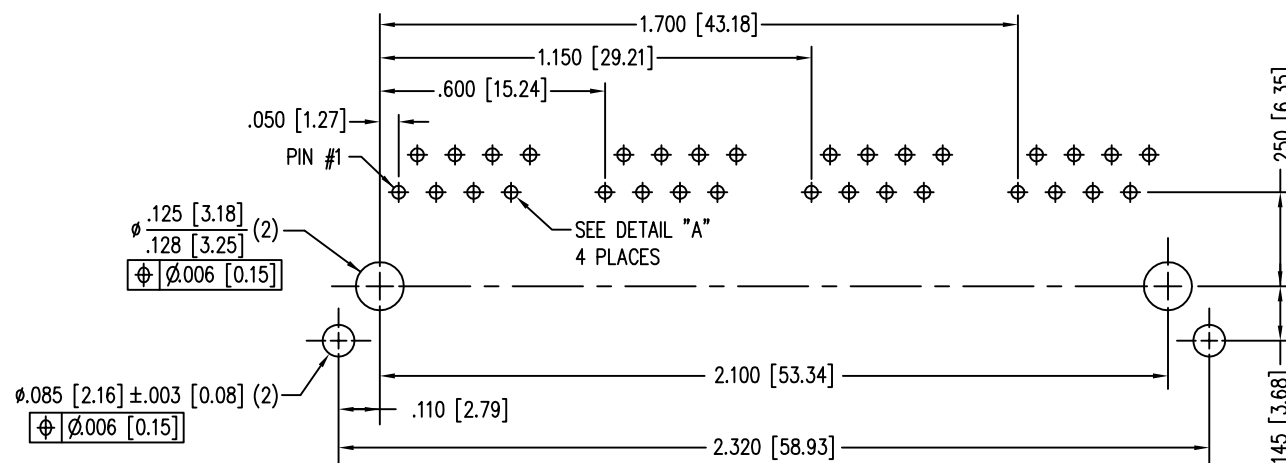
| DATE    | REV | ECN   | APP'D. BY |
|---------|-----|-------|-----------|
| 2-29-16 | A8  | 10572 | TRM       |
| 8-15-16 | A9  | 10742 | TRM       |
|         |     |       |           |
|         |     |       |           |



NOTES:

- CONNECTOR MATERIALS:  
HOUSING: THERMOPLASTIC UL94 V-0  
CONTACTS/SHIELD: COPPER ALLOY  
SHIELD PLATING: NICKEL  
CONTACT PLATING: SELECTIVE GOLD IN CONTACT AREA  
SEE CHART FOR PART NUMBER
- FOR PRODUCT SPECIFICATIONS SEE PR022-01.
- DIMENSIONS AND TOLERANCES COMPLY WITH FCC/CFR 47, PART 68.
- DESIGNED FOR CATEGORY 5/5e APPLICATIONS.

|                                   |                 |
|-----------------------------------|-----------------|
| 30 MICRO-INCHES [0.76um]          | SS-718804S-A-NF |
| CONTACT PLATING<br>IN MATING AREA | PART NUMBER     |



P.C.B. RECOMMENDED HOLE LAYOUT  
SEEN FROM COMPONENT SIDE  
ALL CENTERLINE DIMENSIONS ARE BASIC.



|  |  |
|--|--|
| THIRD ANGLE PROJECTION   |  |
| DO NOT SCALE DRAWING<br>DRAWING IS SUBJECT TO<br>CHANGE WITHOUT NOTICE       |  |
| DIMENSIONS: INCHES [METRIC]  |  |
| UNLESS OTHERWISE SPECIFIED<br>TOLERANCES ARE ±.005 [0.13]<br>ANGLES ARE ± 1° |  |
| SHEET NO. 1 OF 1   |  |

|  |  |   |
|--|--|---|
| <br>1118 Susquehanna Trail South<br>Glen Rock, PA 17327-9199<br>(717) 235-7512<br><a href="http://www.stewartconnector.com">http://www.stewartconnector.com</a>  | <b>stewart</b><br>CONNECTOR<br>a bel group   |   |
|  | TITLE: EMI-RFI ONE PIECE SHIELDED, ESD GROUNDED<br>4 PORT PCB HARMONICA CAT 5/5e JACK PAC, NON-FLANGED |   |
| THIS DRAWING AND THE SUBJECT MATTER SHOWN THEREON<br>ARE CONFIDENTIAL AND THE PROPRIETARY PROPERTY OF<br>STEWART CONNECTOR AND SHALL NOT BE REPRODUCED,<br>COPIED, OR USED IN ANY MANNER WITHOUT PRIOR WRITTEN<br>CONSENT OF STEWART CONNECTOR. ONE OR MORE U.S. PATENTS<br>MAY APPLY TO THIS PRODUCT. FOR DETAILS, PLEASE<br>VISIT: <a href="http://BELFUSE.COM/STEWART/STEWART_PATENTS/">HTTP://BELFUSE.COM/STEWART/STEWART_PATENTS/</a> | DRN BY: KRL<br>APPD BY: SAW<br>DWG NO. CT710011  | DATE 3/20/06<br>DATE 3-21-06<br>REV. A9 |