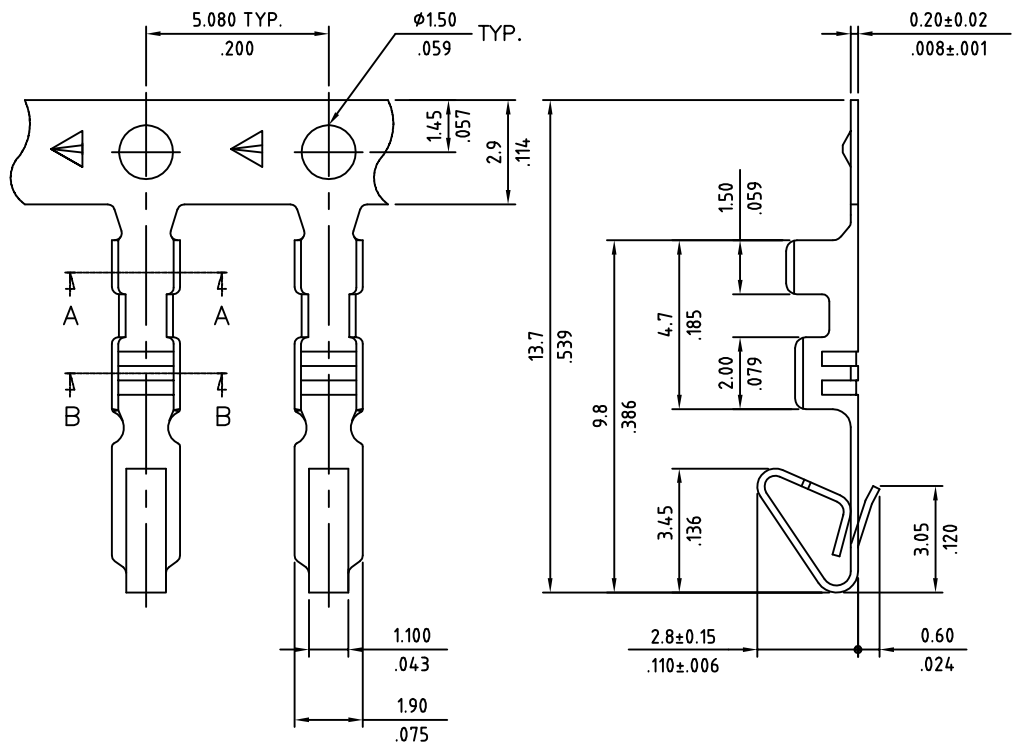


SIGN	DATE	DESCRIPTION	APPROVER
		<i>THIS IS CAD DRAWING, DO NOT REVISE MANUALLY!!!</i>	

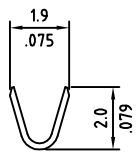


RoHS Compliant

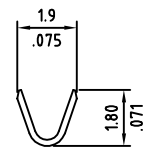
Plating: 80u"Min. Sn over 30u" Ni (STD)  
 Material: Copper Alloy  
 Plating method: E= Pre-tinned

Wire Range	Insulation Diameter	Reel Q'ty
AWG #22~#28	1.50 MAX. (.059)	10,000 PCS.

THESE DRAWINGS AND SPECIFICATIONS ARE THE PROPERTY OF ON-SHORE TECHNOLOGY, INC. AND SHALL NOT BE REPRODUCED, COPIED OR USED IN ANY MANNER WITHOUT THE PRIOR WRITTEN CONSENT OF ON-SHORE TECHNOLOGY, INC.



SEC: A-A



SEC: B-B



TITLE		2510-T Series - 2.54mm crimp terminal, 22-28 AWG				
PART NO.	2510-T	DWG NO.	2510-T.DWG			
APPROVED	CHECKED	DESIGNED	DRAWN	4250		
Shi Jun 2003.10.27	Marvin 2003.10.27	Marvin 2003.10.27	Marvin 2003.10.27	Tolerance		
					UNIT: mm	X.X ±0.20/.008
					SCALE: NONE	X.XX ±0.10/.004
				SHEET: 01/01	REV.: A	X.XXX ±0.05/.002
						X* ±1°