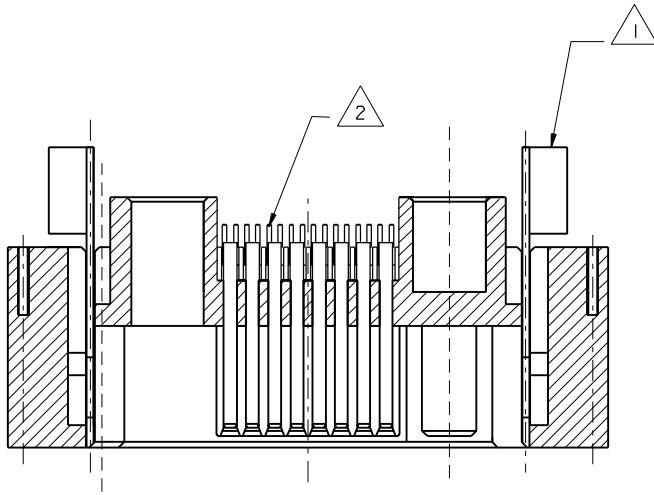
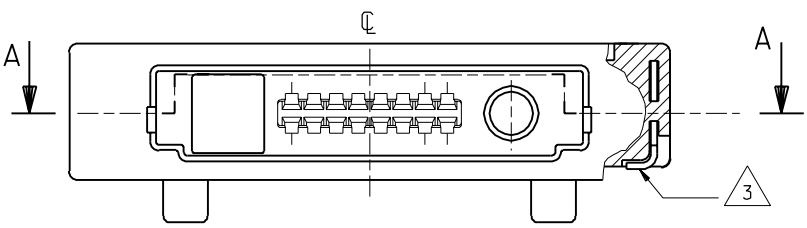
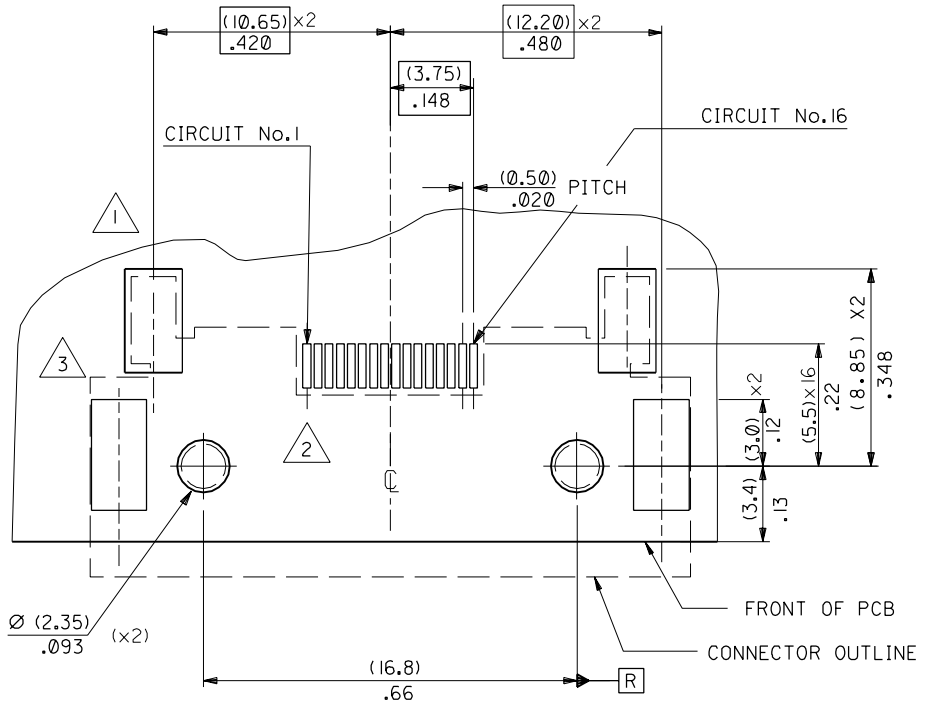


PART NO. SDA-90811-0108
 DWG. NO. 90811-0108



SECTION A-A



FOR MISSING DIMENSIONS SEE DRAWING SDA-90811-0109

COMPONENT	PCB PAD DIMENSION	QTY
LOCKING LATCHES 1	(2.60)/.102 x (4.65)/.183	⊕ (0.10) / .004 R (x2)
SIGNAL CONTACTS 2	(0.35 ± 0.05) / .014 ± 0.002 x (2.0) / .08	⊕ (0.10) / .004 R (x16)
SMT RETENTION PADS 3	(2.50) / .098 x (5.0) / .197	⊕ (0.10) / .004 R (x2)

FOR PREVIOUS DRAWING ISSUES SEE MRI.

ORIGINAL RELEASE ECN E50434 95.03.29 HDU	DIMENSIONS SHOWN (METRIC) INCH UNLESS OTHERWISE SPECIFIED TOLERANCES: ANGULAR ± 1/2°	DRWG BY HDU
LTR REVISIONS	INCH (METRIC)	CHK'D BY
	3 PLACE ± .002	APP'D BY
	2 PLACE ± .004 ± 0.05	SCALE
	1 PLACE ± 0.10	5:1
	DRAFT WHERE APPLICABLE MUST REMAIN WITHIN DIMENSIONS	
	DESIGN DIMENSION (PRIMARY) <input checked="" type="checkbox"/> (MM) <input type="checkbox"/> IN.	
	EQUIVALENT DIMENSION (SECONDARY) <input type="checkbox"/> (MM) <input checked="" type="checkbox"/> IN.	

REVISE ONLY ON CAD SYSTEM		SH.	REV.
CAD/CAM FILENAME 90811B DGN	THIS DRAWING CONTAINS INFORMATION THAT IS PROPRIETARY TO MOLEX INC. & SHOULD NOT BE USED WITHOUT WRITTEN PERMISSION		
TITLE I/O CONNECTOR FOR MOBILE PHONE			
MOLEX EUROPE		SHEET NO. 10F1	DATE 95/03/29
PART NO. 90811-0108	DWG. NO. SDA-90811-0108	SIZE B	