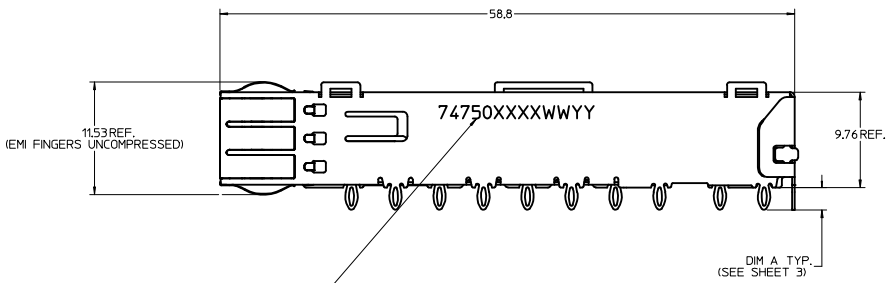
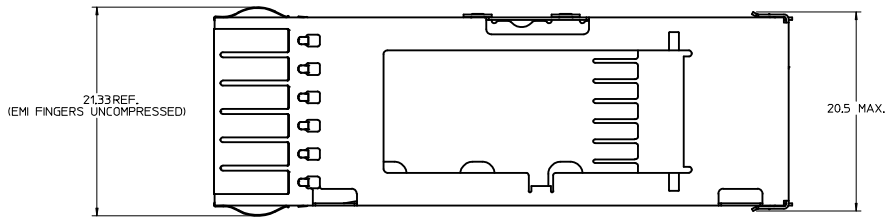


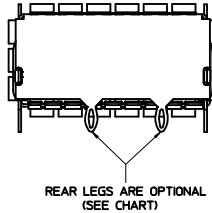
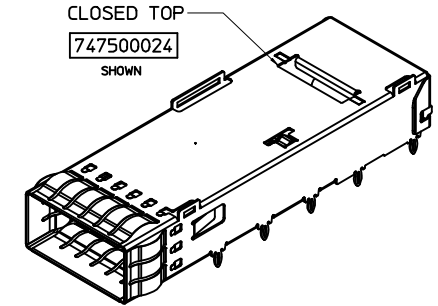
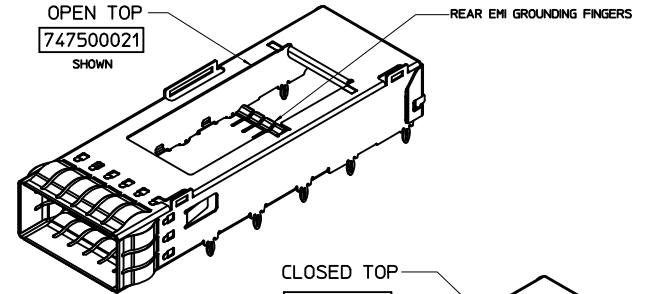
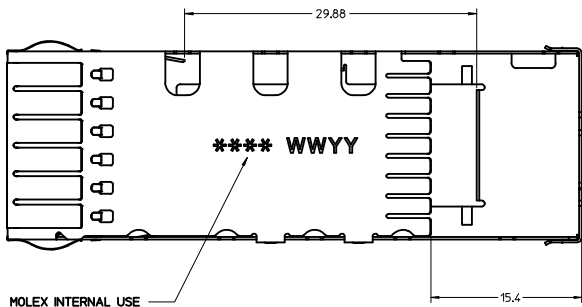
# CAGE DETAILS

(APPLIES TO ALL CAGES IN THIS DRAWING)



PART NO. AND WEEK/YEAR DATE CODE TO BE PRINTED ON SIDE OF COMPLETED CAGE ASSEMBLY AS SHOWN.

WEEK/YEAR DATE CODE TABLE	
WW	01 THRU 52 EXAMPLE: 01 = FIRST WEEK OF YEAR 52 = LAST WEEK OF YEAR
YY	11, 12, 13 ETC. EXAMPLE: YEAR 2013 = 13

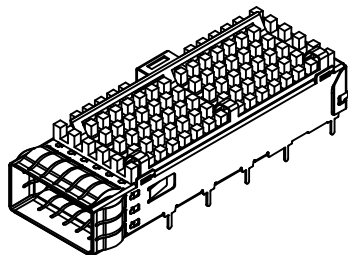
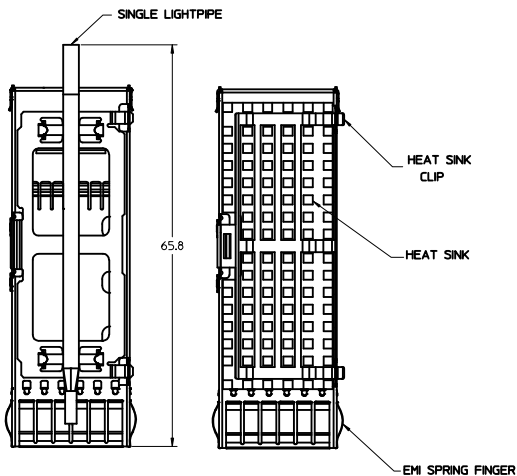


**NOTES:**

- PRESS FIT LEGS 2.28 / 3.05 mm LONG
- SOLDER POST LEGS 1.90 / 2.90 mm LONG
- SINGLE SIDED BOARD THICKNESS  
NOMINAL: 1.60  
MINIMUM: 1.44  
BELLY TO BELLY BOARD THICKNESS  
NOMINAL: 2.30  
MINIMUM: 2.07
- MATERIAL: COPPER ALLOY (PLATED PRIOR TO CUTTING AND FORMING)  
CAGE: 0.25 mm THICK COPPER ALLOY, NICKEL PLATED OR TIN  
SPRING FINGER: 0.08 mm THICK COPPER ALLOY, NICKEL PLATED  
HEAT SINK CLIP: STAINLESS STEEL  
LIGHT PIPES: POLYCARBONATE (UL 94-V0 RATED)  
HEATSINKS: ANNOXIDIZED ALUMINUM
- REFERENCE DOCUMENTS: PRODUCT SPECIFICATION: QSFP MSA
- CUSTOM HEATSHINKS AVAILABLE UPON REQUEST
- QSFP+ ASSEMBLES ALSO AVAILABLE IN 1X2 (74767 SERIES), 1X3 (74768 SERIES), 1X4 (74769 SERIES) AND 1X6 (74771 SERIES).
- PACKAGED IN TRAY.
- NO RoHS EXEMPTIONS.

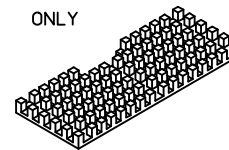
<b>SEE REVISION SHEET</b> EC NO: CPG2015-1999 DRAWN: ERWIN 2014/10/13 CHECKED: GABRIELLA 2014/10/13 APPROVED: BREED 2014/10/17 REV DESCRIPTION	QUALITY SYMBOLS ∇=0 ∇=0 ∇=0		GENERAL TOLERANCES (UNLESS SPECIFIED) mm INCH 4 PLACES ± --- ± --- 3 PLACES ± --- ± --- 2 PLACES ± 0.13 ± --- 1 PLACE ± 0.25 ± --- 0 PLACE ± --- ± --- ANGULAR ± 1 ° DRAFT WHERE APPLICABLE MUST REMAIN WITHIN DIMENSIONS		DIMENSION STYLE MM ONLY DRAWN BY DATE CHIRSCHY 2007/07/23 CHECKED BY DATE BRUSSELL 2007/07/23 APPROVED BY DATE RMAHOOD 2010/11/01 MATERIAL NO. SEE SHEET 3 DOCUMENT NO. SD-74750-0021		SCALE 4:1 DESIGN UNITS METRIC THIRD ANGLE PROJECTION		TITLE QSFP+ CAGE ASSEMBLY WITH SPRING FINGERS <b>molex</b>		SHEET NO. 1 OF 8	
	THIS DRAWING CONTAINS INFORMATION THAT IS PROPRIETARY TO MOLEX INCORPORATED AND SHOULD NOT BE USED WITHOUT WRITTEN PERMISSION											
	MOLEX INTERNAL USE											
	DRAWN BY DATE CHIRSCHY 2007/07/23 CHECKED BY DATE BRUSSELL 2007/07/23 APPROVED BY DATE RMAHOOD 2010/11/01											

# CAGE ASSEMBLY OPTIONS

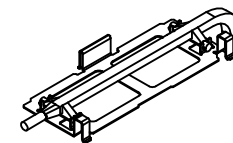


## HEATSHINK AND LIGHT PIPE OPTIONS

HEAT SINK ONLY

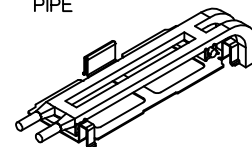


SINGLE LIGHT PIPE

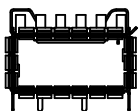


MOLEX P/N: 747500030

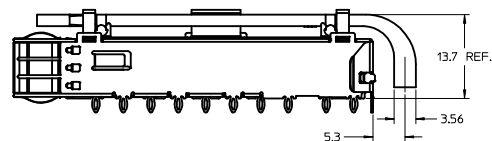
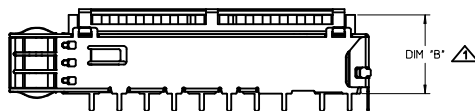
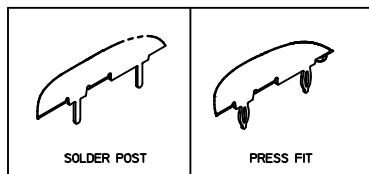
DUAL LIGHT PIPE



MOLEX P/N: 747500031



LEG TYPE OPTIONS

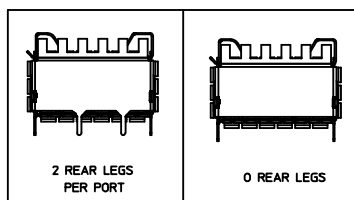


HEATSINK HEIGHT OPTIONS

OVERALL HEATSINK HEIGHT	DIM B	TOL
PCI	13.7	+0.25
SAN	16.0	-0.73
NET	23.0	

▲ HEIGHT OF HEATSINK WITH MODULE INSERTED.  
DIMENSION MAY BE LESS DUE TO MODULE AND HEATSINK VARIATIONS.

REAR LEG OPTIONS



SEE REVISION SHEET	QUALITY SYMBOLS	GENERAL TOLERANCES (UNLESS SPECIFIED)	DIMENSION STYLE		SCALE	DESIGN UNITS	THIRD ANGLE PROJECTION
			MM ONLY	INCH			
EC NO: CPG2015-1999	▽=0	4 PLACES ± --- ± ---	DATE	DATE	2.5:1	METRIC	
2014/10/13	▽=0	3 PLACES ± --- ± ---	CHIRSCHY	2007/07/23			
2014/10/13	▽=0	2 PLACES ± 0.13 ± ---	CHECKED BY	DATE			
2014/10/17	▽=0	1 PLACE ± 0.25 ± ---	BRUSSELL	2007/07/23			
APP:RSBREED		0 PLACE ± --- ± ---	APPROVED BY	DATE			
		ANGULAR ± 1 °	RAHMOOD	2010/11/01			
		DRAFT WHERE APPLICABLE MUST REMAIN WITHIN DIMENSIONS	MATERIAL NO.	DATE			
			SEE SHEET 3				
			DOCUMENT NO.				
			SD-74750-0021				
			SHEET NO.				
			2 OF 8				

QSFP+ CAGE ASSEMBLY WITH SPRING FINGERS

**molex**

SD-74750-0021

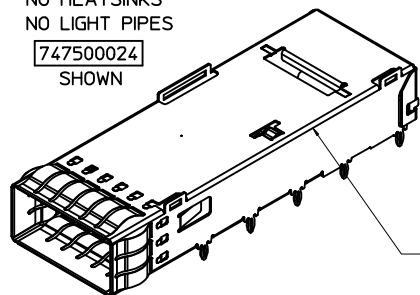
SHEET NO. 2 OF 8

THIS DRAWING CONTAINS INFORMATION THAT IS PROPRIETARY TO MOLEX INCORPORATED AND SHOULD NOT BE USED WITHOUT WRITTEN PERMISSION

## PART NUMBER SELECTION

NO HEATSINKS  
NO LIGHT PIPES

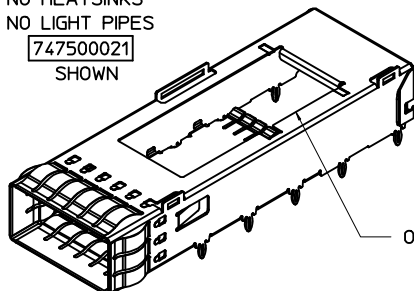
**747500024**  
SHOWN



CLOSED TOP

NO HEATSINKS  
NO LIGHT PIPES

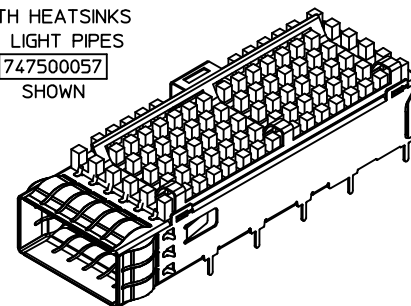
**747500021**  
SHOWN



OPEN TOP

WITH HEATSINKS  
NO LIGHT PIPES

**747500057**  
SHOWN



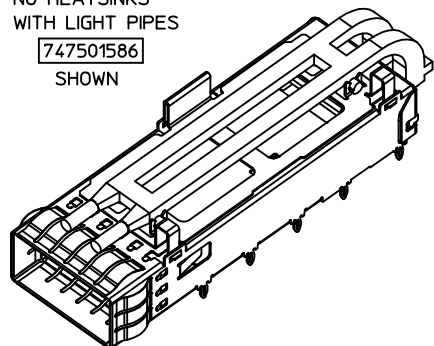
MOLEX P/N		# OF REAR LEGS PER PORT	DIM A	PLATING
LEG TYPE PRESS FIT	LEG TYPE SOLDER POST			
747500024	---	2	2.28	NICKEL
---	747500051	2	1.9	NICKEL
---	747500053	2	1.9	MATTE TIN
---	747500056	2	1.9	BRIGHT TIN

MOLEX P/N		# OF REAR LEGS PER PORT	DIM A	PLATING
LEG TYPE PRESS FIT	LEG TYPE SOLDER POST			
747500012	---	2	3.05	NICKEL
747500021	---	2	2.28	NICKEL
747500023	---	0	2.28	NICKEL
---	747500058	2	2.90	NICKEL
---	747500062 *	2	2.90	NICKEL

MOLEX P/N		# OF REAR LEGS PER PORT	DIM A	DIM B	PLATING
LEG TYPE PRESS FIT	LEG TYPE SOLDER POST				
---	747500057	2	2.9	13.7	NICKEL
747500040	---	2	2.28	16.0	NICKEL
747500042	---	0	2.28	16.0	NICKEL
747500044	---	2	2.28	13.7	NICKEL
747500046	---	2	2.28	23.0	NICKEL

NO HEATSINKS  
WITH LIGHT PIPES

**747501586**  
SHOWN



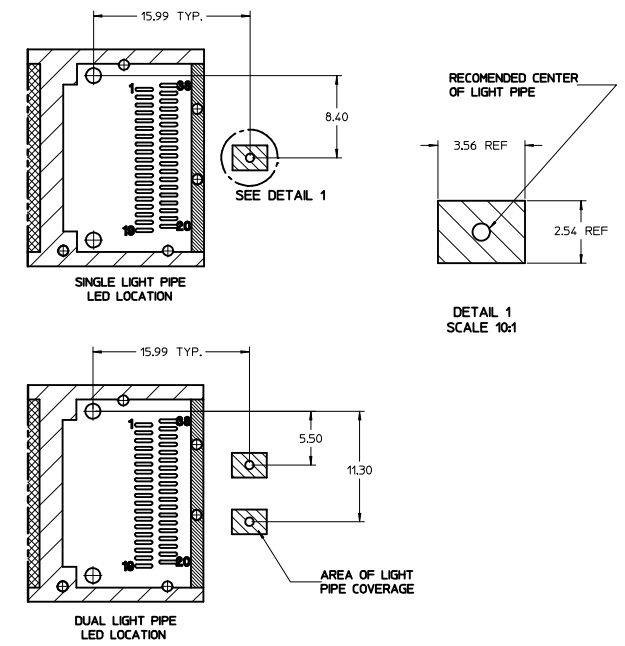
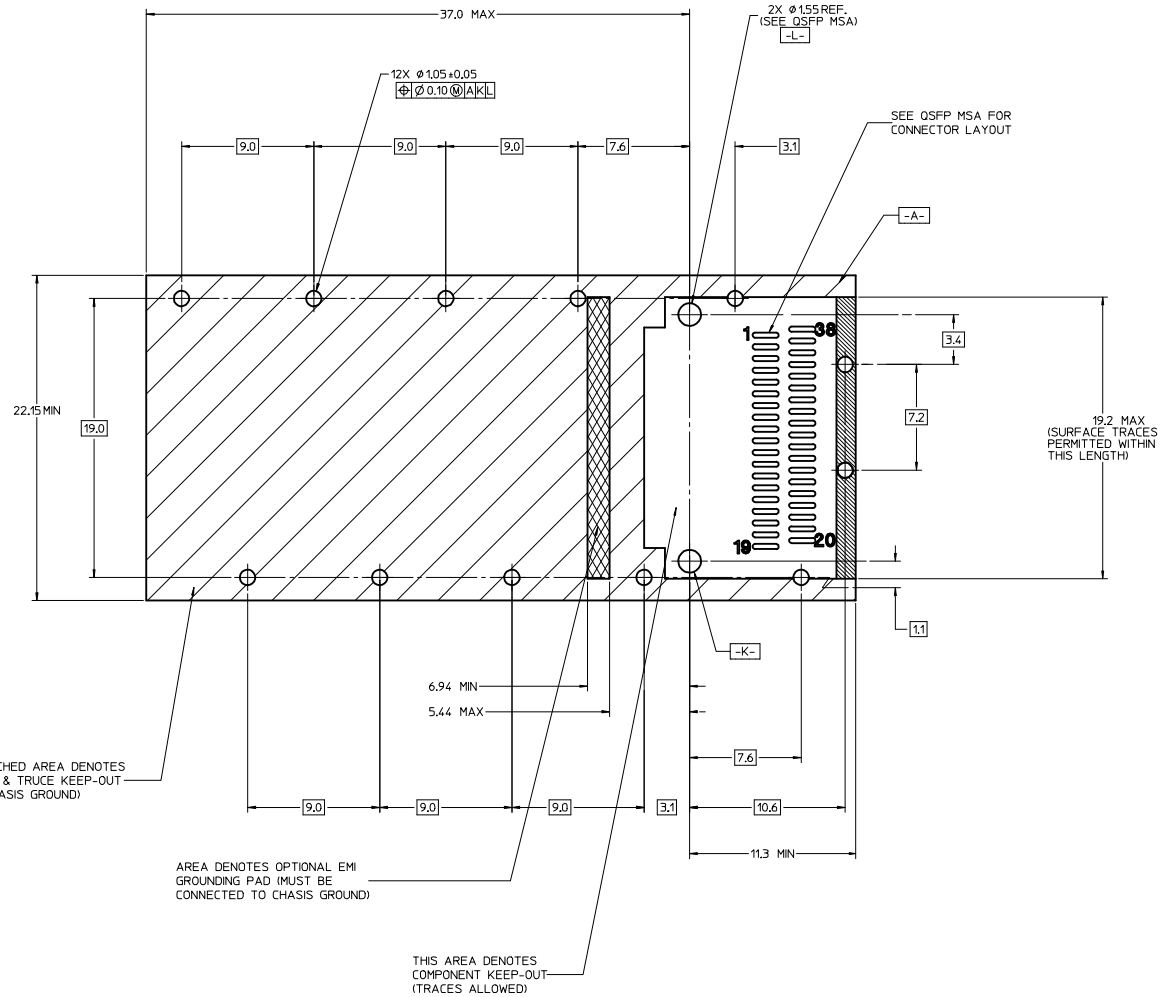
MOLEX ASSEMBLY P/N	MOLEX P/N		LIGHT PIPE ASSEMBLY P/N	#OF REAR LEGS PER PORT	DIM A	PLATING
	LEG TYPE PRESS FIT	LEG TYPE SOLDER POST				
747501586	747500024	---	747500031	2	2.28	NICKEL

\* HEATSINK/LIGHT PIPE CLIP FEATURE REMOVED.

SEE REVISION SHEET IEC NO. CPG2015-1999 DRAWN: LERMIN 2014/10/13 CHECKED: GARDELLA 2014/10/13 APPR: BREED 2014/10/17 REV: DESCRIPTION	QUALITY SYMBOLS	GENERAL TOLERANCES (UNLESS SPECIFIED)	DIMENSION STYLE	SCALE	DESIGN UNITS	THIRD ANGLE PROJECTION	
	∇=0 ∇=0 ∇=0	mm    INCH 4 PLACES ± --- ± --- 3 PLACES ± --- ± --- 2 PLACES ± 0.13 ± --- 1 PLACE ± 0.25 ± --- 0 PLACE ± --- ± ---	MM ONLY	3:1	METRIC	DRAWN BY: CHIRSCHY CHECKED BY: BRUSSELL APPROVED BY: RMAHMOOD DATE: 2007/07/23 DATE: 2007/07/23 DATE: 2010/11/01	TITLE: QSFP+ CAGE ASSEMBLY WITH SPRING FINGERS MATERIAL NO. SEE SHEET 3 DOCUMENT NO. SD-74750-0021
	ANGULAR ± 1° DRAFT WHERE APPLICABLE MUST REMAIN WITHIN DIMENSIONS	SIZE D THIS DRAWING CONTAINS INFORMATION THAT IS PROPRIETARY TO MOLEX INCORPORATED AND SHOULD NOT BE USED WITHOUT WRITTEN PERMISSION					
							SHEET NO. 3 OF 8

# PCB LAYOUT FOR SINGLE SIDED APPLICATIONS

# FOR CAGE ASSEMBLIES WITH LIGHT PIPES



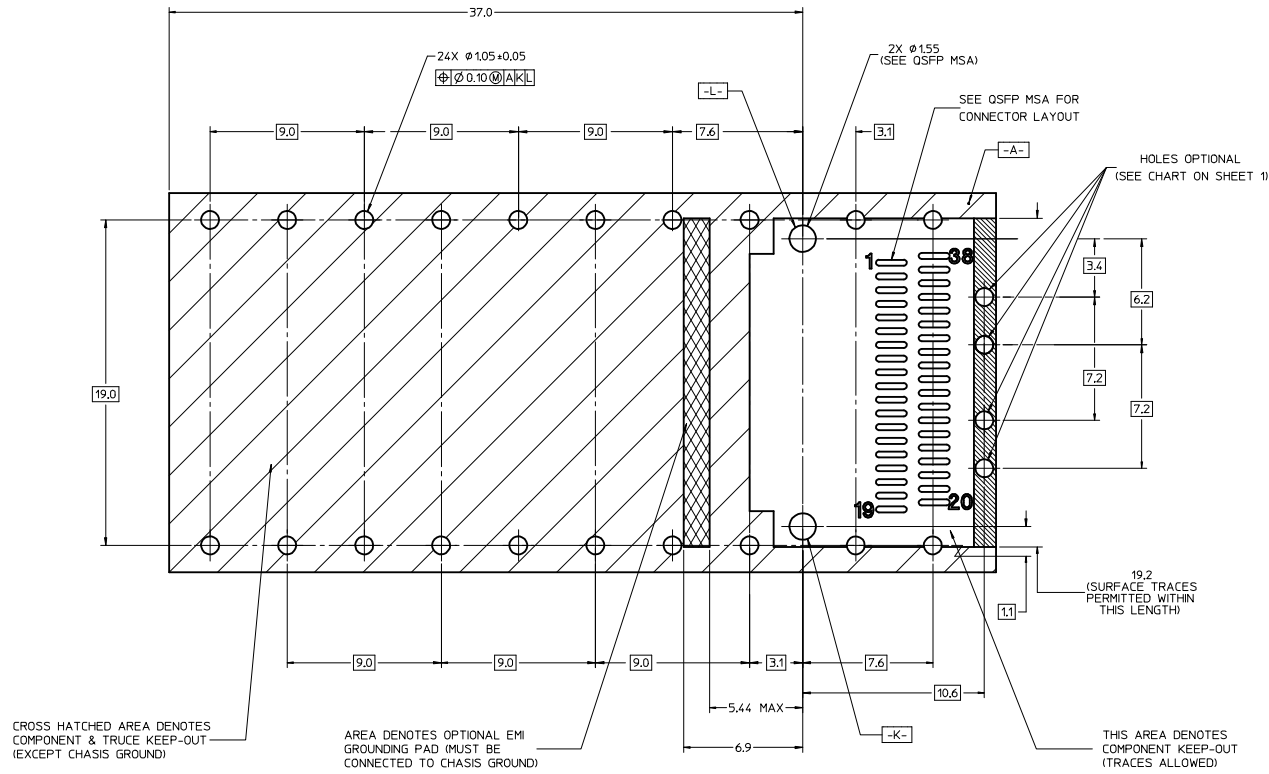
**NOTES:**

1. DATUM -A- IS TOP SURFACE OF HOST BOARD PER MSA
2. FINISHED HOLE SIZE (AFTER PLATING)
3. DATUM -K- IS HOST BOARD THRU HOLE #1 TO ACCEPT CONNECTOR GUIDE POST PER MSA
4. DATUM -L- IS HOST BOARD THRU HOLE #2 TO ACCEPT CONNECTOR GUIDE POST PER MSA

<b>SEE REVISION SHEET</b> EC NO: CPG2015-1999 DRAWN BY: LERMIN CHYKOBARDILLA 2014/10/13 APPROVED: BREED 2014/10/17	<b>QUALITY SYMBOLS</b> ∇=0 ∇=0 ∇=0		<b>GENERAL TOLERANCES (UNLESS SPECIFIED)</b> <table border="1"> <tr> <th></th> <th>mm</th> <th>INCH</th> </tr> <tr> <td>4 PLACES</td> <td>±0.13</td> <td>±0.005</td> </tr> <tr> <td>3 PLACES</td> <td>±0.25</td> <td>±0.010</td> </tr> <tr> <td>2 PLACES</td> <td>±0.50</td> <td>±0.020</td> </tr> <tr> <td>1 PLACE</td> <td>±1.00</td> <td>±0.040</td> </tr> <tr> <td>0 PLACE</td> <td>±1.50</td> <td>±0.060</td> </tr> </table>			mm	INCH	4 PLACES	±0.13	±0.005	3 PLACES	±0.25	±0.010	2 PLACES	±0.50	±0.020	1 PLACE	±1.00	±0.040	0 PLACE	±1.50	±0.060	<b>DIMENSION STYLE</b> MM ONLY		<b>SCALE</b> 1:1		<b>DESIGN UNITS</b> METRIC		THIRD ANGLE PROJECTION	
		mm	INCH																											
	4 PLACES	±0.13	±0.005																											
	3 PLACES	±0.25	±0.010																											
2 PLACES	±0.50	±0.020																												
1 PLACE	±1.00	±0.040																												
0 PLACE	±1.50	±0.060																												
DRAFT WHERE APPLICABLE MUST REMAIN WITHIN DIMENSIONS			ANGULAR ± 1 °		DRAWN BY: CHIRSCHY DATE: 2007/07/23		CHECKED BY: BRUSSELL DATE: 2007/07/23		APPROVED BY: MAHMOOD DATE: 2010/11/01																					
MATERIAL NO.						DATE:																								
SEE SHEET 3						TITLE: QSFP+ CAGE ASSEMBLY WITH SPRING FINGERS																								
SHEET NO. 4 OF 8						DOCUMENT NO. SD-74750-0021																								

THIS DRAWING CONTAINS INFORMATION THAT IS PROPRIETARY TO MOLEX INCORPORATED AND SHOULD NOT BE USED WITHOUT WRITTEN PERMISSION

# PCB LAYOUT FOR BELLY-TO-BELLY APPLICATIONS



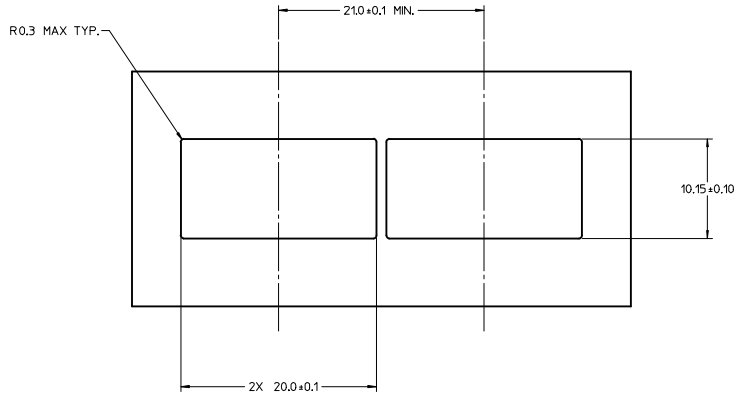
NOTE:  
FOR RECOMENDED CENTER  
OF LIGHT PIPES,  
SEE SHEET 4

**NOTES:**

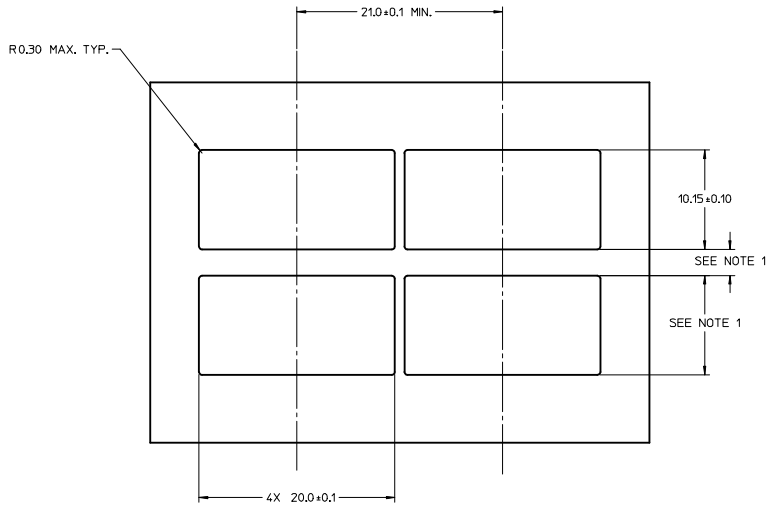
1. DATUM -A- IS TOP SURFACE OF HOST BOARD PER MSA.
2. FINISHED HOLE SIZE (AFTER PLATING).
3. DATUM -K- IS HOST BOARD THRU HOLE #1 TO ACCEPT CONNECTOR GUIDE POST PER MSA.
4. DATUM -L- IS HOST BOARD THRU HOLE #2 TO ACCEPT CONNECTOR GUIDE POST PER MSA.

<b>SEE REVISION SHEET</b> EEC NO: CPG2015-1999 DRAWN BY: LERMIN CHYKOBARELLA APPROVED: APPREBRED 2014/10/13 2014/10/13 2014/10/17	<b>QUALITY SYMBOLS</b> ∇=0 ∇=0 ∇=0	<b>GENERAL TOLERANCES (UNLESS SPECIFIED)</b>		<b>DIMENSION STYLE</b> MM ONLY	SCALE 1:1	DESIGN UNITS METRIC	THIRD ANGLE PROJECTION	
		4 PLACES ± 0.13 ± 0.13 ± 0.25 ± 0.25	mm INCH	DRAWN BY CHIRSCHY	DATE 2007/07/23	TITLE QSFP+ CAGE ASSEMBLY WITH SPRING FINGERS		
		DRAFT WHERE APPLICABLE MUST REMAIN WITHIN DIMENSIONS	ANGULAR ± 1 °	APPROVED BY RMAHMOOD	DATE 2010/11/01	MATERIAL NO. SEE SHEET 3 DOCUMENT NO. SD-74750-0021		
				SHEET NO. 5 OF 8		THIS DRAWING CONTAINS INFORMATION THAT IS PROPRIETARY TO MOLEX INCORPORATED AND SHOULD NOT BE USED WITHOUT WRITTEN PERMISSION		

BEZEL AND BOARD POSITION DIMENSIONS  
FOR SINGLE SIDE MOUNTING



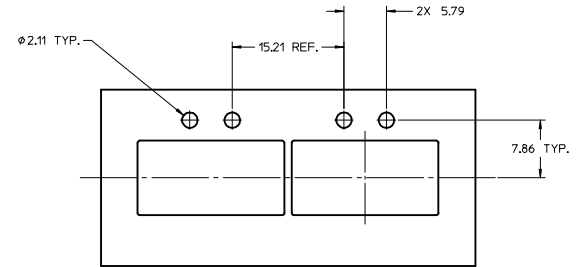
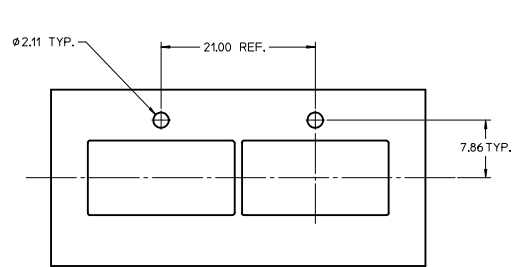
BEZEL AND BOARD POSITION DIMENSIONS  
FOR BELLY-TO-BELLY MOUNTING



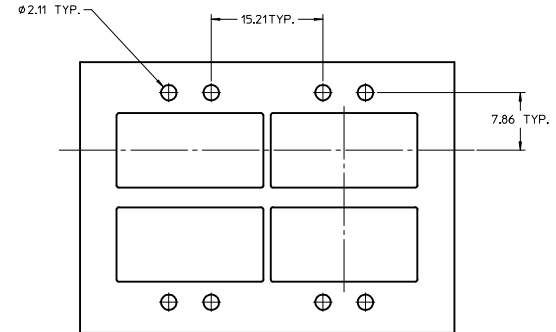
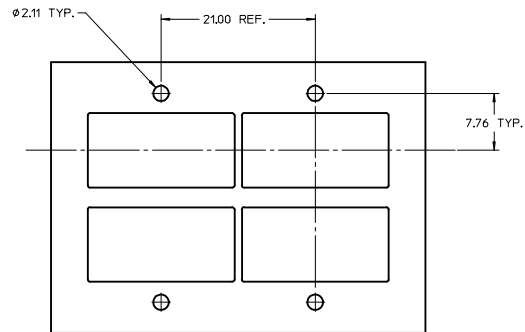
NOTE:  
1. SEE QSFP MSA SPECIFICATION FOR BEZEL LOCATION TOLERANCE.  
2. PCB THICKNESS VARIATION MUST BE CONSIDERED WHEN DETERMINING BEZEL OPENING, SIZE, AND LOCATION.

SEE REVISION SHEET IEC NO. CPG2015-1999 DRAWN: LERMIN 2014/10/13 CHECKED: GARDELLA 2014/10/13 APPR: BREED 2014/10/17	QUALITY SYMBOLS	GENERAL TOLERANCES (UNLESS SPECIFIED)	DIMENSION STYLE	SCALE	DESIGN UNITS	THIRD ANGLE PROJECTION
	▽=0	mm INCH	MM ONLY	1:1	METRIC	☉
	▽=0	4 PLACES ± --- ± ---	DRAWN BY DATE	TITLE		
	▽=0	3 PLACES ± 0.13 ± ---	CHECKED BY DATE	QSFP+ CAGE ASSEMBLY WITH SPRING FINGERS		
	ANGULAR ± 1°	DRAFT WHERE APPLICABLE MUST REMAIN WITHIN DIMENSIONS	APPROVED BY DATE	DOCUMENT NO.		
			RM AHMOOD 2010/11/01	SD-74750-0021		
			MATERIAL NO.	SHEET NO.		
			SEE SHEET 3	6 OF 8		
			THIS DRAWING CONTAINS INFORMATION THAT IS PROPRIETARY TO MOLEX INCORPORATED AND SHOULD NOT BE USED WITHOUT WRITTEN PERMISSION			

BEZEL LIGHT PIPE CUTOUT POSITION DIMENSIONS  
FOR SINGLE SIDE MOUNTING



BEZEL LIGHT PIPE CUTOUT POSITION DIMENSIONS  
FOR BELLY-TO-BELLY MOUNTING

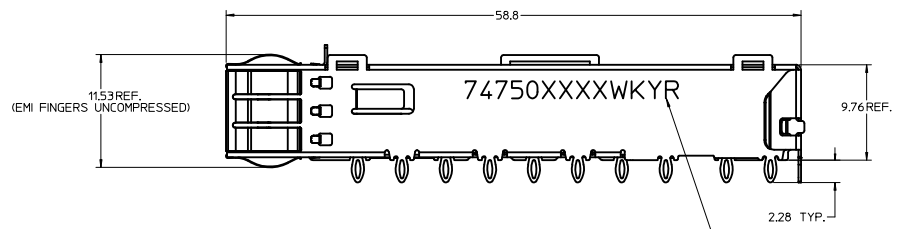
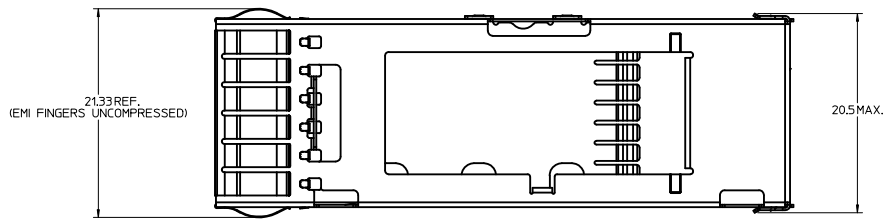


SEE REVISION SHEET IEC NO. CPG2015-1999 DRAWN: LERMIN 2014/10/13 CHECKED: GARDELLA 2014/10/13 APPR: BREED 2014/10/17	QUALITY SYMBOLS	GENERAL TOLERANCES (UNLESS SPECIFIED)	DIMENSION STYLE	SCALE	DESIGN UNITS	THIRD ANGLE PROJECTION
	$\nabla=0$	mm INCH	MM ONLY	3:1	METRIC	
	$\nabla=0$	4 PLACES ± --- ± ---	DRAWN BY DATE	TITLE QSFP+ CAGE ASSEMBLY WITH SPRING FINGERS		
	$\nabla=0$	3 PLACES ± --- ± ---	CHIRSCHY 2007/07/23			
	2 PLACES ± 0.13 ± ---	CHECKED BY DATE	DOCUMENT NO. SD-74750-0021			
	1 PLACE ± 0.25 ± ---	BRUSSELL 2007/07/23				
	0 PLACE ± --- ± ---	APPROVED BY DATE	SHEET NO. 7 OF 8			
	ANGULAR ± 1 °	RAHMOOD 2010/11/01				
	DRAFT WHERE APPLICABLE MUST REMAIN WITHIN DIMENSIONS	MATERIAL NO.	THIS DRAWING CONTAINS INFORMATION THAT IS PROPRIETARY TO MOLEX INCORPORATED AND SHOULD NOT BE USED WITHOUT WRITTEN PERMISSION			
		SEE SHEET 3				

DATE	REV	DESCRIPTION
2007/07/23	A	INITAL RELEASE
2007/08/06	B	CHANGED ALL TANGENT LINES FROM DASHED LINES TO SOLID LINES
2007/08/10	C	1. ADDED COMPONENT P/N COLUMN TO TABLE 2. ADDED 'COMPONENT' TO NOTE IN BOTTOM VIEW ON SHEET 1 3. CHANGED TEXT IN MATERIAL NO. SECTION OF TITLE BLOCK TO READ 'SEE TABLE'
2008/07/10	D	1. REMOVED COMMENTS FROM TABLE ON SHEET 1 2. ADDED 'HOLES OPTIONAL' NOTE TO PCB LAYOUT ON SHEET 2 AND SHEET 3 3. ADDED 747500024 TO TABLE ON SHEET 1 AS WELL AS ISO VIEW 4. UPDATED 'COMPONENT PART NUMBER AND DATE CODE' NOTE ON SHEET 1
2008/12/16	E	1. 20.4 DIMENSION WAS 20.38 REF. 2. 58.8 DIMENSION WAS 58.80 REF. 3. 2.28 TYP. DIMENSION WAS 2.28 REF. 4. 15.4 DIMENSION WAS 15.40 REF.
2009/04/13	F	1. REVISED COMPONENT P/N FOR MOLEX P/N 747500024 (CHANGED FROM 747540104 TO 747500104)
2010/10/29	G	1. 20.5 MAX DIMENSION WAS 20.4 2. 19.2 MAX DIMENSION WAS 16.2 MAX
2011/04/05	H	1. ADDED PRINTED DATE CODE TO LEFT SIDE OF CAGE AND ASSOCIATED NOTES. 2. ADDED CUTAWAY 1 AND CRITICAL TO FUNCTION DIMENSION 29.88 ±0.15, SHEET 1. 3. REMOVED 74750 FROM BOTTOM OF CAGE, SHEET 1. 4. UPDATED RoHS NOTE (NOTE 5) TO 'LEAD FREE, NO RoHS EXEMPTIONS' ON SHEET 1. 5. ADDED END VIEW, SHEET 1.
2012/04/13	I	1. ADDED 747500012 TO P/N TABLE, SHEET 1. 2. UPDATED BELLY-TO-BELLY CAGE VIEW, SHEET 3. 3. ADDED BELLY-TO-BELLY BEZEL AND DIMENSIONS, SHEET 3.
2013/01/10	J	1. ADDED 747500057 AND 747500058 INTO P/N TABLE, SHEET 3. 2. REARRANGE EACH SHEET
2013/04/09	K	1. ADDED P/N 747500062 TO CHART ON PAGE 3. 2. UPDATED DIMENSION 9.77 TO 9.76 BY CORRECTING PLACEMENT ON VIEWS SHEET 6.
2014/10/13	L	1. ADDED P/N 747501586 AND ISO VIEW TO SHEET 3.

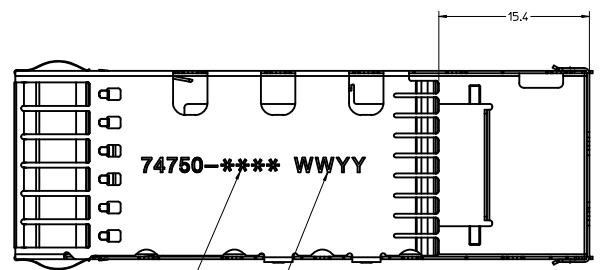
<b>SEE REVISION SHEET</b> EC NO: CPG2015-1999 DRAWN: ERWIN 2014/10/13 CHECKED: GABRIELLA 2014/10/13 APPROVED: BREED 2014/10/17	QUALITY SYMBOLS ∇=0 ∇=0 ∇=0	GENERAL TOLERANCES (UNLESS SPECIFIED): mm INCH 4 PLACES ±--- ±--- 3 PLACES ±--- ±--- 2 PLACES ±0.13 ±--- 1 PLACE ±0.25 ±--- 0 PLACE ±--- ±---	DIMENSION STYLE <b>MM ONLY</b>	SCALE <b>1:1</b>	DESIGN UNITS <b>METRIC</b>	THIRD ANGLE PROJECTION	
		DRAWN BY DATE CHIRSCHY 2007/07/23	CHECKED BY DATE BRUSSELL 2007/07/23	APPROVED BY DATE RMAHMOOD 2010/11/01	MATERIAL NO. <b>SEE SHEET 3</b>	DOCUMENT NO. <b>SD-74750-0021</b>	SHEET NO. 8 OF 8
		DRAFT WHERE APPLICABLE MUST REMAIN WITHIN DIMENSIONS					
		THIS DRAWING CONTAINS INFORMATION THAT IS PROPRIETARY TO MOLEX INCORPORATED AND SHOULD NOT BE USED WITHOUT WRITTEN PERMISSION					





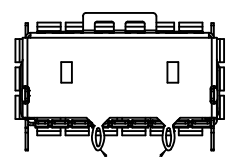
PART NO. AND WEEK/YEAR DATE CODE TO BE PRINTED ON SIDE OF COMPLETED CAGE ASSEMBLY APPROXIMATELY AS SHOWN. SEE TABLE BELOW FOR DATE CODE INFORMATION.

WEEK/YEAR DATE CODE TABLE	
WEEK - 01 THRU 52	EXAMPLE: 01 - FIRST WEEK OF YEAR 52 - LAST WEEK OF YEAR
YEAR - 10, 11, 12 ETC.	EXAMPLE: YEAR 2010 - 10

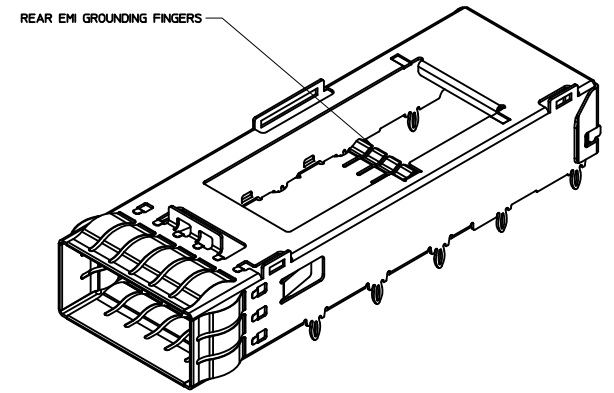


COMPONENT PART NUMBER (SEE TABLE)

COMPONENT DATE CODE



REAR PINS ARE OPTIONAL (SEE CHART)



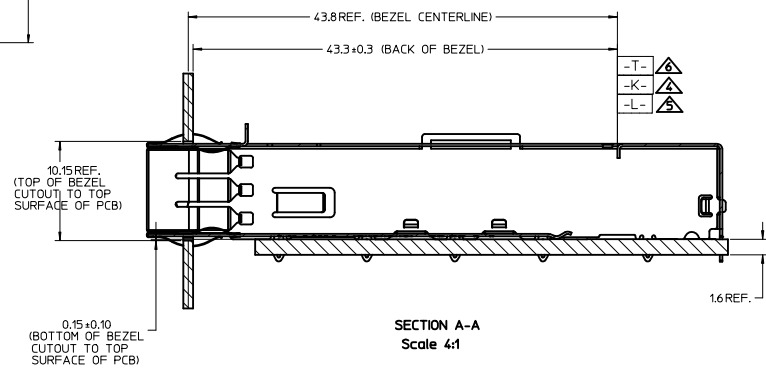
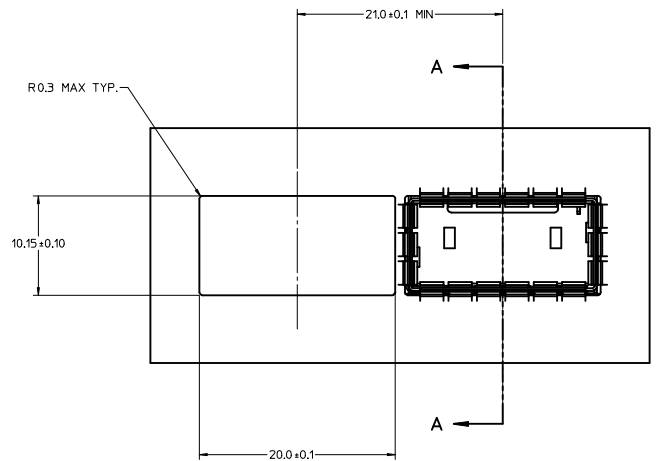
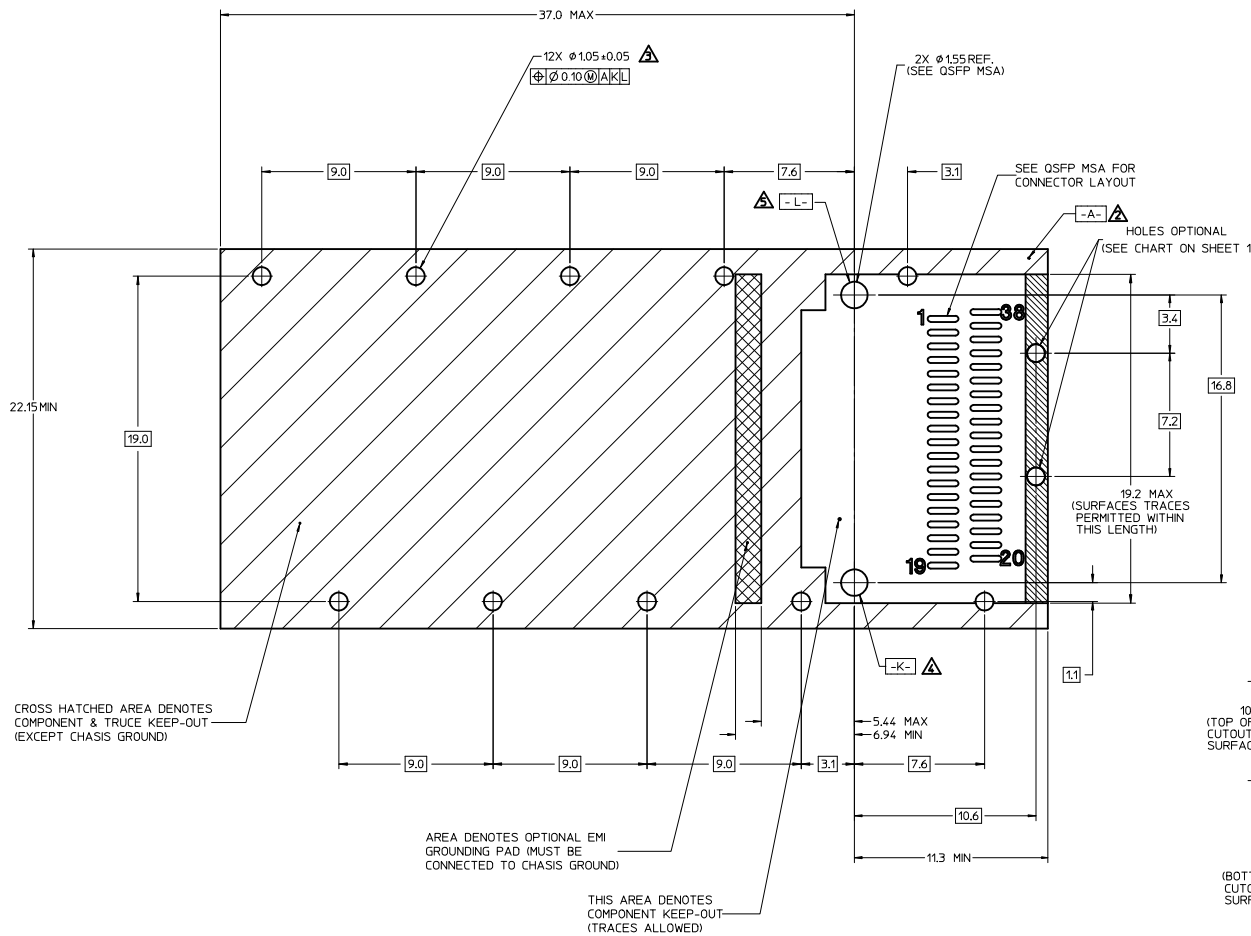
FINISHED ASSEMBLY P/N	COMPONENT P/N (CAGE)	# OF REAR LEGS	COMMENTS
747500092	747500112	2	OPEN TOP FOR HEAT SINK
747500093	747500113	0	OPEN TOP FOR HEAT SINK

NOTES:

- PRESS FIT LEGS 2.28mm [0.090"] LONG
- SINGLE SIDED BOARD THICKNESS  
 NOMINAL: 1.60 [0.062"]  
 MINIMUM: 1.44 [0.057"]  
 BELLY TO BELLY BOARD THICKNESS  
 NOMINAL: 2.30 [0.090"]  
 MINIMUM: 2.07 [0.081"]
- MATERIAL: COPPER ALLOY (PLATED PRIOR TO CUTTING AND FORMING)  
 PLATING: NICKEL
- REFERENCE DOCUMENTS:  
 PRODUCT SPECIFICATION: QSFP MSA
- THIS PART MEETS THE RESTRICTION OF HAZARDOUS SUBSTANCES IN ELECTRICAL AND ELECTRONIC EQUIPMENT (ROHS) DIRECTIVE (2002/95/EC).

INITIAL RELEASE EC NO: USY2011-0437 DRAWN: JERWIN 2010/09/20 CHECKED: CHIRSCHY 2010/09/20 APPROVED: RMAHMOOD 2010/12/20	QUALITY SYMBOLS	GENERAL TOLERANCES (UNLESS SPECIFIED)	DIMENSION STYLE	SCALE	DESIGN UNITS	THIRD ANGLE PROJECTION
	▼=0 ▽=0	mm INCH	MM ONLY	4:1	METRIC	
		4 PLACES ±--- ±---	DRAWN BY	DATE	TITLE	
		3 PLACES ±--- ±---	JERWIN	2010/09/20	QSFP CAGE ASSEMBLY W/ SPRING FINGERS	
		2 PLACES ±0.13 ±---	CHECKED BY	DATE		
		1 PLACE ±0.25 ±---	CHIRSCHY	2010/09/20		
		ANGULAR ± 1°	APPROVED BY	DATE		
			RMAHMOOD	2010/12/20		
		DRAFT WHERE APPLICABLE MUST REMAIN WITHIN DIMENSIONS	MATERIAL NO.	DOCUMENT NO.	MOLEX INCORPORATED	
			SEE TABLE	SD-74750-0092	SHEET NO. 1 OF 4	
			THIS DRAWING CONTAINS INFORMATION THAT IS PROPRIETARY TO MOLEX INCORPORATED AND SHOULD NOT BE USED WITHOUT WRITTEN PERMISSION			

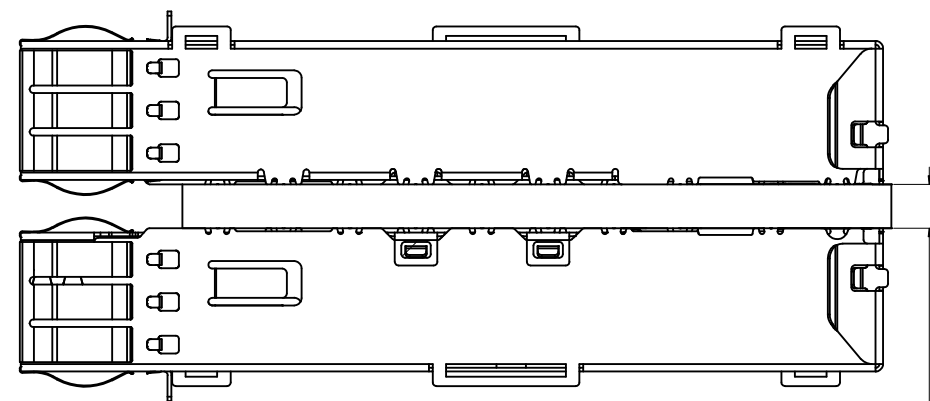
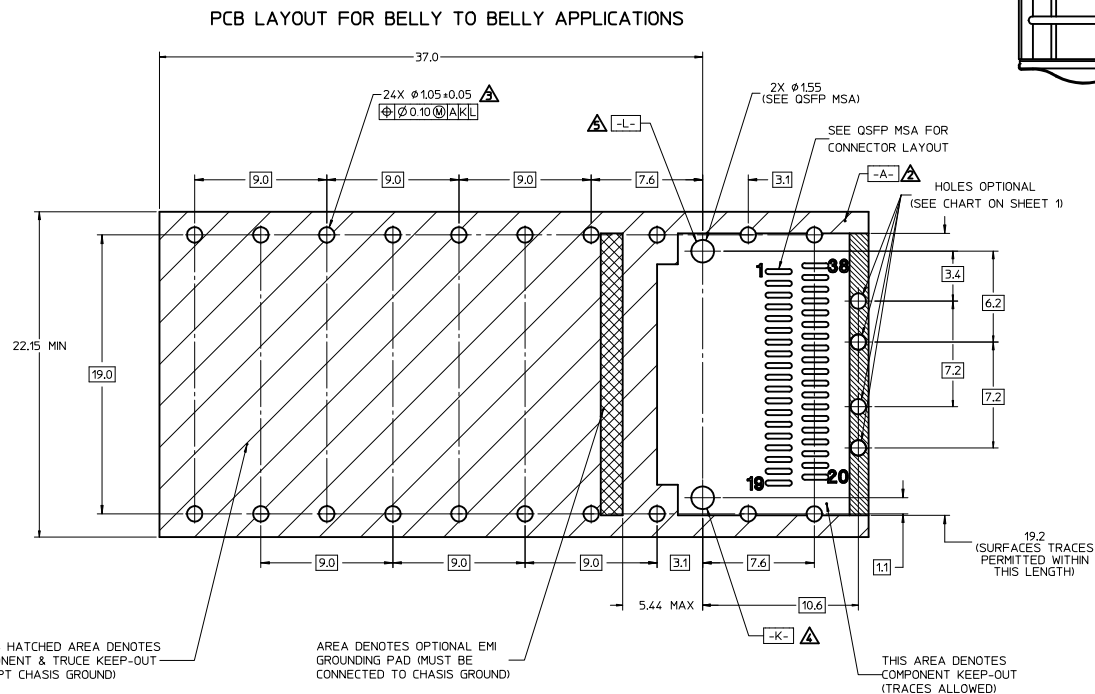
# PCB LAYOUT FOR SINGLE SIDED APPLICATIONS



## NOTES:

1. DATUM -A- IS TOP SURFACE OF HOST BOARD PER MSA
2. FINISHED HOLE SIZE (AFTER PLATING)
3. DATUM -K- IS HOST BOARD THRU HOLE #1 TO ACCEPT CONNECTOR GUIDE POST PER MSA
4. DATUM -L- IS HOST BOARD THRU HOLE #2 TO ACCEPT CONNECTOR GUIDE POST PER MSA
5. DATUM -T- IS HARD STOP ON CAGE PER MSA

<b>INITIAL RELEASE</b> EC NO: USY2011-0437 DRAWN BY: JERWIN CHYKHIRSCHY APPR: RAHMUOD 20/09/20 20/09/20 20/09/20 20/12/20	QUALITY SYMBOLS		GENERAL TOLERANCES (UNLESS SPECIFIED)		DIMENSION STYLE		SCALE		DESIGN UNITS		THIRD ANGLE PROJECTION	
	▽=0 ▽=0		mm    INCH 4 PLACES ± --- ± --- 3 PLACES ± --- ± --- 2 PLACES ± 0.13 ± --- 1 PLACE ± 0.25 ± --- ANGULAR ± 1°		MM ONLY DATE DATE DATE DATE		1:1		METRIC		QSFPA CAGE ASSEMBLY W/ SPRING FINGERS	
	DRAFT WHERE APPLICABLE MUST REMAIN WITHIN DIMENSIONS		WATERL NO. <b>SEE TABLE</b>		MOLEX INCORPORATED		DOCUMENT NO. SD-74750-0092		SHEET NO. 2 OF 4		MOLEX INCORPORATED	
	SIZE D		THIS DRAWING CONTAINS INFORMATION THAT IS PROPRIETARY TO MOLEX INCORPORATED AND SHOULD NOT BE USED WITHOUT WRITTEN PERMISSION									



NOTE:  
BEZEL CUTOUT LOCATIONS FOR BELLY TO BELLY APPLICATIONS  
ARE DEPENDENT ON PCB THICKNESS

- NOTES:
1. SEE QSFP MSA SPECIFICATION FOR BEZEL LOCATION TOLERANCE
  2. DATUM -A- IS TOP SURFACE OF HOST BOARD PER MSA
  3. FINISHED HOLE SIZE (AFTER PLATING)
  4. DATUM -K- IS HOST BOARD THRU HOLE #1 TO ACCEPT CONNECTOR GUIDE POST PER MSA
  5. DATUM -L- IS HOST BOARD THRU HOLE #2 TO ACCEPT CONNECTOR GUIDE POST PER MSA

INITIAL RELEASE EC NO: USY2011-0437 DRAWN BY: JERWIN CHYKCHRSCHY 2010/09/20 APPROVED BY: RAHMOOD 2010/12/20	QUALITY SYMBOLS ▽=0 ▽=0	GENERAL TOLERANCES (UNLESS SPECIFIED)		DIMENSION STYLE <b>MM ONLY</b>	SCALE <b>1:1</b>	DESIGN UNITS <b>METRIC</b>	THIRD ANGLE PROJECTION
		4 PLACES ± --- ± --- 3 PLACES ± --- ± --- 2 PLACES ± 0.13 ± --- 1 PLACE ± 0.25 ± --- ANGULAR ± 1°	mm INCH ± --- ± --- ± --- ± --- ± --- ± ---	DRAWN BY: JERWIN DATE: 2010/09/20 CHECKED BY: CHYKCHRSCHY DATE: 2010/09/20 APPROVED BY: RAHMOOD DATE: 2010/12/20	TITLE: QSFP CAGE ASSEMBLY W/ SPRING FINGERS	MATERIAL NO: SEE TABLE	DOCUMENT NO: SD-74750-0092
DRAFT WHERE APPLICABLE MUST REMAIN WITHIN DIMENSIONS		SIZE D		THIS DRAWING CONTAINS INFORMATION THAT IS PROPRIETARY TO MOLEX INCORPORATED AND SHOULD NOT BE USED WITHOUT WRITTEN PERMISSION			

