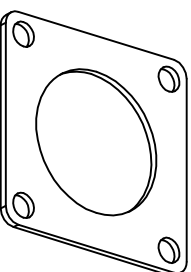
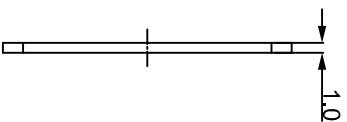
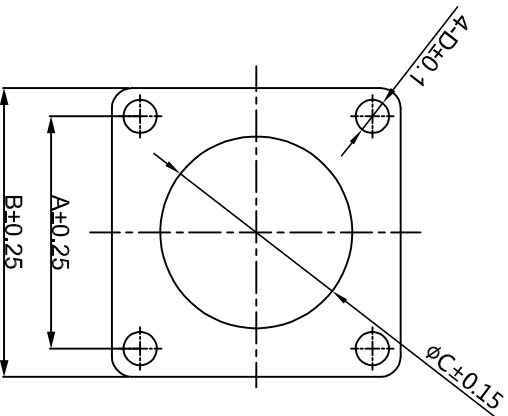


REVISIONS				
REV	ECO	DESCRIPTION	DATE	BY APPR
B1	-	RELEASED DRAWING	JAN-18-2014	ARROW TOMMY
B2	-	UPDATE DRAWING	APR-18-2017	FLAN TOMMY
B3	-	UPDATE DRAWING	May-19-17	Regan Tommy
B4	-	UPDATE TOLERANCE OF "D"	Jul/25/17	Tommy
B5	-	ADD PART NO. OF #8	May-8-2018	Flan Tommy



- NOTES:
1. MATERIAL : EPDM(BLACK). U194 V-0
  2. SEALING FOR WALL MOUNTING RECEPTACLES.
  3. SUITABLE FOR RTG-RT0-RT0W-RT50.

PART NO:	SHELL	A	B	C	D
RTFD088	08	15.3	20.6	12.0	3.2
RTFD108	10	18.3	23.8	15.1	3.3
RTFD128	12	20.6	26.8	19.1	3.3
RTFD148	14	23.0	28.6	22.2	3.3
RTFD168	16	24.6	31.0	25.4	3.3
RTFD188	18	27.0	33.3	28.6	3.3
RTFD208	20	29.4	36.5	31.8	4.3
RTFD228	22	31.8	39.4	35.1	3.3
RTFD248	24	34.9	42.5	38.1	4.3

QUANTITY	PART NUMBER	DESCRIPTION	ITEM

## MATERIALS LIST

UNLESS OTHERWISE SPECIFIED	SIGNATURES	DATE
1) All dimensions are in millimeters. 2) Tolerances are as follows: 1 Pt. DEC 20.30 Fractions ±1/64 3 Pt. DEC 20.08 Angles ±1°	DRAWN: Flan CHECKED: Tod ENGINEER: Tommy	10/9/2018 10/9/2018 10/9/2018
3) Note reference =	APPROVAL: Tommy	10/9/2018

PROCESS SPECIFICATIONS:	CUSTOMER:	SIZE	TYPE	DWG NO.
		B	C-	RTFDXB

REVISION	SCALE	SHEET	OF
B5	NONE	1	1

**Amphenol**  
Sine Systems - www.amphenol-sine.com  
44724 Morley Drive  
Clinton Township, MI 48036

**ECO-MATE GASKET**  
RT 360 SERIES