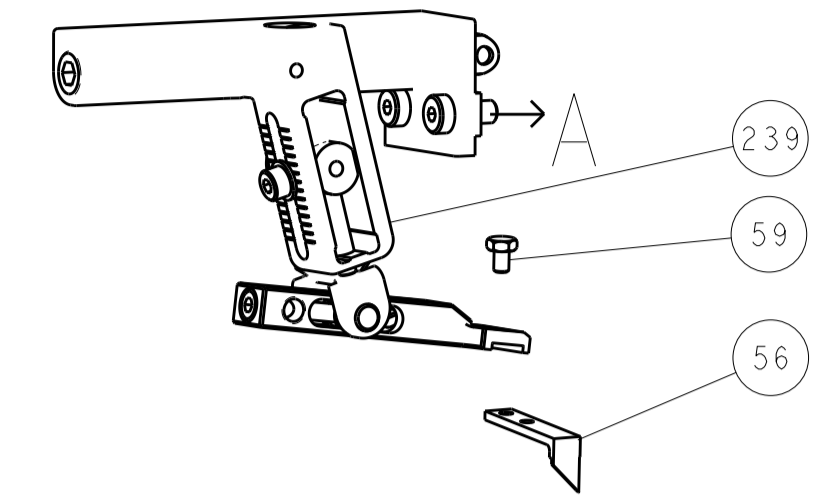
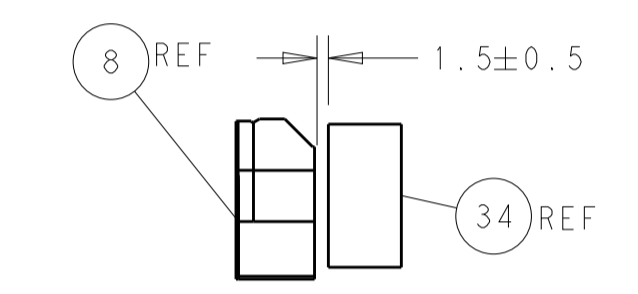
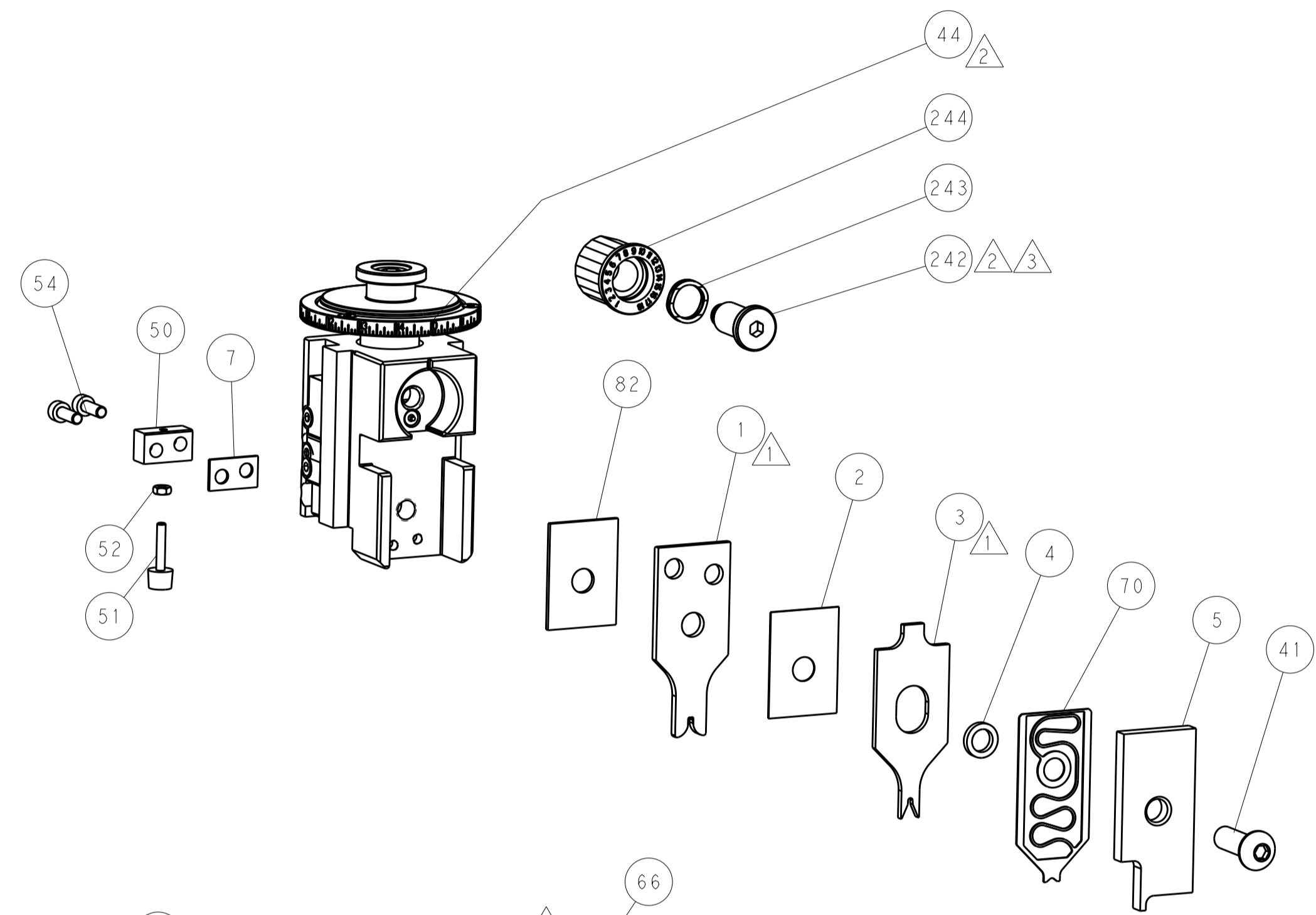
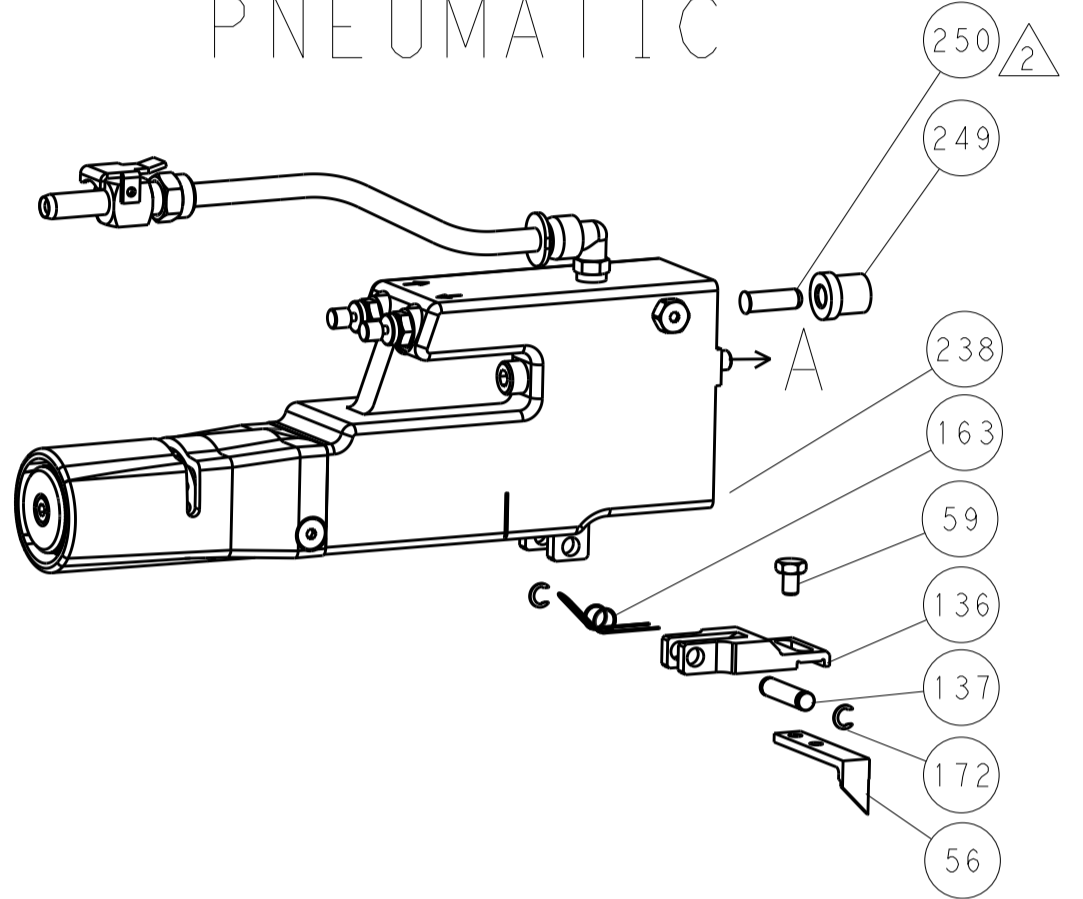


LOC		DIST		REVISIONS			
A	66	P	LTN	DESCRIPTION	DATE	DWN	APVD
		-		SEE SHEET 1	-	-	-

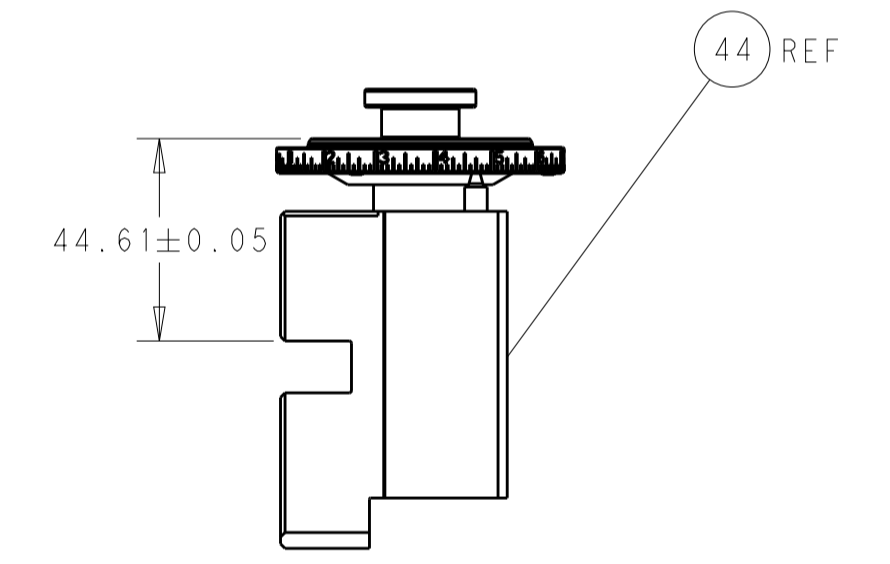
FEED TYPE MECHANICAL



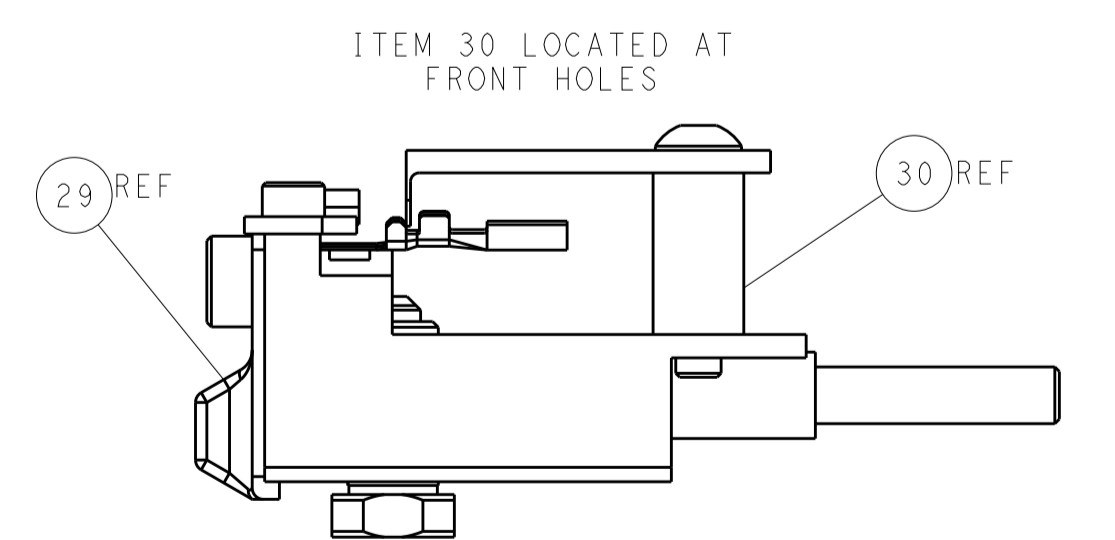
PNEUMATIC



TERMINAL SUPPORT LOCATION

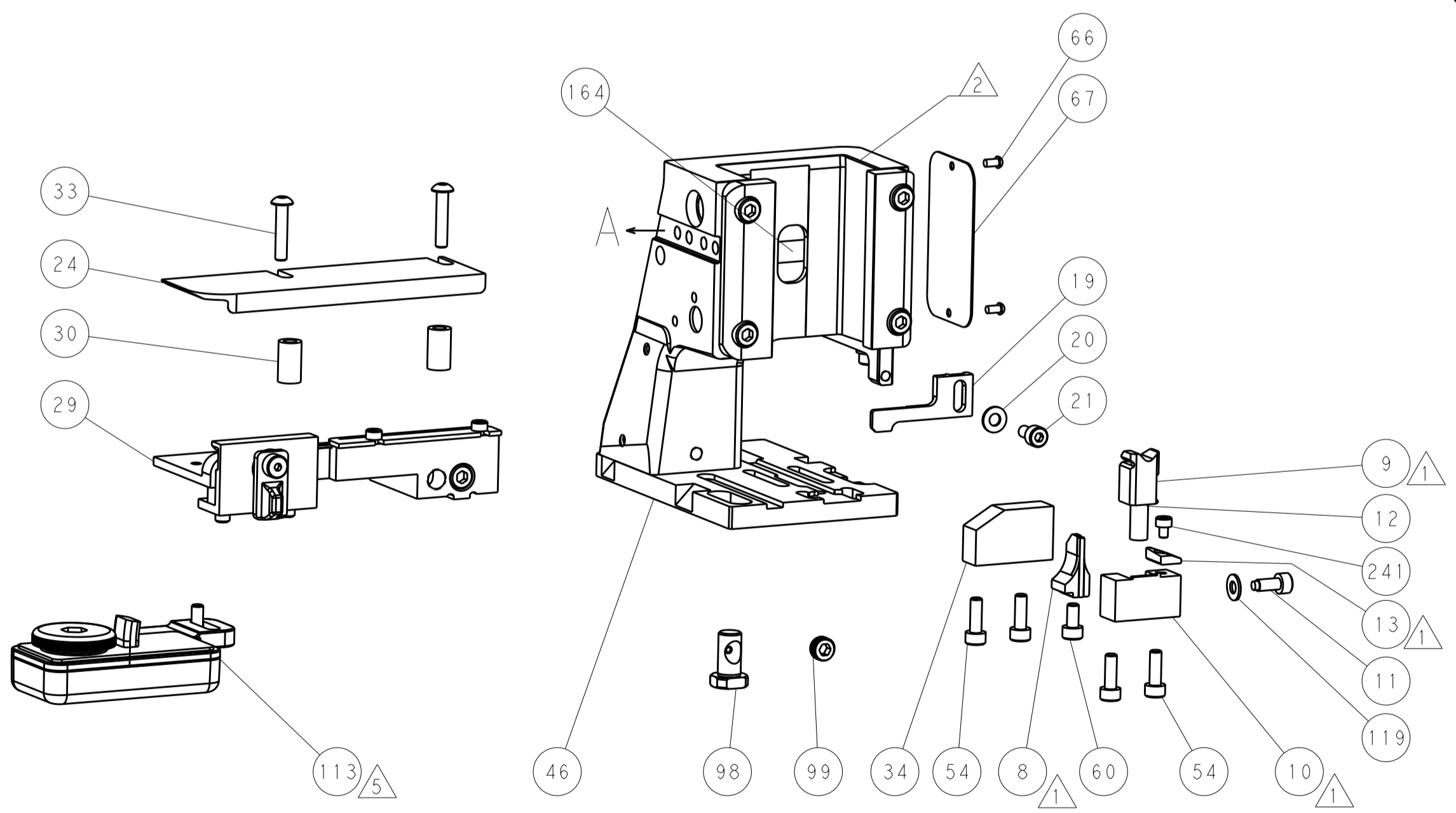
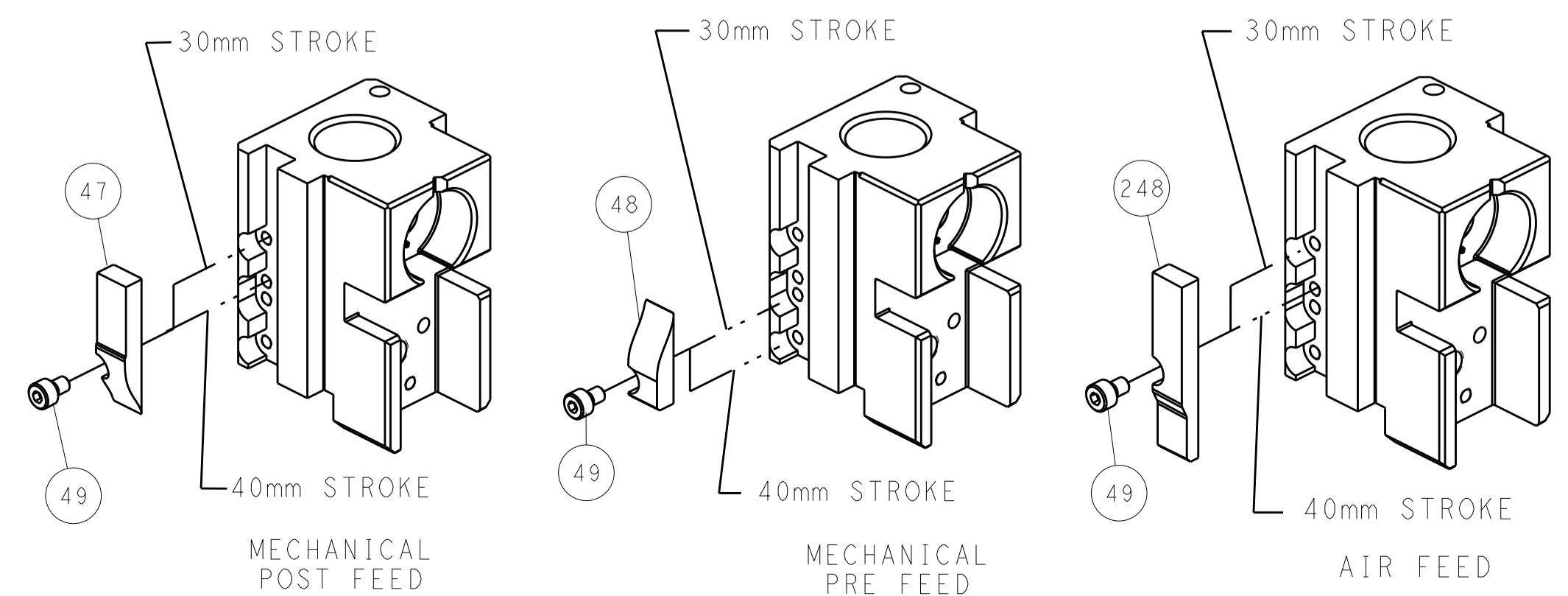


RAM SET-UP



FEED TRACK POSITION GUIDE BY INSULATION BARREL

CAM POSITIONS

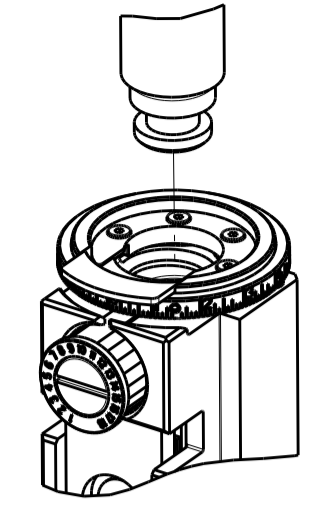


ATLANTIC VERSION
 Shown on sheets 1 of 4 & 2 of 4
 (Pacific version shown on sheets 3 of 4 & 4 of 4)

DIMENSIONS:		TOLERANCES UNLESS OTHERWISE SPECIFIED:		DWN X.ZHAO 06MAR2014		TE Connectivity	
mm	0 PLC ±	1 PLC ±	2 PLC ±	3 PLC ±	4 PLC ±	5 PLC ±	Harrisburg, PA 17105-3608
MATERIAL:		FINISH:		CHK L.ZHANG 06MAR2014		NAME	
				APVD T.ELBIN 06MAR2014		Ocean Side Feed Applicator	
				PRODUCT SPEC		SIZE CAGE CODE DRAWING NO	
				APPLICATION SPEC		A1 00779 C=2266229	
				WEIGHT		RESTRICTED TO	
				Customer Accessible Production Drawing		SCALE 1:2 SHEET 2 OF 4 REV C1	

PART NUMBER	REVISION	DESCRIPTION	FEED TYPE
2-2266229-1	C	FINE CRIMP HEIGHT ADJUST	MECHANICAL
2-2266229-2	C	FINE CRIMP HEIGHT ADJUST	PNEUMATIC
7-2266229-7	B	CRIMP TOOLING KIT	-

PACIFIC VERSION TERMINATOR
 INTERFACE ADAPTER



APPLICATOR DATA

CRIMP	SIZE	TYPE
WIRE	1.73 mm [.068]	F
INSUL	1.83 mm [.072]	O

APPLICATOR INSTRUCTIONS
 408-35042

TERMINAL DATA: MOLEX TERMINAL MOLEX CRIMP SPECIFICATION

TERMINAL NAME: MX 64 SAE RECEPTACLE TERMINAL

WIRE STRIP LENGTH	INSULATION DIAMETER RANGE
3.80-4.20 mm [.150-.165 IN]	Ø1.70-2.06 mm [.067-.081 IN]

TERMINAL APPLICATION SPECIFICATION MOLEX SPEC Rev -

TERMINALS APPLIED

TE TERMINAL	MOLEX TERMINAL	TE TERMINAL	MOLEX TERMINAL
1572723-1	33467-0006	1572723-3	34736-1002
1572723-2	33468-0004		

WIRE SIZE	CRIMP HEIGHT mm [INCH]	CRIMP HEIGHT REFERENCE SETTING
18 AWG	1.15+/-0.05 [.045+/-0.002]	6.3
0.75mm2	1.10+/-0.05 [.043+/-0.002]	6.8
20 AWG	1.10+/-0.05 [.043+/-0.002]	6.9

- 1 RECOMMENDED SPARE PARTS
- 2 REFER TO SUPPLIED INSTRUCTION SHEET FOR CLEANING, LUBRICATION AND STORAGE OF APPLICATOR.
- 3 APPLY PART NUMBER 2-23419-6 LOCTITE TO THREADS OF ITEM 242.
- 4 CRIMP HEIGHT REFERENCE SETTING WAS THE SETTING USED WHEN THE APPLICATOR WAS QUALIFIED AT THE FACTORY. ADJUSTMENT MAY BE NECESSARY WHEN RUNNING APPLICATOR IN THE FIELD.
- 5 TERMINAL LUBRICANT IS RECOMMENDED.
- 6. UNLESS SPECIFIED OTHERWISE TORQUE VALUES SHALL BE USED PER DOCUMENT, 101-35000.

***WARNING**
 ON INSTALLATION, SET WIRE DISC TO CRIMP HEIGHT REFERENCE SETTING FOR LARGEST WIRE SIZE. CRIMP HEIGHT REFERENCE SETTINGS GREATER THAN THE VALUE SHOWN MAY CAUSE DAMAGE TO THE CRIMP TOOLING, REFER TO THE INSTRUCTION SHEET FOR PROPER SETUP AND ADJUSTMENTS.

PACIFIC VERSION
 Shown on sheets 3 of 4 & 4 of 4
 (Atlantic version shown on sheets 1 of 4 & 2 of 4)

LOC	DIST	REV	DATE	BY	APPD
A	66				

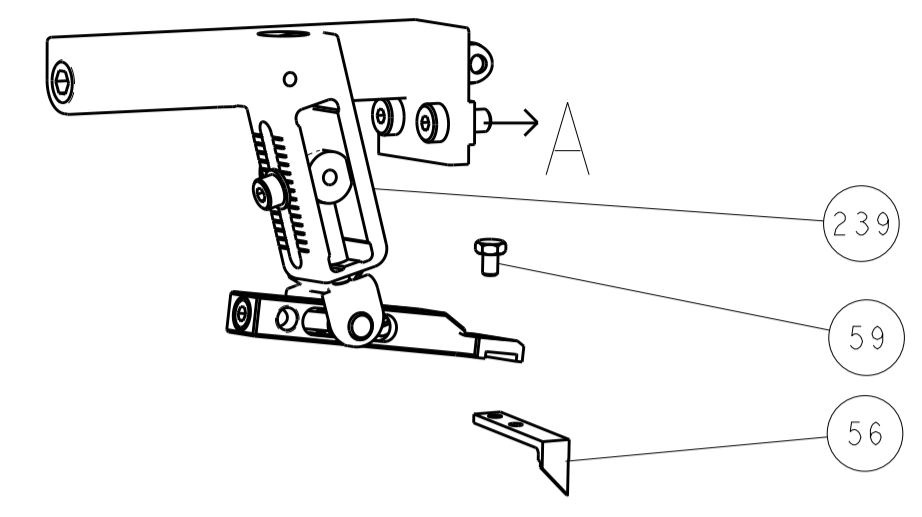
REV	DATE	BY	APPD	DESCRIPTION	ITEM NO
-	-	-	-	SEE SHEET 1	-
-	1	-	-	2119640-1 PUSH ROD, AIR FEED	250
-	1	-	-	1803259-1 BUSHING, FLANGED	249
-	1	1	-	2119082-5 CAM, SNAIL, INSULATION ADJUSTMENT	244
-	1	1	-	2079764-1 WASHER, WAVE SPRING, CREST-TO-CREST	243
-	1	1	-	2119083-1 RETAINER, INSULATION DIAL	242
-	1	1	-	7-18023-7 SCR, SKT HD CAP M3 X 4.0	241
-	-	1	-	2119580-1 MECHANICAL FEED ASSEMBLY	239
-	1	-	-	2063440-1 AIR FEED MODULE	238
-	2	-	-	21045-3 RING, RETAIN, EXTERN, 3/16 CRESCENT	172
-	REF	REF	-	994970-2 COUNTER, MAGNETIC	164
-	1	-	-	240638-1 SPRING, FEED FINGER	163
-	1	-	-	2119641-2 FEED CAM, AIR FEED	151
-	1	1	-	2168083-8 SCR, SKT HD CAP, RoHS, M4 X 16	144
-	4	4	-	2168083-9 SCR, SKT HD CAP, RoHS, M4 X 20	143
-	-	1	-	2119653-2 FEED CAM, POST FEED	142
-	1	1	-	1-1803583-0 APPLICATOR BASIC ASSEMBLY, SF	141
-	1	1	-	1803516-1 RAM ASSEMBLY, SF PACIFIC	140
-	1	-	-	3-23627-7 PIN, RETAIN, GRVD, 3/16 X .854	137
-	1	-	-	2119799-1 HOLDER, FEED FINGER, AF	136
-	1	1	-	1-18028-2 WASHER, FLAT, REG M4	119
-	1	1	-	2119955-1 ASSY, LUBRICATOR, SIDE FEED	113
-	1	1	-	2844908-1 SCREW, LOCKING	99
-	1	1	-	2844907-1 POST, LOCKING	98
-	1	1	-	1-455888-2 SPACER, CRIMPER	82
-	1	1	-	1803607-1 DOCUMENTATION PACKAGE	71
-	1	1	-	2119791-5 DEPRESSOR, WIRE	70
-	1	1	-	2119740-1 TAG, IDENTIFICATION	67
-	2	2	-	2168078-1 SCREW, DRIVE, RH, RoHS, 2 x .188	66
-	1	1	-	5-18022-5 SCR, HEX HD CAP, M4 X 6.0	59
-	1	1	-	1338685-1 PAWL, FEED	56
-	2	2	-	2168083-3 SCR, SKT HD CAP, RoHS, M4 X 12.0	53
-	1	1	-	5018030-1 NUT, HEX, REG, RoHS, M3	52
-	1	1	-	811242-5 BUMPER, HOLD DOWN	51
-	1	1	-	690753-2 SPACER, TONKER	50
-	1	2	-	18023-9 SCR, SKT HD CAP M4 X 6.0	49
-	-	1	-	2119652-1 FEED CAM, PRE FEED	48
-	1	1	-	1803602-1 SCR, BHSC, RoHS (M8 X 25)	41
-	1	1	-	3-1752356-3 SUPPORT, TERMINAL	34
-	2	2	-	2079383-5 SCR, BHSC, RoHS (M4 X 20)	33
-	2	2	-	2-2844962-6 SPACER, CYLINDRICAL, STRIP GUIDE	30
-	1	1	-	2844992-1 ASSEMBLY, STRIP GUIDE	29
-	1	1	-	1320928-2 STRIP GUIDE	24
-	1	1	-	2168083-2 SCR, SKT HD CAP, RoHS, M4 X 8.0	21
-	1	1	-	1-18028-2 WASHER, FLAT, REG M4	20
-	1	1	-	2119533-1 STRIPPER, SIDE FEED	19
-	1	1	-	2119806-1 INSERT, SHEAR	13
-	1	1	-	3-22280-3 SPRING, COMPRESSION	12
-	1	1	-	1-356885-5 STOP, SHEAR	11
-	1	1	-	2119805-1 SHEAR HOLDER, FRONT	10
-	1	1	-	1803095-2 FLOATING SHEAR, FRONT	9
1	1	1	-	1803153-4 ANVIL, COMBINATION	8
-	1	1	-	5-240641-9 SPACER	7
-	-	-	-	-	6
-	1	1	-	1-2119757-2 DEPRESSOR, SHEAR	5
-	1	1	-	1-238011-0 BLOCK, CRIMPER SPACER	4
1	1	1	-	2-1803453-5 CRIMPER, INSULATION O	3
-	1	1	-	455888-4 SPACER, CRIMPER	2
1	1	1	-	1633463-6 CRIMPER, WIRE SPECIAL	1

ITEM NO	PART NO	DESCRIPTION
-77	-22	-21

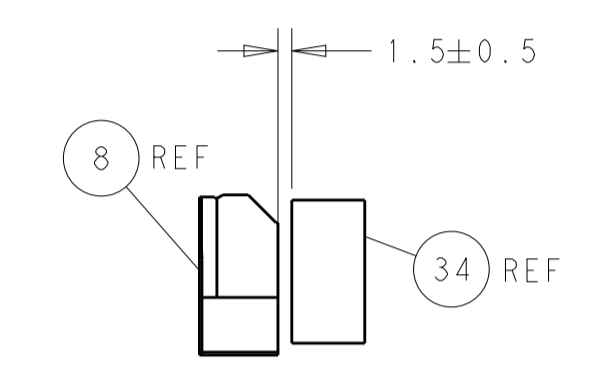
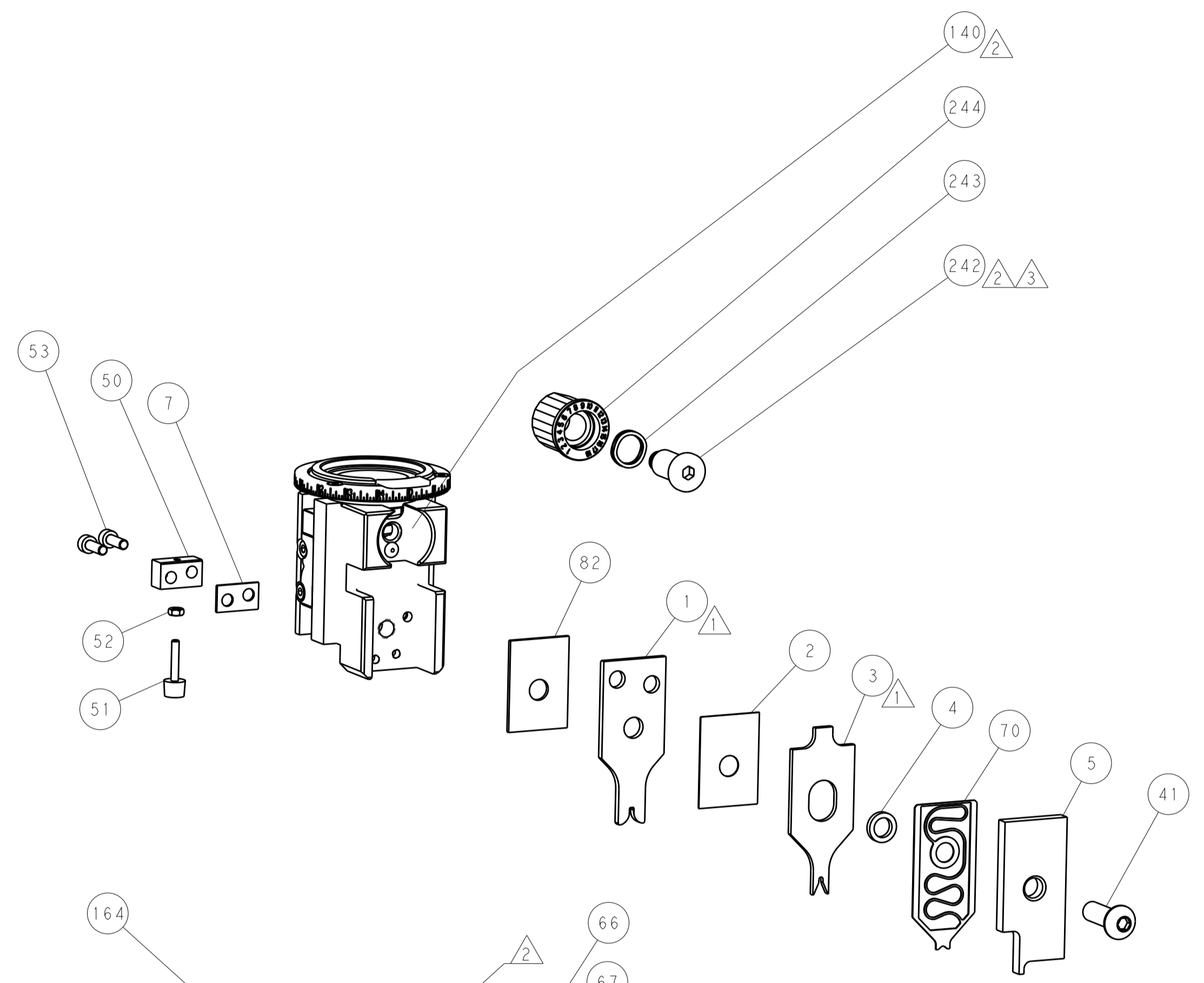
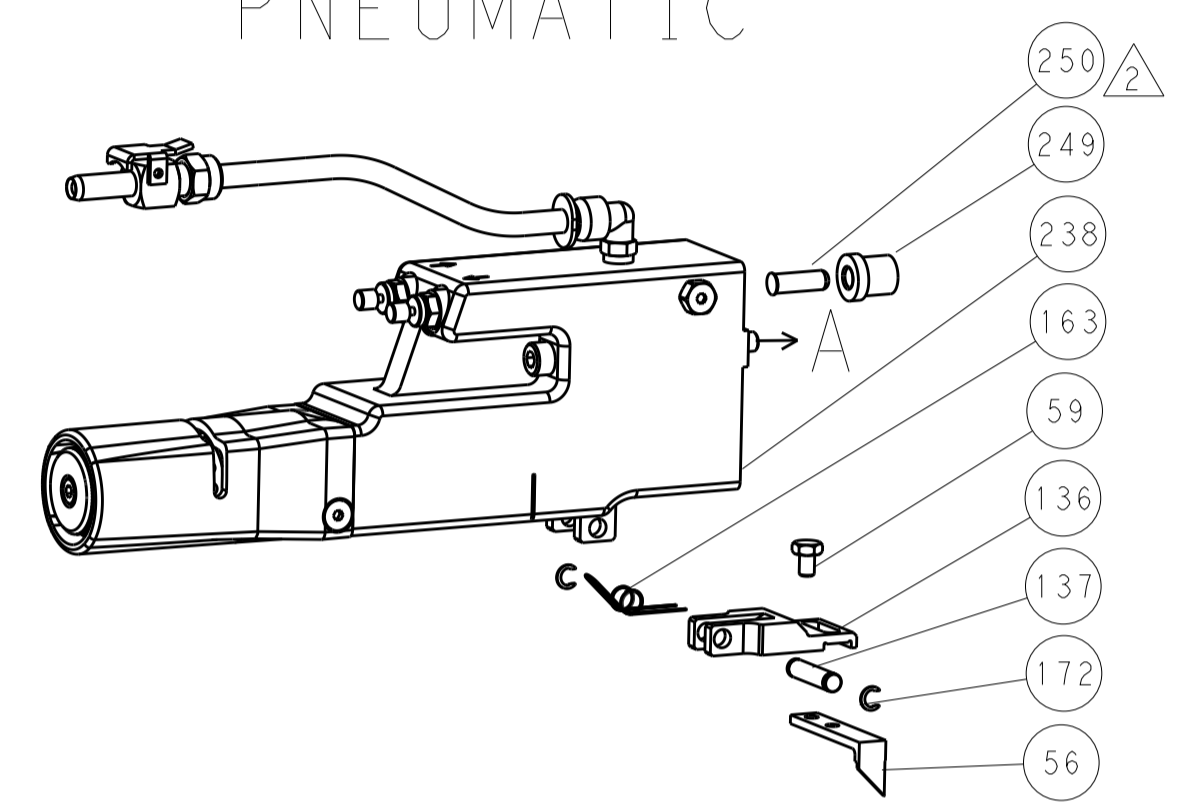
DATE: 06MAR2014	BY: X.ZHAO	CHK: L.ZHANG	APPD: T.FLRIN
PRODUCT SPEC	APPLICATION SPEC	SIZE: A1	CAGE CODE: 00779
SCALE: 1:2	SHEET: 3 OF 4	REV: C1	Customer Accessible Production Drawing

LOC		DIST		REVISIONS			
A		66		REV	DATE	BY	APPV
-				SEE SHEET 1	-	-	-

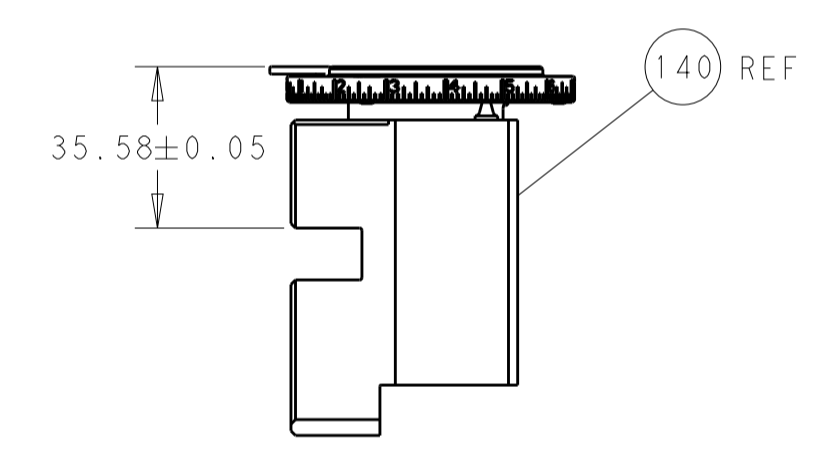
FEED TYPE MECHANICAL



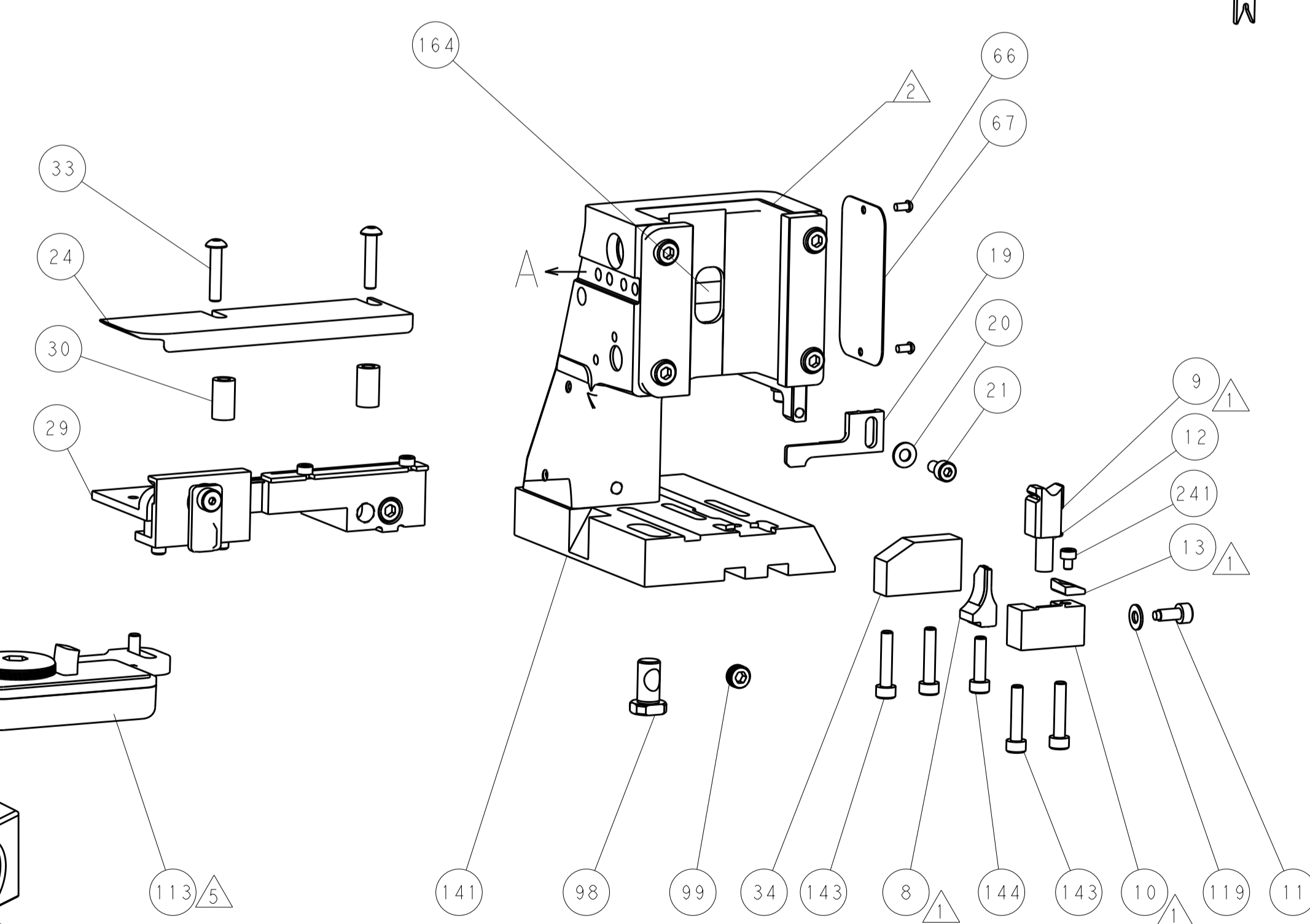
PNEUMATIC



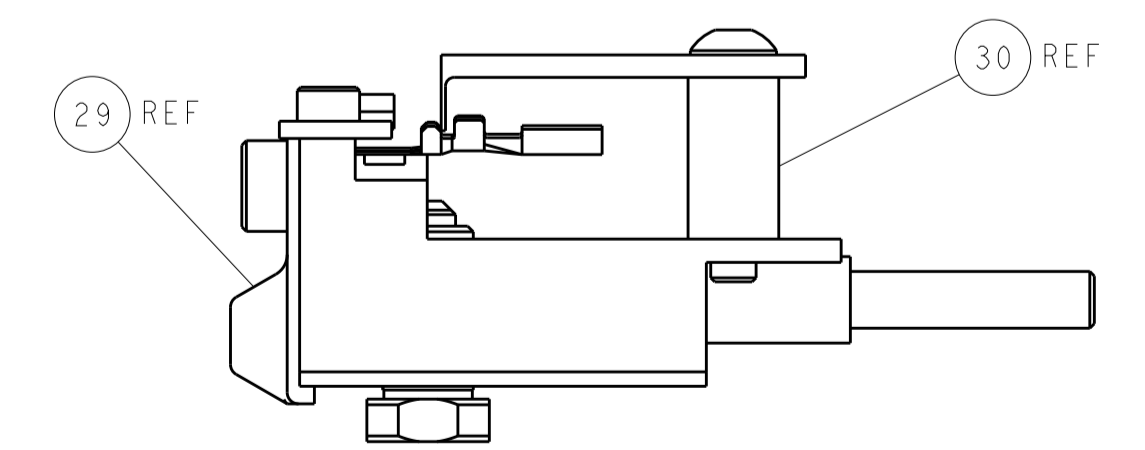
TERMINAL SUPPORT LOCATION



RAM SET-UP

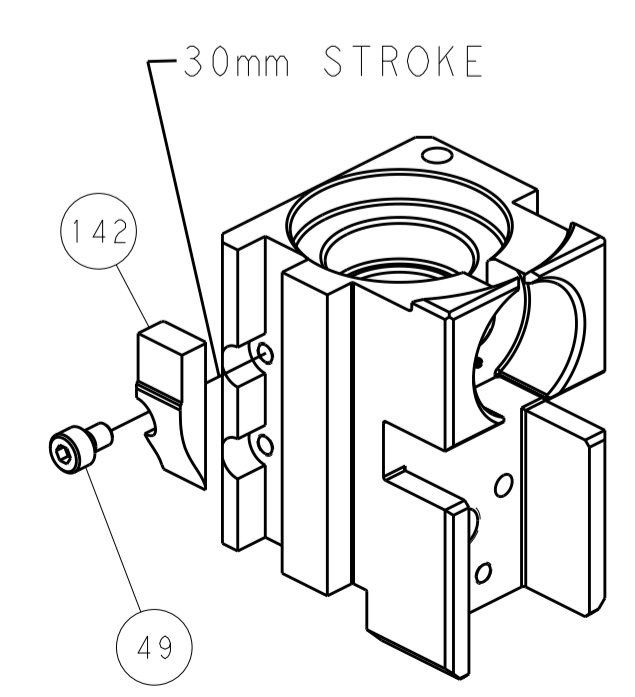


ITEM 30 LOCATED AT FRONT HOLES

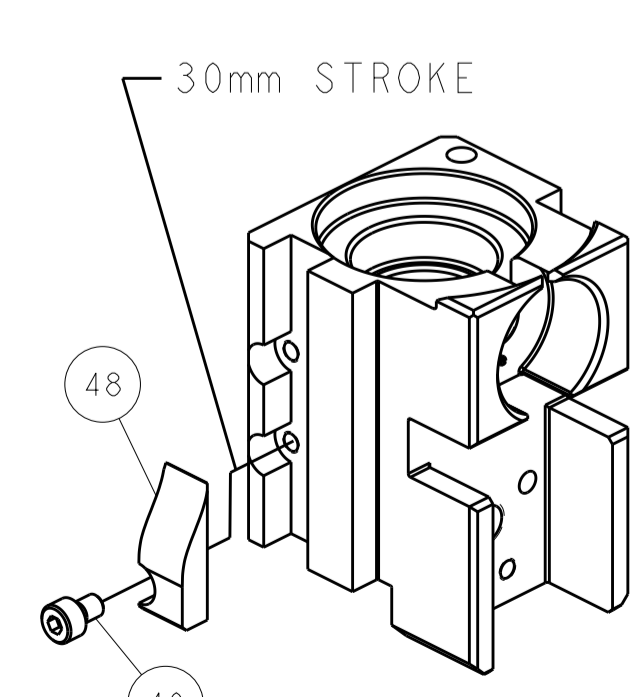


FEED TRACK POSITION GUIDE BY INSULATION BARREL

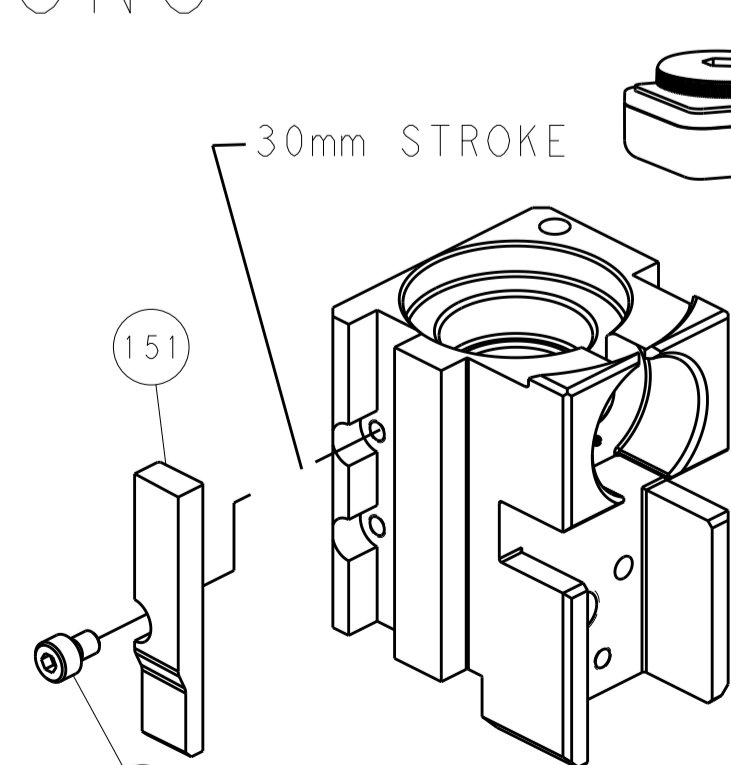
CAM POSITIONS



MECHANICAL POST FEED



MECHANICAL PRE FEED



AIR FEED

PACIFIC VERSION
 Shown on sheets 3 of 4 & 4 of 4
 (Atlantic version shown on sheets 1 of 4 & 2 of 4)

DIMENSIONS:		TOLERANCES UNLESS OTHERWISE SPECIFIED:		DWG: X.ZHAO 06MAR2014		TE Connectivity	
mm	0 PLC ±	1 PLC ±	2 PLC ±	3 PLC ±	4 PLC ±	5 PLC ±	Harrisburg, PA 17105-3608
MATERIAL:		FINISH:		CHK: L.ZHANG 06MAR2014		NAME: Ocean Side Feed Applicator	
-		-		APVD: T.FELBIN 06MAR2014		SIZE: CAGE CODE: DRAWING NO: RESTRICTED TO	
-		-		PRODUCT SPEC:		A1 00779 C=2266229	
-		-		APPLICATION SPEC:		Customer Accessible Production Drawing	
-		-		WEIGHT:		SCALE: 1:2 SHEET 4 OF 4 REV: C1	