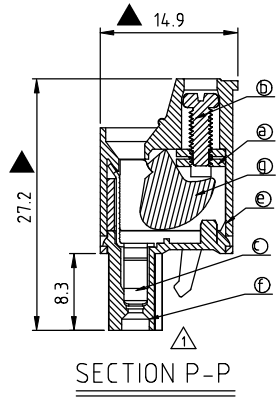
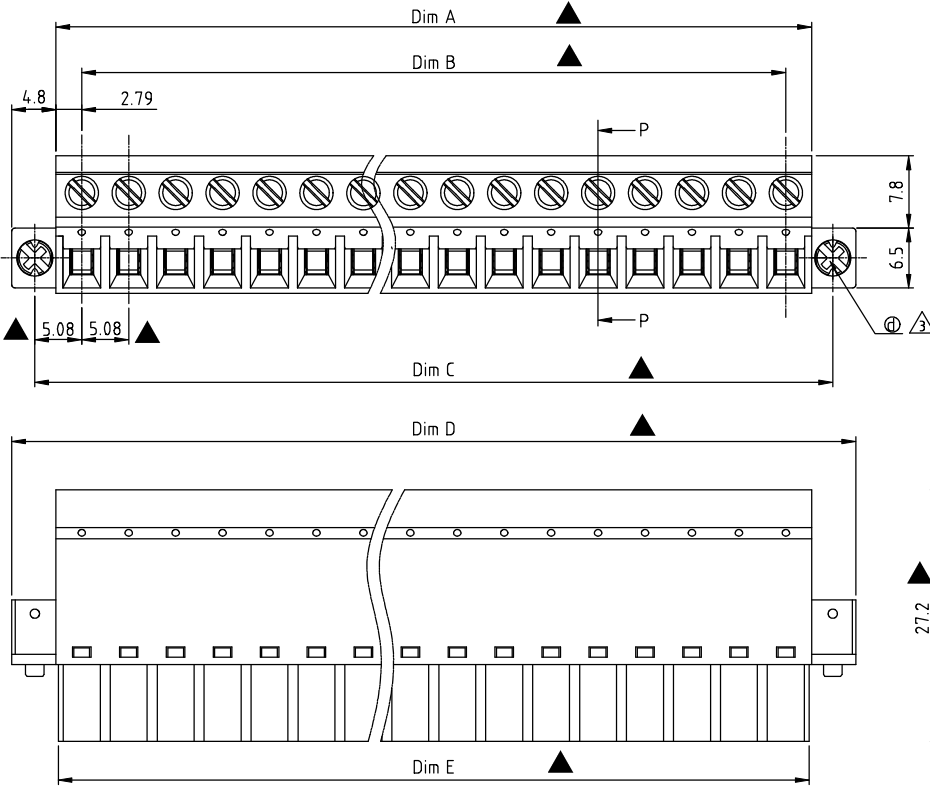


RoHS Compliant

REV	SIGN	DATE	DESCRIPTION	APPROVER
B	△	11/08'05	Wire guard structure Modified	Tony
C	△	02/07'06	Part No. changed	Tony
D	△	12/02'08	Flange screw changed from "-" to "+/-"	Tony
E	△	03/23'10	Add the 2p mark	Jacke
F	△	05/13'14	update the drawing	Chen Bo
G	△	2019.06.20	Add the RoHS compliant&Amphenol Logo.	PansLee
	△	2019.06.20	Add the VDE Electrical parameters	PansLee
	△	2019.06.20	Add the Wire range and update critical dimension	PansLee
	△	2019.06.20	The Wire strip length is change from 6-7mm to 8-9mm	PansLee
	△	2019.06.20	Update the drawing	PansLee

THIS IS CAD DRAWING, DO NOT REVISE MANUALLY!!!



- Material
- Item ① Clamp: Steel zinc plated.
 - Item ② Terminal screw: Steel Zinc plating "-" slot type
 - Item ③ Female contact: PhBz, Tin plated
 - △ Item ④ With flange screw: Steel zinc plated M2.5 "+/-" slot type
 - Item ⑤ Terminal (Up body): Thermoplastic (UL94V-0)
 - Item ⑥ Terminal (Down body): Thermoplastic (UL94V-0)
 - Item ⑦ Clampage: Steel Zinc plated

- Electrical cULus / VDE △
- Voltage rating: 300VAC / 300VAC
 - Current rating: 20A / 20A
 - △ ● Wire range: 0.34-2.5mm²
 - Solid wire(AWG): 12-22
 - Stranded wire(AWG): 12-22
 - Torque: 3.5Lb-In / 0.4N.m
 - Screw: M2.5
 - △ ● Wire strip length: 8-9mm
 - Withstanding Voltage: 1.6KV / 2.5KV
 - Operating temperature: -40°C to +115°C
 - Safety approval: cULus VDE △
 - △ ● Critical dimension: ▲

Dimension

Dim A	N × 5.08+0.50
Dim B	(N-1) × 5.08
Dim C	(N-1) × 5.08+10.16
Dim D	N × 5.08+10.1
Dim E	N × 5.08

VM xx 5 5 x 3 xxxx G

- Solid Block
02 2 POLES
03 3 POLES
...
24 24 POLES
- 0 Black (RAL9005)
2 Red (RAL3001/D)
3 Orange(RAL2011/P)
4 Yellow(RAL1018/A)
5 Green(RAL6018/T)
6 Blue (RAL5015/A)
8 Grey(RAL7035/D)
9 White(RAL1102)
C Green(RAL6018/U)
- G RoHS compliant (lead<4%)
In copper Alloy
- 0000:"@ "Logo (Standard)
000A:"ANYTEK"Logo
0091:"ANYTEK"Logo
Any special item by customer request, please contact sales department.

N=Number of poles

POLES	TOLERANCE
2P - 6P	-0.20/+0.20
7P - 12P	-0.25/+0.25
13P - 18P	-0.30/+0.30
19P - 24P	-0.40/+0.40

		CUSTOMER COPY <small>ALL RIGHTS RESERVED. REPRODUCTION OR ISSUE TO THIRD PARTIES IN ANY FORM WHATSOEVER IS NOT PERMITTED WITHOUT WRITTEN AUTHORITY FROM THE PROPRIETOR. PROPERTY OF ANYTEK TECHNOLOGY CO., LTD</small>	
PART NO.	VMxx55x3xxxxG	DWG NO.	8VM0301
APPROVED	CHECKED	DESIGNED	DRAWN
		PansLee 2019.06.20	PansLee 2019.06.20
SHEET: 01/01		Tolerance	
		X. ±0.50 X.X ±0.30 X.XX ±0.10 X° ±1°	
		UNIT: mm SCALE: NONE REV.: G	