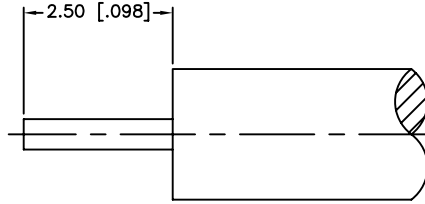
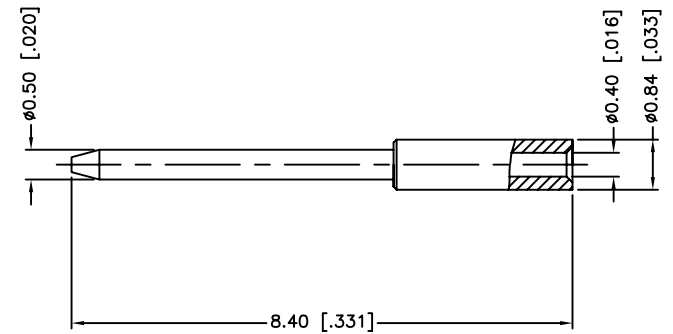
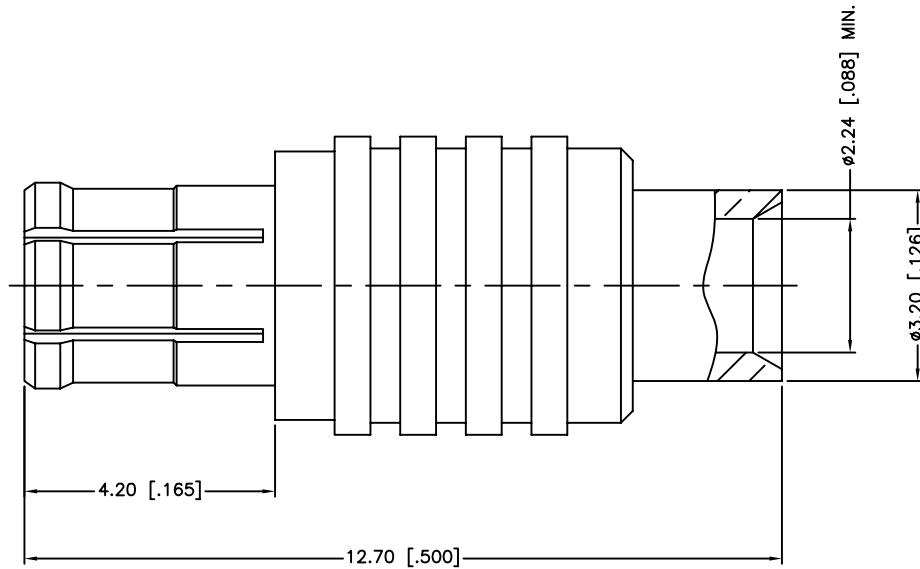


REV.	DATE	ECR NO.	DESCRIPTION
A	01/30/04	XXXXXX	UPDATE DRAWING FORMAT
B	05/03/11	2171	CHANGE THE PART NO. TO 252107-75



RECOMMENDED
CABLE STRIPPING DIM'S



1. CONTACT PIN TO SOLDER

3	CONTACT PIN	BRASS	GOLD	1
2	INSULATOR	PTFE	NATURAL	1
1	BODY	BER. COPPER	GOLD	1
DESCRIPTION	MATERIAL	FINISH	QTY	

UNLESS OTHERWISE SPECIFIED DIMENSIONS ARE IN MILLIMETERS. DIMENSIONS IN [] ARE IN INCHES AND FOR CUSTOMER REFERENCE ONLY.		APPROVALS	DATE
UNLESS OTHERWISE SPECIFIED TOLERANCES FOR MILLIMETERS ARE: 0.5 - 8mm \pm 0.20mm 8 - 30mm \pm 0.40mm 30 - 120mm \pm 0.50mm		DRAWN M.ZHANG	05/03/11
UNLESS OTHERWISE SPECIFIED TOLERANCES FOR INCHES ARE: .020 - .315 = \pm 0.007" .315 - 1.180 = \pm 0.015" 1.180 - 4.724 = \pm 0.020"		CHECKED	
DO NOT SCALE DRAWING		ISSUED	
		SHEET 1 OF 1	
		CAD FILE C:/CONNEX/252107-75.DWG	

Amphenol Connex			
PART DESCRIPTION MCX DIRECT SOLDER PLUG (FOR .085", .086" CABLE)			
PART NO.		252107-75	
DWG. NO.	252107-75.DWG	REV.	B
SIZE	A	SCALE	NA