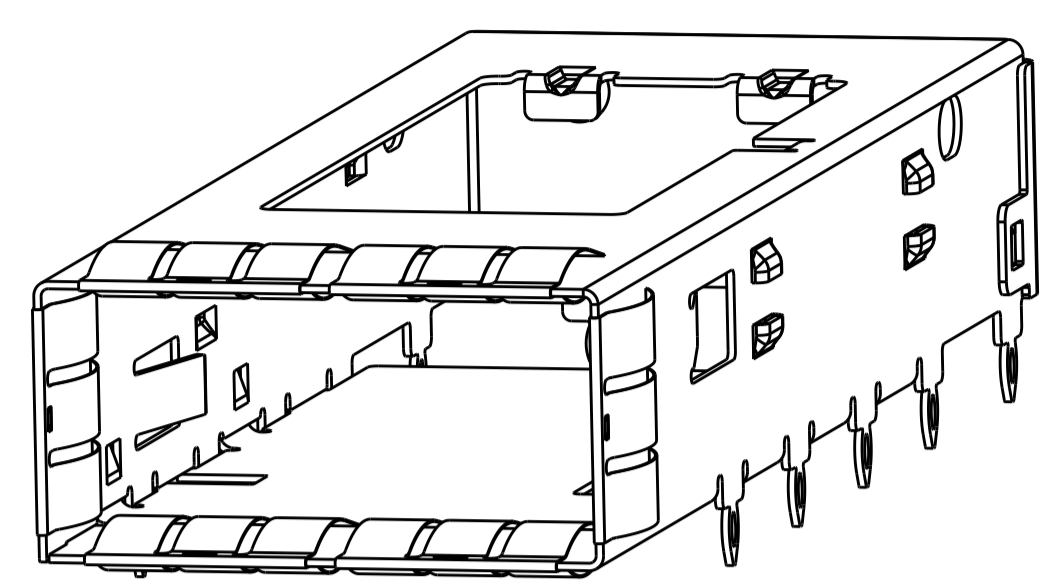
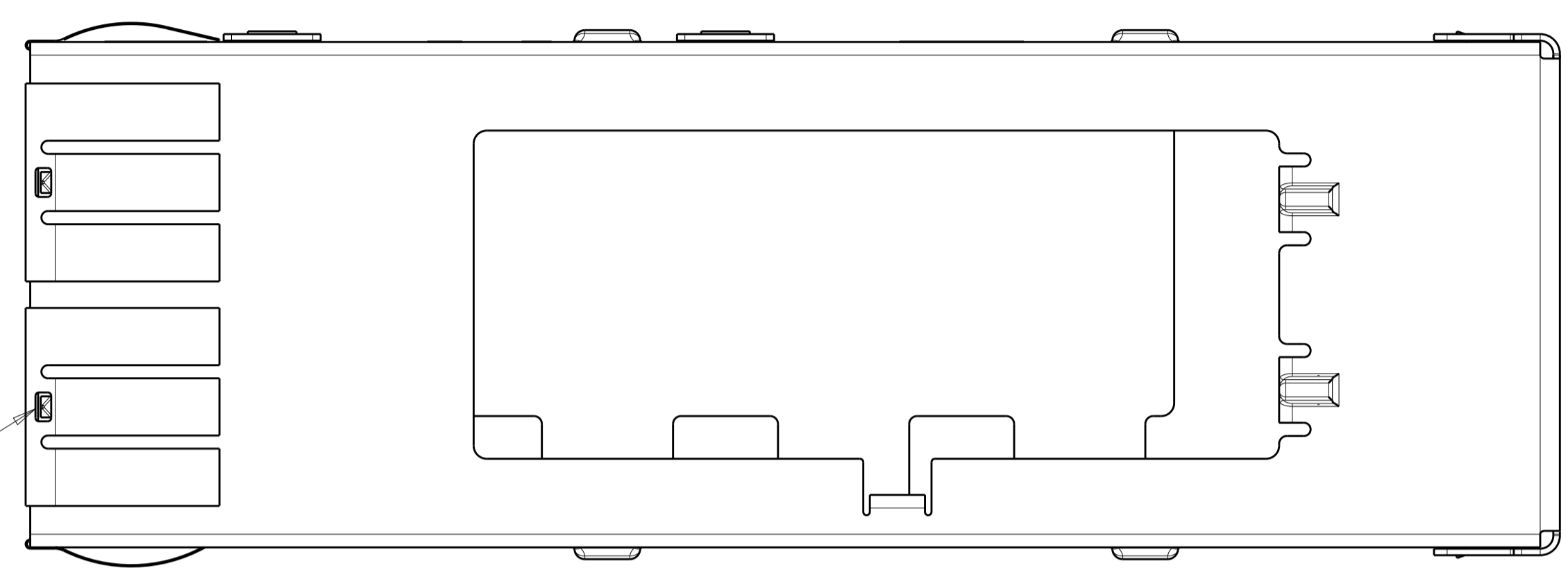


| LOC | DIST | REVISIONS |     |                           |           |     |       |
|-----|------|-----------|-----|---------------------------|-----------|-----|-------|
|     |      | P         | LTN | DESCRIPTION               | DATE      | DMN | APVD  |
| GP  | 00   | B1        |     | REVISED PER ECO-11-004835 | 11MAR2011 | RK  | HMR   |
|     |      | C         |     | REVISED PER ECO-11-016845 | 18AUG2011 | KS  | MO, W |
|     |      | D         |     | REVISED PER ECO-15-005721 | 4AUG2015  | RG  | SH    |

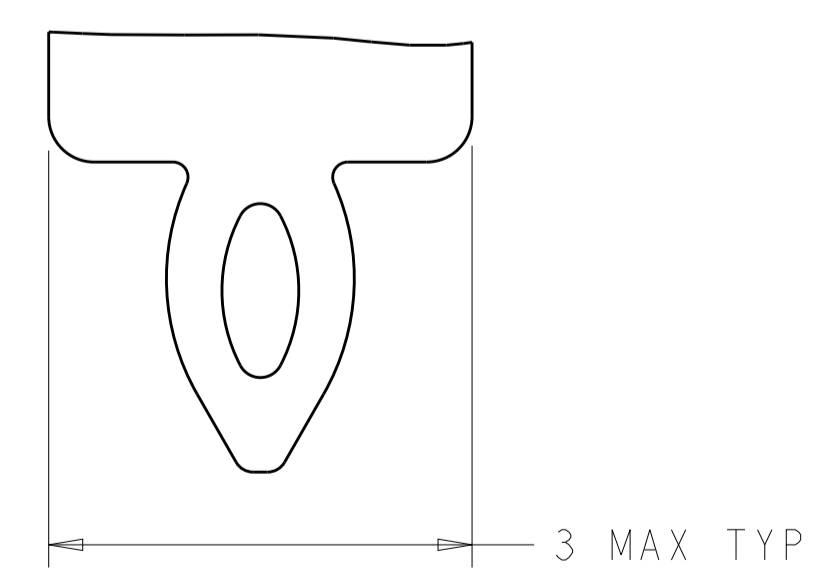
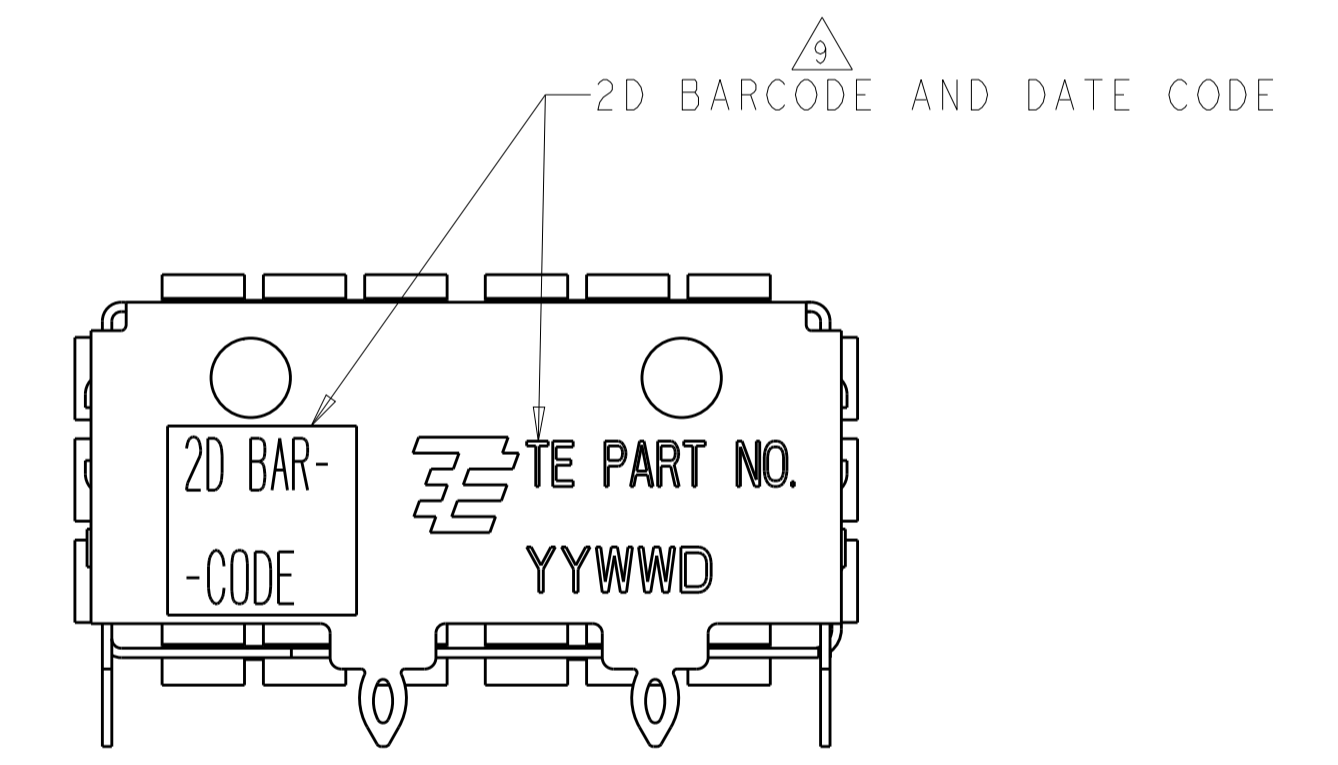
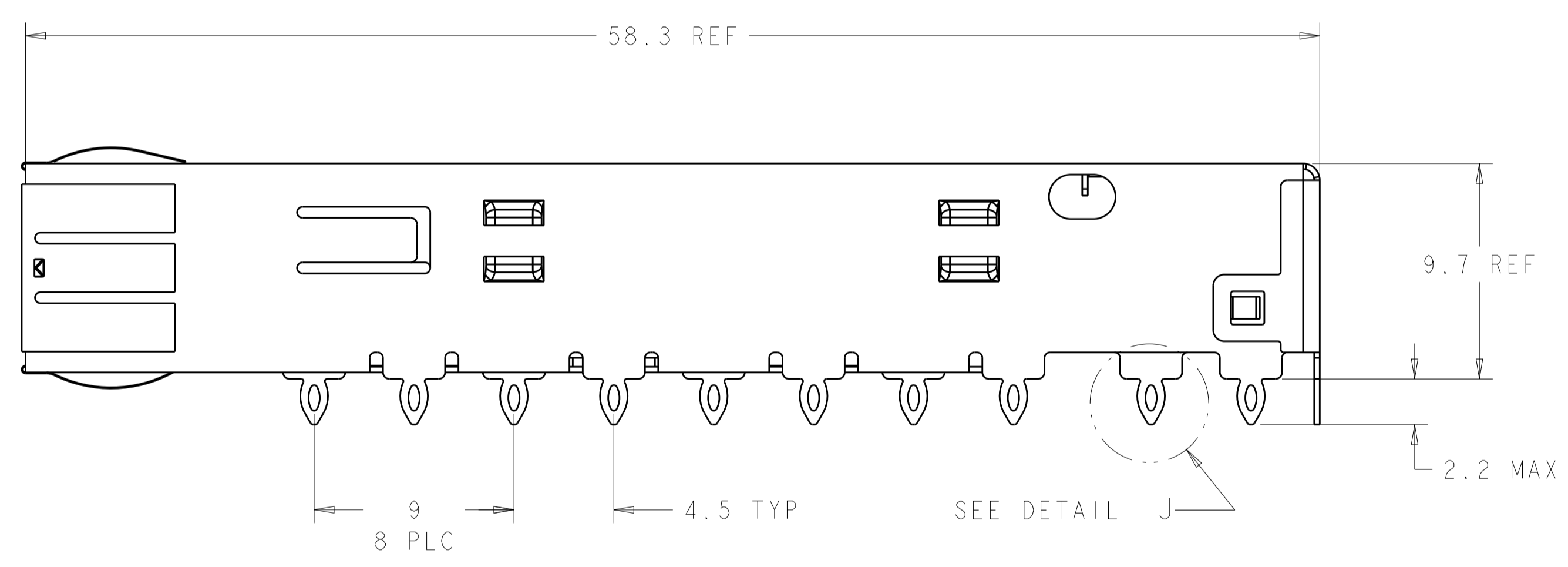
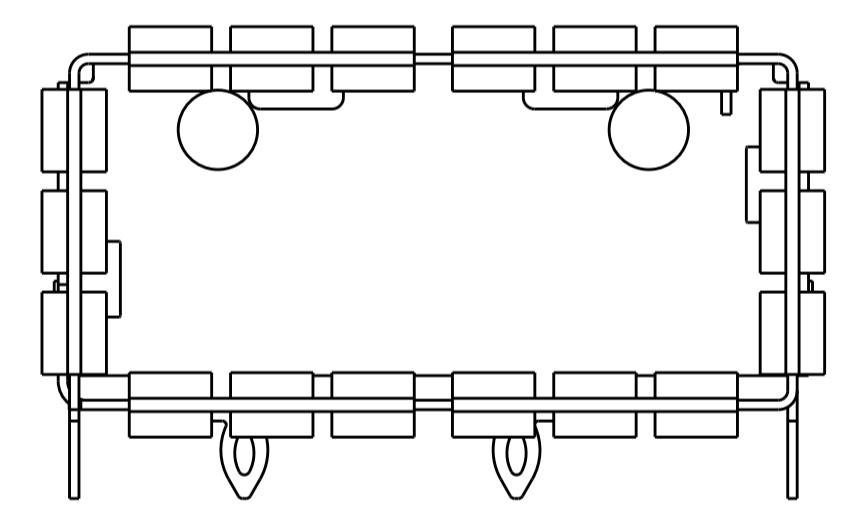


ISOMETRIC VIEW  
SCALE 4:1

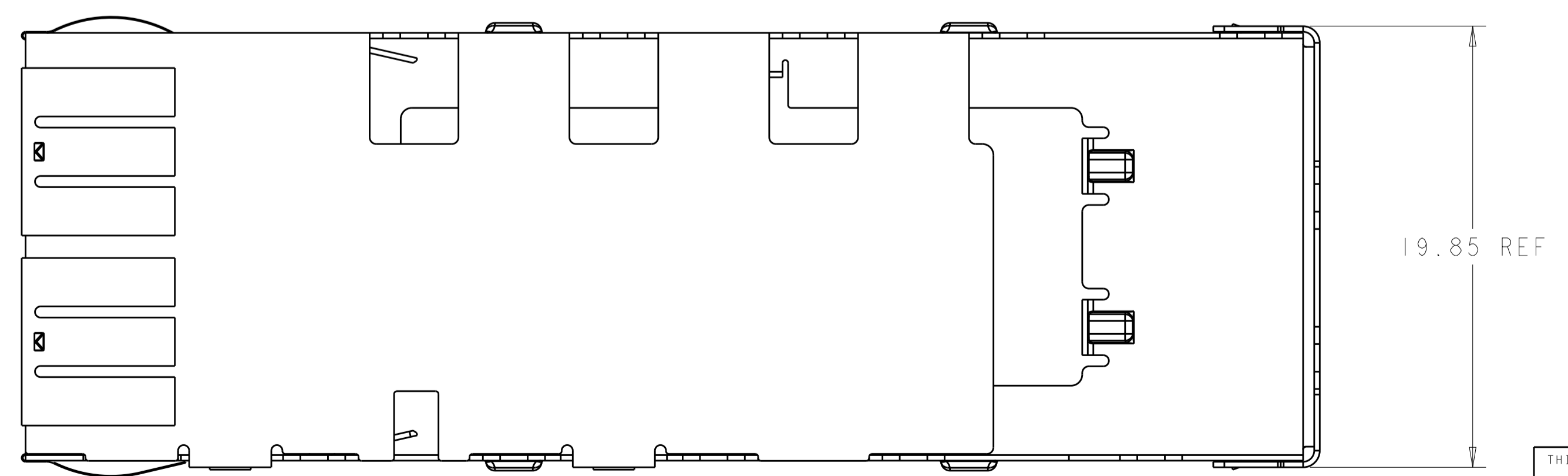
Sn42Bi58 SOLDER  
6 PLACES



- ⚠ CAGE MATERIAL: 0.25 THICK NICKEL SILVER.  
SPRING MATERIAL: COPPER ALLOY
- ⚠ MINIMUM PITCH DIMENSION.
- 3. MATES WITH QSFP MSA COMPATIBLE TRANSCEIVER.
- ⚠ REFERENCE APPLICATION SPEC 114-13217 FOR RECOMMENDED DRILL HOLE DIAMETER AND PLATING THICKNESS.
- ⚠ DATUM AND BASIC DIMENSIONS ESTABLISHED BY CUSTOMERS.
- 6. MINIMUM PC BOARD THICKNESS:  
SINGLES SIDED: 1.45  
DOUBLE SIDED: 2.2.
- ⚠ DATUM -A- IS TOP SURFACE OF THE HOST BOARD.
- ⚠ SURFACE TRACES PERMITTED WITHIN THIS AREA EXCEPT WHERE CAGE STANDOFFS, SHOWN IN DETAIL J, CONTACT PC BOARD.
- ⚠ 2D BARCODE AND DATE CODE (YYWW) MARKED APPROXIMATELY AS SHOWN.
- ⚠ SPRING FINISH: 0.8µm MIN TIN OVER 0.8µm MIN NICKEL, NON-PLATED EDGES PERMISSIBLE.
- 11. PRODUCT HAS NOT COMPLETED QUALIFICATION TESTING.



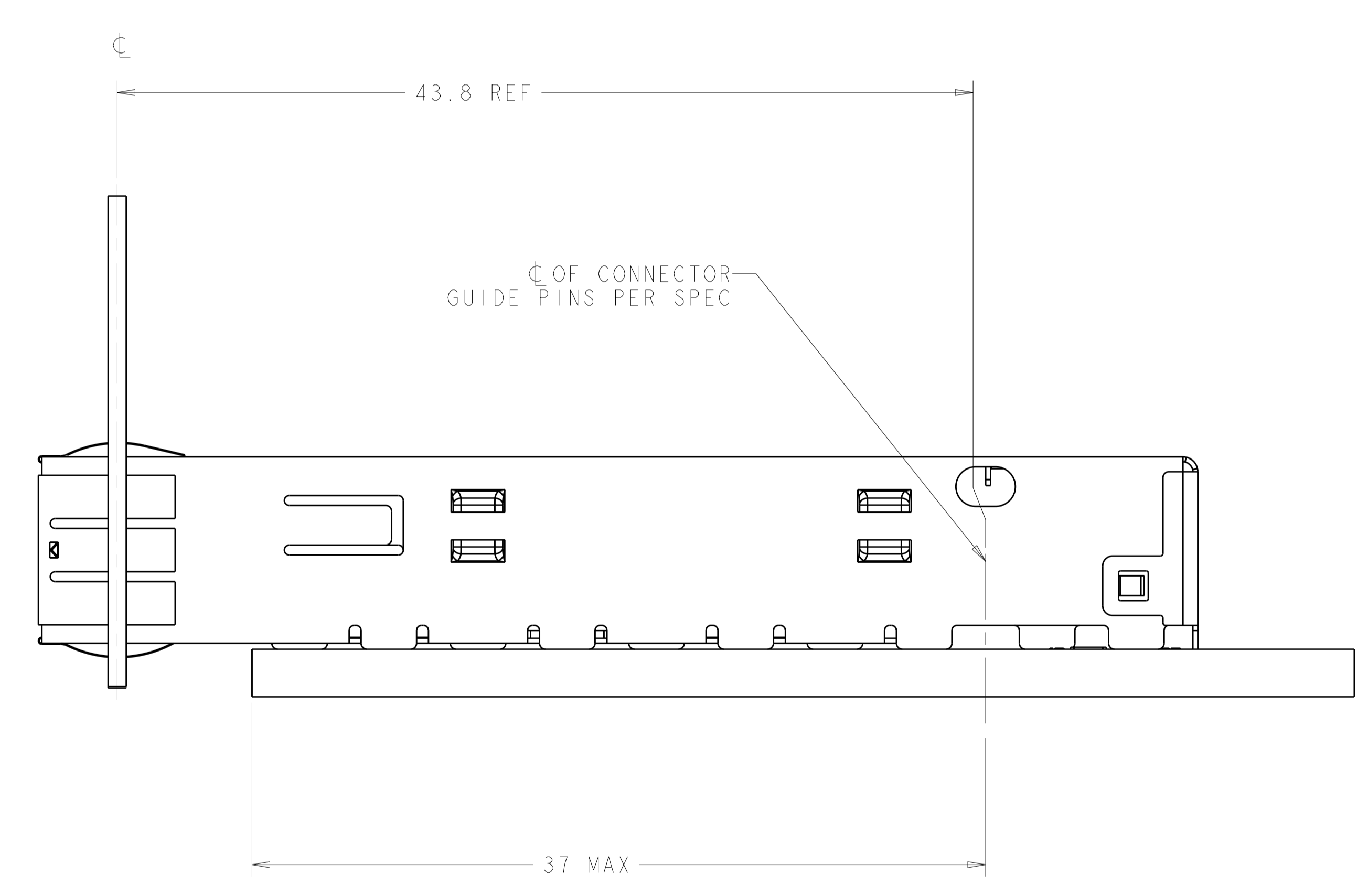
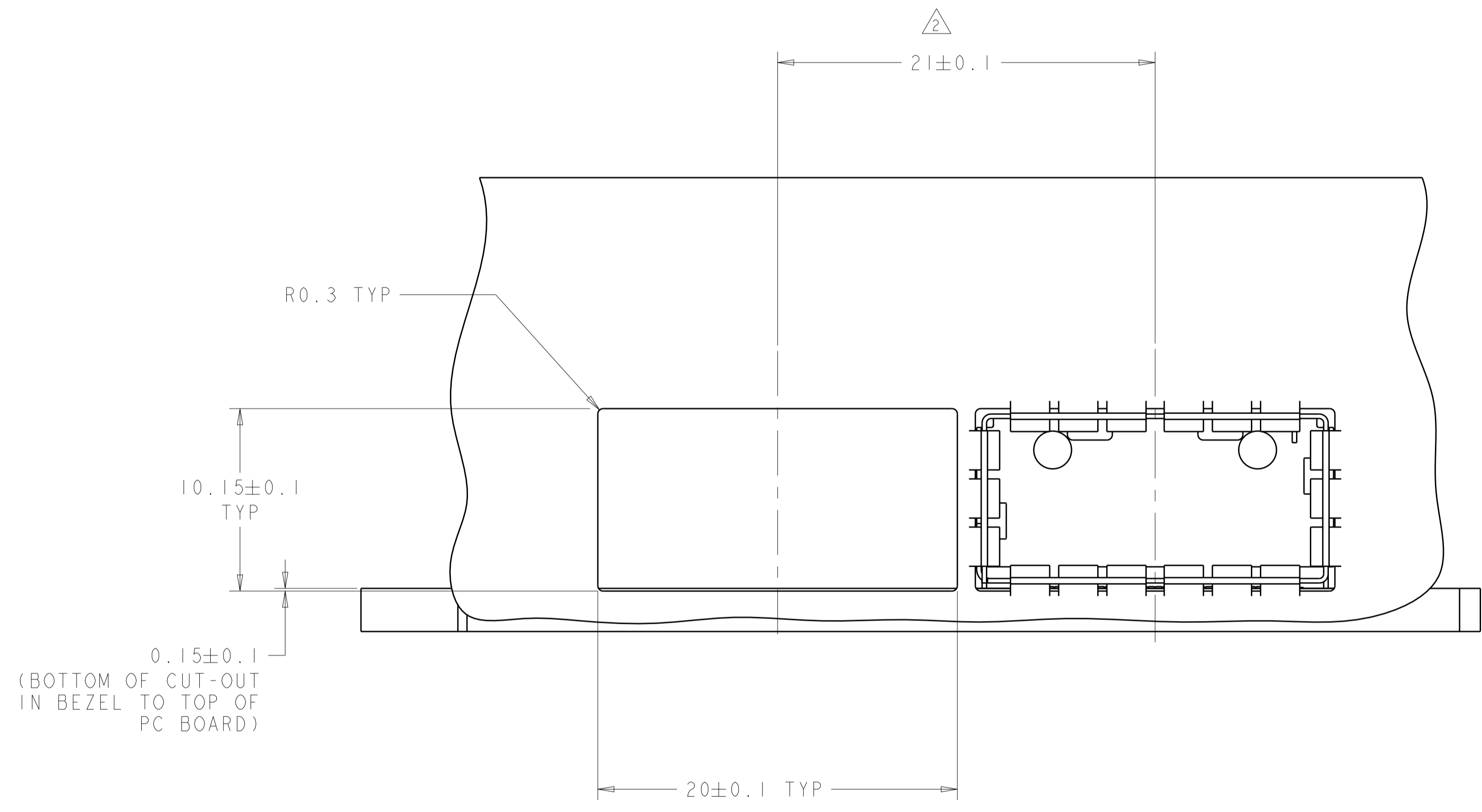
DETAIL J  
SCALE 20:1



1888617-1  
PART NUMBER

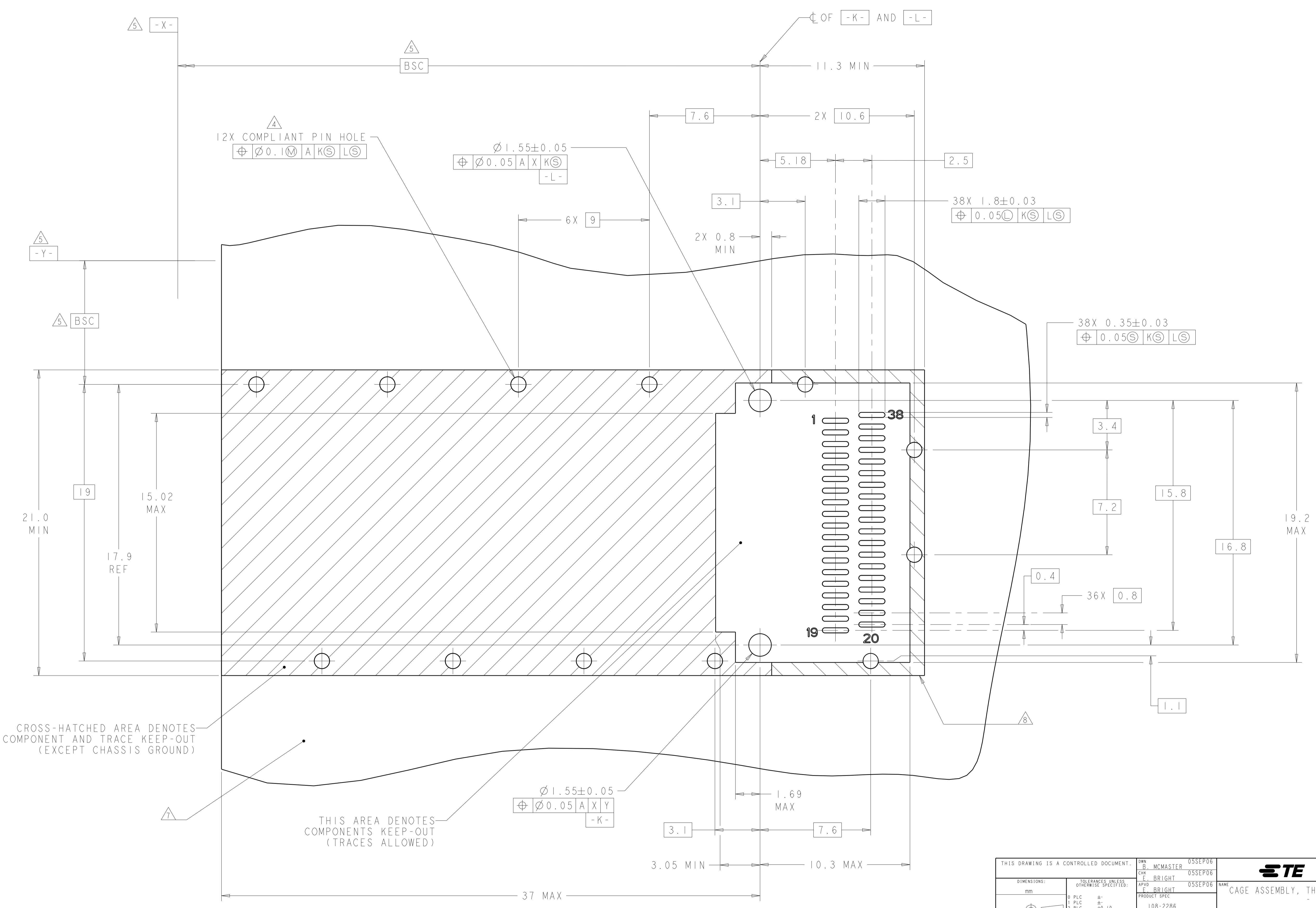
|  |  |                          |   |
|--|--|--------------------------|---|
| THIS DRAWING IS A CONTROLLED DOCUMENT. |  | DMN: B. MCMASTER 05SEP06 | TE Connectivity<br>NAME: CAGE ASSEMBLY, THRU BEZEL, QSFP<br>PRODUCT SPEC: 108-2286<br>APPLICATION SPEC: 114-13217<br>SIZE: CAGE CODE DRAWING NO: A100779C=1888617<br>RESTRICTED TO: - |
| DIMENSIONS:                            |  | CHK: E. BRIGHT 05SEP06   |   |
| TOLERANCES UNLESS OTHERWISE SPECIFIED: |  | APVD: E. BRIGHT 05SEP06  |   |
| mm                                     |  | 0 PLC ±                  |   |
| 1 PLC ±0.10                            |  | 2 PLC ±                  | SCALE: 5:1  |
| 3 PLC ±                                |  | 3 PLC ±                  | SHEET: 1 OF 3   |
| 4 PLC ±                                |  | 4 PLC ±                  | REV: D  |
| ANGLES ±                               |  | FINISH: 10               |   |
| MATERIAL: ⚠                            |  | WEIGHT: -                |   |
| CUSTOMER DRAWING                       |  |                          |   |

| LOC | DIST | REVISIONS   |      |     |      |
|-----|------|-------------|------|-----|------|
| P   | LTN  | DESCRIPTION | DATE | DMN | APVD |
| GP  | 00   | SEE SHEET 1 | -    | -   | -    |
|     |      |             |      |     |      |
|     |      |             |      |     |      |



|  |  |                    |         |   |
|--|--|--------------------|---------|---|
| THIS DRAWING IS A CONTROLLED DOCUMENT. |  | DMN<br>B. MCMASTER | 05SEP06 | <b>STE</b> TE Connectivity              |
| DIMENSIONS:                            |  | CHK<br>E. BRIGHT   | 05SEP06 |   |
| mm                                     | TOLERANCES UNLESS OTHERWISE SPECIFIED: | APVD<br>E. BRIGHT  | 05SEP06 | NAME<br>CAGE ASSEMBLY, THRU BEZEL, QSFP |
| 0 PLC                                  | ±                                      | PRODUCT SPEC       |         | SIZE<br>-                               |
| 1 PLC                                  | ±0.10                                  | APPLICATION SPEC   |         | CAGE CODE<br>-                          |
| 2 PLC                                  | ±                                      | 114-13217          |         | DRAWING NO<br>A100779                   |
| 3 PLC                                  | ±                                      |                    |         | DRAWING NO<br>C=1888617                 |
| 4 PLC                                  | ±                                      |                    |         | RESTRICTED TO<br>-                      |
| ANGLES                                 | ±                                      | WEIGHT             |         | SCALE<br>5:1                            |
| MATERIAL                               | FINISH                                 | CUSTOMER DRAWING   |         | SHEET<br>2 OF 3                         |
|  |  |                    |         | REV<br>D                                |

| LOC |     | DIST |     | REVISIONS |             |      |     |      |
|-----|-----|------|-----|-----------|-------------|------|-----|------|
| P   | LTN | DATE | DMN | APVD      | DESCRIPTION | DATE | DMN | APVD |
| -   | -   | -    | -   | -         | SEE SHEET 1 | -    | -   | -    |



CROSS-HATCHED AREA DENOTES COMPONENT AND TRACE KEEP-OUT (EXCEPT CHASSIS GROUND)

THIS AREA DENOTES COMPONENTS KEEP-OUT (TRACES ALLOWED)

RECOMMENDED PC BOARD LAYOUT  
 SCALE 8:1

|  |  |                        |  |              |                     |               |  |
|--|--|------------------------|--|--------------|---------------------|---------------|--|
| THIS DRAWING IS A CONTROLLED DOCUMENT. |  | DMN B MCMASTER 05SEP06 | TE Connectivity<br>NAME CAGE ASSEMBLY, THRU BEZEL, QSFP<br>PRODUCT SPEC 108-2286<br>APPLICATION SPEC 114-13217<br>WEIGHT<br>CUSTOMER DRAWING | SIZE A100779 | CAGE CODE C=1888617 | RESTRICTED TO |  |
| DIMENSIONS:                            | TOLERANCES UNLESS OTHERWISE SPECIFIED: | CHK E BRIGHT 05SEP06   |  | SCALE 5:1    | SHEET 3 OF 3        | REV D         |  |
| mm                                     | 0 PLC ±                                | APVD F BRIGHT 05SEP06  |  |              |                     |               |  |
|  | 1 PLC ±0.10                            |                        |  |              |                     |               |  |