

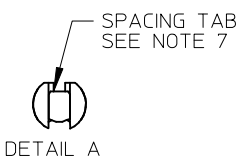
PCB LAYOUT: COMPONENT SIDE
RECOMMENDED PCB THICKNESS:
(1.57±.18)/.062±.007

- NOTES:
- MATERIAL: GLASS FILLED POLYESTER, 94V-0, MOLDED BLACK
 - FINISH: PER SDES-88
 - (154) OVERALL TIN: 0.00254/.000100 MIN.
 - OVERALL NICKEL UNDERPLATE: 0.00127/.000050 MIN.
 - (197) OVERALL REFLOWED MATTE TIN: 0.00152/.000060 MIN.
 - OVER 0.00127/.000050 MIN. NICKEL OVERALL.
 - (208) SELECT GOLD: 0.00038/.000015 MIN.
 - SELECT TIN: 0.00254/.000100 MIN
 - OVERALL NICKEL UNDERPLATE: 0.00127/.000050 MIN.
 - (228) SELECT GOLD: 0.00076/.000030 MIN.
 - SELECT TIN: 0.00254/.000100 MIN.
 - OVERALL NICKEL UNDERPLATE: 0.00127/.000050 MIN.
 - (241) SELECT GOLD: 0.00051/.000020 MIN.
 - SELECT TIN: 0.00254/.000100 MIN.
 - OVERALL NICKEL UNDERPLATE: 0.00127/.000050 MIN.

- PRODUCT SPECIFICATION: PS-08-50.
- PACKAGING INFORMATION: SEE CHARTS
- SOLDERABILITY: PER SMES-152.
- PIN PUSH-OUT FORCE: PRIOR TO SOLDERING, A 3 LB. MINIMUM FORCE (IN EITHER DIRECTION) SHALL BE REQUIRED TO PUSH THE PIN OUT OF THE HEADER.
- PARTS ARE STACKABLE END TO END ON 3.96/.156 CENTERS. (SPACING TABS MUST BE REMOVED ON CIRCUIT SIZES 1-23 BEFORE PARTS ARE STACKABLE.)
- THIS PART CONFORMS TO CLASS B REQUIREMENTS OF COSMETIC SPECIFICATION PS-45499-002.
- TEXT ON PART IS FOR REFERENCE ONLY. TEXT AND TEXT LOCATION MAY VARY DEPENDING ON PART NUMBER AND/OR TOOL.

CIRCUIT	B	A
2	3.96 .156	6.78/7.87 .267/1.310
3	7.92 .312	10.74/11.84 .423/1.466
4	11.89 .468	14.71/15.80 .579/1.622
5	15.85 .624	18.67/19.76 .735/1.778
6	19.81 .780	22.63/23.72 .891/1.934
7	23.77 .936	26.59/27.69 1.047/1.090
8	27.74 1.092	30.56/31.65 1.203/1.246
9	31.70 1.248	34.52/35.61 1.359/1.402
10	35.66 1.404	38.48/39.57 1.515/1.558
11	39.62 1.560	42.44/43.54 1.671/1.714
12	43.59 1.716	46.41/47.50 1.827/1.870
13	47.55 1.872	50.37/51.46 1.983/2.026
14	51.51 2.028	54.33/55.42 2.139/2.182
15	55.47 2.184	58.29/59.39 2.295/2.338
16	59.44 2.340	62.26/63.35 2.451/2.494
17	63.40 2.496	66.22/67.31 2.607/2.650
18	67.36 2.652	70.18/71.27 2.763/2.806
19	71.32 2.808	74.14/75.23 2.919/2.962
20	75.29 2.964	78.11/79.20 3.075/3.118
21	79.25 3.120	82.07/83.16 3.231/3.274
22	83.21 3.276	86.03/87.12 3.387/3.430
23	87.17 3.432	89.94/91.08 3.541/3.586
24	91.14 3.588	93.85/95.00 3.695/3.740

2-*	AJ1
1	AJ2
SHT.	REV.

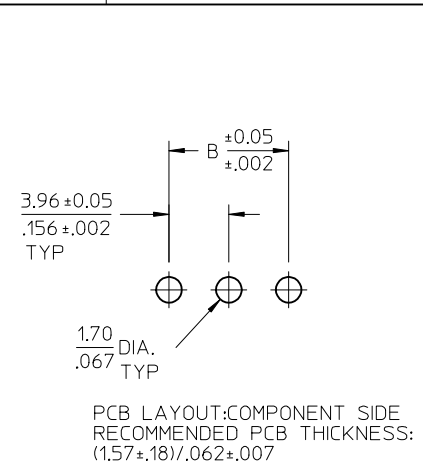
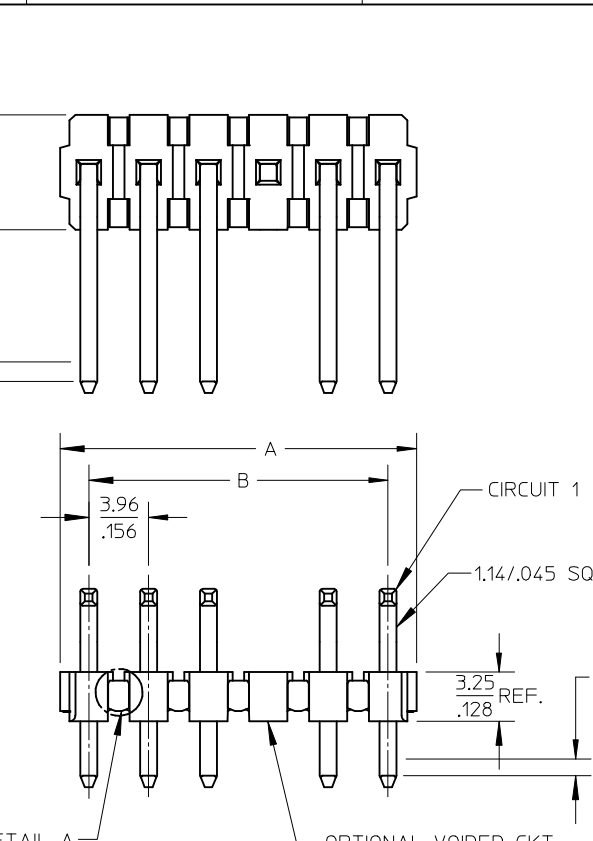
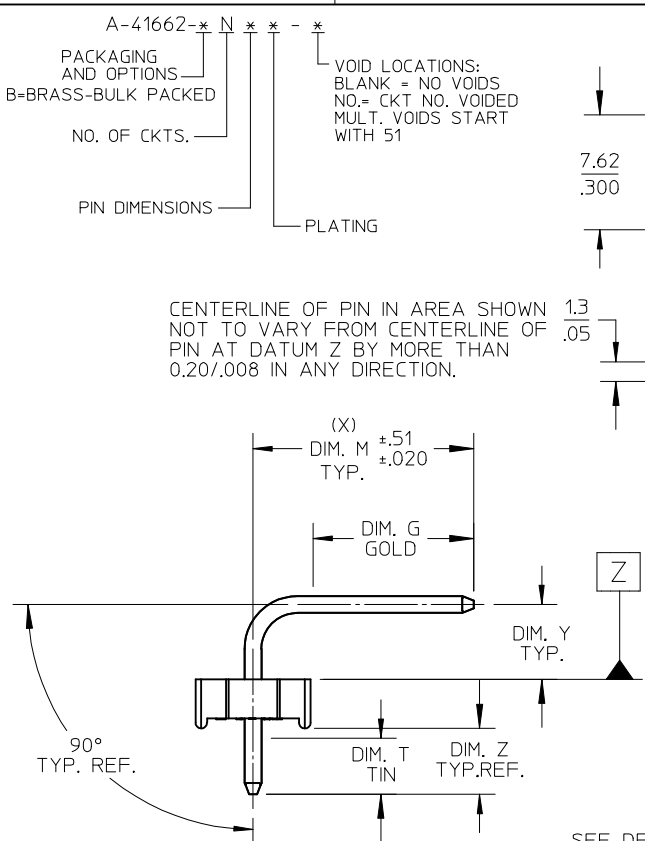


NOTE 9 ADDED	QUALITY SYMBOLS
EC NO: UCP2018-0013	▽E=0
DRWN:GES 2017/07/05	▽E=0
CHKD: 2017/07/28	▽E=0
APPR: ISHWARG	
DESCRIPTION	
REV	
AJ2	

GENERAL TOLERANCES (UNLESS SPECIFIED)		
	mm	INCH
4 PLACES	± ---	± ---
3 PLACES	± ---	± .010
2 PLACES	± 0.25	± .014
1 PLACE	± 0.36	± ---
0 PLACE	±	±
ANGULAR ±1/2°		
DRAFT WHERE APPLICABLE MUST REMAIN WITHIN DIMENSIONS		

DIMENSION STYLE	
MM/IN	
DRAWN BY	DATE
JSCHAFFER	2003/09/15
CHECKED BY	DATE
KSAMIEC	2003/09/15
APPROVED BY	DATE
MARGULIS	2003/09/15
MATERIAL NO.	
SEE CHART	
SIZE	
A	

SCALE	DESIGN UNITS	THIRD ANGLE PROJECTION	
4:1	INCH	⊙	□
TITLE			
KK .156 HEADER ASSEMBLY FLAT BREAKAWAY 2-24 CKTS.			
molex			
DOCUMENT NO.			SHEET NO.
SD-41662-001			1 OF *
THIS DRAWING CONTAINS INFORMATION THAT IS PROPRIETARY TO MOLEX INCORPORATED AND SHOULD NOT BE USED WITHOUT WRITTEN PERMISSION			



CIRCUIT	B	A
2	3.96 .156	6.78/7.87 .267/1.310
3	7.92 .312	10.74/11.84 .423/1.466
4	11.89 .468	14.71/15.80 .579/1.622
5	15.85 .624	18.67/19.76 .735/1.778
6	19.81 .780	22.63/23.72 .891/1.934
7	23.77 .936	26.59/27.69 1.047/1.090
8	27.74 1.092	30.56/31.65 1.203/1.246
9	31.70 1.248	34.52/35.61 1.359/1.402
10	35.66 1.404	38.48/39.57 1.515/1.558
11	39.62 1.560	42.44/43.54 1.671/1.714
12	43.59 1.716	46.41/47.50 1.827/1.870
13	47.55 1.872	50.37/51.46 1.983/2.026
14	51.51 2.028	54.33/55.42 2.139/2.182
15	55.47 2.184	58.29/59.39 2.295/2.338
16	59.44 2.340	62.26/63.35 2.451/2.494
17	63.40 2.496	66.22/67.31 2.607/2.650
18	67.36 2.652	70.18/71.27 2.763/2.806
19	71.32 2.808	74.14/75.23 2.919/2.962
20	75.29 2.964	78.11/79.20 3.075/3.118
21	79.25 3.120	82.07/83.16 3.231/3.274
22	83.21 3.276	86.03/87.12 3.387/3.430
23	87.17 3.432	89.94/91.08 3.541/3.586
24	91.14 3.588	93.85/95.00 3.695/3.740

- NOTES:
- MATERIAL: GLASS FILLED POLYESTER, 94V-0, MOLDED BLACK
 - FINISH: PER SDES-88
 - (154) OVERALL TIN: 0.00254/.000100 MIN.
 - OVERALL NICKEL UNDERPLATE: 0.00127/.000050 MIN.
 - (197) OVERALL REFLOWED MATTE TIN: 0.00152/.000060 MIN.
 - OVER 0.00127/.000050 MIN. NICKEL OVERALL.
 - (208) SELECT GOLD: 0.00038/.000015 MIN.
 - SELECT TIN: 0.00254/.000100 MIN
 - OVERALL NICKEL UNDERPLATE: 0.00127/.000050 MIN.
 - (228) SELECT GOLD: 0.00076/.000030 MIN.
 - SELECT TIN: 0.00254/.000100 MIN.
 - OVERALL NICKEL UNDERPLATE: 0.00127/.000050 MIN.
 - (241) SELECT GOLD: 0.00051/.000020 MIN.
 - SELECT TIN: 0.00254/.000100 MIN.
 - OVERALL NICKEL UNDERPLATE: 0.00127/.000050 MIN.

- PRODUCT SPECIFICATION: PS-08-50.
- PACKAGING INFORMATION: SEE CHARTS
- SOLDERABILITY: PER SMES-152.
- PIN PUSH-OUT FORCE: PRIOR TO SOLDERING, A 3 LB. MINIMUM FORCE (IN EITHER DIRECTION) SHALL BE REQUIRED TO PUSH THE PIN OUT OF THE HEADER.
- PARTS ARE STACKABLE END TO END ON 3.96/.156 CENTERS. (SPACING TABS MUST BE REMOVED ON CIRCUIT SIZES 1-23 BEFORE PARTS ARE STACKABLE.)
- THIS PART CONFORMS TO CLASS B REQUIREMENTS OF COSMETIC SPECIFICATION PS-45499-002.
- TEXT ON PART IS FOR REFERENCE ONLY. TEXT AND TEXT LOCATION MAY VARY DEPENDING ON PART NUMBER AND/OR TOOL.

2-*	AJ1
1	AJ2
SHT.	REV.

NOTE 9 ADDED	2017/07/05
EC NO: UCP2018-0013	2017/07/05
DRWN:GES	
CHKD:	
APPR: ISHWARG	2017/07/28
DESCRIPTION	
REV	
AJ2	

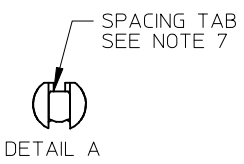
QUALITY SYMBOLS	
▽=0	
▽=0	
▽=0	

	GENERAL TOLERANCES (UNLESS SPECIFIED)	
	mm	INCH
4 PLACES	± ---	± ---
3 PLACES	± ---	± .010
2 PLACES	± 0.25	± .014
1 PLACE	± 0.36	± ---
0 PLACE	±	±
ANGULAR ±1/2°		
DRAFT WHERE APPLICABLE MUST REMAIN WITHIN DIMENSIONS		

DIMENSION STYLE	
MM/IN	
DRAWN BY	DATE
JSCHAFFER	2003/09/15
CHECKED BY	DATE
KSAMIEC	2003/09/15
APPROVED BY	DATE
MARGULIS	2003/09/15
MATERIAL NO.	
SEE CHART	
SIZE	
A	

SCALE	DESIGN UNITS
4:1	INCH
THIRD ANGLE PROJECTION	
TITLE	
KK .156 HEADER ASSEMBLY FLAT BREAKAWAY 2-24 CKTS.	
DOCUMENT NO.	
SD-41662-001	
SHEET NO.	
1 OF *	

THIRD ANGLE PROJECTION	
TITLE	
KK .156 HEADER ASSEMBLY FLAT BREAKAWAY 2-24 CKTS.	
DOCUMENT NO.	
SD-41662-001	
SHEET NO.	
1 OF *	



A-41662-BNA197-*					
HEADER NUMBER:	41185-A-AN				
PIN NUMBER:	43294-0500				
PLATING	197				
PIN LENGTH: L	26.16 / 1.030				
MATING LENGTH: X	14.55 / .573				
GOLD POINT: G	N/A				
PIN HEIGHT: Y	4.95 / .195				
PC TAIL LENGTH: Z	4.67 / .184				
TIN: T	OVERALL				
CKTS:	2-24				
VOIDED CKTS:	SEE TABLE				
PACKAGING:	BULK PK-41662-001				
MATERIAL NUMBER	ENG NUMBER	VOIDS	MATERIAL NUMBER	ENG NUMBER	VOIDS
26-48-1022	-B02A197		26-48-1192	-B19A197	
26-48-1032	-B03A197		26-48-1202	-B20A197	
26-48-1042	-B04A197		26-48-1212	-B21A197	
26-48-1052	-B05A197		26-48-1222	-B22A197	
26-48-1062	-B06A197		26-48-1232	-B23A197	
26-48-1072	-B07A197		26-48-1242	-B24A197	
26-48-1082	-B08A197		26-50-3117	-B11A197-51	2, 4, 6, 8, 10
26-48-1092	-B09A197		26-50-5082	-B08A197-3	3
26-48-1102	-B10A197		41662-0201	-B24A197-51	2, 4, 6
26-48-1112	-B11A197		41662-0202	-B17A197-2	2
26-48-1122	-B12A197		41662-0203	-B19A197-2	2
26-48-1132	-B13A197		41662-0204	-B14A197-51	3, 4, 7, 8, 11, 12
26-48-1142	-B14A197		41662-0205	-B05A197-3	3
26-48-1152	-B15A197		26-50-5050	-B05A197-4	4
26-48-1162	-B16A197		26-50-5060	-B06A197-4	4
26-48-1172	-B17A197				
26-48-1182	-B18A197				

A-41662-BNY208-*					
HEADER NUMBER:	41185-A-AN				
PIN NUMBER:	43294-0497				
PLATING	208				
PIN LENGTH: L	26.16 / 1.030				
MATING LENGTH: X	14.61 / .575				
GOLD POINT: G	6.86 / .270				
PIN HEIGHT: Y	4.95 / .195				
PC TAIL LENGTH: Z	4.63 / .182				
TIN: T	5.08 / .200				
CKTS:	2-24				
VOIDED CKTS:	NONE				
PACKAGING:	BULK PK-41662-001				
MATERIAL NUMBER	ENG NUMBER	VOIDS	MATERIAL NUMBER	ENG NUMBER	VOIDS
41662-0001	-B02Y208		41662-0018	-B19Y208	
41662-0002	-B03Y208		41662-0019	-B20Y208	
41662-0003	-B04Y208		41662-0020	-B21Y208	
41662-0004	-B05Y208		41662-0021	-B22Y208	
41662-0005	-B06Y208		41662-0022	-B23Y208	
41662-0006	-B07Y208		41662-0023	-B24Y208	
41662-0007	-B08Y208				
41662-0008	-B09Y208				
41662-0009	-B10Y208				
41662-0010	-B11Y208				
41662-0011	-B12Y208				
41662-0012	-B13Y208				
41662-0013	-B14Y208				
41662-0014	-B15Y208				
41662-0015	-B16Y208				
41662-0016	-B17Y208				
41662-0017	-B18Y208				

AJ1	<u>ECR/ECN INFORMATION:</u>		KK .156 HEADER ASSEMBLY FLAT BREAKAWAY, 2-24 CKTS.	<u>SHEET No.</u> - 2 -
	<u>EC No.:</u>	UCP2012-3512		
	<u>DATE:</u>	5/1/2012		
<u>DOCUMENT NUMBER:</u> SD- 41662 -001	<u>CREATED / REVISED BY:</u> MKIPPER	<u>CHECKED BY:</u> BANDERSON	<u>APPROVED BY:</u> FSMITH	

A-41662-BNY228-*					
HEADER NUMBER:	41185-A-AN				
PIN NUMBER:	43294-0498				
PLATING	228				
PIN LENGTH: L	26.16 / 1.030				
MATING LENGTH: X	14.61 / .575				
GOLD POINT: G	6.86 / .270				
PIN HEIGHT: Y	4.95 / .195				
PC TAIL LENGTH: Z	4.63 / .182				
TIN: T	5.08/ .200				
CKTS:	2-24				
VOIDED CKTS:	NONE				
PACKAGING:	BULK PK-41662-001				
MATERIAL NUMBER	ENG NUMBER	VOIDS	MATERIAL NUMBER	ENG NUMBER	VOIDS
41662-0024	-B02Y228		41662-0041	-B19Y228	
41662-0025	-B03Y228		41662-0042	-B20Y228	
41662-0026	-B04Y228		41662-0043	-B21Y228	
41662-0027	-B05Y228		41662-0044	-B22Y228	
41662-0028	-B06Y228		41662-0045	-B23Y228	
41662-0029	-B07Y228		41662-0046	-B24Y228	
41662-0030	-B08Y228				
41662-0031	-B09Y228				
41662-0032	-B10Y228				
41662-0033	-B11Y228				
41662-0034	-B12Y228				
41662-0035	-B13Y228				
41662-0036	-B14Y228				
41662-0037	-B15Y228				
41662-0038	-B16Y228				
41662-0039	-B17Y228				
41662-0040	-B18Y228				

A-41662-BNA154-*					
HEADER NUMBER:	41185-A-AN				
PIN NUMBER:	43294-0499				
PLATING	154				
PIN LENGTH: L	26.16 / 1.030				
MATING LENGTH: X	14.55 / .573				
GOLD POINT: G	N/A				
PIN HEIGHT: Y	4.95 / .195				
PC TAIL LENGTH: Z	4.67 / .184				
TIN: T	OVERALL				
CKTS:	2-24				
VOIDED CKTS:	NONE				
PACKAGING:	BULK PK-41662-001				
MATERIAL NUMBER	ENG NUMBER	VOIDS	MATERIAL NUMBER	ENG NUMBER	VOIDS
	-B02A154			-B19A154	
	-B03A154			-B20A154	
	-B04A154			-B21A154	
	-B05A154			-B22A154	
	-B06A154			-B23A154	
	-B07A154			-B24A154	
	-B08A154				
	-B09A154				
	-B10A154				
	-B11A154				
	-B12A154				
	-B13A154				
41662-1142	-B14A154				
	-B15A154				
	-B16A154				
	-B17A154				
	-B18A154				

REV: AJ1	ECR/ECN INFORMATION: EC No.: UCP2012-3512 DATE: 5/1/2012	TITLE: KK .156 HEADER ASSEMBLY FLAT BREAKAWAY, 2-24 CKTS.	SHEET No. - 3 -
DOCUMENT NUMBER: SD- 41662 -001	CREATED / REVISED BY: MKIPPER	CHECKED BY: BANDERSON	APPROVED BY: FSMITH

A-41662-BNB197-*					
HEADER NUMBER:	41185-A-AN				
PIN NUMBER:	43294-0688				
PLATING	197				
PIN LENGTH: L	31.24 / 1.230				
MATING LENGTH: X	19.69 / .775				
GOLD POINT: G	N/A				
PIN HEIGHT: Y	4.95 / .195				
PC TAIL LENGTH: Z	4.62 / .182				
TIN: T	OVERALL				
CKTS:	2-24				
VOIDED CKTS:	NONE				
PACKAGING:	BULK PK-41662-001				
MATERIAL NUMBER	ENG NUMBER	VOIDS	MATERIAL NUMBER	ENG NUMBER	VOIDS
26-48-6022	-B02B197		26-48-6192	-B19B197	
26-48-6032	-B03B197		26-48-6202	-B20B197	
26-48-6042	-B04B197		26-48-6212	-B21B197	
26-48-6052	-B05B197		26-48-6222	-B22B197	
26-48-6062	-B06B197		26-48-6232	-B23B197	
26-48-6072	-B07B197		26-48-6242	-B24B197	
26-48-6082	-B08B197				
26-48-6092	-B09B197				
26-48-6102	-B10B197				
26-48-6112	-B11B197				
26-48-6122	-B12B197				
26-48-6132	-B13B197				
26-48-6142	-B14B197				
26-48-6152	-B15B197				
26-48-6162	-A16B197				
26-48-6172	-A17B197				
26-48-6182	-A18B197				

A-41662-BNB208-*					
HEADER NUMBER:	41185-A-AN				
PIN NUMBER:	43294-0686				
PLATING	208				
PIN LENGTH: L	31.24 / 1.230				
MATING LENGTH: X	19.69 / .775				
GOLD POINT: G	11.30 / .445				
PIN HEIGHT: Y	4.95 / .195				
PC TAIL LENGTH: Z	4.62 / .182				
TIN: T	5.08 / .200				
CKTS:	2-24				
VOIDED CKTS:	NONE				
PACKAGING:	BULK PK-41662-001				
MATERIAL NUMBER	ENG NUMBER	VOIDS	MATERIAL NUMBER	ENG NUMBER	VOIDS
41662-0047	-B02B208		41662-0064	-B19B208	
41662-0048	-B03B208		41662-0065	-B20B208	
41662-0049	-B04B208		41662-0066	-B21B208	
41662-0050	-B05B208		41662-0067	-B22B208	
41662-0051	-B06B208		41662-0068	-B23B208	
41662-0052	-B07B208		41662-0069	-B24B208	
41662-0053	-B08B208				
41662-0054	-B09B208				
41662-0055	-B10B208				
41662-0056	-B11B208				
41662-0057	-B12B208				
41662-0058	-B13B208				
41662-0059	-B14B208				
41662-0060	-B15B208				
41662-0061	-B16B208				
41662-0062	-B17B208				
41662-0063	-B18B208				

REV: AJ1	<u>ECR/ECN INFORMATION:</u>		<u>TITLE:</u> KK .156 HEADER ASSEMBLY FLAT BREAKAWAY, 2-24 CKTS.	<u>SHEET No.</u> - 4 -
	<u>EC No.:</u>	UCP2012-3512		
	<u>DATE:</u>	5/1/2012		
<u>DOCUMENT NUMBER:</u> SD- 41662 -001		<u>CREATED / REVISED BY:</u> MKIPPER	<u>CHECKED BY:</u> BANDERSON	<u>APPROVED BY:</u> FSMITH

A-41662-BNB228-*					
HEADER NUMBER:	41185-A-AN				
PIN NUMBER:	43294-0687				
PLATING	228				
PIN LENGTH: L	31.24 / 1.230				
MATING LENGTH: X	19.69 / .775				
GOLD POINT: G	11.30 / .445				
PIN HEIGHT: Y	4.95 / .195				
PC TAIL LENGTH: Z	4.62 / .182				
TIN: T	5.08/ .200				
CKTS:	2-24				
VOIDED CKTS:	NONE				
PACKAGING:	BULK PK-41662-001				
MATERIAL NUMBER	ENG NUMBER	VOIDS	MATERIAL NUMBER	ENG NUMBER	VOIDS
41662-0070	-B02B228		41662-0087	-B19B228	
41662-0071	-B03B228		41662-0088	-B20B228	
41662-0072	-B04B228		41662-0089	-B21B228	
41662-0073	-B05B228		41662-0090	-B22B228	
41662-0074	-B06B228		41662-0091	-B23B228	
41662-0075	-B07B228		41662-0092	-B24B228	
41662-0076	-B08B228				
41662-0077	-B09B228				
41662-0078	-B10B228				
41662-0079	-B11B228				
41662-0080	-B12B228				
41662-0081	-B13B228				
41662-0082	-B14B228				
41662-0083	-B15B228				
41662-0084	-B16B228				
41662-0085	-B17B228				
41662-0086	-B18B228				

A-41662-BNA241-*					
HEADER NUMBER:	41185-A-AN				
PIN NUMBER:	43294-0501				
PLATING	241				
PIN LENGTH: L	26.16 / 1.030				
MATING LENGTH: X	14.55 / .573				
GOLD POINT: G	6.85/ .270				
PIN HEIGHT: Y	4.95 / .195				
PC TAIL LENGTH: Z	4.67 / .184				
TIN: T	5.08/ .200				
CKTS:	2-24				
VOIDED CKTS:	NONE				
PACKAGING:	BULK PK-41662-001				
MATERIAL NUMBER	ENG NUMBER	VOIDS	MATERIAL NUMBER	ENG NUMBER	VOIDS
26-48-2022	-B02A241		26-48-2192	-B19A241	
26-48-2032	-B03A241		26-48-2202	-B20A241	
26-48-2042	-B04A241		26-48-2212	-B21A241	
26-48-2052	-B05A241		26-48-2222	-B22A241	
26-48-2062	-B06A241		26-48-2232	-B23A241	
26-48-2072	-B07A241		26-48-2242	-B24A241	
26-48-2082	-B08A241				
26-48-2092	-B09A241				
26-48-2102	-B10A241				
26-48-2112	-B11A241				
26-48-2122	-B12A241				
26-48-2132	-B13A241				
26-48-2142	-B14A241				
26-48-2152	-B15A241				
26-48-2162	-B16A241				
26-48-2172	-B17A241				
26-48-2182	-B18A241				

REV: AJ1	<u>ECR/ECN INFORMATION:</u>		<u>TITLE:</u> KK .156 HEADER ASSEMBLY FLAT BREAKAWAY, 2-24 CKTS.	<u>SHEET No.</u> - 5 -
	<u>EC No.:</u>	UCP2012-3512		
	<u>DATE:</u>	5/1/2012		
<u>DOCUMENT NUMBER:</u> SD- 41662 -001	<u>CREATED / REVISED BY:</u> MKIPPER	<u>CHECKED BY:</u> BANDERSON	<u>APPROVED BY:</u> FSMITH	

A-41662-BNB241-*					
HEADER NUMBER:	41185-A-AN				
PIN NUMBER:	43294-0689				
PLATING	241				
PIN LENGTH: L	31.24 / 1.230				
MATING LENGTH: X	19.69 / .775				
GOLD POINT: G	11.30/.445				
PIN HEIGHT: Y	4.95 / .195				
PC TAIL LENGTH: Z	4.62 / .182				
TIN: T	5.08/ .200				
CKTS:	2-24				
VOIDED CKTS:	NONE				
PACKAGING:	BULK PK-41662-001				
MATERIAL NUMBER	ENG NUMBER	VOIDS	MATERIAL NUMBER	ENG NUMBER	VOIDS
26-48-5022	-B02B241		26-48-5192	-B19B241	
26-48-5032	-B03B241		26-48-5202	-B20B241	
26-48-5042	-B04B241		26-48-5212	-B21B241	
26-48-5052	-B05B241		26-48-5222	-B22B241	
26-48-5062	-B06B241		26-48-5232	-B23B241	
26-48-5072	-B07B241		26-48-5242	-B24B241	
26-48-5082	-B08B241				
26-48-5092	-B09B241				
26-48-5102	-B10B241				
26-48-5112	-B11B241				
26-48-5122	-B12B241				
26-48-5132	-B13B241				
26-48-5142	-B14B241				
26-48-5152	-B15B241				
26-48-5162	-B16B241				
26-48-5172	-B17B241				
26-48-5182	-B18B241				

A-41662-BNC197-*					
HEADER NUMBER:	41185-A-AN				
PIN NUMBER:	43294-0572				
PLATING	197				
PIN LENGTH: L	27.94 / 1.100				
MATING LENGTH: X	14.61 / .575				
GOLD POINT: G	N/A				
PIN HEIGHT: Y	6.63 / .261				
PC TAIL LENGTH: Z	4.72 / .186				
TIN: T	OVERALL				
CKTS:	2-24				
VOIDED CKTS:	NONE				
PACKAGING:	BULK PK-41662-001				
MATERIAL NUMBER	ENG NUMBER	VOIDS	MATERIAL NUMBER	ENG NUMBER	VOIDS
41662-0093	-B02C197		41662-0109	-B19C197	
41662-0094	-B03C197		41662-0110	-B20C197	
41662-0095	-B04C197		41662-0111	-B21C197	
41662-0096	-B05C197		41662-0112	-B22C197	
41662-0097	-B06C197		41662-0113	-B23C197	
41662-0098	-B07C197		41662-0114	-B24C197	
41662-0099	-B08C197				
41662-0100	-B09C197				
26-48-7102	-B10C197				
41662-0101	-B11C197				
41662-0102	-B12C197				
41662-0103	-B13C197				
41662-0104	-B14C197				
41662-0105	-B15C197				
41662-0106	-B16C197				
41662-0107	-B17C197				
41662-0108	-B18C197				

REV: AJ1	<u>ECR/ECN INFORMATION:</u>		<u>TITLE:</u> KK .156 HEADER ASSEMBLY FLAT BREAKAWAY, 2-24 CKTS.	<u>SHEET No.</u> - 6 -
	<u>EC No.:</u>	UCP2012-3512		
	<u>DATE:</u>	5/1/2012		
<u>DOCUMENT NUMBER:</u> SD- 41662 -001	<u>CREATED / REVISED BY:</u> MKIPPER	<u>CHECKED BY:</u> BANDERSON	<u>APPROVED BY:</u> FSMITH	

A-41662-BND197-*					
HEADER NUMBER:	41185-A-AN				
PIN NUMBER:	43294-0455				
PLATING	197				
PIN LENGTH: L	24.89 / .980				
MATING LENGTH: X	14.86 / .585				
GOLD POINT: G	N/A				
PIN HEIGHT: Y	4.95 / .195				
PC TAIL LENGTH: Z	3.10 / .122				
TIN: T	OVERALL				
CKTS:	2-24				
VOIDED CKTS:	NONE				
PACKAGING:	BULK PK-41662-001				
MATERIAL NUMBER	ENG NUMBER	VOIDS	MATERIAL NUMBER	ENG NUMBER	VOIDS
41662-0115	-B02D197		41662-0131	-B19D197	
41662-0116	-B03D197		41662-0132	-B20D197	
41662-0117	-B04D197		41662-0133	-B21D197	
41662-0118	-B05D197		41662-0134	-B22D197	
26-48-9065	-B06D197		41662-0135	-B23D197	
41662-0119	-B07D197		26-48-9245	-B24D197	
41662-0120	-B08D197				
41662-0121	-B09D197				
41662-0122	-B10D197				
41662-0123	-B11D197				
41662-0124	-B12D197				
41662-0125	-B13D197				
41662-0126	-B14D197				
41662-0127	-B15D197				
41662-0128	-B16D197				
41662-0129	-B17D197				
41662-0130	-B18D197				

A-41662-BNK197-*					
HEADER NUMBER:	41185-A-AN				
PIN NUMBER:	43294-0240				
PLATING	197				
PIN LENGTH: L	19.05 / .750				
MATING LENGTH: X	7.75 / .305				
GOLD POINT: G	N/A				
PIN HEIGHT: Y	4.95 / .195				
PC TAIL LENGTH: Z	4.37 / .172				
TIN: T	OVERALL				
CKTS:	2-24				
VOIDED CKTS:	NONE				
PACKAGING:	BULK PK-41662-001				
MATERIAL NUMBER	ENG NUMBER	VOIDS	MATERIAL NUMBER	ENG NUMBER	VOIDS
41662-0136	-B02K197		41662-0153	-B19K197	
41662-0137	-B03K197		26-48-4200	-B20K197	
41662-0138	-B04K197		41662-0154	-B21K197	
41662-0139	-B05K197		41662-0155	-B22K197	
41662-0140	-B06K197		41662-0156	-B23K197	
41662-0141	-B07K197		41662-0157	-B24K197	
41662-0142	-B08K197				
41662-0143	-B09K197				
41662-0144	-B10K197				
41662-0145	-B11K197				
41662-0146	-B12K197				
41662-0147	-B13K197				
41662-0148	-B14K197				
41662-0149	-B15K197				
41662-0150	-B16K197				
41662-0151	-B17K197				
41662-0152	-B18K197				

AJ1	<u>ECR/ECN INFORMATION:</u>		KK .156 HEADER ASSEMBLY FLAT BREAKAWAY, 2-24 CKTS.	<u>SHEET No.</u> - 7 -
	<u>EC No.:</u>	UCP2012-3512		
	<u>DATE:</u>	5/1/2012		
<u>DOCUMENT NUMBER:</u> SD- 41662 -001	<u>CREATED / REVISED BY:</u> MKIPPER	<u>CHECKED BY:</u> BANDERSON	<u>APPROVED BY:</u> FSMITH	

A-41662-BNN197-*					
HEADER NUMBER:	41185-A-AN				
PIN NUMBER:	43294-0832				
PLATING	197				
PIN LENGTH: L	35.05 / 1.380				
MATING LENGTH: X	13.72 / .540				
GOLD POINT: G	N/A				
PIN HEIGHT: Y	5.21 / .205				
PC TAIL LENGTH: Z	14.15 / .557				
TIN: T	OVERALL				
CKTS:	2-24				
VOIDED CKTS:	NONE				
PACKAGING:	BULK PK-41662-001				
MATERIAL NUMBER	ENG NUMBER	VOIDS	MATERIAL NUMBER	ENG NUMBER	VOIDS
41662-0158	-B02N197		41662-0175	-B19N197	
41662-0159	-B03N197		41662-0176	-B20N197	
41662-0160	-B04N197		41662-0177	-B21N197	
41662-0161	-B05N197		41662-0178	-B22N197	
41662-0162	-B06N197		41662-0179	-B23N197	
41662-0163	-B07N197		26-58-1241	-B24N197	
41662-0164	-B08N197				
41662-0165	-B09N197				
41662-0166	-B10N197				
41662-0167	-B11N197				
41662-0168	-B12N197				
41662-0169	-B13N197				
41662-0170	-B14N197				
41662-0171	-B15N197				
41662-0172	-B16N197				
41662-0173	-B17N197				
41662-0174	-B18N197				

A-41662-BNH241-*					
HEADER NUMBER:	41185-A-AN				
PIN NUMBER:	43294-0857				
PLATING	241				
PIN LENGTH: L	35.81 / 1.410				
MATING LENGTH: X	16.61 / .654				
GOLD POINT: G	6.85/270				
PIN HEIGHT: Y	5.41 / .213				
PC TAIL LENGTH: Z	11.84 / .466				
TIN: T	5.08/.200				
CKTS:	2-24				
VOIDED CKTS:	NONE				
PACKAGING:	BULK PK-41662-001				
MATERIAL NUMBER	ENG NUMBER	VOIDS	MATERIAL NUMBER	ENG NUMBER	VOIDS
41662-0180	-B02H241		41662-0195	-B19H241	
41662-0181	-B03H241		41662-0196	-B20H241	
41662-0182	-B04H241		41662-0197	-B21H241	
41662-0183	-B05H241		41662-0198	-B22H241	
41662-0184	-B06H241		41662-0199	-B23H241	
41662-0185	-B07H241		41662-0200	-B24H241	
41662-0186	-B08H241				
41662-0187	-B09H241				
26-58-8100	-B10H241				
41662-0188	-B11H241				
26-58-8120	-B12H241				
41662-0189	-B13H241				
41662-0190	-B14H241				
41662-0191	-B15H241				
41662-0192	-B16H241				
41662-0193	-B17H241				
41662-0194	-B18H241				

REV: AJ1	ECR/ECN INFORMATION: EC No.: UCP2012-3512 DATE: 5/1/2012	TITLE: KK .156 HEADER ASSEMBLY FLAT BREAKAWAY, 2-24 CKTS.	SHEET No. - 8 -
DOCUMENT NUMBER: SD- 41662 -001	CREATED / REVISED BY: MKIPPER	CHECKED BY: BANDERSON	APPROVED BY: FSMITH

A-41662-BNZ197-*					
HEADER NUMBER:	41185-A-AN				
PIN NUMBER:	43294-0283				
PLATING	197				
PIN LENGTH: L	20.32 / .800				
MATING LENGTH: X	9.27 / .365				
GOLD POINT: G	N/A				
PIN HEIGHT: Y	4.95 / .195				
PC TAIL LENGTH: Z	4.12 / .162				
TIN: T	OVERALL				
CKTS:	2-24				
VOIDED CKTS:	NONE				
PACKAGING:	BULK PK-41662-001				
MATERIAL NUMBER	ENG NUMBER	VOIDS	MATERIAL NUMBER	ENG NUMBER	VOIDS
41662-0207	-B02Z197		41662-0224	-B19Z197	
41662-0208	-B03Z197		41662-0225	-B20Z197	
41662-0209	-B04Z197		41662-0226	-B21Z197	
41662-0210	-B05Z197		41662-0227	-B22Z197	
41662-0211	-B06Z197		41662-0228	-B23Z197	
41662-0212	-B07Z197		41662-0229	-B24Z197	
41662-0213	-B08Z197				
41662-0214	-B09Z197				
41662-0215	-B10Z197				
41662-0216	-B11Z197				
41662-0217	-B12Z197				
41662-0218	-B13Z197				
41662-0219	-B14Z197				
41662-0220	-B15Z197				
41662-0221	-B16Z197				
41662-0222	-B17Z197				
41662-0223	-B18Z197				

A-41662-BNAA197-*					
HEADER NUMBER:	41185-A-AN				
PIN NUMBER:	43294-0455				
PLATING	197				
PIN LENGTH: L	24.89 / .980				
MATING LENGTH: X	6.98 / .275				
GOLD POINT: G	N/A				
PIN HEIGHT: Y	4.95 / .195				
PC TAIL LENGTH: Z	10.98 / .432				
TIN: T	OVERALL				
CKTS:	2-24				
VOIDED CKTS:	NONE				
PACKAGING:	BULK PK-41662-001				
MATERIAL NUMBER	ENG NUMBER	VOIDS	MATERIAL NUMBER	ENG NUMBER	VOIDS
41662-0500	-B02AA197		41662-0517	-B19AA197	
41662-0501	-B03AA197		41662-0518	-B20AA197	
41662-0502	-B04AA197		41662-0519	-B21AA197	
41662-0503	-B05AA197		41662-0520	-B22AA197	
41662-0504	-B06AA197		41662-0521	-B23AA197	
41662-0505	-B07AA197		41662-0522	-B24AA197	
41662-0506	-B08AA197				
41662-0507	-B09AA197				
41662-0508	-B10AA197				
41662-0509	-B11AA197				
41662-0510	-B12AA197				
41662-0511	-B13AA197				
41662-0512	-B14AA197				
41662-0513	-B15AA197				
41662-0514	-B16AA197				
41662-0515	-B17AA197				
41662-0516	-B18AA197				

REV: AJ1	ECR/ECN INFORMATION: EC No.: UCP2012-3512 DATE: 5/1/2012	TITLE: KK .156 HEADER ASSEMBLY FLAT BREAKAWAY, 2-24 CKTS.	SHEET No. - 9 -
DOCUMENT NUMBER: SD- 41662 -001	CREATED / REVISED BY: MKIPPER	CHECKED BY: BANDERSON	APPROVED BY: FSMITH

A-41662-BNAB197-*					
HEADER NUMBER:	41185-A-AN				
PIN NUMBER:	43294-0526				
PLATING	197				
PIN LENGTH: L	26.92 / 1.060				
MATING LENGTH: X	14.53 / .572				
GOLD POINT: G	N/A				
PIN HEIGHT: Y	5.54 / .218				
PC TAIL LENGTH: Z	4.88 / .192				
TIN: T	OVERALL				
CKTS:	2-24				
VOIDED CKTS:	SEE CHART				
PACKAGING:	BULK PK-41662-001				
MATERIAL NUMBER	ENG NUMBER	VOIDS	MATERIAL NUMBER	ENG NUMBER	VOIDS
41662-0523	-B02AB197		41662-0540	-B19AB197	
41662-0524	-B03AB197		41662-0541	-B20AB197	
41662-0525	-B04AB197		41662-0542	-B21AB197	
41662-0526	-B05AB197		41662-0543	-B22AB197	
41662-0527	-B06AB197		41662-0544	-B23AB197	
41662-0528	-B07AB197		41662-0545	-B24AB197	
41662-0529	-B08AB197		41662-0546	-B05AB197-51	2, 4
41662-0530	-B09AB197				
41662-0531	-B10AB197				
41662-0532	-B11AB197				
41662-0533	-B12AB197				
41662-0534	-B13AB197				
41662-0535	-B14AB197				
41662-0536	-B15AB197				
41662-0537	-B16AB197				
41662-0538	-B17AB197				
41662-0539	-B18AB197				

A-41662-BNAC197-*					
HEADER NUMBER:	41185-A-AN				
PIN NUMBER:	43294-0400				
PLATING	197				
PIN LENGTH: L	23.37 / .920				
MATING LENGTH: X	12.32 / .485				
GOLD POINT: G	N/A				
PIN HEIGHT: Y	5.54 / .218				
PC TAIL LENGTH: Z	3.51 / .138				
TIN: T	OVERALL				
CKTS:	2-24				
VOIDED CKTS:	SEE CHART				
PACKAGING:	BULK PK-41662-001				
MATERIAL NUMBER	ENG NUMBER	VOIDS	MATERIAL NUMBER	ENG NUMBER	VOIDS
41662-0600	-B02AC197		41662-0617	-B19AC197	
41662-0601	-B03AC197		41662-0618	-B20AC197	
41662-0602	-B04AC197		41662-0619	-B21AC197	
41662-0603	-B05AC197		41662-0620	-B22AC197	
41662-0604	-B06AC197		41662-0621	-B23AC197	
41662-0605	-B07AC197		41662-0622	-B24AC197	
41662-0606	-B08AC197		41662-0623	-B15AC197-2	2
41662-0607	-B09AC197				
41662-0608	-B10AC197				
41662-0609	-B11AC197				
41662-0610	-B12AC197				
41662-0611	-B13AC197				
41662-0612	-B14AC197				
41662-0613	-B15AC197				
41662-0614	-B16AC197				
41662-0615	-B17AC197				
41662-0616	-B18AC197				

REV: AJ1	<u>ECR/ECN INFORMATION:</u>	<u>TITLE:</u> KK .156 HEADER ASSEMBLY FLAT BREAKAWAY, 2-24 CKTS.	<u>SHEET No.</u> - 10 -
	EC No.: UCP2012-3512 DATE: 5/1/2012		
<u>DOCUMENT NUMBER:</u> SD- 41662 -001	<u>CREATED / REVISED BY:</u> MKIPPER	<u>CHECKED BY:</u> BANDERSON	<u>APPROVED BY:</u> FSMITH

A-41662-BNAD197-*					
HEADER NUMBER:	41185-A-AN				
PIN NUMBER:	43294-0436				
PLATING	197				
PIN LENGTH: L	24.38 / .960				
MATING LENGTH: X	14.88 / .586				
GOLD POINT: G	N/A				
PIN HEIGHT: Y	4.45 / .175				
PC TAIL LENGTH: Z	3.05 / .120				
TIN: T	OVERALL				
CKTS:	2-24				
VOIDED CKTS:	SEE CHART				
PACKAGING:	BULK PK-41662-001				
MATERIAL NUMBER	ENG NUMBER	VOIDS	MATERIAL NUMBER	ENG NUMBER	VOIDS
	-B02AD197			-B19AD197	
	-B03AD197		68342-1001	-B20AD197	
	-B04AD197			-B21AD197	
	-B05AD197			-B22AD197	
	-B06AD197			-B23AD197	
	-B07AD197			-B24AD197	
	-B08AD197				
	-B09AD197				
	-B10AD197				
	-B11AD197				
	-B12AD197				
	-B13AD197				
	-B14AD197				
	-B15AD197				
	-B16AD197				
	-B17AD197				
	-B18AD197				

A-41662-BNZ208-*					
HEADER NUMBER:	41185-A-AN				
PIN NUMBER:	43294-0353				
PLATING	208				
PIN LENGTH: L	22.35 / .880				
MATING LENGTH: X	10.67 / .420				
GOLD POINT: G	10.16 / .400				
PIN HEIGHT: Y	4.95 / .195				
PC TAIL LENGTH: Z	4.75 / .187				
TIN: T	5.08 / .200				
CKTS:	2-24				
VOIDED CKTS:	NONE				
PACKAGING:	BULK PK-41662-001				
MATERIAL NUMBER	ENG NUMBER	VOIDS	MATERIAL NUMBER	ENG NUMBER	VOIDS
41662-0646	-B02Z208		41662-0663	-B19Z208	
41662-0647	-B03Z208		41662-0664	-B20Z208	
41662-0648	-B04Z208		41662-0665	-B21Z208	
41662-0649	-B05Z208		41662-0666	-B22Z208	
41662-0650	-B06Z208		41662-0667	-B23Z208	
41662-0651	-B07Z208		41662-0668	-B24Z208	
41662-0652	-B08Z208				
41662-0653	-B09Z208				
41662-0654	-B10Z208				
41662-0655	-B11Z208				
41662-0656	-B12Z208				
41662-0657	-B13Z208				
41662-0658	-B14Z208				
41662-0659	-B15Z208				
41662-0660	-B16Z208				
41662-0661	-B17Z208				
41662-0662	-B18Z208				

REV: AJ1	ECR/ECN INFORMATION: EC No.: UCP2012-3512 DATE: 5/1/2012	TITLE: KK .156 HEADER ASSEMBLY FLAT BREAKAWAY, 2-24 CKTS.	SHEET No. - 11 -
DOCUMENT NUMBER: SD- 41662 -001	CREATED / REVISED BY: MKIPPER	CHECKED BY: BANDERSON	APPROVED BY: FSMITH

