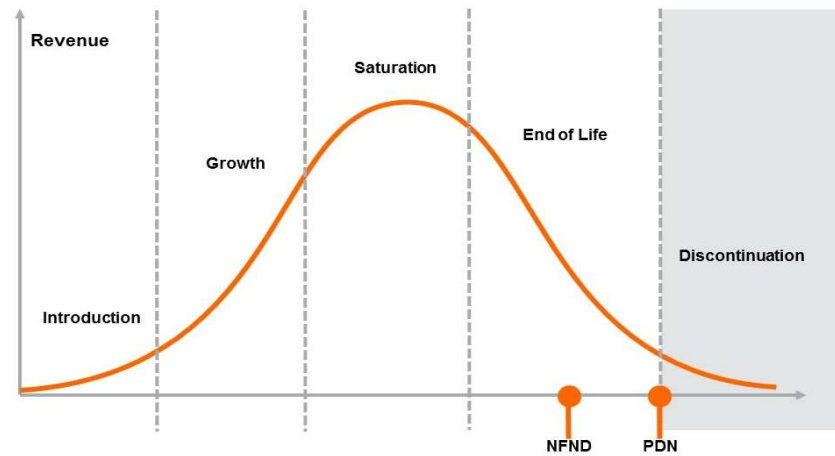


Product Or Individual Q-Code Discontinuation (acc. JEDEC J-STD-048) OS-PDN-2022-087

15 November 2022

Last order: 01 June 2023

Last delivery: 01 December 2023



Please direct your feedback to your local Sales office.

DISCONTINUED				NEW (REPLACEMENT)		
Device	Ordering Code	Brand	Reason for discontinuation	Device	Datasheet Ordering Code	Brand
LW E67C	all					
LW E67C-T1V2-5K8L-1-30-R18-Z	Q65110A1932	Power TOPLED	SiC: forced phase out by supplier PDN	KW DCLMS2.EC / LW TVSG.BB	Q65113A1685 / Q65112A5035	E3014 / TOPLED
LW E67C-T2V1-5K5L-1-30-R18-Z	Q65110A5473	Power TOPLED	SiC: forced phase out by supplier PDN	KW DCLMS2.EC / LW TVSG.BB	Q65113A1685 / Q65112A5035	E3014 / TOPLED
LW E67C-T2V1-5K8L-1-30-R18-Z	Q65110A1930	Power TOPLED	SiC: forced phase out by supplier PDN	KW DCLMS2.EC / LW TVSG.BB	Q65113A1685 / Q65112A5035	E3014 / TOPLED
LW E67C-U1V1-8K8L-34-30-R18-Z-XX	Q65110A7993	Power TOPLED	SiC: forced phase out by supplier PDN	KW DCLMS2.EC / LW TVSG.BB	Q65113A1685 / Q65112A5035	E3014 / TOPLED
LW E67C-U1V2-56K-1-30-R18-Z	Q65111A1894	Power TOPLED	SiC: forced phase out by supplier PDN	KW DCLMS2.EC / LW TVSG.BB	Q65113A1685 / Q65112A5035	E3014 / TOPLED
LW E67C-U1V2-5K5L-34-30-R18-Z-VIS	Q65110A8743	Power TOPLED	SiC: forced phase out by supplier PDN	KW DCLMS2.EC / LW TVSG.BB	Q65113A1685 / Q65112A5035	E3014 / TOPLED
LW E67C-U1V2-5K6L-1-30-R18-Z	Q65110A3414	Power TOPLED	SiC: forced phase out by supplier PDN	KW DCLMS2.EC / LW TVSG.BB	Q65113A1685 / Q65112A5035	E3014 / TOPLED
LW E67C-U1V2-5K8L-1-30-R18-Z	Q65110A4080	Power TOPLED	SiC: forced phase out by supplier PDN	KW DCLMS2.EC / LW TVSG.BB	Q65113A1685 / Q65112A5035	E3014 / TOPLED
LW E67C-U1V2-6K6L-1-30-R18-Z	Q65110A3602	Power TOPLED	SiC: forced phase out by supplier PDN	KW DCLMS2.EC / LW TVSG.BB	Q65113A1685 / Q65112A5035	E3014 / TOPLED
LW E67C-U2V2-5K8L-1-30-R18-Z	Q65110A1931	Power TOPLED	SiC: forced phase out by supplier PDN	KW DCLMS2.EC / LW TVSG.BB	Q65113A1685 / Q65112A5035	E3014 / TOPLED
LW E67C-U2V2-6K-1-30-R18-Z-XX	Q65111A6458	Power TOPLED	SiC: forced phase out by supplier PDN	KW DCLMS2.EC / LW TVSG.BB	Q65113A1685 / Q65112A5035	E3014 / TOPLED
LW E67C-U2V2-6K6L-1-30-R18-Z	Q65110A9558	Power TOPLED	SiC: forced phase out by supplier PDN	KW DCLMS2.EC / LW TVSG.BB	Q65113A1685 / Q65112A5035	E3014 / TOPLED
LW E67C-U2V2-6K7L-1-30-R18-Z	Q65110A8212	Power TOPLED	SiC: forced phase out by supplier PDN	KW DCLMS2.EC / LW TVSG.BB	Q65113A1685 / Q65112A5035	E3014 / TOPLED
LW E67C-U2V2-6L-1-30-R18-Z	Q65111A0525	Power TOPLED	SiC: forced phase out by supplier PDN	KW DCLMS2.EC / LW TVSG.BB	Q65113A1685 / Q65112A5035	E3014 / TOPLED
LW E67C-U2V2-7L8L-1-30-R18-Z	Q65110A3215	Power TOPLED	SiC: forced phase out by supplier PDN	KW DCLMS2.EC / LW TVSG.BB	Q65113A1685 / Q65112A5035	E3014 / TOPLED
LW E67C-U2V2-8K8L-1-30-R18-Z	Q65110A2755	Power TOPLED	SiC: forced phase out by supplier PDN	KW DCLMS2.EC / LW TVSG.BB	Q65113A1685 / Q65112A5035	E3014 / TOPLED
LW E67C-U2V2-8K8L-34-30-R18-Z	Q65110A8046	Power TOPLED	SiC: forced phase out by supplier PDN	KW DCLMS2.EC / LW TVSG.BB	Q65113A1685 / Q65112A5035	E3014 / TOPLED
LW E67C-V1-6K-1-30-R18-Z-XX	Q65110A9550	Power TOPLED	SiC: forced phase out by supplier PDN	KW DCLMS2.EC / LW TVSG.BB	Q65113A1685 / Q65112A5035	E3014 / TOPLED