

ITEM	MOLEX P/N	DESCRIPTION	QTY	UOM
A,B	511630600	2.5 W/B REC HSG	2	PC
C	511640605	2.5 W/B RETAINER	2	PC
D	507528200	Mini-Lock 2.5 W/B Crimp Rec Term 20-22AWG	12	PC
E	884260070	PAPER PRINTED PAPER WHITE (S100X150YAJ)	1	PC

FROM	TO	CABLE DESCRIPTION	COLOR
A1	B6	20 AWG UL1061 BLACK DISCRETE WIRE	BLACK
A2	B5		
A3	B4		
A4	B3		
A5	B2		
A6	B1		

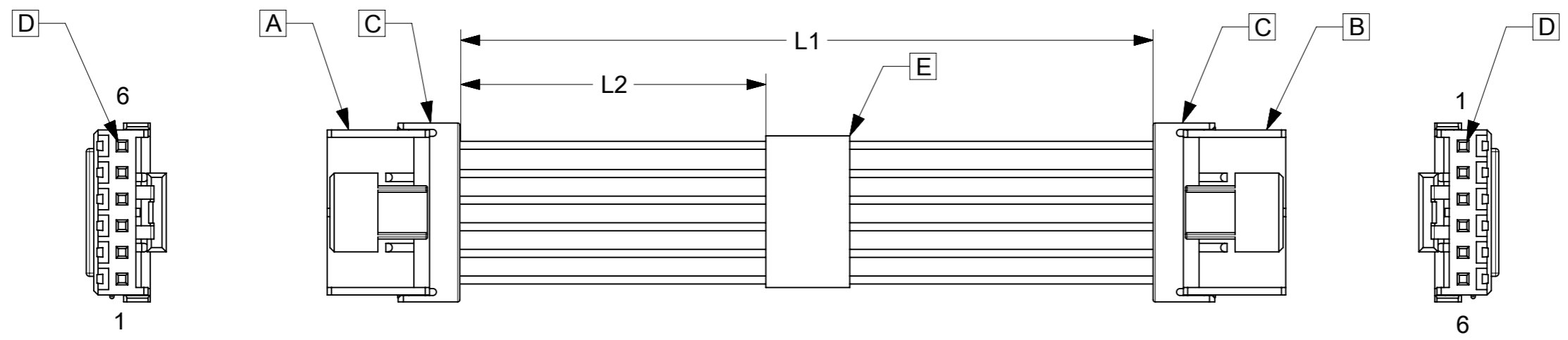
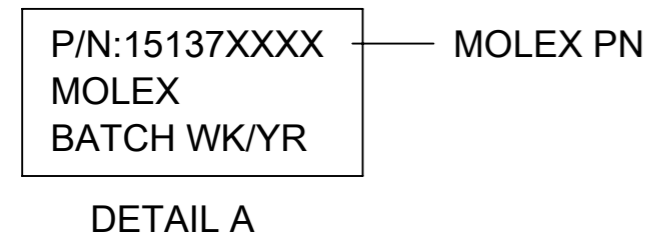


TABLE			
PART NUMBER	L1	L2	TITLE
151370600	50±5	13REF	Mini-Lock 6 Circuit 50MM
151370601	100±8	38REF	Mini-Lock 6 Circuit 100MM
151370602	150±10	63REF	Mini-Lock 6 Circuit 150MM
151370603	300±10	138REF	Mini-Lock 6 Circuit 300MM
151370605	450±15	213REF	Mini-Lock 6 Circuit 450MM
151370606	600±15	288REF	Mini-Lock 6 Circuit 600MM

- NOTES**
1. Cable assembly to be tested 100% for continuity and polarity.
  2. Label text must be 2mm max. In height with Arial font.
  3. Connector view shown is from mating side.



DATE	REV	DESCRIPTION	REVISED BY
2018.05.29	A	INITIAL RELEASE	SSHIVASHANKA
2018.11.14	B	CABLE SIZE CHANGED FROM 22AWG TO 20AWG	SSHIVASHANKA

THIS DRAWING CONTAINS INFORMATION THAT IS PROPRIETARY TO MOLEX ELECTRONIC TECHNOLOGIES, LLC AND SHOULD NOT BE USED WITHOUT WRITTEN PERMISSION

<b>SYMBOLS</b> ▽ = 0 DIMENSION UNITS ▽ = 0 SCALE ▽ = 0 mm NTS ▽ = 0 GENERAL TOLERANCES (UNLESS SPECIFIED) ▽ = 0 ANGULAR TOL ± ° ▽ = 0 4 PLACES ± ▽ = 0 3 PLACES ± ▽ = 0 2 PLACES ± ▽ = 0 1 PLACE ± ▽ = 0 0 PLACES ± ▽ = 0 DRAFT WHERE APPLICABLE MUST REMAIN WITHIN DIMENSIONS ▽ = 0	CURRENT REV DESC: EC NO: 608031 DRWN: SSHIVASHANKA 2018/11/14 CHK'D: MNARAYAN01 2018/11/22 APPR: MNARAYAN01 2018/11/22 INITIAL REVISION: DRWN: SSHIVASHANKA 2018/05/29 APPR: MNARAYAN01 2018/06/05	 SEE TABLE PRODUCT CUSTOMER DRAWING
	THIRD ANGLE PROJECTION 	
DRAFTING: A3-SIZE SERIES: 15137 MATERIAL NUMBER: SEE TABLE CUSTOMER: GENERAL MARKET SHEET NUMBER: 1 OF 1		