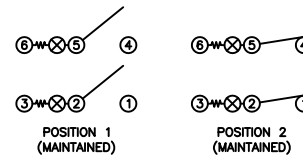


SCHEMATIC



SPECIFICATIONS

FUNCTION:
 Pole 1: 1P1T OFF-ON
 Pole 2: 1P1T OFF-ON

RATINGS:
 ANSI/UL 1054 and CAN/CSA C22.2 No. 55 (E194579):
 16A 125VAC [cURus]
 8A 250VAC [cURus]

EN 61058-1:2002+A2 (SE/09138-1):
 16(4)A 250V~ 1E4 T125/55 [ENEC14]
 16(8)A 250V~ 1E4 T85/55 [ENEC14]

ILLUMINATION VOLTAGE:
 Pole 1: 125V
 Pole 2: 125V

CONTACT RESISTANCE:
 Initial: 35mΩ Max. at 500VAC

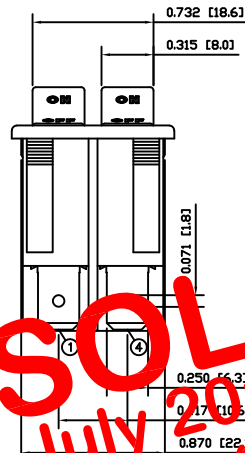
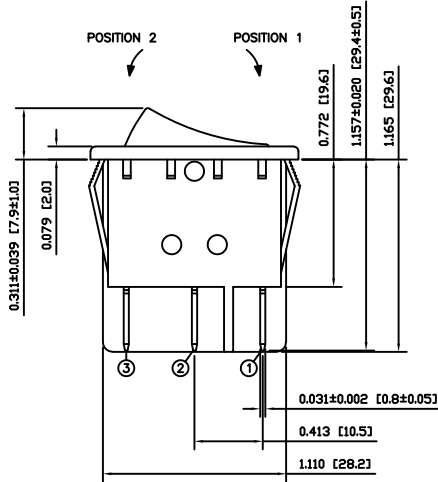
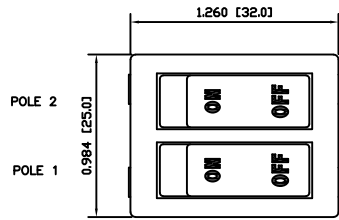
INSULATION RESISTANCE:
 100MΩ Min. at 500VDC

DIELECTRIC STRENGTH:
 1,500VAC For 1 Minute

ELECTRICAL LIFE:
 6,000 Cycles [cURus]
 10,000 Cycles [ENEC14]

TEMPERATURE:
 -20°C to 85°C [cURus]
 -20°C to 125°C [ENEC14]

APPROVALS:



OBSOLETE

July 2018

PCR 23435

COLORS AND MARKINGS

BODY:
 Black

ACTUATOR:
 Pole 1: Transparent Red
 Pole 2: Transparent Red

MARKING:
 Pole 1: ON/OFF Vertical (3)
 Pole 2: ON/OFF Vertical (3)

MARKING COLOR:
 Pole 1: White
 Pole 2: White

MATERIALS

BODY:
 Polyamide 6/6 (PA66), UL94 V-2

ACTUATOR:
 Polycarbonate (PC), UL94 V-2

LAMP CARRIER:
 Polyamide 6/6 (PA66), UL94 V-2

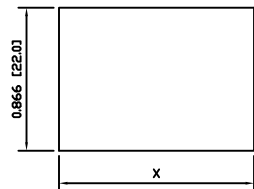
LAMP:
 Neon Bulb

SPRING:
 Piano Wire

CONTACTS:
 Silver Alloy Clad Copper

TERMINALS:
 Silver Plated Copper
 Silver Plated Brass
 Brass

SUGGESTED PANEL CUTOUT



PANEL THICKNESS	X
0.030~0.049 [0.75~1.25]	1.181 [30.0]
0.049~0.079 [1.25~2.00]	1.189 [30.2]
0.079~0.118 [2.00~3.00]	1.200 [30.5]

ACTUATOR	A	09/10/09	CAB
BODY	A	09/10/09	CAB
COLORS	A	10/05/24	CAB
MATERIALS	A	09/10/09	CAB
SPECIFICATIONS	A	09/10/09	CAB
REFERENCE	REV.	DATE	BY

THE INFORMATION CONTAINED IN THIS DOCUMENT IS PROPRIETARY TO E-SWITCH AND IS NOT TO BE COPIED OR TRANSFERRED

B	CHANGED VDE APPROVAL TO SEMKO APPROVAL	18893	11/05/04	CAB
A	INITIAL RELEASE	19085	10/05/24	CAB
REV.	DESCRIPTION	PCR	DATE	DRAWN BY

DIMENSIONS	
INCHES [MILLIMETERS]	
GENERAL TOLERANCES	
±0.008 [±0.2] / ±1'	
SCALE	PROJECTION
DRAWING NOT TO SCALE	1st Angle

RB441C1023-116

ITEM NUMBER 38-RB441C1023116	DATE MAY 4, 2011	REVISION B
---------------------------------	---------------------	---------------