

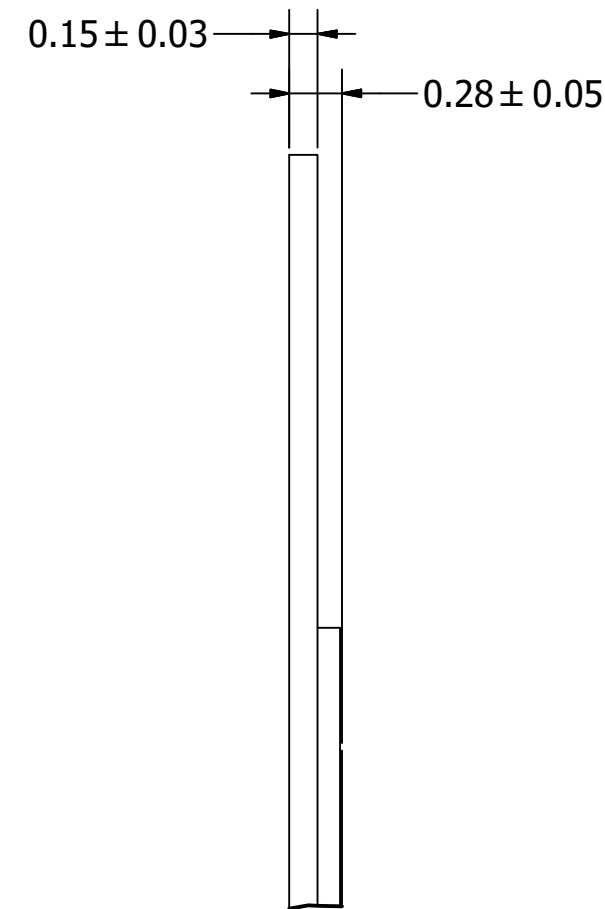
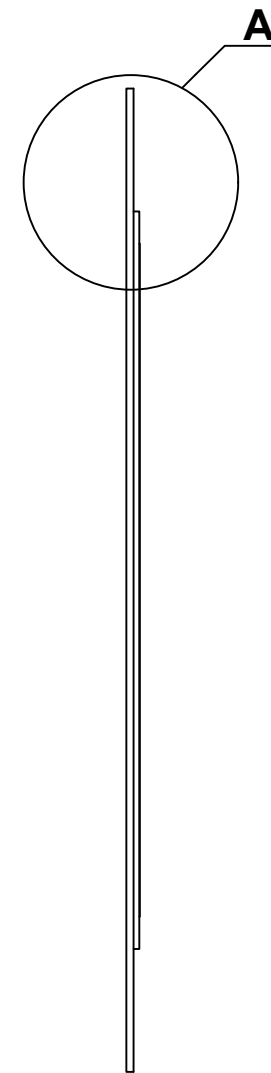
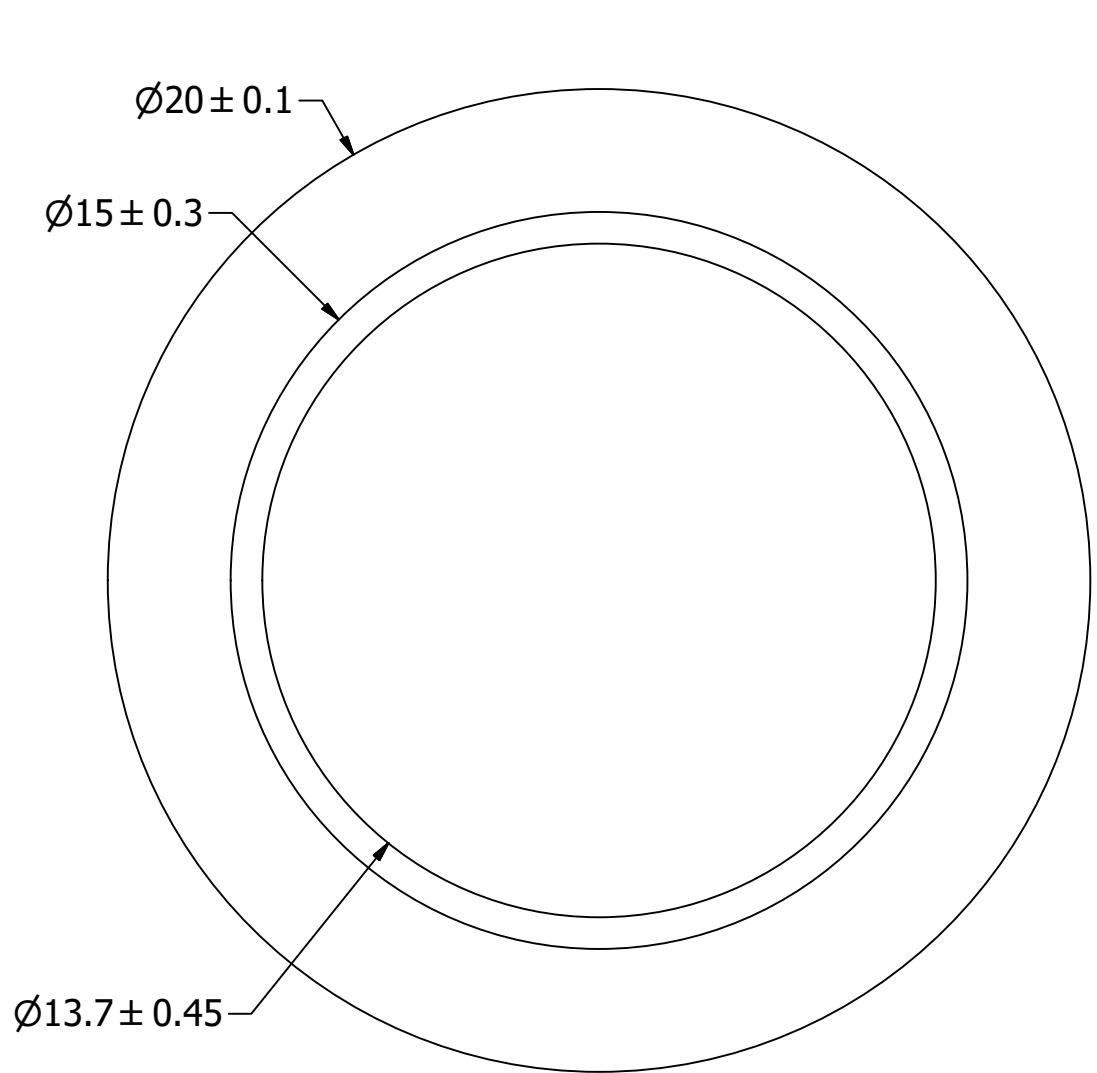
SPECIFICATIONS

PARAMETERS	VALUES	UNITS
RESONANT FREQUENCY	4,000 ± 500	Hz
RESONANT IMPEDANCE (MAX)	350	Ohm
MAX INPUT VOLTAGE	30	Vp-p
CAPACITANCE @ 100 HZ	25,000 ±30%	pF
PLATE MATERIAL	BRASS	-
OPERATING TEMPERATURE	-20 ~ +60	°C
STORAGE TEMPERATURE	-20 ~ +70	°C

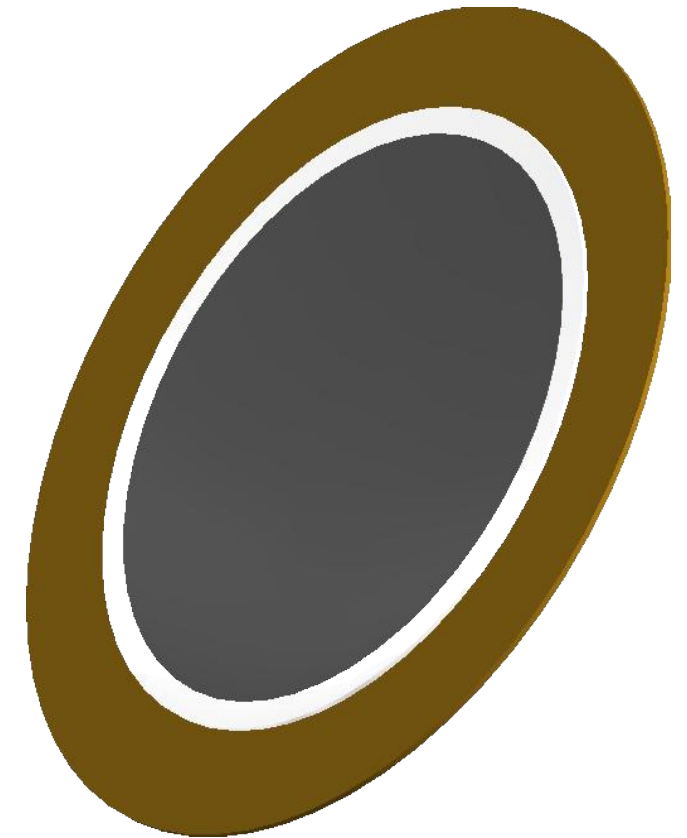
THIS DOCUMENT CONTAINS DATA PROPRIETARY TO PROJECTS UNLIMITED, INC. ANY USE OR REPRODUCTION, IN ANY FORM, WITHOUT PRIOR WRITTEN PERMISSION OF PROJECTS UNLIMITED, INC. IS PROHIBITED.
©2003, Projects Unlimited Inc.

REVISION HISTORY

LTR	DESCRIPTION	DATE	APPROVED
-	RELEASED FROM ENGINEERING	11/6/2001	
A	REVISED TO NEW TEMPLATE	9/4/2003	R.W.
B	ADDED DIMENSION AND TOLERANCES	1/7/2004	R.W.
C	REVISED SPECIFICATIONS	1/12/2004	R.W.
D	REVISED DIMENSION	1/28/2004	R.W.
E	REVISED DIMENSION	8/31/2004	R.W.
F	REVISED CAP. SPEC. FROM 1 KHz TO 100 Hz & THICKNESS TOL. FROM .02 TO .03	8/8/2005	R.W.
G	REVISED DIMENSION SIZE AND STYLE	12/21/2005	B.R.
H	REVISED TO INVENTOR 3-D DRAWING TEMPLATE	8/11/2010	B.R.

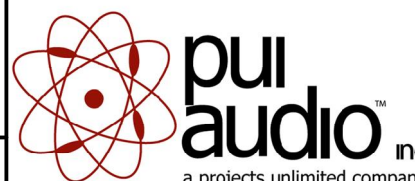


A (25 : 1)



NOTES:

1. ALL DIMENSIONS ARE IN MILLIMETERS.
2. SPECIFICATIONS SUBJECT TO CHANGE OR WITHDRAWL WITHOUT NOTICE.
3. THIS PART IS RoHS 2002/95/EC COMPLIANT.

UNLESS OTHERWISE SPECIFIED: DIMENSIONS ARE IN MILLIMETERS, TOLERANCES ARE ±0.5 AND ANGLES ARE ±3°.	SIZE A3	Designed by	Date	Checked by	Date	Approved by	Date	Drawn Date	
		B.C.	5/28/2003			S.J.	5/30/2003	8/10/2010	
AB2040B.idw				AB2040B					
		Bender				Edition		Sheet	
						-		1 / 1	