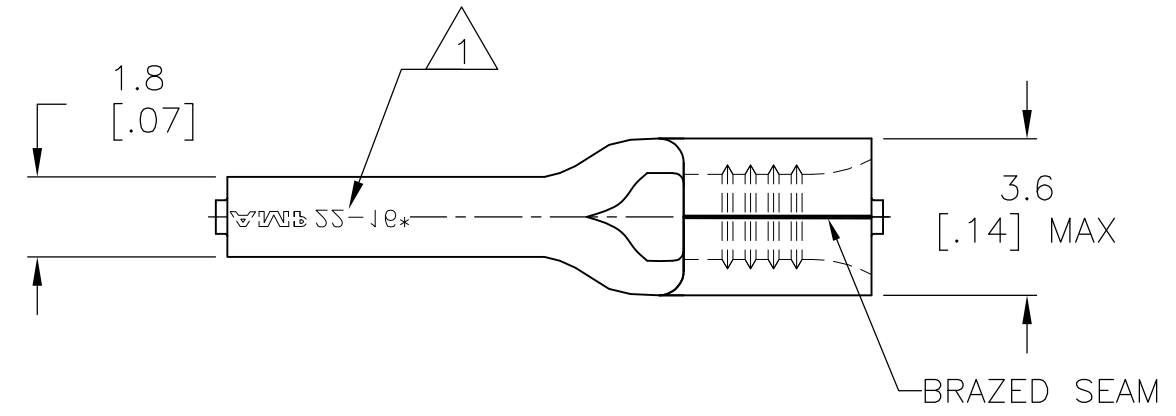


THIS DRAWING IS UNPUBLISHED. RELEASED FOR PUBLICATION
 © COPYRIGHT - By - ALL RIGHTS RESERVED.

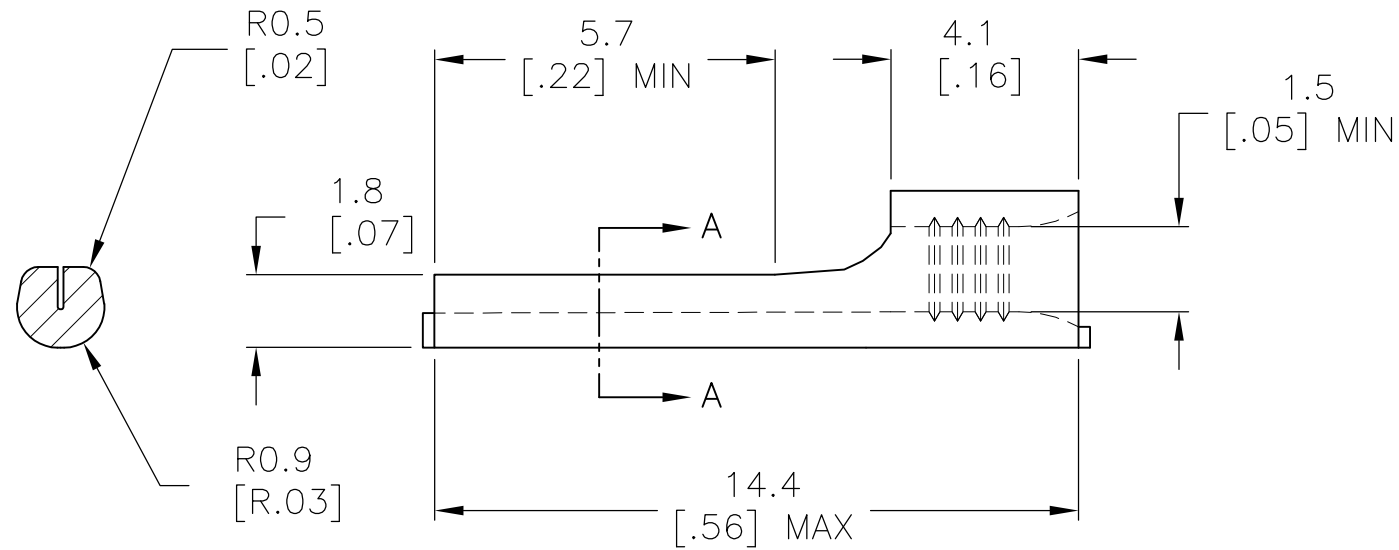
LOC	DIST	REVISIONS			
P	LTR	DESCRIPTION	DATE	DWN	APVD
G	86	A1	REVISED PER ECO-14-003208	19MAR2014	NK DR

AMP
WIRE RANGE

22-16 AWG
SOLID OR STRANDED



- 1 STAMP AMP 22-16* APPROX AS SHOWN
- 2 MAX RECOMMENDED OPERATING TEMPERATURE 170°C [338°F]



SECTION A-A

1000	LOOSE PIECE	165140
QTY	PACKAGE TYPE	PART NO

THIS DRAWING IS A CONTROLLED DOCUMENT.		DWN JR RUTH 12AUG10	STE TE Connectivity		
DIMENSIONS: mm [INCHES]		CHK TOM MICHIELUTTI 12AUG10			
TOLERANCES UNLESS OTHERWISE SPECIFIED:		APVD TOM MICHIELUTTI 12AUG10	NAME TERMINAL, WIRE PIN, SOLISTRAND, WIRE SIZE, 22-16 AWG		
0 PLC ± -		PRODUCT SPEC	-		
1 PLC ± 0.20 [.007]		APPLICATION SPEC	-		
2 PLC ± -		WEIGHT	-		
3 PLC ± -		SIZE	CAGE CODE	DRAWING NO	RESTRICTED TO
4 PLC ± -		A3 00779		C-165140	-
ANGLES ± -		CUSTOMER DRAWING			
MATERIAL COPPER PER ASTM B152	FINISH TIN PLATE PER ASTM B545	SCALE 6:1		SHEET 1 OF 1	REV A1