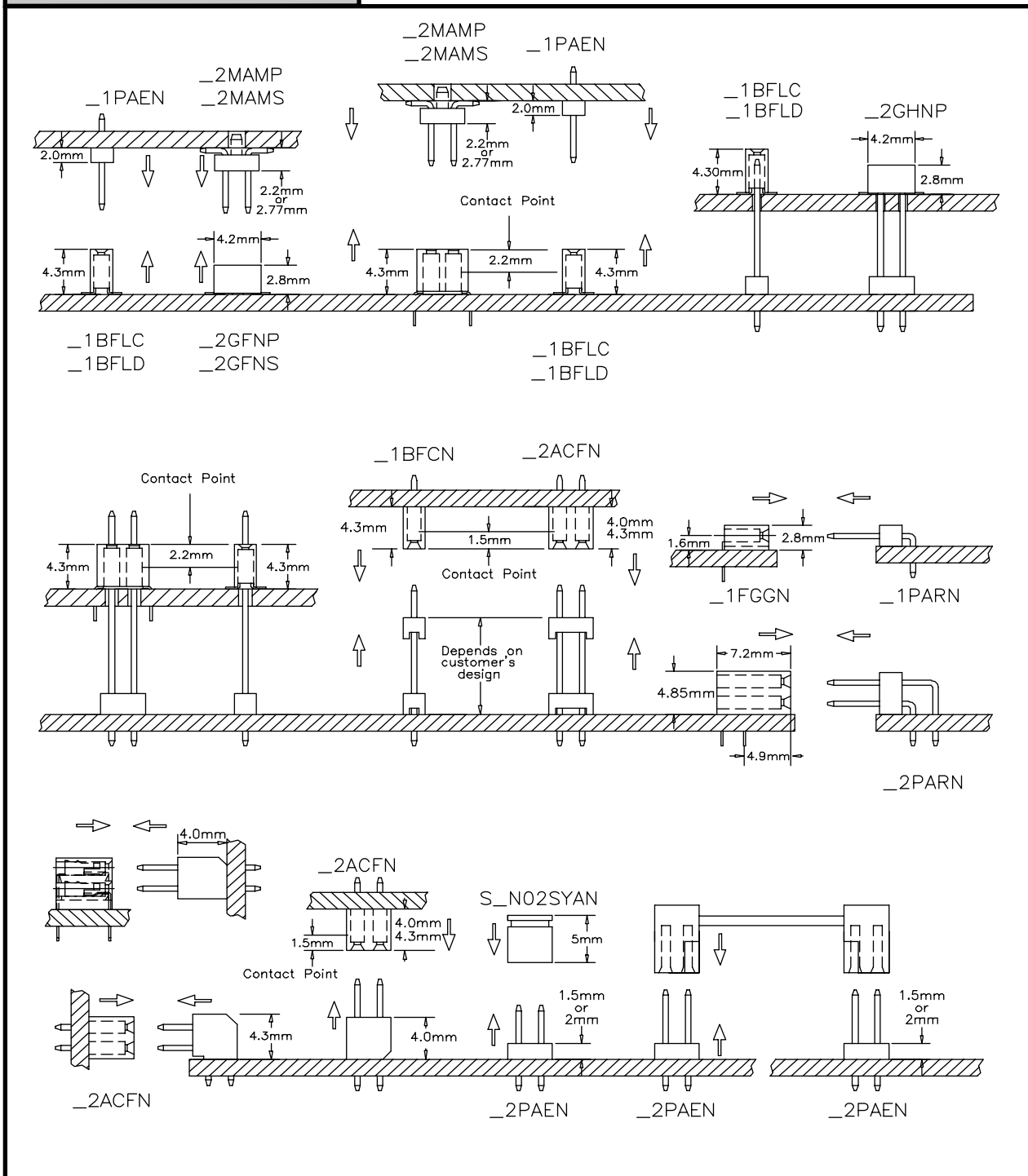


2mm X 2mm SQUARE POST HEADER

SELECTION GUIDE



See opposite page for full part numbers.

Series numbers noted on above drawings are the last 5 positions in the part number.

Contact Sullins Electronics for additional information on parts without a series number noted.

2mm X 2mm SQUARE POST HEADER

PART NUMBER CODING

PLASTIC HOUSING ———— P P P
 P = Header, Thermoplastic

CONTACTS ———— P P
 P = Phosphor Bronze (With Female Only)
 R = Brass (With Male Only)

PLATING ———— P N

Contact	Termination
P = Gold Flash	Gold Flash
R = .000020 GOLD	.00010 TIN (4 Row Only)

CONTACT CENTERS ———— 40 2
 N = 2mm

NUMBER OF POSITIONS ———— N
 02 to 40

NUMBER OF ROWS ———— ABC
 1 = 1 Row
 2 = 2 Rows
 4 = 4 Rows

SPECIAL MODIFICATION
 (Consult Factory) Omit for Standard

MOUNTING STYLE
 C = SMT, Single Row Pin 1 Left
 D = SMT, Single Row Pin 1 Right
 N = No Mounting
 P = Surface Mount with Guide Pins
 S = Surface Mount without Guide Pins

TERMINATION TYPE

P/N CODE	GENDER	TERMINATION	ROWS	ENTRY
PAE	MALE	STRAIGHT	1 OR 2	N/A
RCC	MALE	STRAIGHT	4	N/A
PAR	MALE	RIGHT ANGLE	1 OR 2	N/A
MAM	MALE	SMT	2	N/A
BFC	FEMALE	STRAIGHT	1	TOP
AFC	FEMALE	STRAIGHT	2	TOP
EFC	FEMALE	STRAIGHT	4	TOP
FGG	FEMALE	RIGHT ANGLE	1	TOP
FJF	FEMALE	RIGHT ANGLE	2	TOP
BFL	FEMALE	SMT	1	TOP
GFN	FEMALE	SMT	2	TOP
GHN	FEMALE	SMT	2	BOTTOM
FFK	FEMALE	SMT	2	TOP