



## Analog Rotation Sensor V1 (SKU: DFR0054)

From Robot Wiki



### Contents

- 1 Introduction
- 2 Specification
- 3 Pin Definition
- 4 Connection Diagram
- 5 Sample Code

### Introduction

Analog Rotation Sensor V1 (SKU: DFR0054)

The *DFRobot Rotation Sensor V1* is arduino compatible and can be rotated upto 300-degree. It is based on the potentiometer. With the Arduino sensor expansion board, in combination, it can be very easy to achieve position-dependent interaction with the rotating effect or produce MIDI instrument.

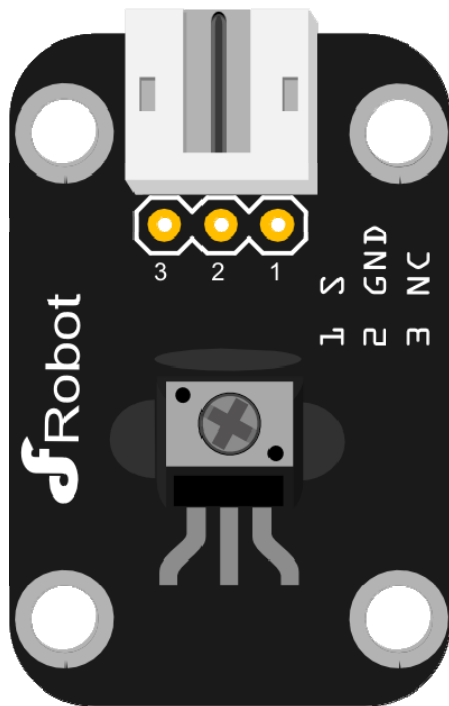
## Specification

- Interface type: Analog
- 300 degree rotation sensor

## Pin Definition

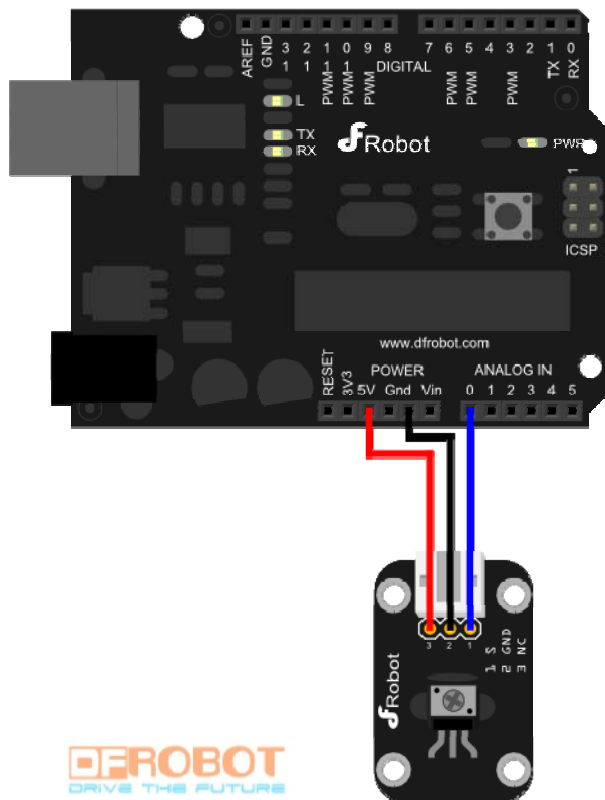
The definition of gas sensor pin is

1. Signal Output
2. GND
3. Power



Analog Sensor Pin Definition

## Connection Diagram



Analog sensor connection diagram

## Sample Code

```
// # Editor      : Lauren from DFRobot
// # Date        : 30.12.2011

// #
// # Editor      : Lauren from DFRobot
// # Date        : 17.01.2012
```

```
// # Product name: Rotation Sensor v1/v2 or Analog Slide Position Sensor
// # Product SKU : DFR0054/DFR0058/DFR0053
// # Version      : 1.0

// # Description:
// # the sample to drive some analog sensors

// # Connection:
// #           Signal output pin  -> Analog pin 0
// #

void setup()
{
  Serial.begin(9600);    //Set serial baud rate to 9600 bps
}
void loop()
{
  int val;
  val=analogRead(0);    //Read slider value from analog 0
  Serial.println(val,DEC); //Print the value to serial port
  delay(100);
}
```