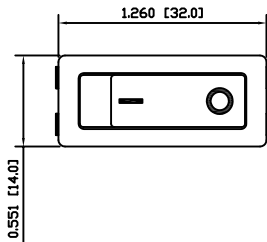
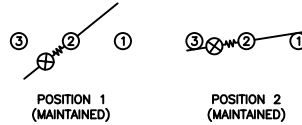


SHEET 1 OF 1



**SCHEMATIC**



**SPECIFICATIONS**

**FUNCTION:**  
1P1T OFF-ON

**RATINGS:**  
ANSI/UL 1054 and CAN/CSA C22.2 No. 55 (E194579):  
20A 125VAC [cURus]  
16A 250VAC [cURus]  
3/4HP 125/250VAC [cURus]

ANSI/UL 1054 (233821):  
16A 250VAC [CSAus]  
3/4HP 125/250VAC [CSAus]

EN 61058-1:2002 and DIN/VDE 0630:2003-03 (40017926):  
16(4)A 250V~ 1E4 μ T85/55 [ENEC10, VDE]  
10(2)A 250V~ 5E4 μ T85/55 [ENEC10, VDE]  
20(8)A 250V~ 1E4 μ T125/55 [ENEC10, VDE]

**ILLUMINATION VOLTAGE:**  
125V

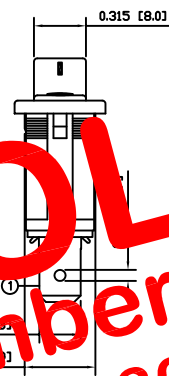
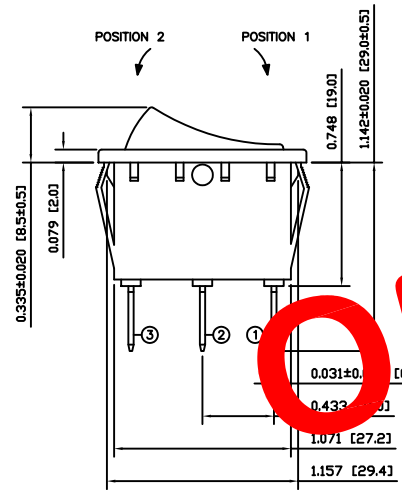
**CONTACT RESISTANCE:**  
Initial: 20mΩ Max.

**INSULATION RESISTANCE:**  
100MΩ Min. at 500VDC

**DIELECTRIC STRENGTH:**  
1,000VAC for 1 Minute

**ELECTRICAL LIFE:**  
6,000 Cycles [cURus, CSAus]  
10,000 Cycles [ENEC10, VDE: 16(4)A 250V~]  
50,000 Cycles [ENEC10, VDE: 10(2)A 250V~]

**TEMPERATURE:**  
Operating: -20°C to 65°C [cURus, CSAus]  
Operating: -20°C to 125°C [ENEC10, VDE]  
Operating: -20°C to 85°C [ENEC10, VDE]



**OBSOLETE**  
November 2017  
PCR 23093

**COLORS AND MARKINGS**

**BODY:**  
Black

**ACTUATOR:**  
Transparent Red

**MARKINGS:**  
I/O Vertical (1)

**MARKING COLOR:**  
White

**MATERIALS**

**BODY:**  
Polyamide 6/6 (PA66), UL94 V-2

**ACTUATOR:**  
Polycarbonate (PC), UL94 V-2

**LAMP CARRIER:**  
Polyamide 6/6 (PA66), UL94 V-2

**LAMP:**  
Neon Bulb

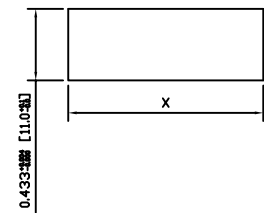
**LAMP SPRING:**  
Steel

**SPRING:**  
Steel

**CONTACTS:**  
Silver Plated Copper

**TERMINALS:**  
Silver Plated Copper  
Silver Plated Brass

**SUGGESTED PANEL CUTOUT**



PANEL THICKNESS		X
0.030~0.049	[0.75~1.25]	1.181 [30.0]
0.049~0.079	[1.25~2.00]	1.189 [30.2]
0.079~0.118	[2.00~3.00]	1.201 [30.5]

	A	REV.	DATE	BY
ACTUATOR	A	09/06/26	CAB	
BODY	A	09/06/26	CAB	
COLORS	A	09/06/26	CAB	
MATERIALS	A	09/06/26	CAB	
SPECIFICATIONS	A	09/06/26	CAB	
REFERENCE				

THE INFORMATION CONTAINED IN THIS DOCUMENT IS PROPRIETARY TO E-SWITCH AND IS NOT TO BE COPIED OR TRANSFERRED.

A	REV.	DESCRIPTION	INITIAL RELEASE	19315	10/09/22	CAB
				PCR	DATE	DRAWN BY

DIMENSIONS		TITLE	
INCHES [MILLIMETERS]		E-SWITCH	LAMB INDUSTRIES
GENERAL TOLERANCES		RB141D1021-116	
±0.008 [±0.2] / ±1'			
SCALE	DRAWING NOT TO SCALE	ITEM NUMBER	14-RB141D1021116
PROJECTION		DATE	SEPTEMBER 22, 2010
REVISION		REVISION	A