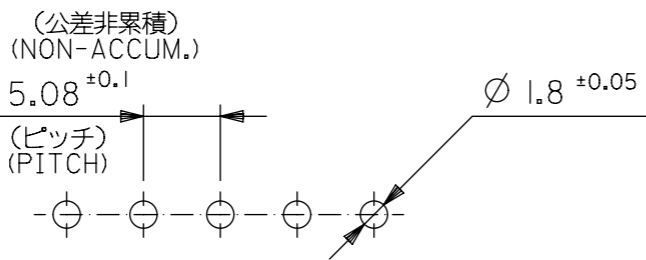
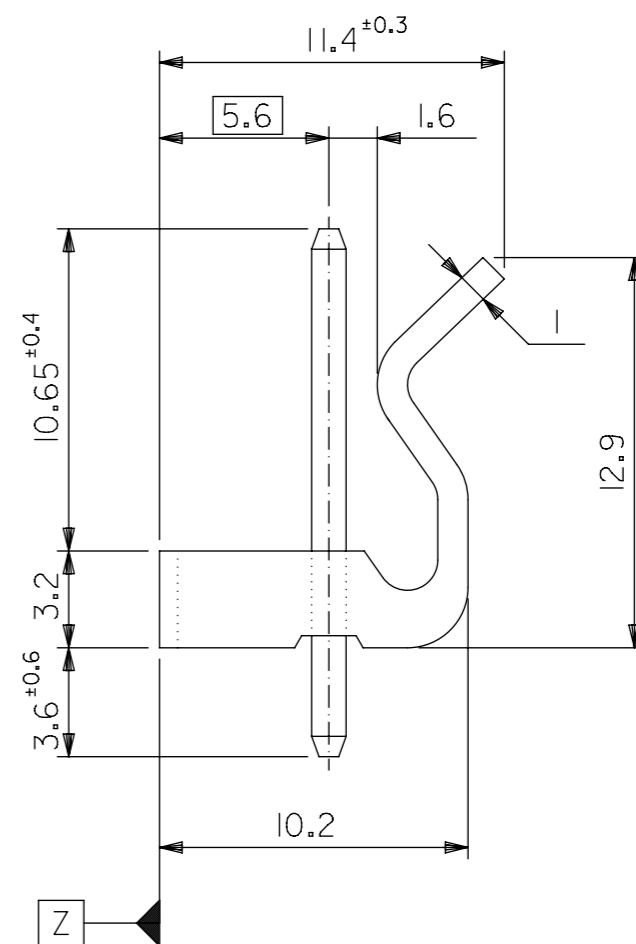
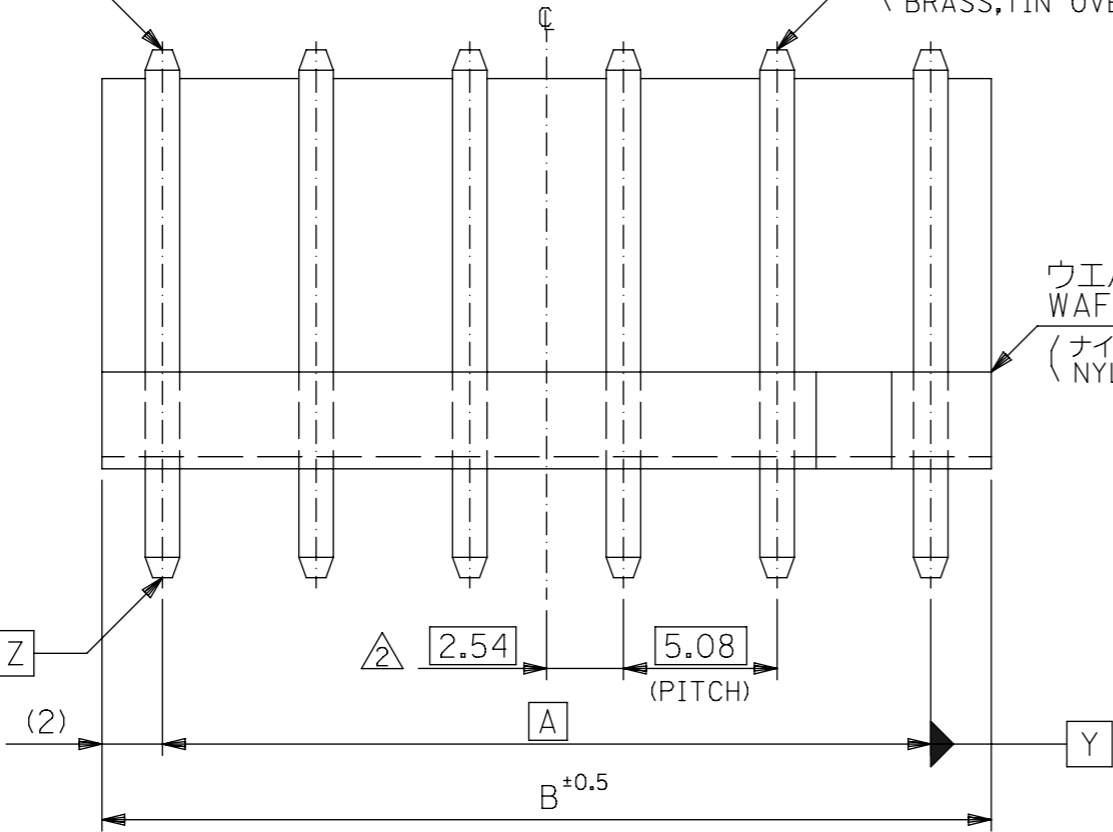


⊕ ∅ 0.6 Y Z

ピン (□1.14X17.45)  
PIN  
(黄銅, 銅下地錫メッキ  
BRASS, TIN OVER COPPER PLATING)

ウエハー  
WAFER  
(ナイロン66, UL94V-2  
NYLON66)

⊕ ∅ 0.6 Y Z



基板取付穴推奨寸法  
RECOMMENDED P.C.B.HOLE DIMENSION

注記  
NOTE

- 1 ウエハーのそりは、長さ 25.4 に対して0.24 MAX..  
CAMBER MUST BE 0.24 MAX. PER 25.4
- △ 全極数が偶数の場合のみ適用。  
TO BE APPLIED ONLY WHEN ALL CKTS. ARE EVEN.

44.64	40.64	▲ -109I	▲ -09A	9
34.48	30.48	-107I	-07A	7
29.4	25.4	-106I	-06A	6
24.32	20.32	-105I	-05A	5
19.24	15.24	-104I	-04A	4
14.16	10.16	▼ -103I	▼ -03A	3
9.08	5.08	10-32-102I	5281-02A	2
B	A	EDP NO.	ENG. NO.	極数 NO. OF CKTS.

THIS DRAWING CONTAINS INFORMATION THAT IS PROPRIETARY TO MOLEX ELECTRONIC TECHNOLOGIES, LLC AND SHOULD NOT BE USED WITHOUT WRITTEN PERMISSION

DIMENSION UNITS	SCALE	CURRENT REV DESC: REMOVED OBSOLETE PART NUMBER AS PER PCN#509989.		
mm	4:1	<b>molex</b>		
GENERAL TOLERANCES (UNLESS SPECIFIED)				
		PRODUCT CUSTOMER DRAWING		
4 PLACES ±	±	EC NO: 708673	DOCUMENT NUMBER	
3 PLACES ±	±	DRWN: SANTHN	SD-5281-001	DOC TYPE DOC PART REVISION
2 PLACES ±	±	CHK'D: GGA	PSD	001 J1
1 PLACE ±	±	APPR: GGA	SHEET NUMBER	
0 PLACES ±	±	INITIAL REVISION:	1 OF 1	
		DRWN: TYAJIMA01		
		APPR: NUKITA		
		ANGULAR TOL ± 1.0°		
DRAFT WHERE APPLICABLE MUST REMAIN WITHIN DIMENSIONS		THIRD ANGLE PROJECTION	DRAWING	SERIES
			A3-SIZE	5281
		MATERIAL NUMBER	CUSTOMER	
		SEE TABLE	GENERAL MARKET	

GENERAL TOLERANCES (UNLESS SPECIFIED)

10 UNDER	±0.15
10 OVER 30 UNDER	---
30 OVER	---