



### Electrical Specifications

**Center Frequency:** 2800 MHz  
**Bandwidth:** Fo ±400 MHz Min  
**Passband:** 2400-3200 MHz  
**Insertion Loss in BW:** 2.0 dB Max  
**Ripple in BW:** 1.0 dB Min  
**VSWR:** 2.1:1 Max  
**Attenuation:** >50 dB @ DC~700 MHz  
>30 dB @ 700~1400 MHz  
>30 dB @ 3800 MHz  
**Impedance:** 50 Ω  
**Input Power:** 1 Watt Typical

### Mechanical

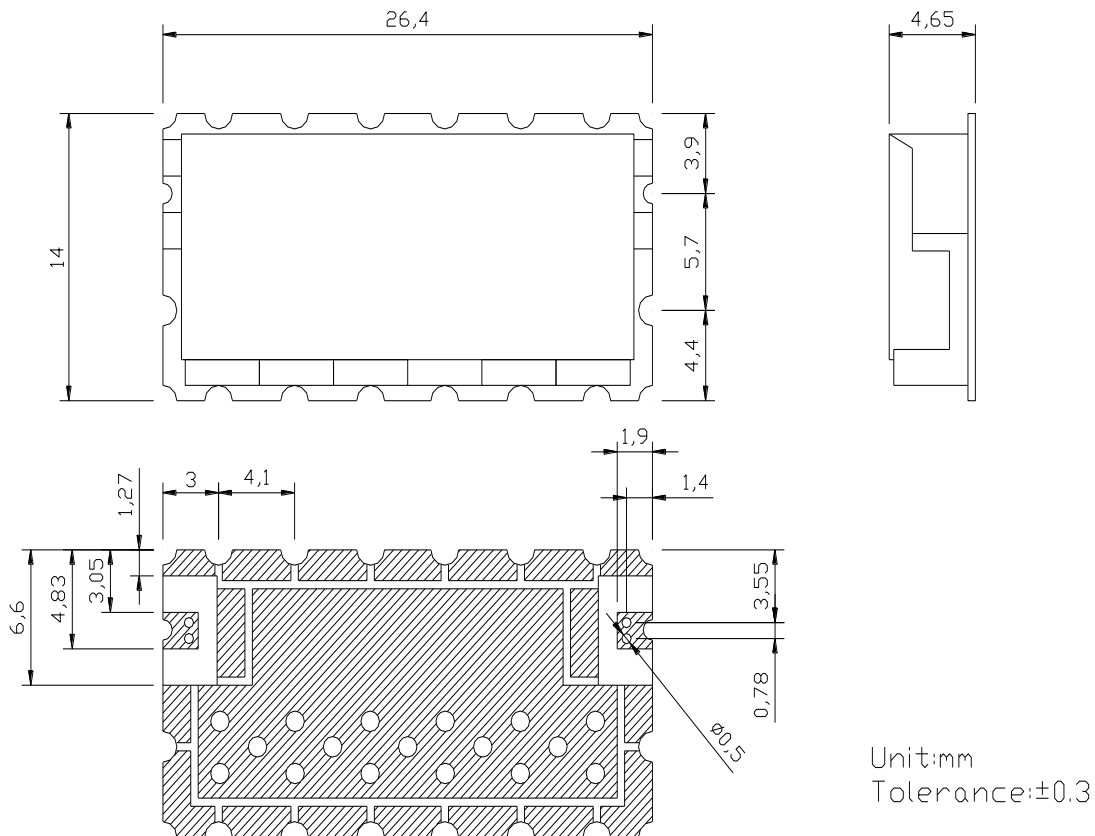
**Mounting Method:** SMT  
**Dimensions:** 26.4 x 14 x 4.65 mm

### Environmental

**Operating Temperature:** -40 to +85° C  
**Storage Temperature:** -50 to +95° C

This product is RoHS compliant.

### Outline Drawing:



Unit:mm  
Tolerance:±0.3