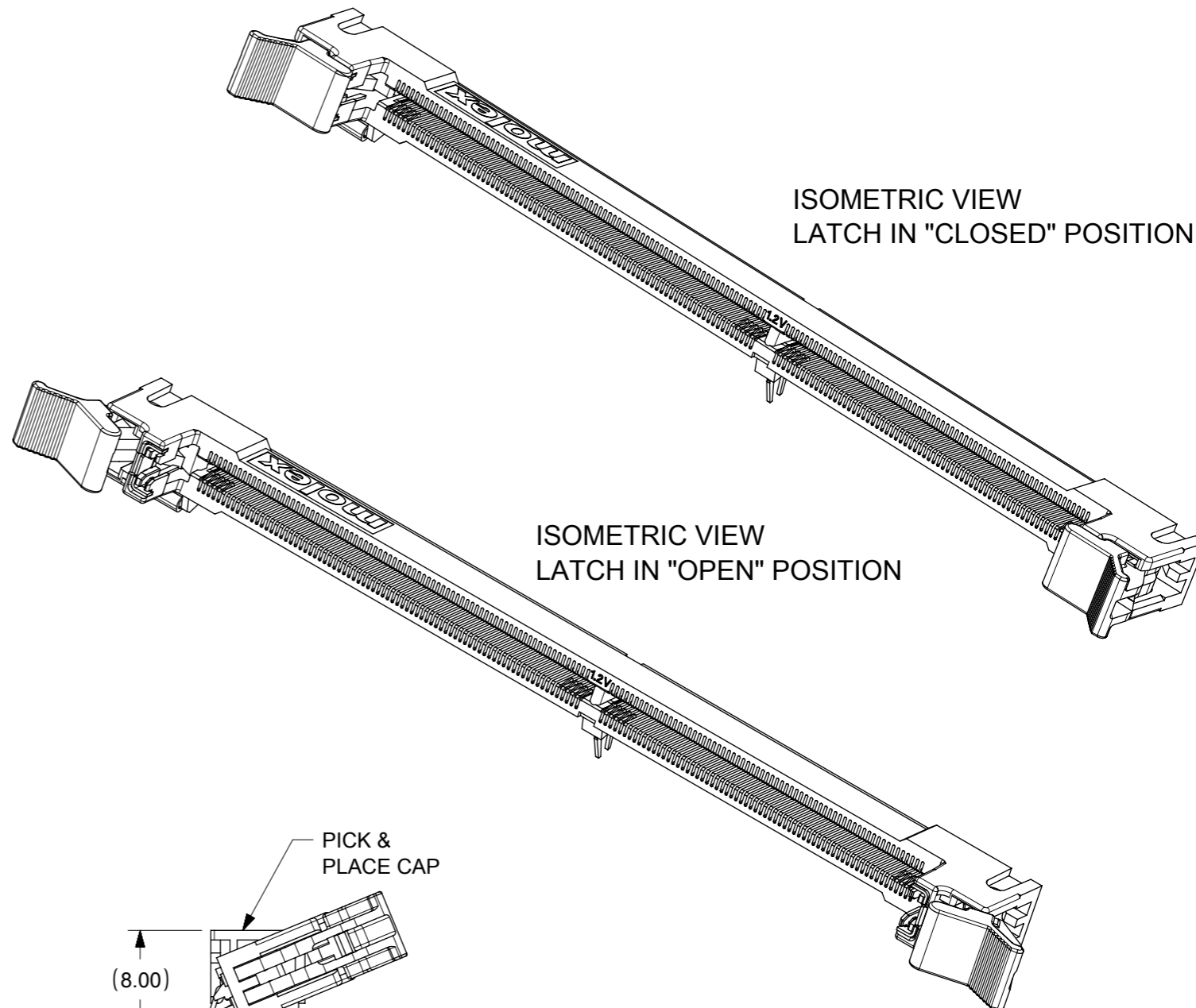
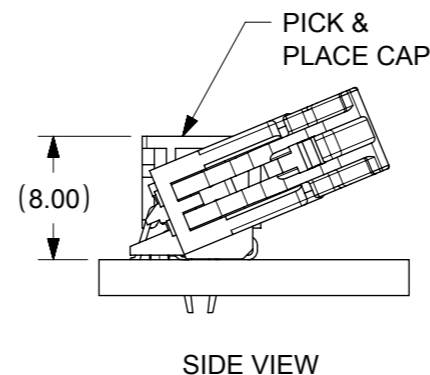
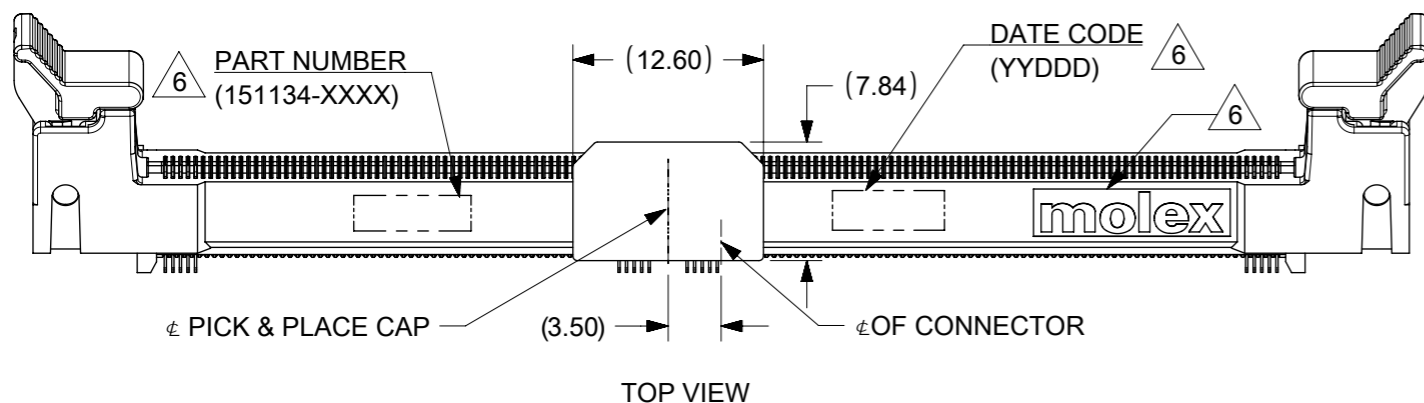


NOTES:

1. MATERIALS
HOUSING - LIQUID CRYSTAL POLYMER (LCP), GLASS FILLED, UL94 V-0;
COLOR: BLACK
LATCH - POLYAMIDE (PA), GLASS FILLED, UL94 V-0;
COLOR: NATURAL (OFF-WHITE)
TERMINAL - COPPER ALLOY
PCB HOLD-DOWN FEATURES - COPPER ALLOY
2. FINISHES
CONTACT AREA - 0.76 MICROMETER (30 MICROINCH) MINIMUM GOLD OVER
1.25 MICROMETER (50 MICROINCH) MINIMUM NICKEL
SMT TAIL - 2.54 MICROMETER (100 MICROINCH) MINIMUM TIN OVER
1.25 MICROMETER (50 MICROINCH) MINIMUM NICKEL
PCB HOLD-DOWN FEATURES - 2.54 MICROMETER (100 MICROINCH) MINIMUM TIN OVER
1.25 MICROMETER (50 MICROINCH) MINIMUM NICKEL
3. PRODUCT SPECIFICATION: SEE TABLE
4. PACKAGING SPECIFICATION: SEE TABLE
5. CARD SLOT ACCEPTS 1.40±0.10mm MODULE THICKNESS
(MEASURED OVER P.C. PADS).
6. MOLEX LOGO, DATE & PART NO. INDICATED ON SIDE OF HOUSING
7. MODULE SEATING PLANE FROM TOP OF PCB.
8. KEEP-OUT ZONE FOR LATCH
9. KEEP-OUT AREA IS THE AREA WHERE THE CONNECTOR IS MOUNTED
ONTO THE PCB (INCLUDING LATCH IN THE OPEN POSITION).
10. CONNECTOR APPLICATION GUIDELINE: AS-151134-0001.
11. PCB ROUTING RECOMMENDATION: AS-151134-0002.

CONNECTOR WITH PICK & PLACE CAP



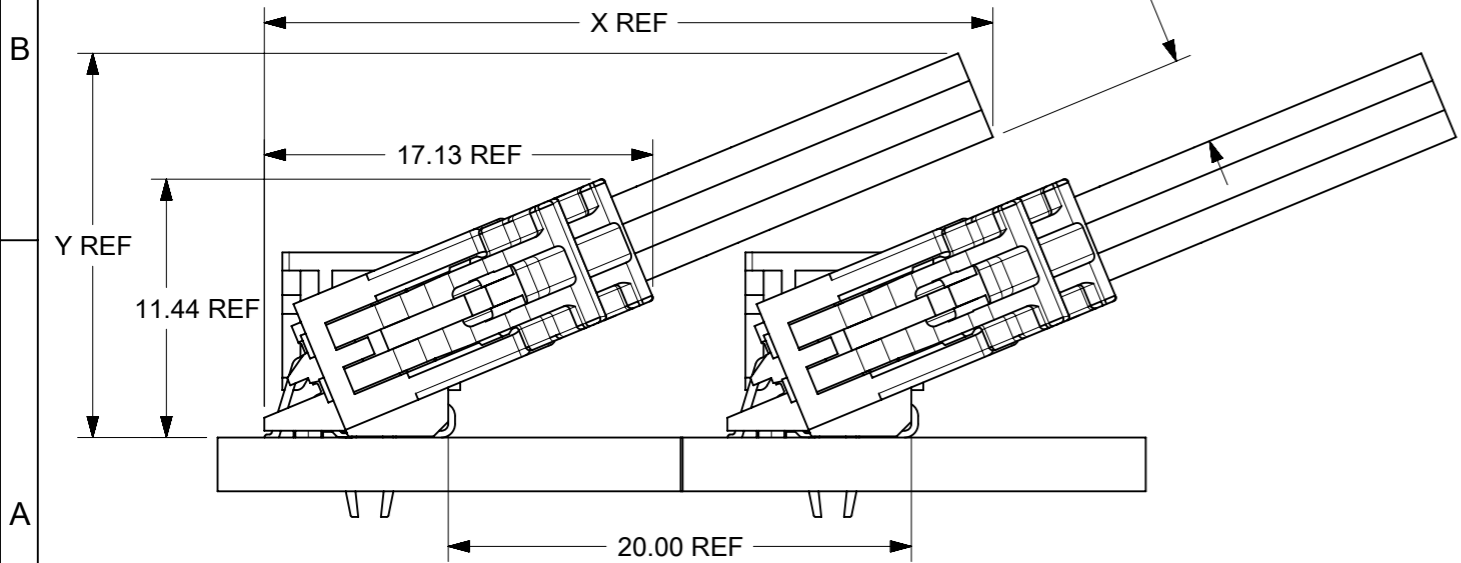
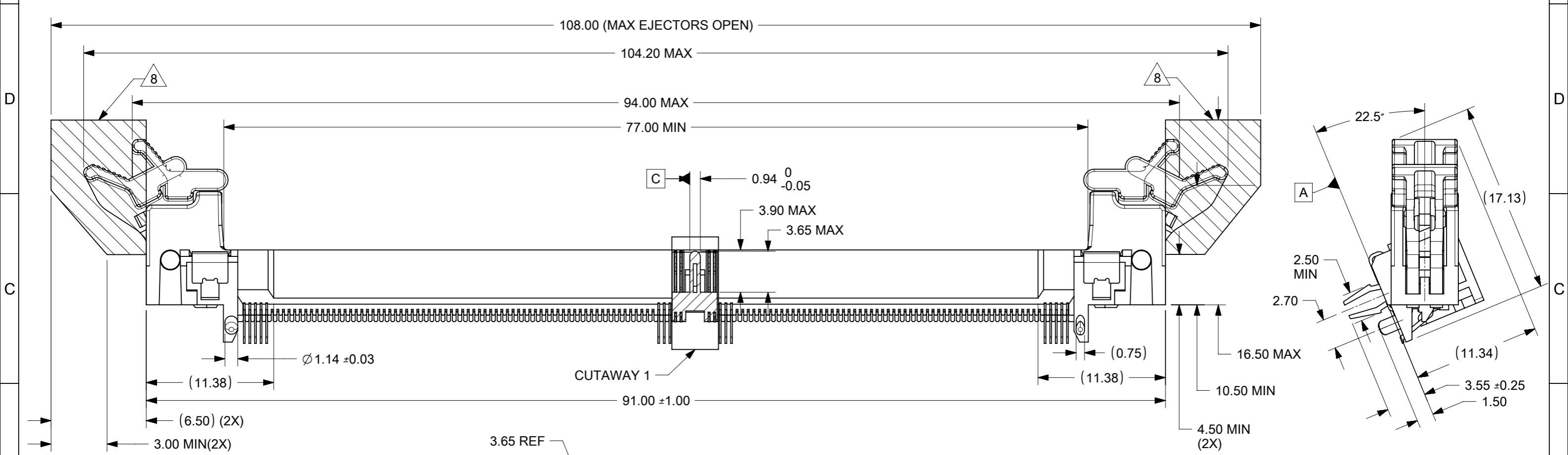
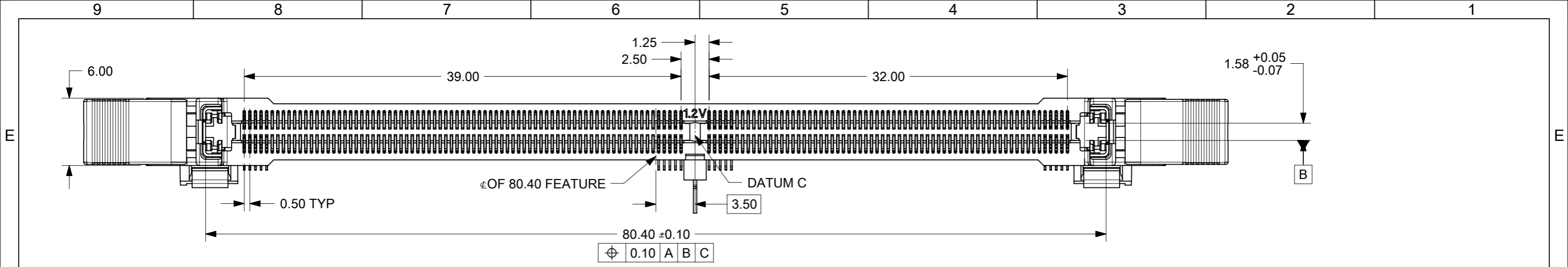
THIS DESIGN IS BASED ON DESIGN OBJECTIVES AND IS STRICTLY TENTATIVE. IT MAY CHANGE BASED ON RESULTS OF ADDITIONAL DESIGN REVIEWS AND VERIFICATIONS.

THIS DRAWING CONTAINS INFORMATION THAT IS PROPRIETARY TO MOLEX ELECTRONIC TECHNOLOGIES, LLC AND SHOULD NOT BE USED WITHOUT WRITTEN PERMISSION

ASSEMBLY PART NUMBER	PICK & PLACE CAP	PRODUCT SPECIFICATION	PACKAGING SPECIFICATION
151134-0001	NO	PS-151134-0001	PK-151134-0001
151134-0003	YES		

UPDATE P&P/GRIPPER EC NO: 116294 DRWN: EKSOH CHK'D: EKSOH REV APPR: SHLENI	2017/04/27	GENERAL TOLERANCES (UNLESS SPECIFIED)	DIMENSION UNITS	SCALE			
	2017/04/28		MM	NTS			
	2017/05/23		ANGULAR TOL ± 3.0 °			DRWN BY	DATE
	REV		4 PLACES ±	EKSOH		2015/09/28	
			3 PLACES ±	CHK'D BY		DATE	
2 PLACES ± 0.2		EKSOH	2015/09/28				
1 PLACE ±		APPR BY	DATE				
B1	SHLENI	2016/07/19	DRAWING SIZE	THIRD ANGLE PROJECTION	SERIES: 151134 MATERIAL NUMBER: SEE TABLE CUSTOMER: GENERAL MARKET		
DRAFT WHERE APPLICABLE MUST REMAIN WITHIN DIMENSIONS		A3			DOCUMENT NUMBER: SD-151134-0001 DOC TYPE: PSD DOC PART: 000 SHEET NUMBER: 1 OF 4		

RELEASE STATUS	RELEASE DATE
----------------	--------------

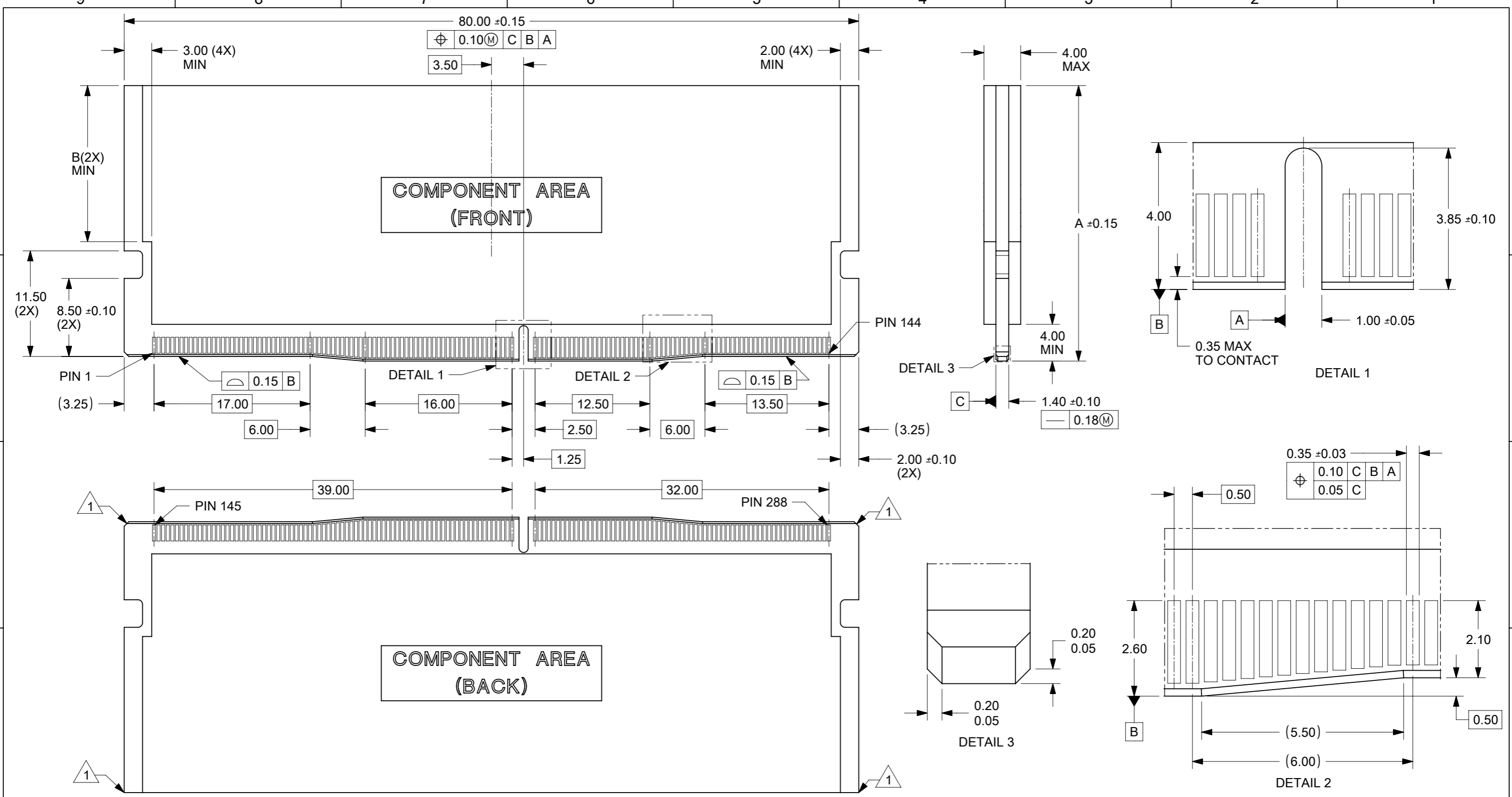


TYPE OF MODULE CARD	X	Y
STANDARD	32.12	16.98
VLP	21.72	12.68

RELEASE STATUS	RELEASE DATE

THIS DRAWING CONTAINS INFORMATION THAT IS PROPRIETARY TO MOLEX ELECTRONIC TECHNOLOGIES, LLC AND SHOULD NOT BE USED WITHOUT WRITTEN PERMISSION

UPDATE P&P/GRIPPER EC NO: 116294 DRWN: EKSOH CHK'D: EKSOH APPR: SHLENI	2017/04/27	GENERAL TOLERANCES (UNLESS SPECIFIED) ANGULAR TOL ± 3.0 ° 4 PLACES ± 3 PLACES ± 2 PLACES ± 0.2 1 PLACE ± 0 PLACES ± DRAFT WHERE APPLICABLE MUST REMAIN WITHIN DIMENSIONS	DIMENSION UNITS	SCALE		
	2017/04/28		MM	NTS		
	2017/05/23		DRWN BY	DATE		EKSOH 2015/09/28
			CHK'D BY	DATE		EKSOH 2015/09/28
			APPR BY	DATE		SHLENI 2016/07/19
		DRAWING SIZE	THIRD ANGLE PROJECTION	PRODUCT CUSTOMER DRAWING SERIES: 151134 MATERIAL NUMBER: SEE TABLE CUSTOMER: GENERAL MARKET		
		A3		DOCUMENT NUMBER: SD-151134-0001 DOC TYPE: PSD DOC PART: 000 SHEET NUMBER: 2 OF 4		

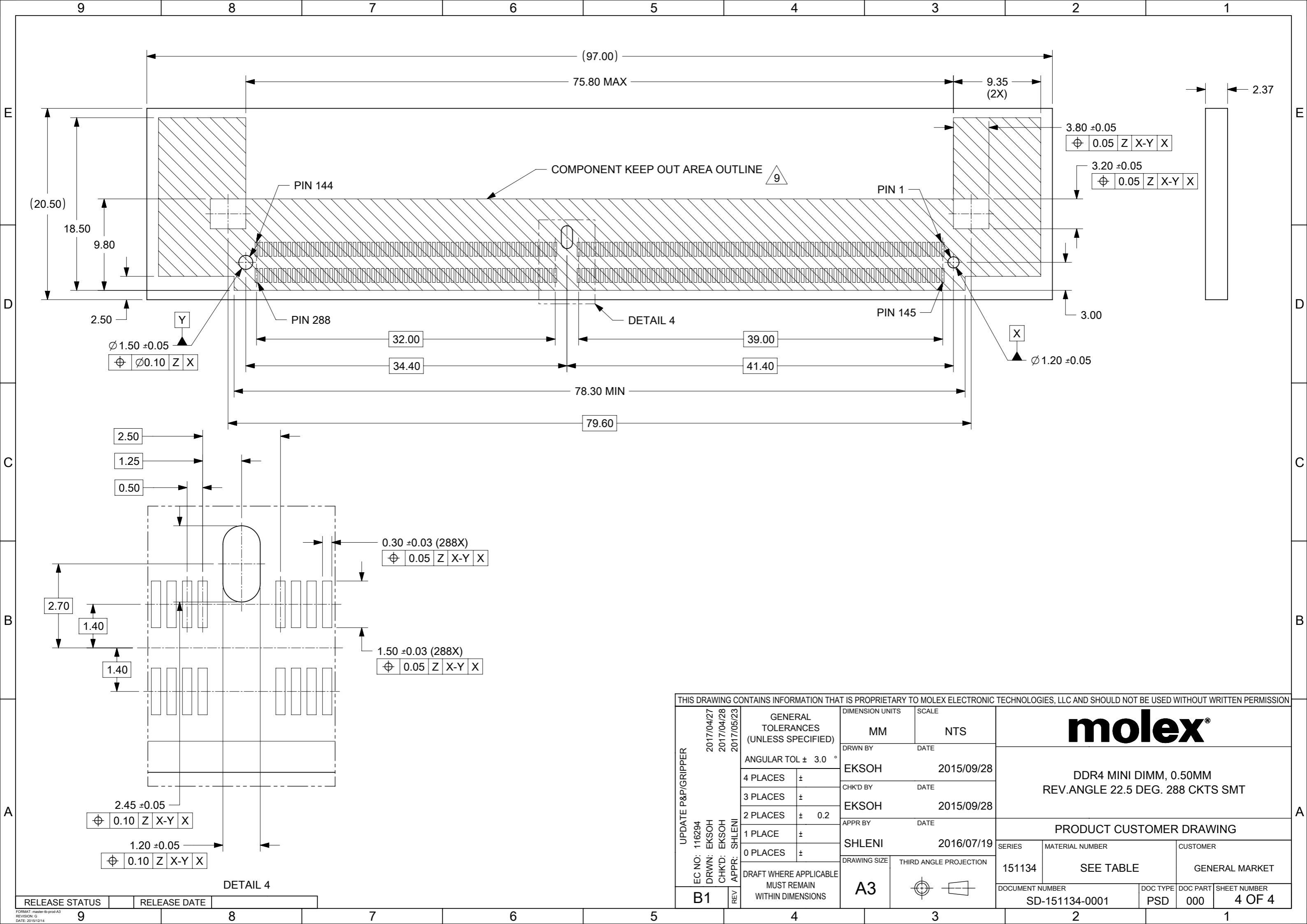


NOTE:
 1. CHAMFERS AND/OR RADII AS DEFINED BY JEDEC SOLID STATE PRODUCT OUTLINE

TYPE OF MODULE CARD	A	B
STANDARD	30	17
VLP	18.75	5.75
RELEASE STATUS	RELEASE DATE	

THIS DRAWING CONTAINS INFORMATION THAT IS PROPRIETARY TO MOLEX ELECTRONIC TECHNOLOGIES, LLC AND SHOULD NOT BE USED WITHOUT WRITTEN PERMISSION

UPDATE P&P/GRIPPER EC NO: 116294 DRWN: EKSOH CHK'D: EKSOH APPR: SHLENI	2017/04/27	2017/04/28	2017/05/23	GENERAL TOLERANCES (UNLESS SPECIFIED) ANGULAR TOL ± 3.0 ° 4 PLACES ± 3 PLACES ± 2 PLACES ± 0.2 1 PLACE ± 0 PLACES ± DRAFT WHERE APPLICABLE MUST REMAIN WITHIN DIMENSIONS	DIMENSION UNITS	SCALE	 DDR4 MINI DIMM, 0.50MM REV.ANGLE 22.5 DEG. 288 CKTS SMT			
					MM	NTS				
					DRWN BY	DATE		EKSOH	2015/09/28	
					CHK'D BY	DATE		EKSOH	2015/09/28	
					APPR BY	DATE		SHLENI	2016/07/19	
B1	REV				DRAWING SIZE	THIRD ANGLE PROJECTION	PRODUCT CUSTOMER DRAWING			
					A3		SERIES	MATERIAL NUMBER	CUSTOMER	
							151134	SEE TABLE	GENERAL MARKET	
							DOCUMENT NUMBER	DOC TYPE	DOC PART	SHEET NUMBER
							SD-151134-0001	PSD	000	3 OF 4



COMPONENT KEEP OUT AREA OUTLINE $\triangle 9$

PIN 144

PIN 1

PIN 288

DETAIL 4

PIN 145

Y

X

THIS DRAWING CONTAINS INFORMATION THAT IS PROPRIETARY TO MOLEX ELECTRONIC TECHNOLOGIES, LLC AND SHOULD NOT BE USED WITHOUT WRITTEN PERMISSION				
UPDATE P&P/GRIPPER EC NO: 116294 DRWN: EKSOH CHK'D: EKSOH APPR: SHLENI	GENERAL TOLERANCES (UNLESS SPECIFIED)		DIMENSION UNITS	SCALE
	ANGULAR TOL $\pm 3.0^\circ$		MM	NTS
	4 PLACES	\pm	DRWN BY	DATE
	3 PLACES	\pm	EKSOH	2015/09/28
	2 PLACES	± 0.2	CHK'D BY	DATE
1 PLACE	\pm	EKSOH	2015/09/28	
0 PLACES	\pm	APPR BY	DATE	
DRAFT WHERE APPLICABLE MUST REMAIN WITHIN DIMENSIONS		SHLENI	2016/07/19	
		DRAWING SIZE	THIRD ANGLE PROJECTION	
		A3		
molex [®]				
DDR4 MINI DIMM, 0.50MM REV.ANGLE 22.5 DEG. 288 CKTS SMT				
PRODUCT CUSTOMER DRAWING				
SERIES	MATERIAL NUMBER	CUSTOMER		
151134	SEE TABLE	GENERAL MARKET		
DOCUMENT NUMBER		DOC TYPE	DOC PART	SHEET NUMBER
SD-151134-0001		PSD	000	4 OF 4

RELEASE STATUS	RELEASE DATE
----------------	--------------