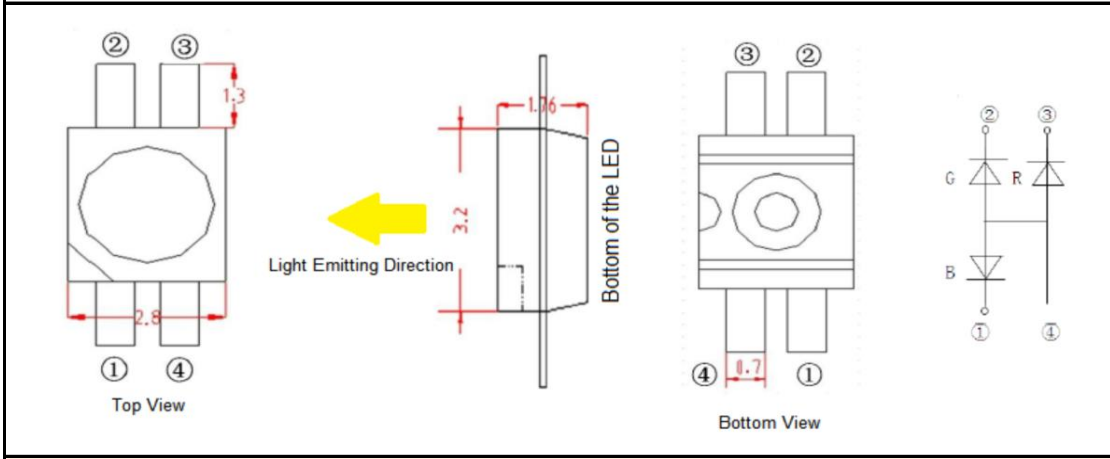


PRODUCT CHANGE NOTIFICATION

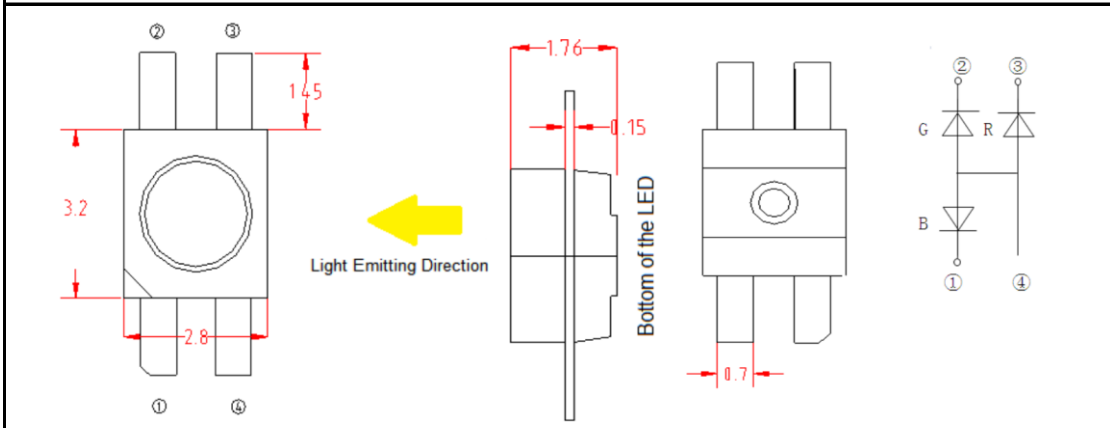
PCN No.:	10078	Date of Issue:	2020/11/02
Title of Change:	Lead Frame & Cosmetic Change	PCN Effective Date:	2020/11/02
Type of Change:	Minor Cosmetic Change (Lead Frame Change)	Last Time Buy Date:	N/A
Change Description:	Beginning immediately after September 01, 2020. QT-Brightek begins the shipment of QBLP677R-RGB LED series with a new lead frame. This is a footprint compatible replacement. Customers may receive shipments containing both the current and new lead frame appearances in the same shipment until QT-Brightek's inventory of the current lead frame LEDs appearance is depleted.	Last Time Ship Date:	N/A
Reason for Change:	The lead frame supplier stopped producing original lead fame. A new lead footprint compatible lead frame will be used. It is a compatible replacement with minor cosmetic and dimension change.		
Lot Number / Date Code Identification	Part shipping after September 1st, 2020 or after the date code:2020-09-01 will have the new lead frame.		
Effect of Change on Product Fit, Form, or Function	Fit: Remains Unchanged, Form: Remains Unchanged, Function: Unchanged. New lead frame is compatible with the solder pad of the old lead frame. All other mechanical, electrical and optical parameters remain unchanged. No re-design for existing applications is required.		
Reference To Change Types: <ul style="list-style-type: none"> ■ Acquisition (Complete) ■ Acquisition (Partial) ■ Fabrication Site Change / Qualification / Country of Origin / New Subcontractor ■ Obsolescence ■ Cosmetic Change ■ Name Change ■ Nomenclature Change ■ Reversal ■ Process Change ■ Design Change / Data Sheet Spec Change ■ Packaging and Media ■ Storage and Handling ■ Logistics ■ Roadmap ■ Quality Alert Notifications ■ Multiple Types ■ Environmental Announcement ■ New Component or Raw Material Added ■ Other 			

Datasheet Version	QBLP677R-RGB	
	Old	New
	V1.2	V2.0

Old Lead Frame

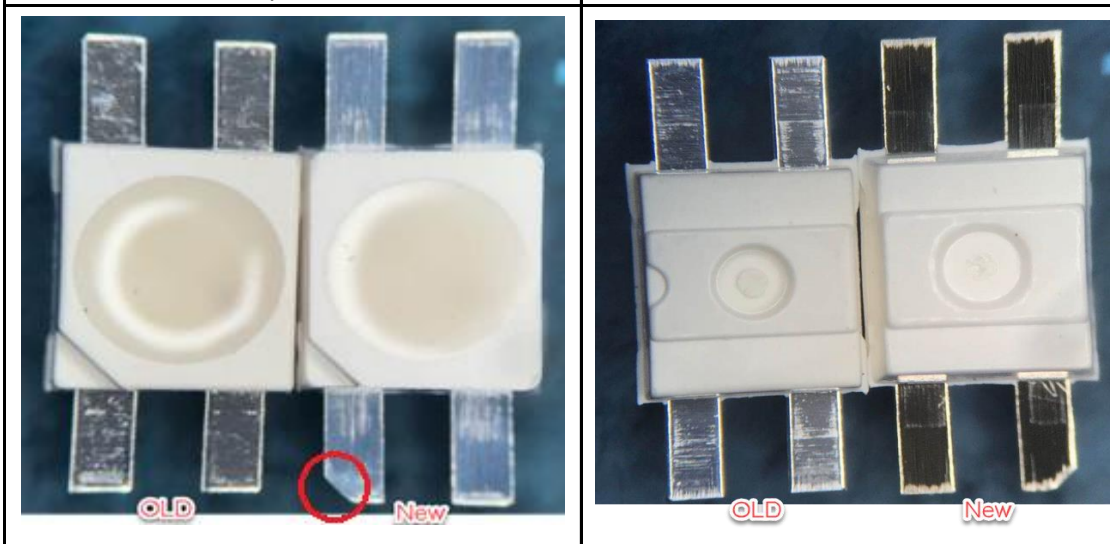


New Lead Frame



Top View

Bottom View



- *New lead frame will have a notched corner on one of the pin to indicate where the pin 1 (Cathode Blue) is
- *The 4 leads are slightly longer on the new lead frame. (New 1.45mm vs Old 1.3mm)