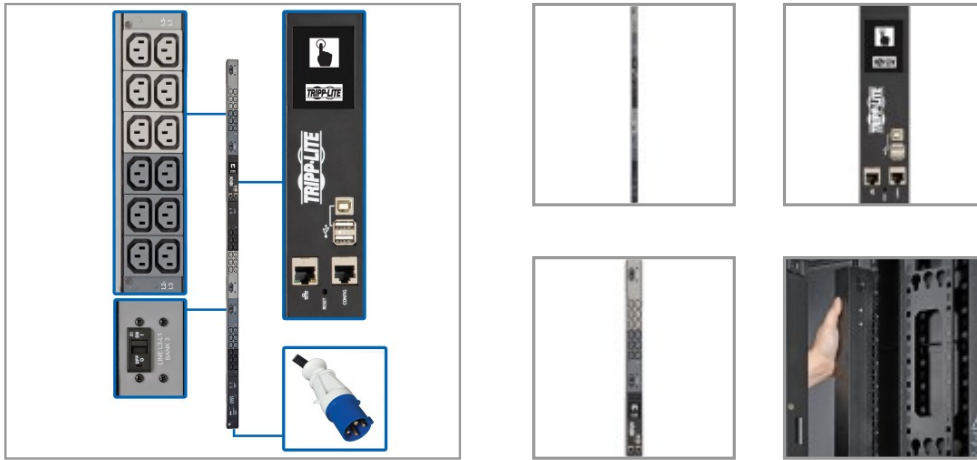


## 18.7kW 200-240V 3PH Monitored PDU - LX Interface, Gigabit, 36 C13 Outlets, IEC 309 60A Blue Input, LCD, 1.8 m Cord, 0U 1.8 m Height, TAA

MODEL NUMBER: PDU3EVN6G60C



18.7kW 3-phase PDU with multifunction touchscreen LCD distributes and monitors AC power in an IT or industrial environment.

### Features

**3-Phase PDU Distributes and Monitors Network-Grade Power** Recommended for data centers, server rooms and network closets, the 18.7kW PDU3EVN6G60C provides real-time remote monitoring of voltage and load levels via built-in network connection. A six-foot (1.8-meter) cord with IEC 309 60A Blue (3P+E) input plug connects the 3-phase PDU to a compatible AC power source, generator or protected UPS. The firmware can be easily upgraded to ensure the 0U PDU continues to perform at its best as connected equipment adds new features.

**36 Outlets Dispense AC Power** During normal operation, 36 C13 outlets distribute AC power to connected equipment. Each 200-240V outlet is accompanied by an LED that illuminates when the outlet is ramped up and ready to be used. The outlets are split into six load banks, each protected by a 20A circuit breaker that trips if the bank's connected load exceeds its maximum load rating. Plug-lock insert sleeves are included to prevent connected cables from becoming accidentally dislodged.

**Built-In GbE-Capable Network Management Card Allows Remote Access 24/7** The built-in WEBCARDLX with the latest version of PowerAlert Device Manager firmware (PADM20) provides enhanced remote management capabilities, including customizable dashboard graphs to fit user preferences. The PADM20 upgrade and Tripp Lite's PowerAlert Element Manager (PAEM) software form a powerful tool for expanding maintenance functions in large installations, including firmware update checks and backup and restoration of device configurations.

**Color Touchscreen LCD Offers Important Data at a Glance** An easy-to-navigate color touchscreen LCD reports network data, including IP address, input current level per phase, and output current per load bank with  $\pm 1\%$  billing-grade accuracy. It also generates a unique QR code to allow read-only access to the 3-phase PDU via mobile device. If an EnviroSense2 module is connected to the PDU, the LCD also displays its status and environmental data, such as temperature and humidity.

**Easy to Install Vertically in an EIA-Standard 19 in. Rack** The 0U PDU mounts vertically using the included toolless mounting buttons or the included rack-mounting brackets. Spare buttons are also included. Use the included PDUMVROTATEBRKT kit to install the 3-phase PDU with outlets facing the

### Highlights

- 200-240V outlets distribute AC power to connected rack equipment
- 36 C13 outlets split into 6 separately breakered 20A single-phase load banks
- Pre-installed GbE-capable WEBCARDLX with latest version of PADM20 for enhanced remote management
- 1.8 m power cord with IEC 309 60A Blue input connects to compatible AC source
- Color touchscreen LCD provides vital load and environmental data and network info

### Applications

- Power a major data center with hundreds of server racks running mission-critical applications
- Monitor power loads from various computers, switches, servers and other networking equipment
- Distribute power to a computer network in a large commercial or industrial facility

### Package Includes

- PDU3EVN6G60C 18.7kW 3-Phase Monitored PDU
- Built-in LX Platform interface
- Configuration cable
- (36) Plug-lock insert sleeves
- Rack-mounting hardware
- Spare mounting buttons
- PDUMVROTATEBRKT mounting bracket accessory
- Owner's manual

rear for better airflow or equipment access.

**TAA-Compliant for GSA Schedule Purchases**The PDU3EVN6G60C is compliant with the Federal Trade Agreements Act (TAA), which makes it eligible for GSA (General Services Administration) Schedule and other federal procurement contracts.

**2-Year Warranty**The PDU3EVN6G60C is backed by a 2-year warranty, ensuring reliability and performance.

## Specifications

OVERVIEW	
UPC Code	037332206800
PDU Type	Monitored
INPUT	
Input Phase	3-Phase
PDU Input Voltage	200; 208; 220; 230; 240
Recommended Electrical Service	Three-phase 60A 200-240V service
Maximum Input Amps	45
Maximum Input Amps Details	Agency de-rated to 45A continuous
PDU Plug Type	IEC-309 60A BLUE (3P+E)
Input Cord Length (ft.)	6
Input Cord Length (m)	1.83
OUTPUT	
Output Capacity Details	18.7kW (240V), 17.9kW (230V), 17.1kW (220V), 16.2kW (208V), 15.6kW (200V) total capacity; 26A max per output phase (L1-L2, L2-L3, L3-L1); 20A max per breaker outlet bank; 12A max per C13 outlet
Frequency Compatibility	50 / 60 Hz
Output Receptacles	(36) C13
Output Nominal Voltage	200-240V
Overload Protection	Six 20A circuit breakers, 1 per outlet bank
USER INTERFACE, ALERTS & CONTROLS	
Reported Load Segments	Reports input current per phase (L1, L2, L3) and output current for each breaker outlet bank (B1-B6); Outlets are color-coded and labeled for phase and load bank identification; L1-L2 feeds black outlets (B1 & B4); L2-L3 feeds dark-gray outlets (B2 & B5); L3-L1 feeds light-gray outlets (B3 & B6)
Front Panel LCD Display	Touchscreen LCD reports NETWORK DATA (IP address, Subnet Mask, Gateway, MAC Address, Device Name, Model, Serial Number), INPUT PHASE DATA (Amperage, Wattage, Voltage per phase, plus Unbalance percentage), LOAD BANK DATA (Amperage, Wattage, Voltage per load bank, plus total PDU output in watts), CONFIGURATION DATA (Listing of current configuration settings), ENVIRONMENTAL DATA (Reports data and status of E2 sensor modules; Sensor options are available for temperature and humidity, plus input and output dry contacts), MOBILE ACCESS (Generates a unique QR code to view reported PDU details on a mobile device)

Current Measurement Accuracy (Amps)	+/-1%
Voltage Measurement Accuracy (Volts)	+/-1%
Power Measurement Accuracy (Watts)	+/-1%
<b>SURGE / NOISE SUPPRESSION</b>	
Automatic Shut-Off	No
<b>PHYSICAL</b>	
Material of Construction	Metal
Form Factors Supported	Vertical rackmount installation supported with included mounting brackets; supports toolless mounting in button-mount compatible racks
PDU Form Factor	Vertical (0U)
Shipping Dimensions (hwd / in.)	6.89 x 9.65 x 75.87
Shipping Dimensions (hwd / cm)	17.50 x 24.51 x 192.71
Shipping Weight (lbs.)	25.43
Shipping Weight (kg)	11.53
Unit Dimensions (hwd / in.)	70.000 x 2.170 x 2.490
Unit Dimensions (hwd / cm)	177.8 x 5.5 x 6.3
Unit Weight (lbs.)	18.66
Unit Weight (kg)	8.46
<b>ENVIRONMENTAL</b>	
Operating Temperature Range	32° to 122°F (0° to 50°C)
Storage Temperature Range	-22° to 140°F (-30° to 60°C)
Relative Humidity	5% to 95% non-condensing
Operating Elevation (ft.)	0-10,000
Operating Elevation (m)	0-3000
<b>COMMUNICATIONS</b>	
PowerAlert Software	LX Platform Interface: PowerAlert Device Manager
Communications Cable	USB B-to-USB A Configuration/Console Access cable
Network Monitoring Port	RJ45 Network port, RJ45 Config/Console Access port; 2x USB A ports supports a variety of EnviroSense2 environmental and control modules. See Accessories>Management Hardware section for more information about these modules. USB B port (Configuration & Console Access)
SNMP Compatibility	Pre-installed LX platform network interface
Network Compatibility	10 Mbps; 100 Mbps (Fast Ethernet); 1 Gbps (Gigabit)

FEATURES & SPECIFICATIONS	
High Availability PDU Features	Remote Network Notifications
STANDARDS & COMPLIANCE	
Product Certifications	CAN/CSA-C22.2 No. 60950-1 (Canada); NOM (Mexico); UL 60950-1
Product Compliance	RoHS; FCC Part 15 Class A (USA); Trade Agreements Act (TAA)
WARRANTY & SUPPORT	
Product Warranty Period (Worldwide)	2-year limited warranty