



520 Park East Blvd., New Albany, IN 47150 U.S.A  
 (812)-944-6733 / 1-800-SAMTEC9

## Product Change Notification

**1. ECR #:** 165597  
**Notification #:** 390

**2. Date of Announcement:** August 22, 2018

### 3. Series:

- QTE - .8mm DOUBLE ROW MI TERMINAL ASSEMBLY
- QTH - .5mm DOUBLE ROW MI SOCKET ASSEMBLY
- QTS - .635mm DOUBLE ROW HS TERMINAL ASSEMBLY

### 4. Part #'s Affected

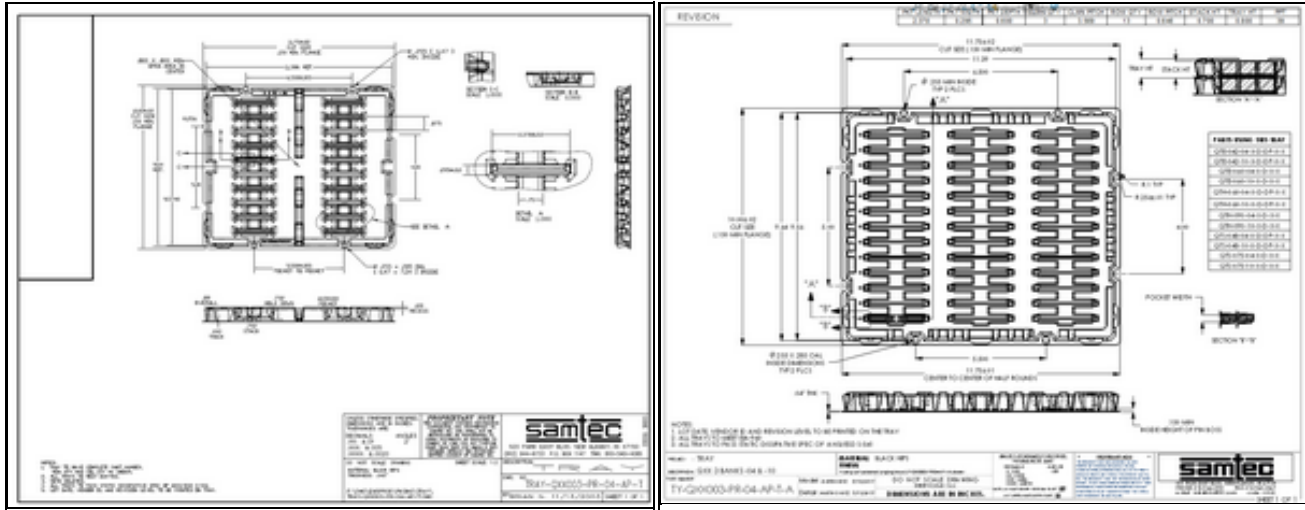
- QTE-042-04-X-D-DP-X-X
- QTE-042-10-X-D-DP-X-X
- QTE-060-04-X-D-X-X
- QTE-060-10-X-D-X-X
- QTH-060-04-X-D-DP-X-X
- QTH-060-10-X-D-DP-X-X
- QTH-090-04-X-D-X-X
- QTH-090-10-X-D-X-X
- QTS-048-04-X-D-DP-X-X
- QTS-048-10-X-D-DP-X-X
- QTS-075-04-X-D-X-X
- QTS-075-10-X-D-X-X

### 5. Description of Change:

Matrix design tray has been modified

### 6. Method of Identifying Change

Change row quantity from 10 to 13 , and column quantity from 2 to 3



### 7. Reason for Change:

Changes are being made to improve the manufacturability

**8. Impact of Change on Form, Fit, or Function:**

- Form - Matrix Change

**9. Projected Implementation Date:** December 09, 2018

**Disclaimer**

Please review the change notification details listed above for specific information regarding the nature and timing of the change. While Samtec has taken precautions to ensure this change is not detrimental to your application, each application can be unique and therefore customers should consider the effect of the change on their specific application.

Samtec has taken efforts to ensure that all users of this product who have requested change notifications have been informed. However, you should assume that this is the only notification that will be sent and you, as the recipient, must determine how to communicate this information to your organization(s) and customer(s) as appropriate. If you wish to opt out of receiving Samtec Engineering Change Notification emails, please contact [CustomerECN@samtec.com](mailto:CustomerECN@samtec.com). Due to technical progress, specifications are subject to change without notification and it is recommended to provide an alternative contact when opting out.

Please contact Samtec at [CustomerECN@samtec.com](mailto:CustomerECN@samtec.com) for any questions related to this change.