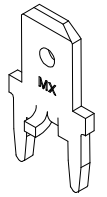
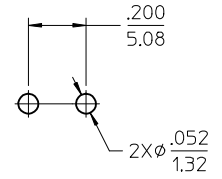
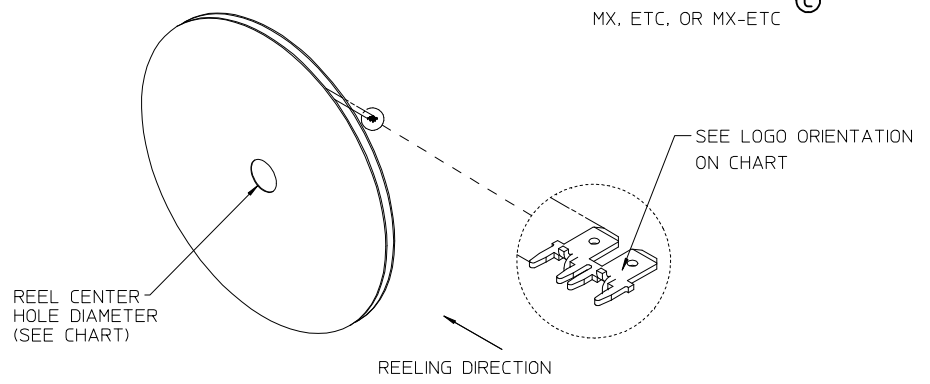
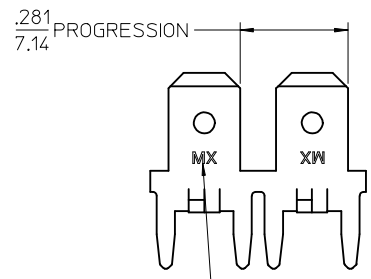
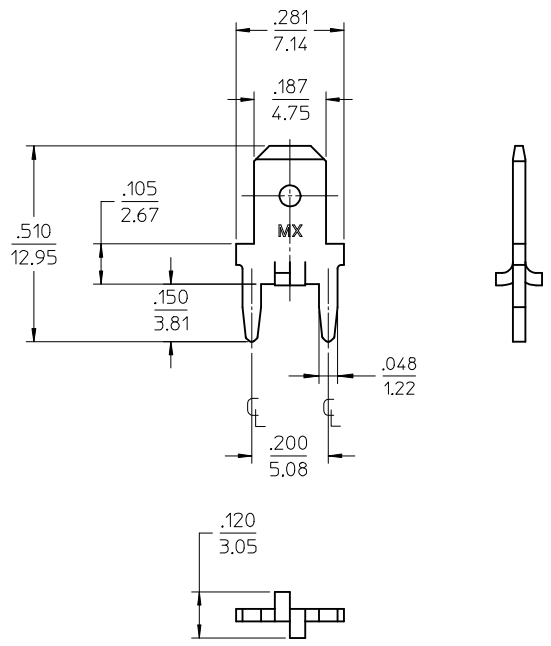


MATERIAL NUMBER	ENGINEERING NUMBER	CARRIER	TAB THICKNESS	LOGO ORIENTATION	REEL CENTER HOLE Ø REF.
197084023	19708-4023	STRIP	.020/0.51	IN	.750/19.05
197084033	19708-4033	STRIP	.032/0.81	IN	1.250/31.75



RECOMMENDED PCB HOLE LAYOUT



- NOTES:
1. BARE EDGES PERMISSIBLE AT CARRIER CUT OFF.
  2. MATERIAL: BRASS C26000
  3. MATERIAL THICKNESS: SEE CHART
  4. TAB CONFORMS TO NEMA SPECIFICATIONS.
  5. ALL DIMENSIONS AND NOTES REFERENCE UNLESS OTHERWISE NOTED.
  6. PLATING: MATTE TIN, 150µ IN/3.81µmm MINIMUM THICKNESS OVER NICKEL 50µ IN/1.25µmm MINIMUM THICKNESS.
  7. REF.: 10,000 MINIMUM PARTS PER REEL, REEL HAS 24" DIAMETER REEL WITH A (SEE CHART) DIAMETER CENTER HOLE.
  8. PART IS ROHS COMPLIANT.

<b>ADDED LOGO OPTIONS &amp; ROHS</b> EC NO: ETC2007-0338 DRW:HEHLE 2007/03/15 CHKD: JMACNEIL 2007/03/26 APPR: JMACNEIL 2007/03/27	QUALITY SYMBOLS ▽=0 ▽=0	GENERAL TOLERANCES (UNLESS SPECIFIED) <table border="1"> <thead> <tr> <th></th> <th>mm</th> <th>INCH</th> </tr> </thead> <tbody> <tr> <td>4 PLACES</td> <td>± .---</td> <td>± .---</td> </tr> <tr> <td>3 PLACES</td> <td>± .---</td> <td>± .005</td> </tr> <tr> <td>2 PLACES</td> <td>± 0.13</td> <td>± .01</td> </tr> <tr> <td>1 PLACE</td> <td>± 0.25</td> <td>± .---</td> </tr> </tbody> </table>		mm	INCH	4 PLACES	± .---	± .---	3 PLACES	± .---	± .005	2 PLACES	± 0.13	± .01	1 PLACE	± 0.25	± .---	DIMENSION STYLE <b>IN/MM</b>	SCALE <b>4:1</b>	DESIGN UNITS <b>INCH</b>	THIRD ANGLE PROJECTION
		mm	INCH																		
	4 PLACES	± .---	± .---																		
	3 PLACES	± .---	± .005																		
2 PLACES	± 0.13	± .01																			
1 PLACE	± 0.25	± .---																			
DRAWN BY JPAWLICK DATE 01/06/14	CHECKED BY RDEROSS DATE 01/06/15	APPROVED BY RDEROSS DATE 01/06/15	<b>MOLEX INCORPORATED</b> QUICK DISCONNECT, PCB MOUNT, .187 X .032/.020 TAB W/STABILIZERS																		
MATERIAL NO. <b>SEE CHART</b>	DOCUMENT NO. <b>SD-19708-001</b>	SHEET NO. <b>1 OF 1</b>	THIS DRAWING CONTAINS INFORMATION THAT IS PROPRIETARY TO MOLEX INCORPORATED AND SHOULD NOT BE USED WITHOUT WRITTEN PERMISSION																		
DRAFT WHERE APPLICABLE MUST REMAIN WITHIN DIMENSIONS																					