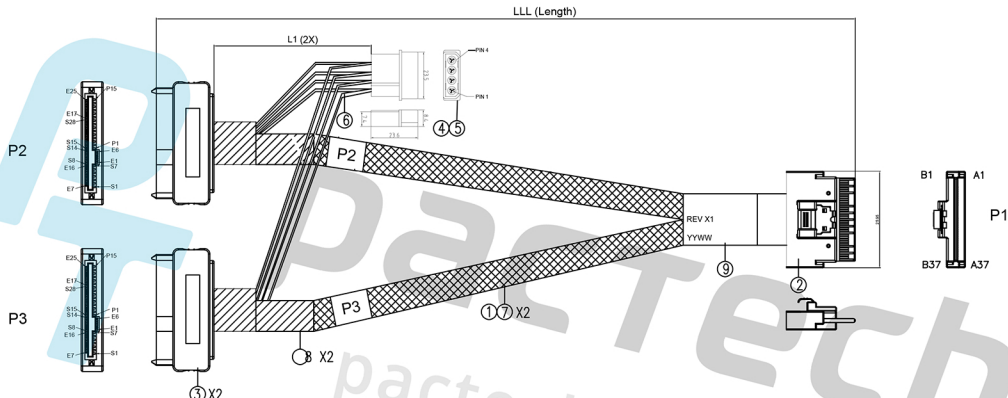



NOTICE: ALL PARTS MUST MEET TO RoHS REQUIREMENTS



NOTE:
 1. THE CABLE ASSEMBLY SHALL BE RoSH2.0 COMPLIANT.
 2. THE CABLE ASSEMBLY SHALL MEET IMPEDANCE REQUIREMENT:
 CONNECTORS: 85±15% OHMS, CABLE AREA: 85±10% OHMS.
 3. ELECTRICAL AND MECHANICAL PERFORMANCE SHALL MEET THE GEN4 INDUSTRIAL STANDARD.
 4. 100% OPEN & SHORT/ MISS WIRING & INTERMITTENCE TEST.

9	LABEL: SYNTHETIC PAPER, W30.0mm, WHITE	1
8	ACETATE TAPE, BLACK	A/R
7	EXPANDO TUBE, BLACK	A/R
6	UL1007 #24(7/0.127) OD=1.2 mm, 300V	A/R
5	TERMINAL MALE, 18~24AWG, BRONZE, TIN PLATED	4
4	HOUSING 5.8 4P/M PH=5.08mm, NATURAL	1
3	SFF-8639 PLUG W/ MOLDING, 85ohm	1
2	SFF-8654 8i PLUG, 85ohm	1
1	TWIN-AX SINGLE PAIR CABLE, 85ohm, UL APPROVED	A/R
ITEM	DESCRIPTION	QTY

1. * ±0.1 2. ** ±0.1 3. *** ±0.05 4. FRACT. ±1/32" 5. ANGULAR ±1/2"	Customer P/N: N/A	 pactech <small>Data Center & Custom Cable Solutions</small>	
	Customer REV.: N/A		
	PART NO. PT-SAS-SL8-39X2-LLL		TITLE Pactech SlimSAS 8i to Dual U.2 with a 5.25in power connector 500mm
	APPROVED		DRAWING NO.
	CHECKED J. Chan		UNIT SCALE SHEET REV. MM NONE 1/2 X1
DRAWN A. Huynh	DATE 2022-05-25		

NOTICE: ALL PARTS MUST MEET TO RoHS REQUIREMENTS

WIRING TABLE

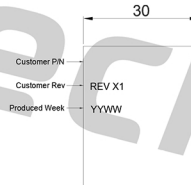
P1	PERP7	A2	E14	PERp0	←	P2 SAS wire
	PERN7	A3	E13	PERn0	←	
	PERP6	A5	S21	PERp1	←	
	PERN6	A6	S20	PERn1	←	
	PERP5	A14	S27	PERp2	←	
	PERN5	A15	S26	PERn2	←	
	PERP4	A17	E21	PERp3	←	
	PERN4	A18	E20	PERn3	←	
	PETP7	B2	E10	PETp0	→	
	PETN7	B3	E11	PETn0	→	
	PETP6	B5	S17	PETp1	→	
	PETN6	B6	S18	PETn1	→	
	PETP5	B14	S23	PETp2	→	
	PETN5	B15	S24	PETn2	→	
	PETP4	B17	E17	PETp3	→	
	PETN4	B18	E18	PETn3	→	
	CONN CLK 3 P	A8	E1	RefClk1+	→	
	CONN CLK 3 N	A9	E2	RefClk1-	→	
CONN CLK 2 P	A11	E7	RefClk0+	→		
CONN CLK 2 N	A12	E8	RefClk0-	→		
UP_SCL1	B8	E23	SMClk-	→		
UP_SDA1	B9	E24	SMDat	→		
PORT_RST#LS 3	B11	E4	ePerst1#	→		
PORT_RST#LS 2	B12	E5	ePerst0#	→		

P1	PERP3	A20	E14	PERp0	←	P3 SAS wire
	PERN3	A21	E13	PERn0	←	
	PERP2	A23	S21	PERp1	←	
	PERN2	A24	S20	PERn1	←	
	PERP1	A32	S27	PERp2	←	
	PERN1	A33	S26	PERn2	←	
	PERP0	A35	E21	PERp3	←	
	PERN0	A36	E20	PERn3	←	
	PETP3	B20	E10	PETp0	→	
	PETN3	B21	E11	PETn0	→	
	PETP2	B23	S17	PETp1	→	
	PETN2	B24	S18	PETn1	→	
	PETP0	B32	S23	PETp2	→	
	PETN0	B33	S24	PETn2	→	
	PETP1	B35	E17	PETp3	→	
	PETN1	B36	E18	PETn3	→	
	CONN CLK 1 P	A26	E1	RefClk1+	→	
	CONN CLK 1 N	A27	E2	RefClk1-	→	
CONN CLK 0 P	A29	E7	RefClk0+	→		
CONN CLK 0 N	A30	E8	RefClk0-	→		
UP_SCL0	B26	E23	SMClk-	→		
UP_SDA0	B27	E24	SMDat	→		
PORT_RST#LS 1	B29	E4	ePerst1#	→		
PORT_RST#LS 0	B30	E5	ePerst0#	→		

P2/P3		P4
P13,P14,P15	+12V	1
P12	GND	3
P7,P8,P9	+5V	4
P5,P6	GND	2

GND	SlimSAS 8 i	U.2 Connector
	A1/A4/A7/A10 /A13/A16/A19 A22/A25/A28/ A31/A34/A37 B1/B4/B7/B10/ B13/B16/B19 B22/B25/B28/ B31/B34/B37	E12/E15/S19 S22/S25/S28 E19/E22/E19 S16/E9

Part Number	Length (mm)
PT-SAS-SL8-39X2-250	250
PT-SAS-SL8-39X2-500	500
PT-SAS-SL8-39X2-750	750
PT-SAS-SL8-39X2-1000	1000



WLABEL DETAIL

1. * ±0.1 2. ** ±0.1 3. *** ±0.05 4 FRACT. ±1/32" 5. ANGULAR ±1/2"	Customer P/N: N/A	pactech <small>Data Center & Custom Cable Solutions</small>
	Customer REV.: N/A	
	PART NO. PT-SAS-SL8-39X2-LLL	TITLE Pactech SlimSAS 8i to Dual U.2 with a 5.25in power connector 500mm
	APPROVED	DRAWING NO.
CHECKED J. Chan	UNIT SCALE SHEET REV. MM NONE 2/3 X1	
DRAWN A. Huynh		
DATE 2022-05-25		