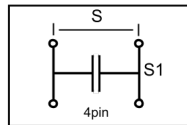
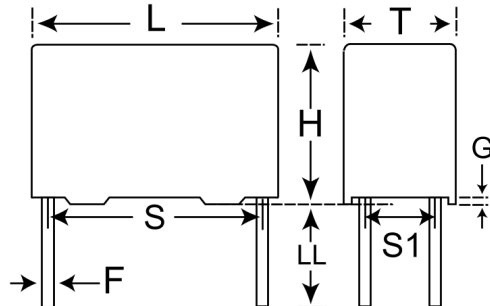


C4AEOBW5120A3FJ

Not for New Design

C4AE, Film, Metallized Polypropylene, DC Link, 12 uF, 5%, 900 VDC, 85°C,
Lead Spacing = 37.5mm



Click [here](#) for the 3D model.

Dimensions	
L	42mm +0.6/-0.7mm
H	40mm +0.2/-0.7mm
T	20mm +0.4/-0.7mm
S	37.5mm +/-0.4mm
S1	10.2mm +/-0.4mm
LL	6mm -2mm
F	1.2mm NOM
G	0.5mm NOM

Packaging Specifications

Packaging Bulk, Box

General Information	
Series	C4AE
Dielectric	Metallized Polypropylene
Style	Radial
RoHS	Yes
Termination	Tin
Lead	4 Wire Leads
AEC-Q200	No
Component Weight	45.11 g
Miscellaneous	Thermal Resistance = 20 C/W.
Notes	Not for new design – the replacement series is: C4AQ.

Specifications	
Capacitance	12 uF
Capacitance Tolerance	5%
Voltage DC	900 VDC
Temperature Range	-40/+85°C
Rated Temperature	85°C
Insulation Resistance	2.5 GOhms
Max dV/dt	16 V/us
Resistance	6.3 mOhms (10kHz 70C)
Ripple Current	10 Amps (10kHz 70C), 190 Amps (Peak)
Inductance	30 nH

Statements of suitability for certain applications are based on our knowledge of typical operating conditions for such applications, but are not intended to constitute - and we specifically disclaim - any warranty concerning suitability for a specific customer application or use. This information is intended for use only by customers who have the requisite experience and capability to determine the correct products for their application. Any technical advice inferred from this information or otherwise provided by us with reference to the use of our products is given gratis, and we assume no obligation or liability for the advice given or results obtained.