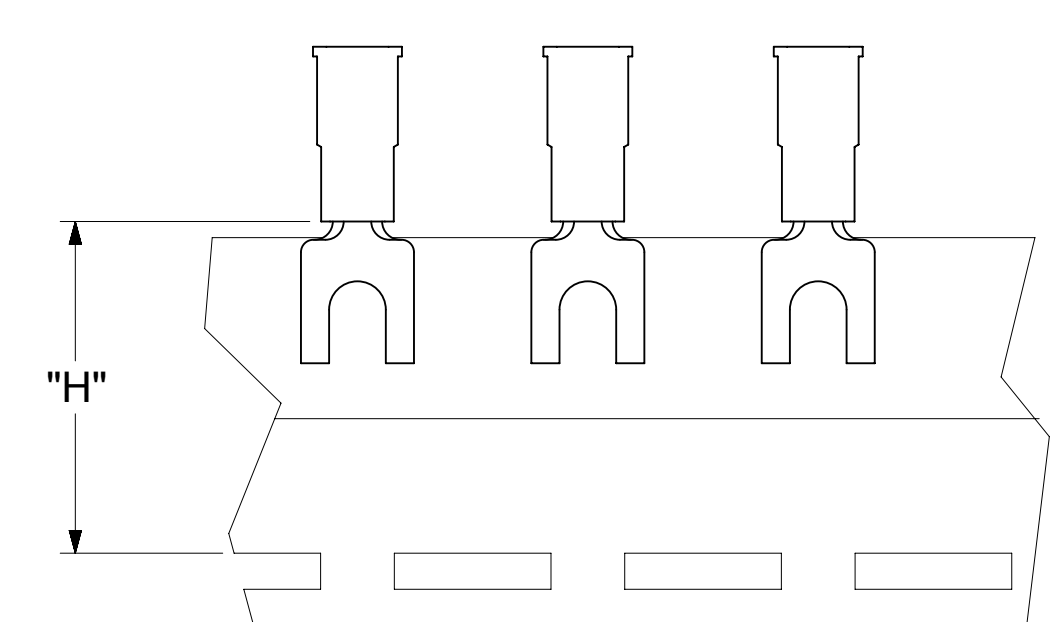
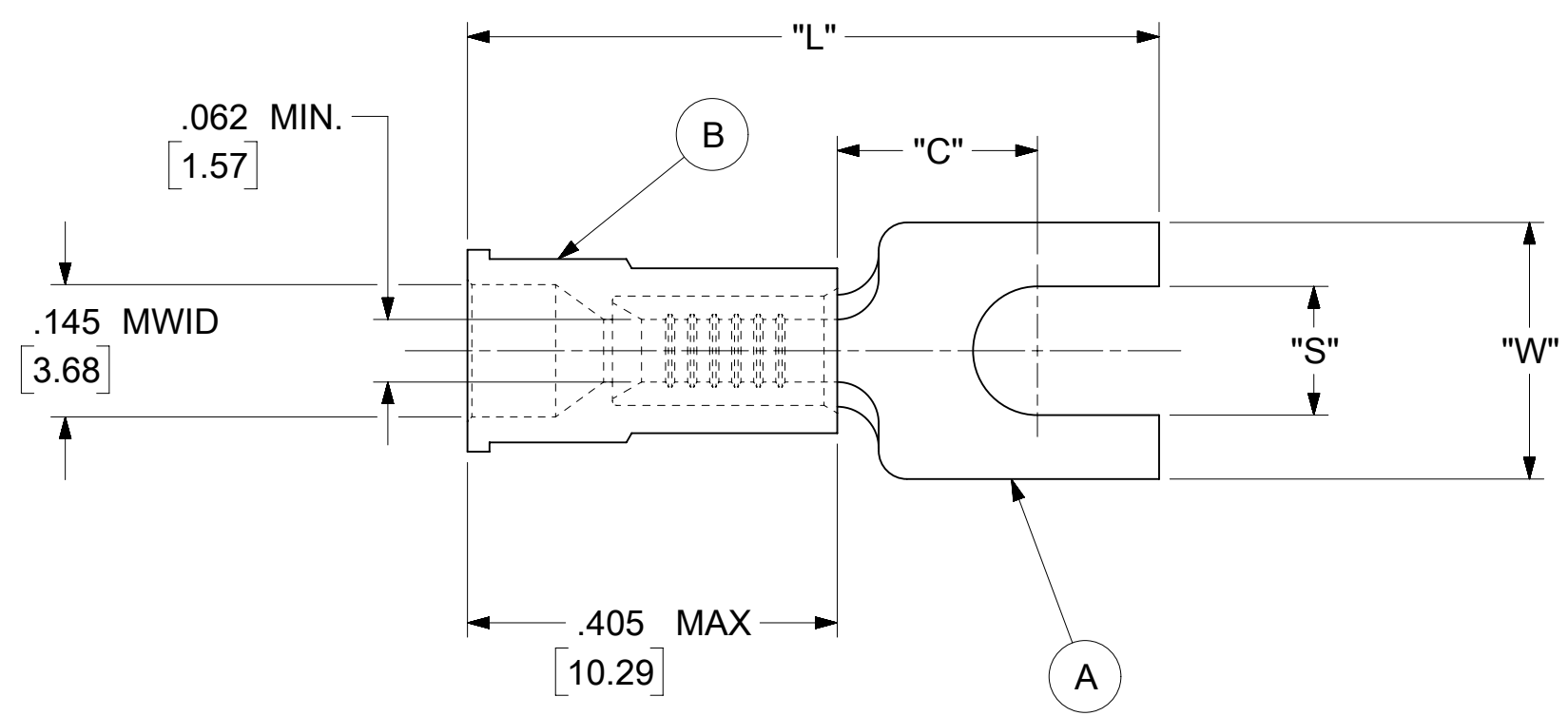


LOOSE PIECE		TAPE MOUNTED		SPECIFICATIONS						
MATERIAL NUMBER	ENGINEERING NUMBER	MATERIAL NUMBER	ENGINEERING NUMBER	STUD SIZE	"S" ±.005 [0.13]	"W" ±.010 [0.25]	"C" MIN.	"L" MAX.	"H"	STOCK THICKNESS
191440001	AA-235-06X	191440002	AA-235-06XT	6	.146 [3.71]	.316 [8.03]	.303 [7.70]	.915 [23.24]	.980 [24.89]	.028 $\frac{+.001}{-.000}$ [0.71]
191440003	AA-235-08X	191440004	AA-235-08XT	8	.173 [4.39]					
191440005	AA-235-10X	191440006	AA-235-10XT	10	.198 [5.03]					



PARTS ON TAPE

- NOTES:
- MATERIAL:
 - (A). SPADE TONGUE TERMINAL: COPPER
PLATING: ELECTRO-TIN (.0003 MIN.)
 - (B). INSULATION: MOLDED PVC (RED)
 - MWID: MAXIMUM WIRE INSULATION DIAMETER
 - WIRE SIZE: 22 -18 AWG
0.25 -1.5 MM²
 - "UL" LISTING #E32244
"CSA" LISTING #18689
 - ALL DIMENSIONS IN INCHES/[MM].
 - PARTS ARE ROHS COMPLIANT.
 - DIMS. SHOWN ARE FOR REFERENCE ONLY.

SYMBOLS	THIS DRAWING CONTAINS INFORMATION THAT IS PROPRIETARY TO MOLEX ELECTRONIC TECHNOLOGIES, LLC AND SHOULD NOT BE USED WITHOUT WRITTEN PERMISSION			
	DIMENSION UNITS	SCALE		CURRENT REV DESC: MIGRATION TO ECTR/NX
∇ = 0	INCH/MM	NTS		EC NO: 620268 DRWN: ABENJAMINLW 2019/07/05 CHK'D: DMYRICK 2019/07/08 APPR: JMACNEIL 2019/07/10
E = 0	GENERAL TOLERANCES (UNLESS SPECIFIED)			
E = 0		MM	INCH	
S = 0	4 PLACES	±	±	INITIAL REVISION: DRWN: JJ 1984/11/02 APPR: JMACNEIL 2019/07/10
▼ = 0	3 PLACES	±	± 0.005	
▽ = 0	2 PLACES	± 0.13	± 0.01	DOCUMENT NUMBER 191440001 DOC TYPE PSD DOC PART 000 REVISION A
∇ = 0	1 PLACE	± 0.25	±	
⊠ = 0	0 PLACES	±	±	MATERIAL NUMBER SEE TABLE CUSTOMER GENERAL MARKET SHEET NUMBER 1 OF 1
■ = 0	ANGULAR TOL ± °			
∇ = 0	DRAFT WHERE APPLICABLE MUST REMAIN WITHIN DIMENSIONS		THIRD ANGLE PROJECTION	DRAWING C-SIZE SERIES 19144

