



■ Features :

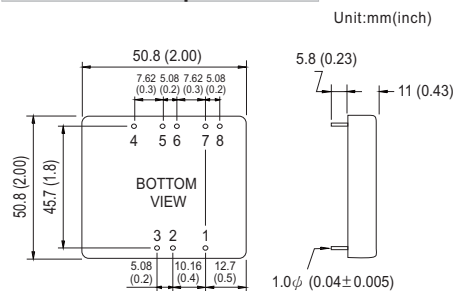
- 2"×2" compact size
- 2:1 wide input range
- High efficiency up to 93%
- 1500VDC I/O isolation
- Built-in remote ON / OFF control
- Built-in remote sense
- Trimming output ±10%
- Comply with CE / FCC without external components
- Protections: Short circuit / Overload / Input and output Over voltage
- Cooling by free air convection
- Six-sided shield metal case
- 100% burn-in test
- Low cost / High reliability
- Output 3.3V available
- 2 years warranty



SPECIFICATION

ORDER NO.	SKA60A-05	SKA60B-05	SKA60C-05	SKA60A-12	SKA60B-12	SKA60C-12	SKA60A-15	SKA60B-15	SKA60C-15										
OUTPUT	DC VOLTAGE			12V			15V												
	CURRENT RANGE			0.5 ~ 5A			0.4 ~ 4A												
	RATED POWER			60W															
	RIPPLE & NOISE (max.) Note.2			60mVp-p			80mVp-p			100mVp-p									
	LINE REGULATION Note.3			±0.5%															
	LOAD REGULATION Note.4			±0.5%															
	VOLTAGE ACCURACY			±2.0%															
	SWITCHING FREQUENCY			250KHz min.															
	EXTERNAL CAPACITANCE LOAD (max.)			1000uF			220uF		100uF										
EXTERNAL TRIM Adj. RANGE(Typ.)			±10%																
INPUT	VOLTAGE RANGE																		
	A: 9 ~ 18VDC B: 18 ~ 36VDC C: 36 ~ 75VDC																		
	EFFICIENCY (Typ.)																		
	91% 90.5% 92% 92% 92.5% 92% 92% 93% 92.5%																		
	DC CURRENT																		
Full load		5505mA		2775mA		1370mA		5445mA		2715mA		1370mA		5400mA		2690mA		1370mA	
No load		185mA		120mA		60mA		160mA		120mA		60mA		160mA		120mA		85mA	
FILTER																			
Pi network																			
REMOTE CONTROL																			
Power ON : R.C ~ -Vin > 2.5VDC or open circuit ; Power OFF : R.C ~ -Vin < 0.5VDC or short																			
PROTECTION																			
Fuse recommended																			
PROTECTION (Note. 5)	OVER CURRENT																		
	110% ~ 160% rated output power																		
	Protection type : Hiccup mode, recovers automatically after fault condition is removed																		
SHORT CIRCUIT																			
All output equipped with short circuit																			
Protection type : Hiccup mode, recovers automatically after fault condition is removed																			
OVER VOLTAGE		Input(Typ.)		A: >20 ~ 25VDC B: >40 ~ 50VDC C: >80 ~ 100VDC		input voltage		Protection type : Shut down o/p voltage, recovers automatically after fault condition is removed											
		Output(Typ.)		5Vo : 7V ~ 8.95V ; 12Vo : 15V ~ 19.2V ; 15Vo : 18V ~ 23.3V				Protection type : Clamp by TVS diode											
ENVIRONMENT	WORKING TEMP.																		
	-40 ~ +70°C (Refer to "Derating Curve")																		
	CASE TEMP.																		
	+100°C max.																		
	WORKING HUMIDITY																		
	20% ~ 90% RH non-condensing																		
STORAGE TEMP., HUMIDITY																			
-55 ~ +105°C, 10 ~ 95% RH																			
TEMP. COEFFICIENT																			
±0.03% / °C (0 ~ 50°C)																			
VIBRATION																			
10 ~ 500Hz, 2G 10min./1cycle, period for 60min. each along X, Y, Z axes																			
SAFETY & EMC	SAFETY STANDARDS																		
	EAC TP TC 004 approved																		
	WITHSTAND VOLTAGE																		
	I/P-O/P:1.5KVDC																		
	ISOLATION RESISTANCE																		
I/P-O/P: 100M Ohms / 500VDC / 25°C / 70% RH																			
EMC EMISSION																			
Compliance to BS EN/EN55032 Class A, FCC part 15 Class A without external components, EAC TP TC 020																			
EMC IMMUNITY																			
Compliance to BS EN/EN61000-4-2,3,4,5,6,8, light industry level, criteria A, EAC TP TC 020																			
OTHERS	DIMENSION																		
	50.8*50.8*11.0 mm or 2"*2"*0.43" inch (L*W*H)																		
WEIGHT																			
67g																			

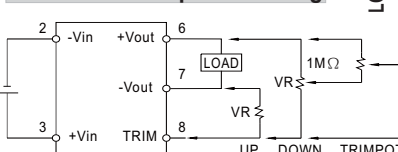
■ Mechanical Specification



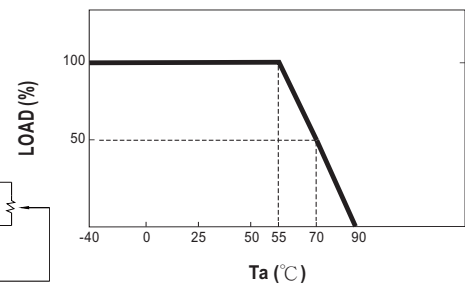
■ Pin Configuration

Pin No.	Output	Pin No.	Output
1	R.C	5	+R.S
2	-Vin	6	+Vout
3	+Vin	7	-Vout
4	-R.S	8	TRIM

■ External Output Trimming



■ Derating Curve



NOTE

1. All parameters are specified at normal input, rated load, 25°C 70% RH ambient.
  2. Ripple & noise are measured at 20MHz by using a 12" twisted pair terminated with a 0.1uF & 47uF capacitor.
  3. Line regulation is measured from low line to high line at rated load.
  4. Load regulation is measured from 10% to 100% rated load.
  5. Please prevent the converter from operating in overload or short circuit condition for more than 30 seconds.
- ※ Product Liability Disclaimer : For detailed information, please refer to <https://www.meanwell.com/serviceDisclaimer.aspx>