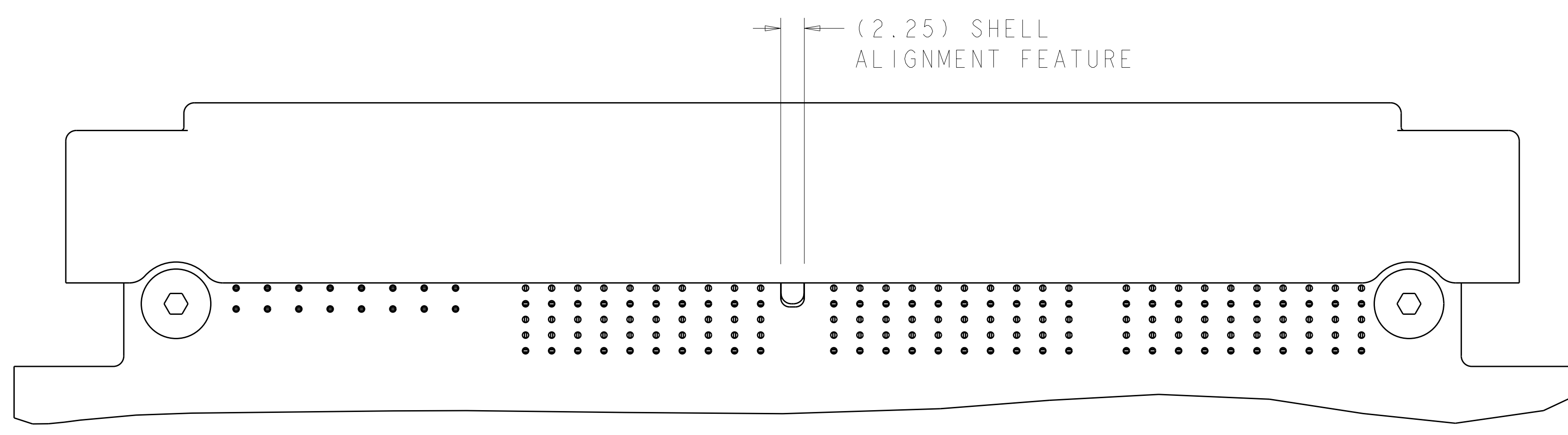
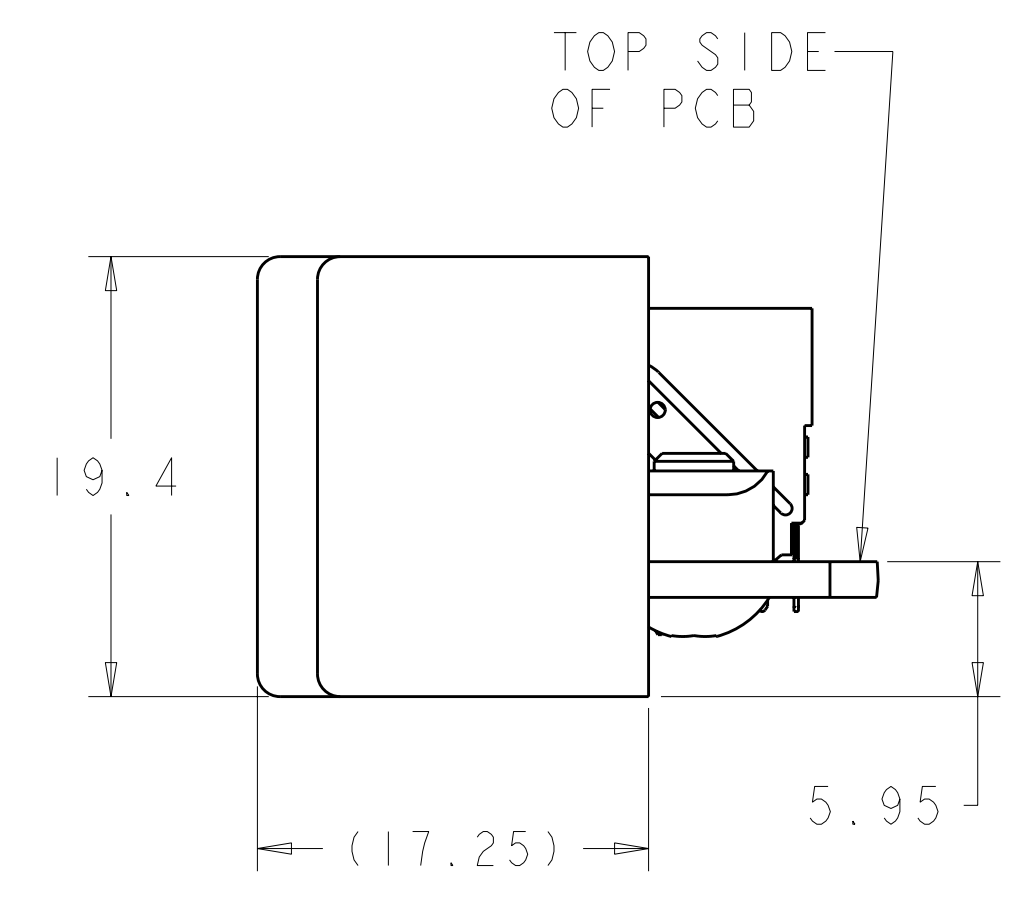
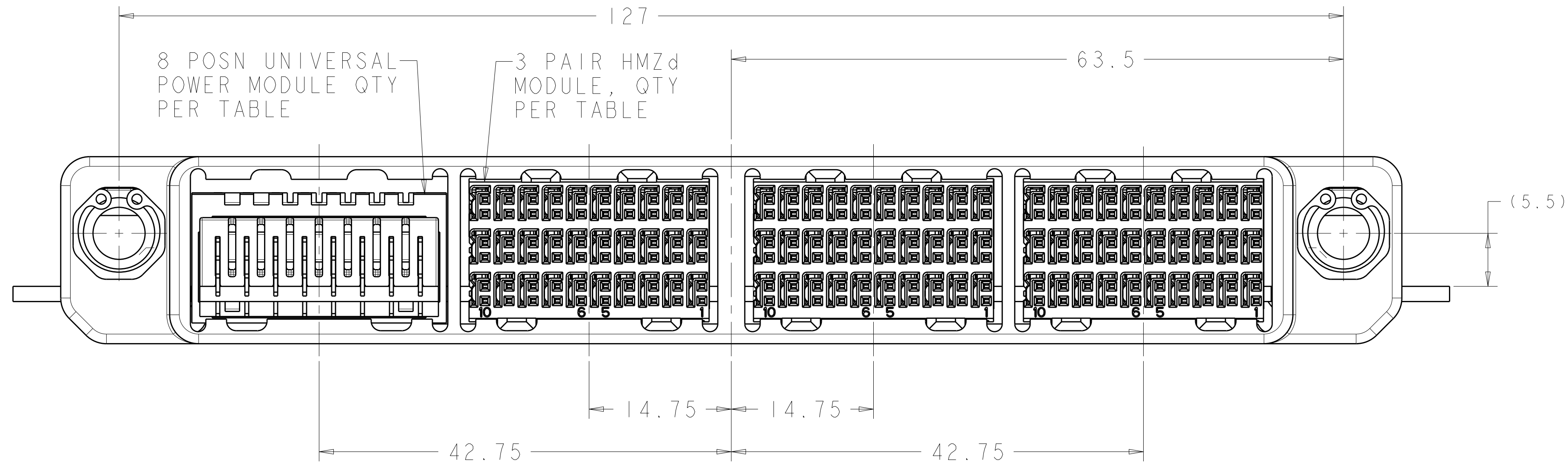
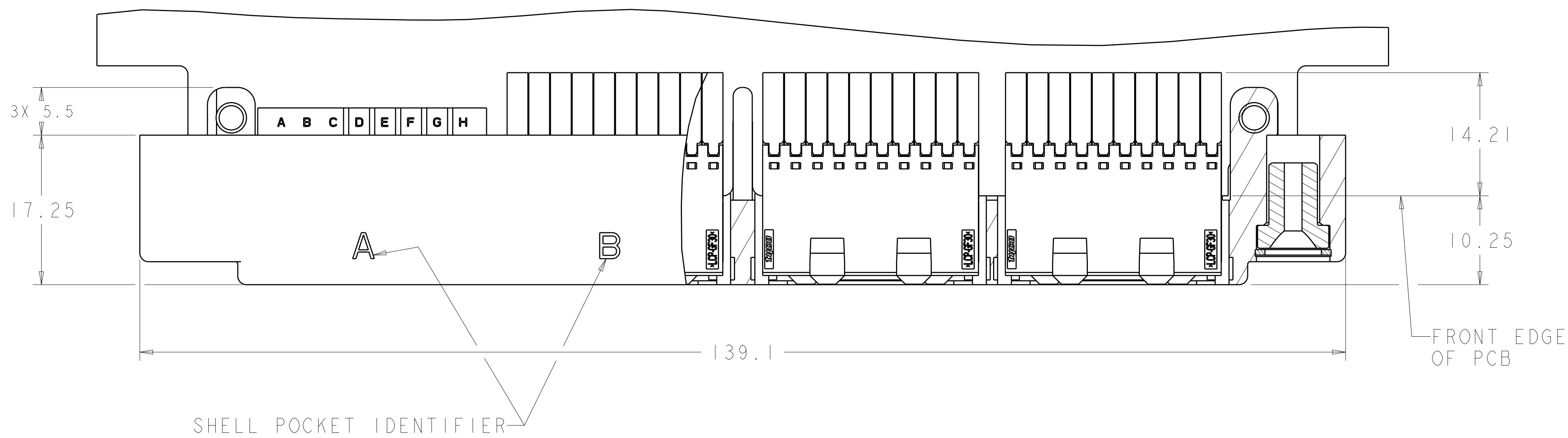


THIS DRAWING IS UNPUBLISHED. RELEASED FOR PUBLICATION  
 COPYRIGHT 20 BY TYCO ELECTRONICS CORPORATION. ALL RIGHTS RESERVED.

REVISONS		DESCRIPTION	DATE	DWN	APVD
LOC	DIST				
		D REV PER ECO 11-004119	2-28-11	CT	DH

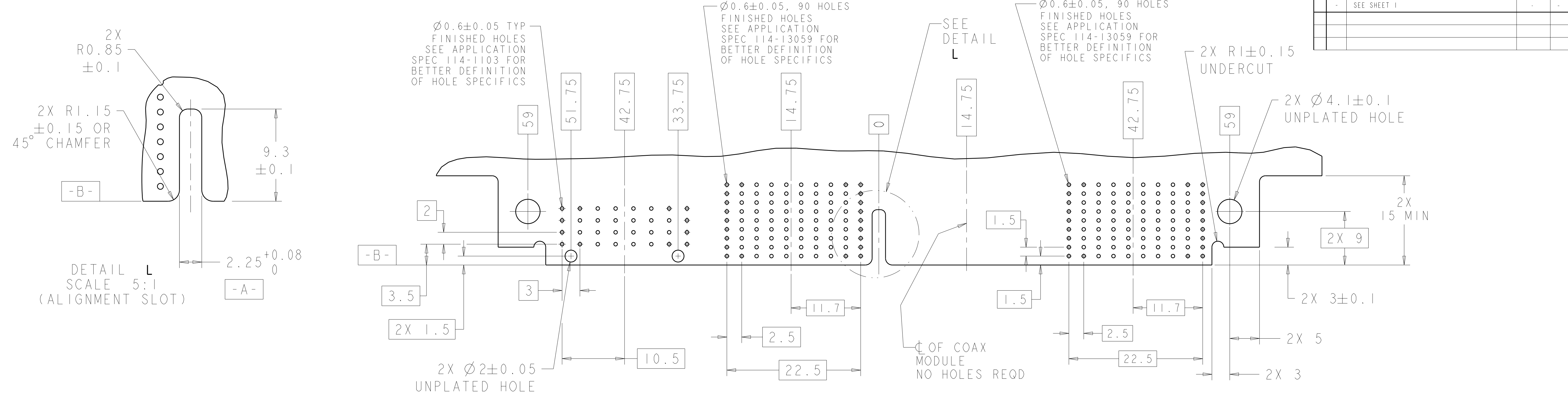


△	TIN-LEAD	1	-	1	2	2000667-5
△	--	--	-	-	-	2000667-4
	TIN-LEAD	--	-	1	3	2000667-3
	TIN	--	-	-	4	2000667-2
△	--	--	-	-	-	2000667-1
	TAIL PLATING	4 MT FIBER OPTIC MODULE	COAX	8 POSN UPM	3 PAIR HMZd	PART NUMBER
MODULE QTY PER ASSY						

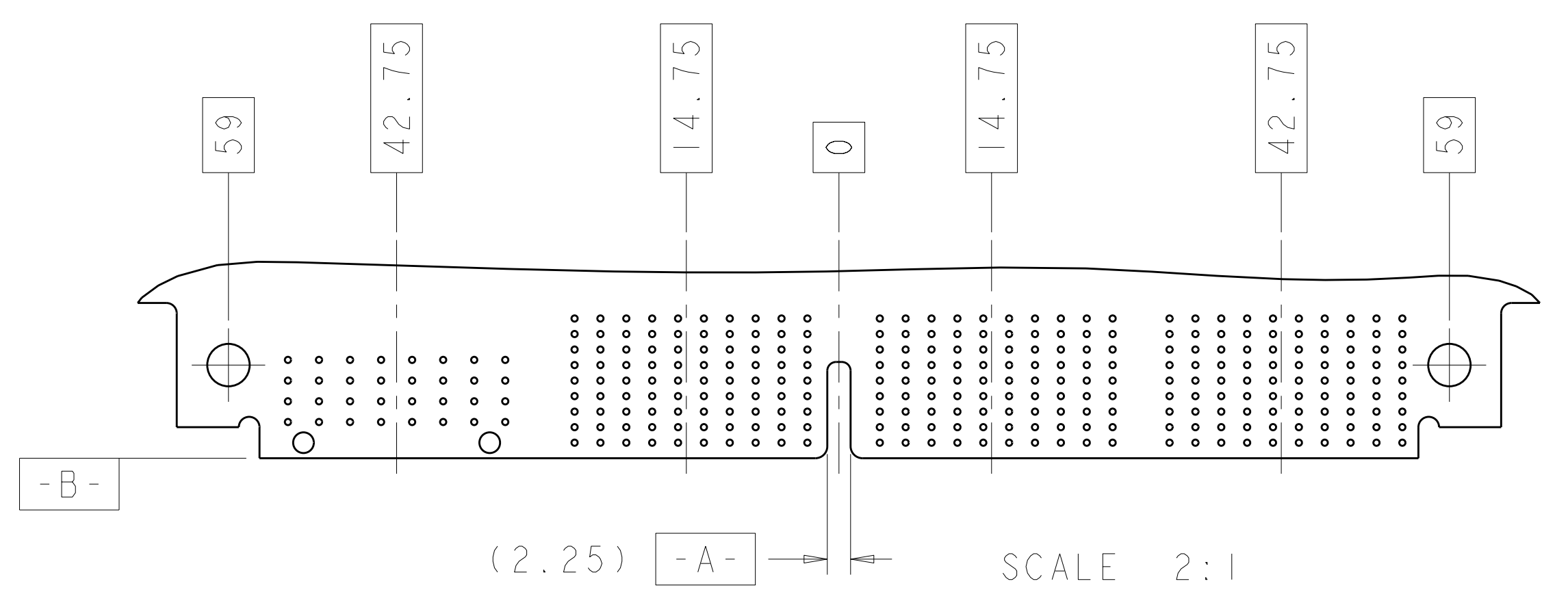
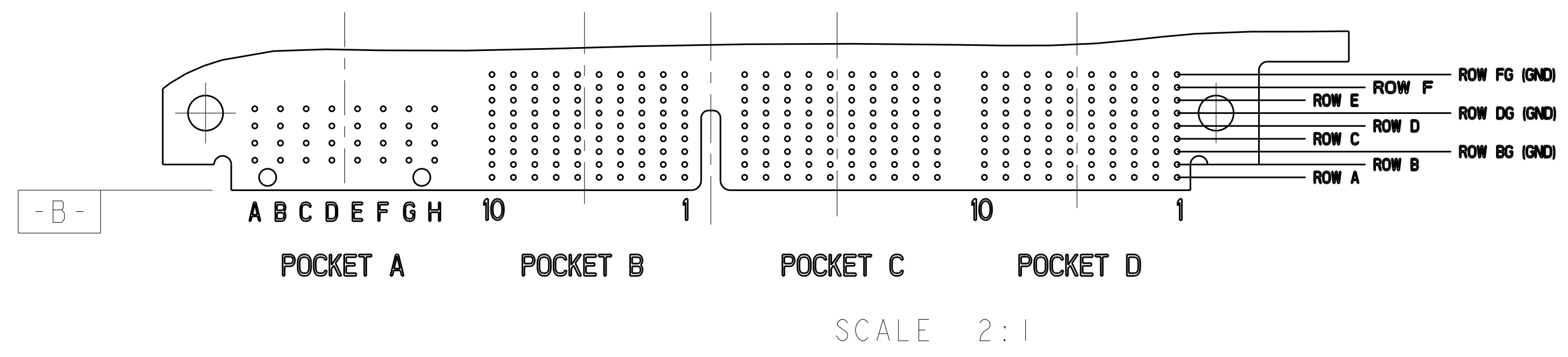
1. MATING CONNECTOR FOR THIS CONNECTOR IS 2000668.  
 △ PRELIMINARY- NOT RELEASED FOR PRODUCTION.

DIMENSIONS:		TOLERANCES UNLESS OTHERWISE SPECIFIED:		DWN: Brent D. Yohn		Tyco Electronics	
mm		0 PLC ±.1		DATE: 11DEC2009		Harrisburg, PA 17105-3608	
Ø		1 PLC ±.1		CHK: HUNG T. NGUYEN		NAME: HUNG T. NGUYEN	
		2 PLC ±.1		APVD: CHONG YI		PRODUCT SPEC: 2000667-5	
		3 PLC ±.1		CUSTOMER DRAWING		APPLICATION SPEC:	
		4 PLC ±.1		SCALE: 1:1		SIZE: A1	
		ANGLES		WEIGHT:		CAGE CODE: 2000667	
MATERIAL:		FINISH:		SHEET 1 OF 2		REV D	

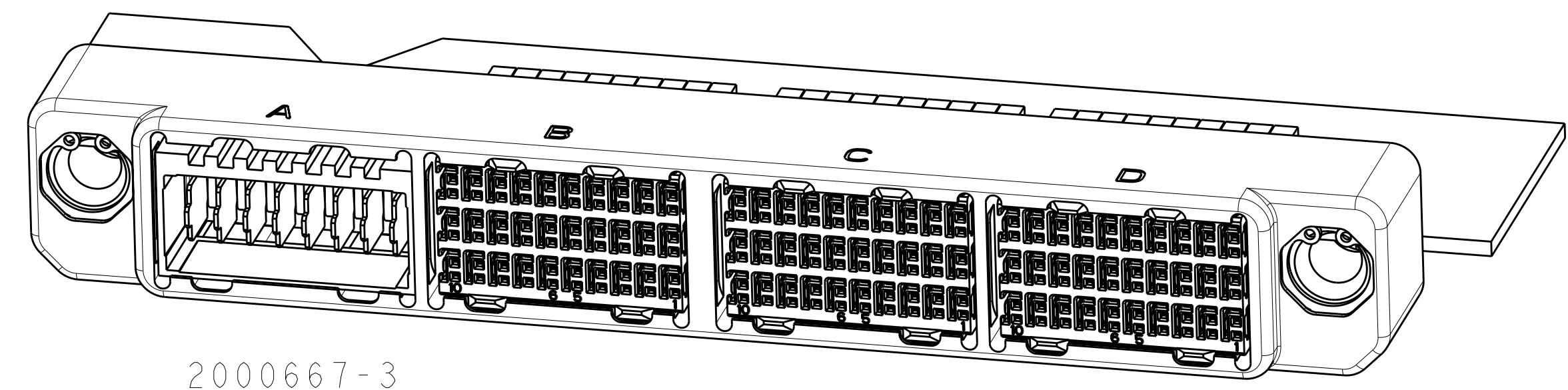
REVISONS		DATE	OWN	APVD
1	SEE SHEET 1			



RECOMMENDED PC BOARD HOLE LAYOUT  
 AS VIEWED FROM TOP OF PC BOARD  
 NO SPECIFIC PART NUMBER SHOWN



RECOMMENDED PC BOARD HOLE LAYOUT  
 AS VIEWED FROM TOP OF PCB  
 2000667-3 SHOWN (3 HM-Zd MODULES  
 AND 1 UPM MODULE)



2000667-3  
 SCALE 2:1

DIMENSIONS: mm 		TOLERANCES UNLESS OTHERWISE SPECIFIED: 9 PLC ±. 1 PLC ±. 5 PLC ±. 4 PLC ±. ANGLES ±. FINISH		DWN: Brent D. Yohn CHK: HUNG T. NGUYEN APVD: CHONG YI TDEC2009 NAME: DAUGHTER CARD CONNECTOR, HIGH SPEED RUGGEDIZED (HSR), 4 BAY, UNSEALED, RIGHT ANGLE SIZE: A11 CAGE CODE: 00779 DRAWING NO: 2000667 CUSTOMER DRAWING		Tyco Electronics Harrisburg, PA 17105-3608 SCALE: 1:1 SHEET 2 OF 2 REV D	
--------------------	--	---	--	---	--	--	--