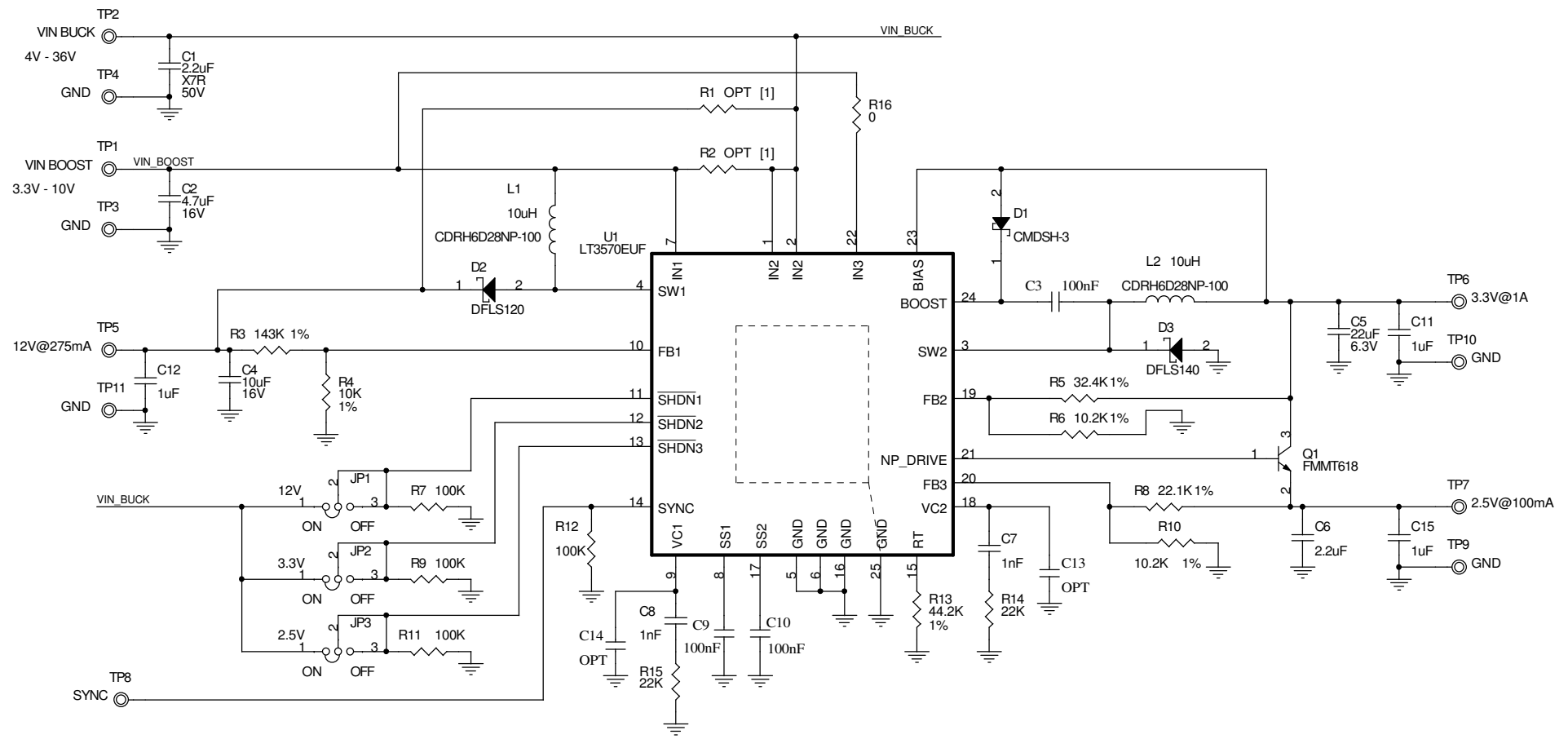


This circuit is proprietary to Linear Technology and supplied for use with Linear Technology parts.
Customer Notice: Linear Technology has made a best effort to design a circuit that meets customer-supplied specifications; however, it remains the customer's responsibility to verify proper and reliable operation in the actual application. Component substitution and printed circuit board layout may significantly affect circuit performance or reliability. Contact Linear Applications Engineering for assistance.

REVISION HISTORY				
ECO	REV	DESCRIPTION	DATE	APPROVED
	2	PROTO	05/14/08	



NOTES: UNLESS OTHERWISE SPECIFIED,
 [1] DO NOT STUFF.

UNLESS OTHERWISE SPECIFIED DIMENSIONS ARE IN INCHES TOLERANCE ON ANGLE - - - 2 PLACES - - - 3 PLACES - - - INTERPRET DIM AND TOL PER ASME Y14.5M -1994	CONTRACT NO.		1630 McCarthy Blvd. Milpitas, CA 95035 Phone: (408)432-1900 Fax: (408)434-0507
	APPROVALS	DATE	
	DRAWN MEI	05/10/06	
	CHECKED		
THIRD ANGLE PROJECTION	APPROVED		TITLE SCH, LT3570EUF, DC/DC BOOST, BUCK AND LDO CONVERTER
	ENGINEER		
DO NOT SCALE DRAWING	DESIGNER		SIZE CAGE CODE DWG NO Custom DC1106A
	Thursday, June 19, 2008		SCALE: NONE FILENAME: 1106A-2.DSN SHEET 1 OF 1