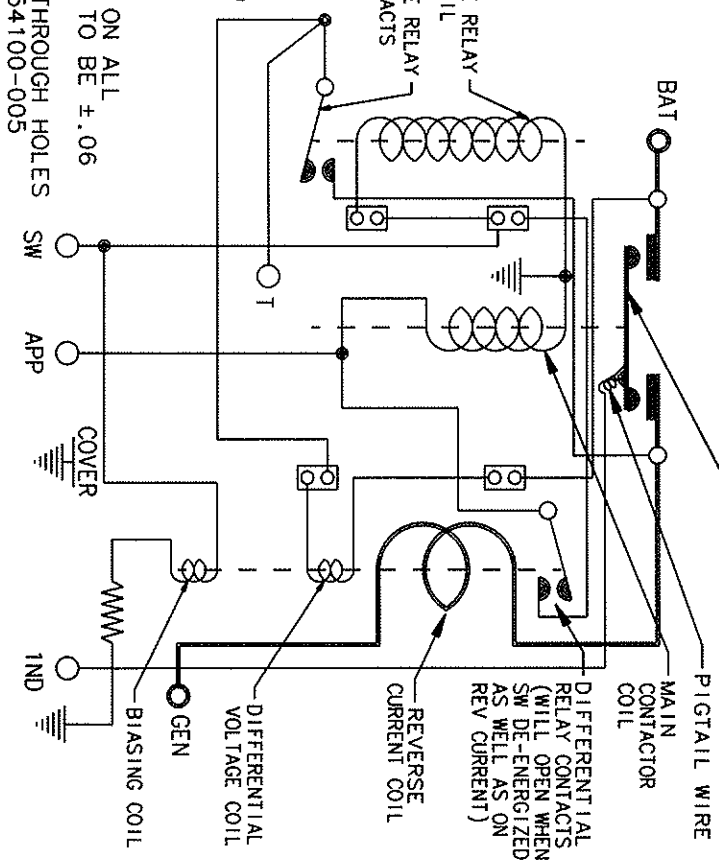
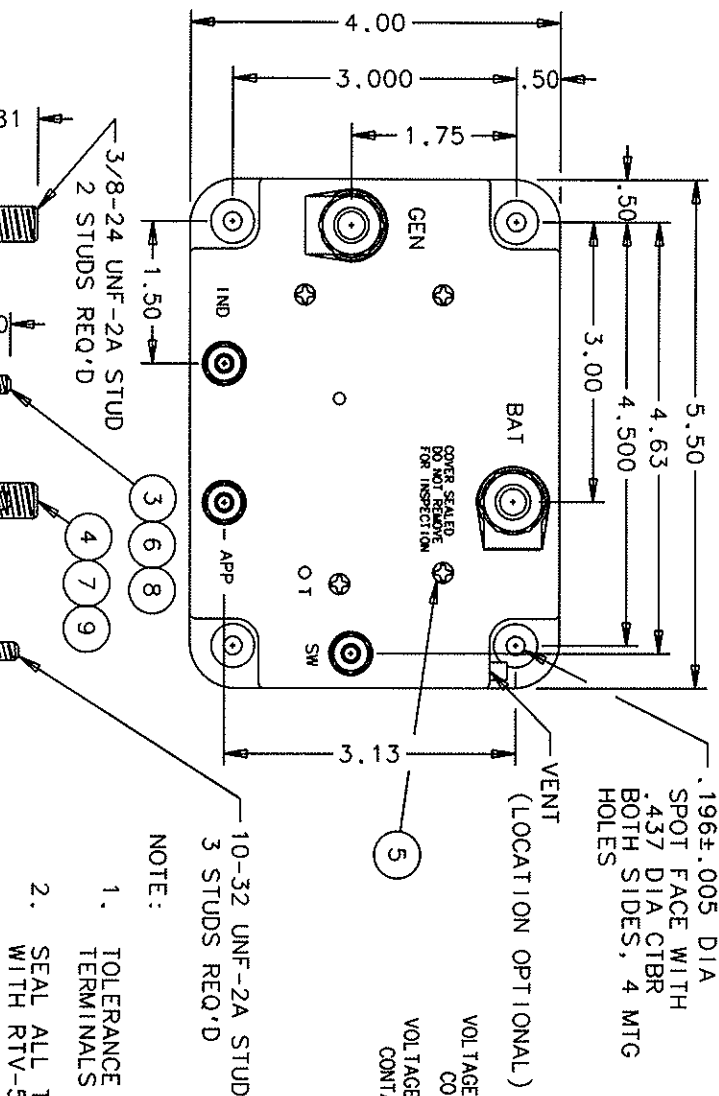


| REV. | DESCRIPTION | DATE | APPROVED |
|---------|--------------------------|----------|----------|
| H 22814 | ITEM 2 WAS 16043-001 | 93/02/17 | WS |
| J 25173 | ADD TOLERANCES | 93/03/23 | WS |
| K 31152 | FIND NO 11 ADDED | 96/10/07 | RS |
| L 42228 | FIND NO 10 WAS 33384-010 | 00/04/17 | RS |



- NOTE:
1. TOLERANCE ON ALL TERMINALS TO BE ± .06
 2. SEAL ALL THROUGH HOLES WITH RTV-54100-005

| FIND NO | QTY | PART OR IDENTIFYING NO | DESCRIPTION | FORM NO | DRAWING OR SPECIFICATION | MATERIAL OR NOTE |
|---------|-----|------------------------|--------------------------------|---------|--------------------------|-------------------|
| 11 | 1 | 39529-001 | OVERLAY | | | |
| 10 | 1 | 33384-040 | CUTOUT ASSEMBLY PRIMARY | | | |
| 9 | 2 | 51807-071 | WASHER, SPLIT 3/8x.688x.094 | | | AN935-616 STEEL |
| 8 | 3 | 51810-031 | WASHER, SPLIT No. 10x.337x.047 | | | AN935-10 STEEL |
| 7 | 2 | 51704-161 | WASHER, FLAT 5/8x.390x.064 | | | AN960-616 STEEL |
| 6 | 3 | 51702-851 | WASHER, FLAT 7/16x13/64x.032 | | | AN960-10L STEEL |
| 5 | 4 | 51200-020 | SCREW No. 4x1/4 PAN HD | | | S.S. |
| 4 | 2 | 50407-166 | NUT, HEX 3/8-24x5/8x7/32 | | | MS20365-616 BRASS |
| 3 | 3 | 50410-086 | NUT, HEX 10-32x3/8x1/8 | | | MS20365-10 BRASS |
| 2 | 1 | 16043-022 | PLATE-NAME | | | |
| 1 | 1 | 07597-000 | PLATE COVER-BASE INSULATION | | | |

NOMINAL VOLTAGE 28 VOLTS DC
 CURRENT RATING 600 AMP
 REVERSE CURRENT SETTINGS 18 - 35 AMP
 MAX WEIGHT 3.9 LBS

| | | | |
|---|-------|--|--|
| UNLESS OTHERWISE SPECIFIED DIMENSIONS ARE IN INCHES | | HARTMAN ELECTRICAL MANUFACTURING MAANSFIELD, OHIO | |
| 2 PL. DEC. 13 PL. DEC. JANGLES | 1.016 | 1.005 | 1.1* |
| DR BY | RLS | 00/05/01 | CUTOUT - REVERSE CURRENT 24 VOLT DC SYSTEM 093 |
| CHK BY | RS | 06/05/01 | |
| ENGR | RS | 06/05/01 | |
| MF G | RS | 06/05/01 | |
| RELEASE | | | SCALE NONE |
| CONTR NO. | | | |
| GOVT APPL | | | |