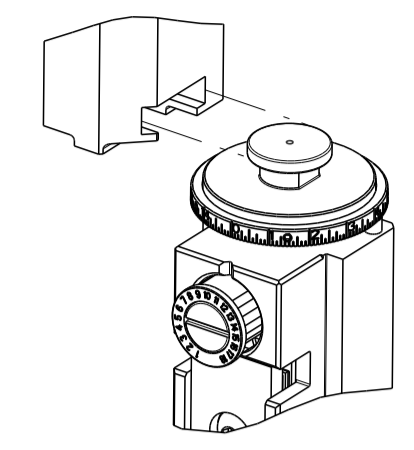


| PART NUMBER | REVISION | DESCRIPTION | FEED TYPE |
|-------------|----------|--|------------|
| 2151965-1 | E | FINE CRIMP HEIGHT ADJUST | MECHANICAL |
| 2151965-2 | F | FINE CRIMP HEIGHT ADJUST | PNEUMATIC |
| 5-2151965-1 | E | SEAL STRIPPER CRIMPER TERMINATING UNIT | MECHANICAL |
| 5-2151965-2 | F | SEAL STRIPPER CRIMPER TERMINATING UNIT | PNEUMATIC |
| 7-2151965-1 | E | MECHANICAL AND CRIMP TOOLING KIT | MECHANICAL |
| 7-2151965-2 | F | PNEUMATIC AND CRIMP TOOLING KIT | PNEUMATIC |
| 7-2151965-7 | D | CRIMP TOOLING KIT | - |

ATLANTIC VERSION TERMINATOR INTERFACE ADAPTER



| APPLICATOR DATA | | |
|-----------------|----------------|------|
| CRIMP | SIZE | TYPE |
| WIRE | 1.68 mm [.066] | F |
| INSUL | 3.40 mm [.134] | O |

APPLICATOR INSTRUCTIONS 408-35042

| TERMINAL DATA: YAZAKI TERMINAL YAZAKI CRIMP SPECIFICATION | |
|---|---------------------------|
| TERMINAL NAME: 1.5 SYSTEM SEALED CONNECTOR, MALE | |
| WIRE STRIP LENGTH | INSULATION DIAMETER RANGE |
| 5.00-5.50 mm [.197-.217 IN] | Ø |
| TERMINAL APPLICATION SPECIFICATION | (A)72-WT08-767 Rev WA1927 |

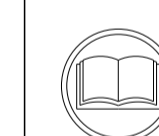
| TERMINALS APPLIED | | | | |
|-------------------|-------------------------|-----------|-----------------|--------------------------------|
| TE TERMINAL | YAZAKI TERMINAL | TE SEAL | YAZAKI SEAL | SEAL INSULATION DIAMETER RANGE |
| (A) 1655086-1 | (A) 7114-4102-02 | 1572025-1 | 7158-3030-50 | 1.2-1.7 |
| (A) 1655086-2 | (A) 7114-4102-08 | 1572025-2 | 7158-3030-90 | 1.2-1.7 |
| (A) 1642494-1 | (A) 7114-4102-02 | 1832579-1 | 7158-3031-90 | 1.63-2.40 |
| (A) 1557065-1 | (A) FORD-97BG-14421-AHA | 1642495-1 | 7158-3031-90 | 1.63-2.40 |
| (A) 2434978-1 | (A) 7114-4102-06 | TE SEAL | FORD SEAL | |
| | | 1949248-1 | 97BG-10C930-SBA | 1.19-1.65 |
| | | 1448692-1 | XW43-14603-AA | 1.6-2.0 |

| TERMINAL DATA: YAZAKI TERMINAL YAZAKI CRIMP SPECIFICATION | |
|---|----------------------------|
| TERMINAL NAME: 1.5 SYSTEM SEALED CONNECTOR, FEMALE | |
| WIRE STRIP LENGTH | INSULATION DIAMETER RANGE |
| 5.00-5.50 mm [.197-.217 IN] | Ø |
| TERMINAL APPLICATION SPECIFICATION | (B)72-WT10-1635 Rev WA1986 |

| TERMINALS APPLIED | | | | |
|-------------------|------------------|-----------|-----------------|--------------------------------|
| TE TERMINAL | YAZAKI TERMINAL | TE SEAL | YAZAKI SEAL | SEAL INSULATION DIAMETER RANGE |
| (B) 1832234-1 | (B) 7116-4102-02 | 1572025-1 | 7158-3030-50 | 1.2-1.7 |
| (B) 1448691-1 | (B) 7116-4102-08 | 1572025-2 | 7158-3030-90 | 1.2-1.7 |
| (B) 1572024-3 | (B) 7116-4102-06 | 1832579-1 | 7158-3031-90 | 1.63-2.40 |
| | | 1642495-1 | 7158-3031-90 | 1.63-2.40 |
| | | TE SEAL | FORD SEAL | |
| | | 1949248-1 | 97BG-10C930-SBA | 1.19-1.65 |
| | | 1448692-1 | XW43-14603-AA | 1.6-2.0 |

| WIRE SIZE | CRIMP HEIGHT mm [INCH] | CRIMP HEIGHT REFERENCE SETTING |
|--------------------|----------------------------|--------------------------------|
| 0.50mm2 | 1.05+/-0.05 [.041+/-0.002] | 7.7 |
| 0.30mm2 OR 0.35mm2 | 1.00+/-0.05 [.039+/-0.002] | 8.2 |

| WIRE SIZE | CRIMP HEIGHT mm [INCH] | CRIMP HEIGHT REFERENCE SETTING |
|-----------|----------------------------|--------------------------------|
| 0.50mm2 | 1.00+/-0.05 [.039+/-0.002] | 8.8 |
| 0.35mm2 | 0.95+/-0.05 [.037+/-0.002] | 9.3 |
| 0.30mm2 | 0.90+/-0.04 [.035+/-0.002] | 9.9 |



- 1 RECOMMENDED SPARE PARTS
- 2 REFER TO SUPPLIED INSTRUCTION SHEET FOR CLEANING, LUBRICATION AND STORAGE OF APPLICATOR.
- 3 APPLY PART NUMBER 2-23419-6 LOCTITE TO THREADS OF ITEM 242. APPLY PART NUMBER 1-23419-5 LOCTITE TO THREADS OF ITEM 180.
- 4 CRIMP HEIGHT REFERENCE SETTING WAS THE SETTING USED WHEN THE APPLICATOR WAS QUALIFIED AT THE FACTORY. ADJUSTMENT MAY BE NECESSARY WHEN RUNNING APPLICATOR IN THE FIELD.
- 5 TERMINAL LUBRICANT IS RECOMMENDED.
- 6 UNLESS SPECIFIED OTHERWISE TORQUE VALUES SHALL BE USED PER DOCUMENT, 101-35000.
- 7 APPLY TORQ-SEAL IN ALLEN SOCKET TO FILL HOLE AFTER FLAT HD HAS BEEN ADJUSTED TO CORRECT HEIGHT AT QUALIFICATION. APPLY #1-23419-5 LOC-TITE TO THREADS.

***WARNING**
ON INSTALLATION, SET WIRE DISC TO CRIMP HEIGHT REFERENCE SETTING FOR LARGEST WIRE SIZE. CRIMP HEIGHT REFERENCE SETTINGS GREATER THAN THE VALUE SHOWN MAY CAUSE DAMAGE TO THE CRIMP TOOLING. REFER TO THE INSTRUCTION SHEET FOR PROPER SETUP AND ADJUSTMENTS.

| LOC | DIST | REVISIONS | | | | | |
|-----|------|-----------|-----|---------------|-----------|-----|------|
| A | 66 | P | LTN | DESCRIPTION | DATE | OWN | APVD |
| | | E | | ECR-18-012418 | 04AUG2018 | TB | TE |
| | | F | | ECR-19-011449 | 21JUL2019 | TB | TE |
| | | F1 | | ECR-20-016066 | 11NOV2020 | LG | TE |
| | | F2 | | ECR-22-155910 | 18OCT2022 | FZ | JAH |

| | | | | | | | | | |
|---|-----|-----|-----|-----|-----|-----|-------------|-------------------------------------|-----|
| - | - | - | 1 | 1 | - | - | 1803515-3 | RAM ASSEMBLY, SF ATLANTIC | 293 |
| - | - | - | 1 | 1 | - | - | 2-1803583-1 | APPLICATOR BASIC ASSEMBLY, SF | 292 |
| - | 1 | - | 1 | - | 1 | - | 2119641-1 | FEED CAM, AIR FEED | 248 |
| - | 1 | 1 | 1 | 1 | 1 | 1 | 2119082-2 | CAM, SNAIL, INSULATION ADJUSTMENT | 244 |
| - | 1 | 1 | 1 | 1 | 1 | 1 | 2079764-1 | WASHER, WAVE SPRING, CREST-TO-CREST | 243 |
| - | 1 | 1 | 1 | 1 | 1 | 1 | 2119083-1 | RETAINER, INSULATION DIAL | 242 |
| - | 1 | 1 | 1 | 1 | 1 | 1 | 7-18023-7 | SCR, SKT HD CAP M3 X 4.0 | 241 |
| - | - | 1 | - | 1 | - | 1 | 2119580-1 | MECHANICAL FEED ASSEMBLY | 239 |
| - | 1 | - | 1 | - | 1 | - | 2844940-1 | AIR FEED MODULE | 238 |
| - | - | - | 1 | 1 | - | - | 4-1722335-3 | STRIPPER, SIDE FEED | 182 |
| - | - | - | 1 | 1 | - | - | 1-5018030-0 | NUT, HEX, REG, RoHS, M3.5 | 181 |
| - | - | - | 1 | 1 | - | - | 2-1752354-2 | STANDOFF, HOLD-DOWN | 180 |
| - | - | - | 1 | 1 | - | - | 993111-1 | PIN, SLOTTED SPRING 3.0 X 20.0 | 177 |
| - | - | - | 1 | 1 | - | - | 5-22280-0 | SPRING, COMPRESSION | 176 |
| - | - | - | 1 | 1 | - | - | 1752353-3 | GUIDE PIN, HOLDDOWN | 175 |
| - | - | - | 1 | 1 | - | - | 1901680-2 | GUIDE PIN, HOLDDOWN | 174 |
| - | REF | REF | REF | REF | REF | REF | 994970-2 | COUNTER, MAGNETIC | 164 |
| - | 1 | 1 | 1 | 1 | 1 | 1 | 1-22281-8 | SPRING, COMPRESSION | 121 |
| - | 1 | 1 | 1 | 1 | 1 | 1 | 1-18028-2 | WASHER, FLAT, REG M4 | 119 |
| - | 1 | 1 | 1 | 1 | 1 | 1 | 2119955-1 | ASSY, LUBRICATOR, SIDE FEED | 113 |
| - | 1 | 1 | 1 | 1 | 1 | 1 | 2844908-1 | SCREW, LOCKING | 99 |
| - | 1 | 1 | 1 | 1 | 1 | 1 | 2844907-1 | POST, LOCKING | 98 |
| - | 1 | 1 | 1 | 1 | 1 | 1 | 1-690438-6 | FRONT STRIP GUIDE | 96 |
| - | 2 | 2 | 2 | 2 | 2 | 2 | 2168083-1 | SCR, SKT HD CAP, RoHS, M3 X 8.0 | 95 |
| - | 1 | 1 | 1 | 1 | 1 | 1 | 2168083-6 | SCR, SKT HD CAP, RoHS, M5 X 65 | 93 |
| - | 1 | 1 | 1 | 1 | 1 | 1 | 455888-4 | SPACER, CRIMPER | 82 |
| - | 1 | 1 | 1 | 1 | 1 | 1 | 1803607-3 | DOCUMENTATION PACKAGE | 71 |
| - | 1 | 1 | 1 | 1 | 1 | 1 | 2119740-1 | TAG, IDENTIFICATION | 67 |
| - | 2 | 2 | 2 | 2 | 2 | 2 | 2168078-1 | SCREW, DRIVE, RH, RoHS, 2 x .188 | 66 |
| - | 2 | 2 | 2 | 2 | 2 | 2 | 2-18032-5 | SCR, SET, FLT PNT, M5 X 20.0 | 61 |
| - | 1 | 1 | 1 | 1 | 1 | 1 | 2168083-2 | SCR, SKT HD CAP, RoHS, M4 X 8.0 | 60 |
| - | 1 | 1 | 1 | 1 | 1 | 1 | 5-18022-5 | SCR, HEX HD CAP, M4 X 6.0 | 59 |
| - | 1 | 1 | 1 | 1 | 1 | 1 | 985575-3 | SCR, FLT SKT HD CAP M3 X 10.0 | 57 |
| - | 1 | 1 | 1 | 1 | 1 | 1 | 1338685-1 | PAWL, FEED | 56 |
| - | 4 | 4 | 4 | 4 | 4 | 4 | 2168083-3 | SCR, SKT HD CAP, RoHS, M4 X 12.0 | 54 |
| - | 2 | 2 | 2 | 2 | 2 | 2 | 2168083-3 | SCR, SKT HD CAP, RoHS, M4 X 12.0 | 53 |
| - | 1 | 1 | 1 | 1 | 1 | 1 | 1803382-2 | HOLD DOWN, SPRING LOADED | 50 |
| - | 1 | 2 | 1 | 2 | 1 | 2 | 18023-9 | SCR, SKT HD CAP M4 X 6.0 | 49 |
| - | - | 1 | - | 1 | - | 1 | 2119652-1 | FEED CAM, PRE FEED | 48 |
| - | - | 1 | - | 1 | - | 1 | 2119653-1 | FEED CAM, POST FEED | 47 |
| - | 1 | 1 | - | - | 1 | 1 | 1803583-9 | APPLICATOR BASIC ASSEMBLY, SF | 46 |
| - | 1 | 1 | - | - | 1 | 1 | 1803515-1 | RAM ASSEMBLY, SF ATLANTIC | 44 |
| - | 1 | 1 | 1 | 1 | 1 | 1 | 1803602-1 | SCR, BHSC, RoHS (M8 X 25) | 41 |
| - | 1 | 1 | 1 | 1 | 1 | 1 | 1752356-3 | SUPPORT, TERMINAL | 34 |
| - | 2 | 2 | 2 | 2 | 2 | 2 | 2079383-5 | SCR, BHSC, RoHS (M4 X 20) | 33 |
| - | 2 | 2 | 2 | 2 | 2 | 2 | 3-2844962-0 | SPACER, CYLINDRICAL, STRIP GUIDE | 30 |
| - | 1 | 1 | 1 | 1 | 1 | 1 | 2844938-5 | PLATE, STRIP GUIDE | 29 |
| - | 1 | 1 | 1 | 1 | 1 | 1 | 455888-3 | SPACER, CRIMPER | 28 |
| - | 2 | 2 | 2 | 2 | 2 | 2 | 22281-8 | SPRING, COMPRESSION | 27 |
| - | 1 | 1 | 1 | 1 | 1 | 1 | 356835-1 | LEVER, DRAG RELEASE | 26 |
| - | 1 | 1 | 1 | 1 | 1 | 1 | 240792-2 | DRAG, TERMINAL | 25 |
| - | 1 | 1 | 1 | 1 | 1 | 1 | 1320928-6 | STRIP GUIDE | 24 |
| - | 1 | 1 | 1 | 1 | 1 | 1 | 980371-4 | SCR, SKT HD SHLDR 5.0 DIA X 6.0 | 23 |
| - | 1 | 1 | - | - | 1 | 1 | 2168083-2 | SCR, SKT HD CAP, RoHS, M4 X 8.0 | 21 |
| - | 2 | 2 | 1 | 1 | 2 | 2 | 1-18028-2 | WASHER, FLAT, REG M4 | 20 |
| - | 1 | 1 | - | - | 1 | 1 | 2119533-1 | STRIPPER, SIDE FEED | 19 |
| - | 1 | 1 | 1 | 1 | 1 | 1 | 2119806-1 | INSERT, SHEAR | 13 |
| - | 1 | 1 | 1 | 1 | 1 | 1 | 3-22280-3 | SPRING, COMPRESSION | 12 |
| - | 1 | 1 | 1 | 1 | 1 | 1 | 1-356885-4 | STOP, SHEAR | 11 |
| - | 1 | 1 | 1 | 1 | 1 | 1 | 2119805-1 | SHEAR HOLDER, FRONT | 10 |
| - | 1 | 1 | 1 | 1 | 1 | 1 | 318707-1 | FLOATING SHEAR, FRONT | 9 |
| - | 1 | 2 | 2 | 1 | 1 | 1 | 4-1633927-8 | ANVIL, COMBINATION | 8 |
| - | 1 | 1 | 1 | 1 | 1 | 1 | 1-240641-1 | SPACER | 7 |
| - | - | - | - | - | - | - | - | - | 6 |
| - | 1 | 1 | 1 | 1 | 1 | 1 | 2119781-1 | DEPRESSOR, SHEAR | 5 |
| - | 1 | 1 | 1 | 1 | 1 | 1 | 5-238011-5 | BLOCK, CRIMPER SPACER | 4 |
| - | 1 | 2 | 2 | 1 | 1 | 1 | 1803018-3 | CRIMPER, INSULATION O | 3 |
| - | 1 | 1 | 1 | 1 | 1 | 1 | 1-455888-1 | SPACER, CRIMPER | 2 |
| - | 1 | 2 | 2 | 1 | 1 | 1 | 1490019-2 | CRIMPER, WIRE PREMIUM | 1 |

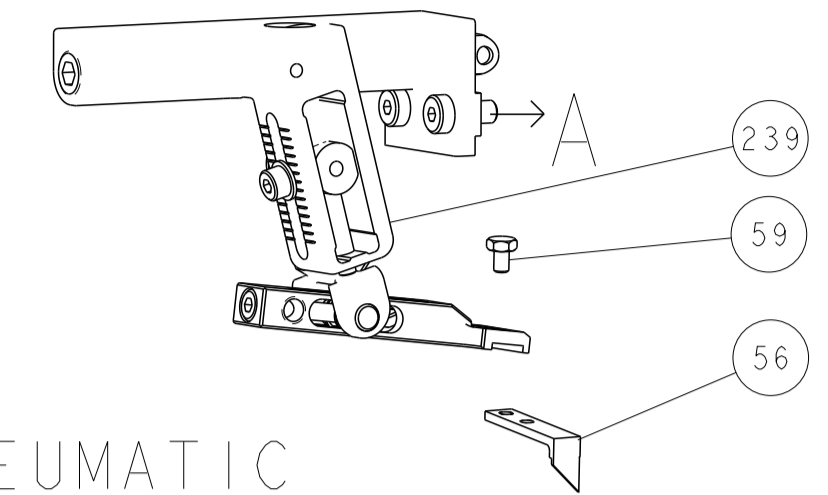
ATLANTIC VERSION
Shown on sheets 1 of 4 & 2 of 4
(Pacific version shown on sheets 3 of 4 & 4 of 4)

| ITEM NO | PART NO | DESCRIPTION | ITEM NO |
|---------|---------|-------------|---------|
| -77 | -72 | -71 | -52 |
| -51 | -2 | -1 | |

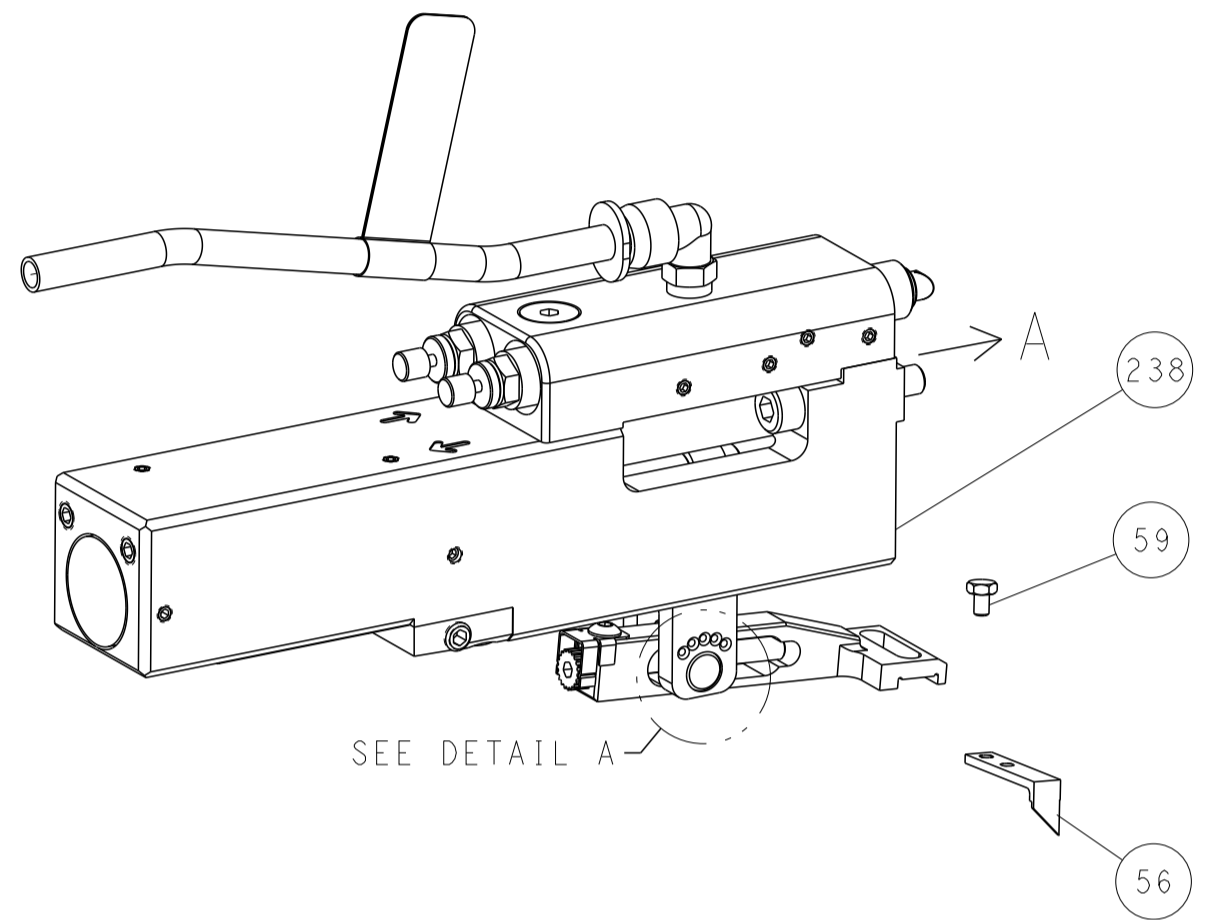
| | | | |
|-----------------------|--|--|---|
| DIMENSIONS: mm | TOLERANCES UNLESS OTHERWISE SPECIFIED: 0 PLC ± 1 PLC ± 3 PLC ± 4 PLC ± ANGLES ± FINISH | OWN: R.O. WILSON 22MAY2013 CHK: K. J. STAKEM 22MAY2013 APVD: T. L. ELBIN 22MAY2013 PRODUCT SPEC APPLICATION SPEC WEIGHT: A1 SCALE: 1:2 SHEET: 1 of 4 REV: F2 | NAME: Ocean Side Feed Applicator SIZE: A1 CASE CODE: 00779 DRAWING NO: C=2151965 RESTRICTED TO: |
|-----------------------|--|--|---|

| LOC | DIST | REVISIONS | | | | | |
|-----|------|-----------|-----|-------------|------|-----|------|
| A | 66 | P | LYR | DESCRIPTION | DATE | OWN | APVD |
| | | - | | SEE SHEET 1 | - | - | - |

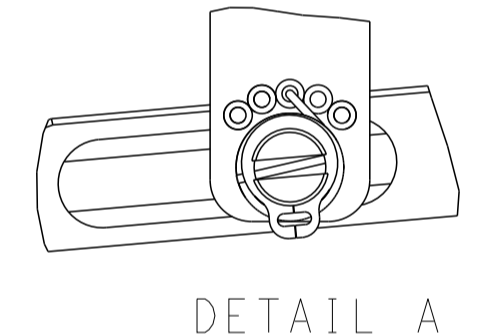
FEED TYPE MECHANICAL



PNEUMATIC

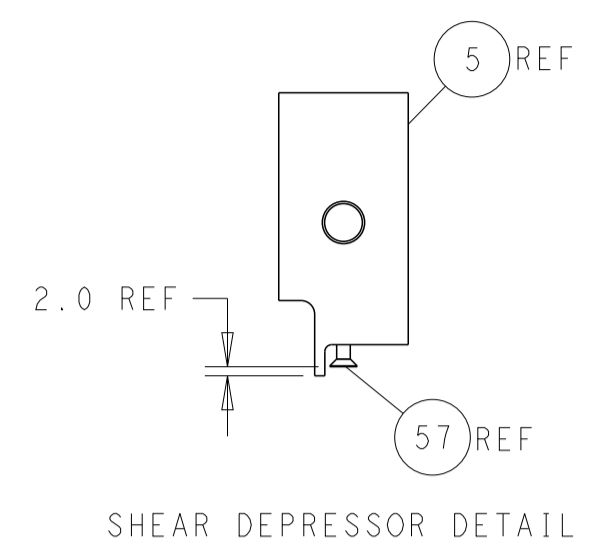
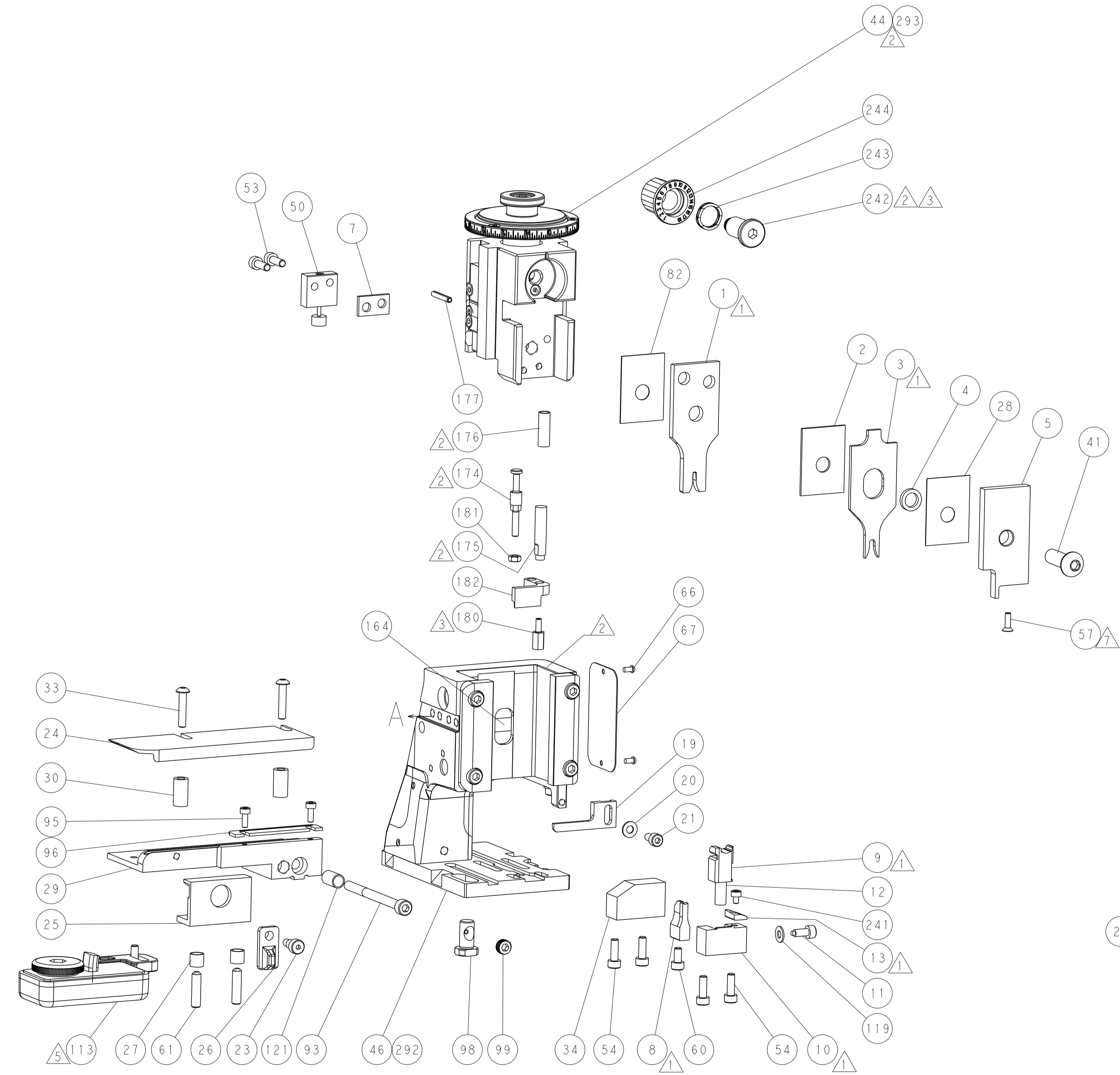
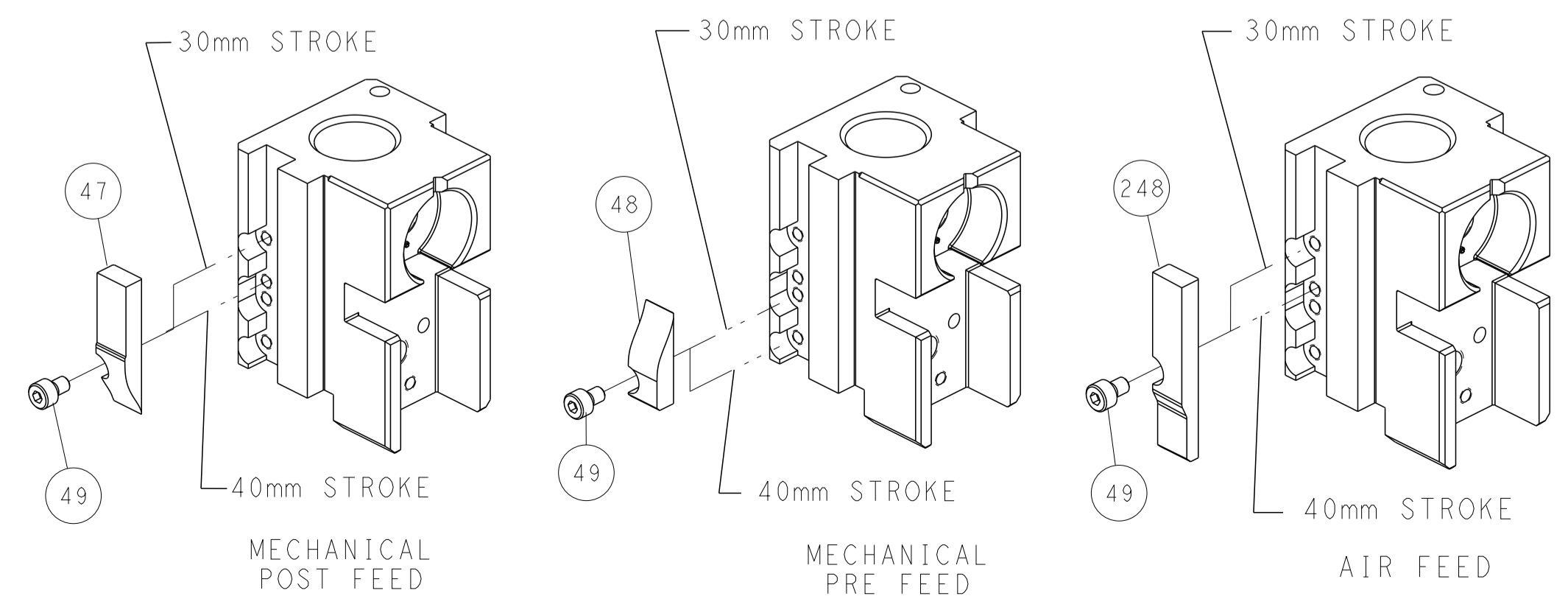


FEED SPRING SETTING POSITION (SHOWN FROM REAR SIDE)

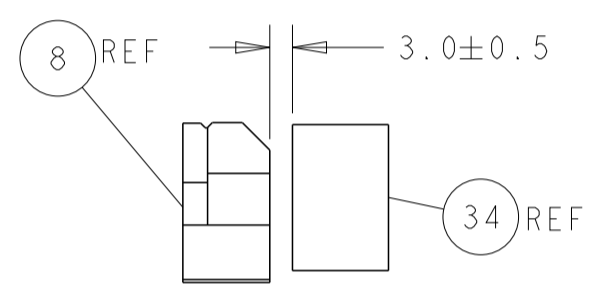


DETAIL A

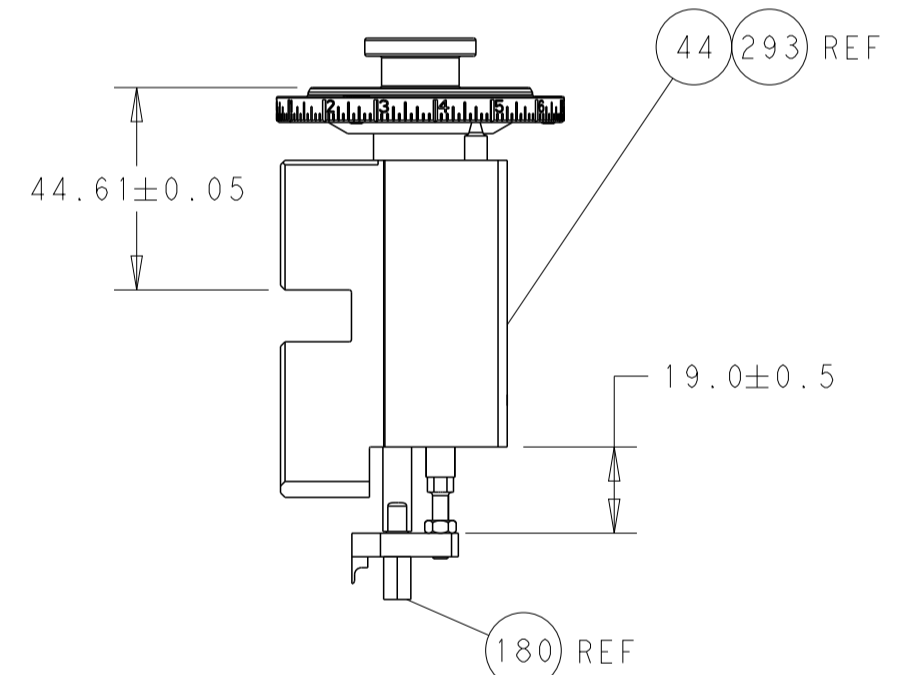
CAM POSITIONS



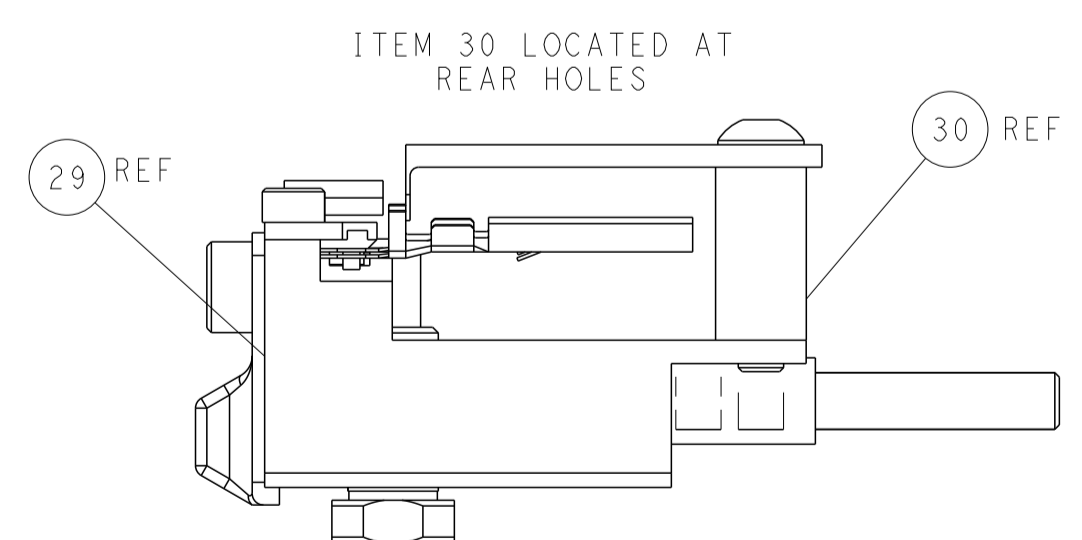
SHEAR DEPRESSOR DETAIL



TERMINAL SUPPORT LOCATION



RAM AND HOLDDOWN SET-UP



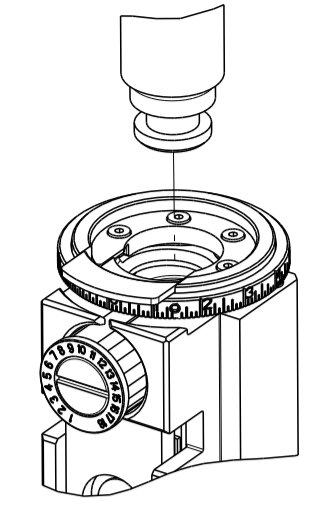
FEED TRACK POSITION GUIDE BY INSULATION BARREL

ATLANTIC VERSION
 Shown on sheets 1 of 4 & 2 of 4
 (Pacific version shown on sheets 3 of 4 & 4 of 4)

| | | | | | | | |
|--|--|---|--|---|--|---|--|
| DIMENSIONS: mm | | TOLERANCES UNLESS OTHERWISE SPECIFIED: 0 PLC ± 1 PLC ± 2 PLC ± 3 PLC ± 4 PLC ± ANGLES ± | | DWN R.O. WILSON 22MAY2013 CHK K.J. STAKEM 22MAY2013 APVD T.L. ELBIN 22MAY2013 | | NAME Ocean Side Feed Applicator | |
| MATERIAL: | | FINISH: | | WEIGHT: | | SIZE: A1 CAGE CODE: 00779 DRAWING NO: C=2151965 | |
| Customer Accessible Production Drawing | | | | SCALE: 1:2 | | SHEET 2 OF 4 REV F2 | |

| PART NUMBER | REVISION | DESCRIPTION | FEED TYPE |
|-------------|----------|--------------------------|------------|
| 2-2151965-1 | E | FINE CRIMP HEIGHT ADJUST | MECHANICAL |
| 2-2151965-2 | F | FINE CRIMP HEIGHT ADJUST | PNEUMATIC |
| 7-2151965-7 | D | CRIMP TOOLING KIT | - |

PACIFIC VERSION TERMINATOR
 INTERFACE ADAPTER



| APPLICATOR DATA | | |
|-----------------|----------------|------|
| CRIMP | SIZE | TYPE |
| WIRE | 1.68 mm [.066] | F |
| INSUL | 3.40 mm [1.34] | O |

APPLICATOR INSTRUCTIONS
 408-35042

TERMINAL DATA: YAZAKI TERMINAL YAZAKI CRIMP SPECIFICATION
 TERMINAL NAME: 1.5 SYSTEM SEALED CONNECTOR, MALE

| WIRE STRIP LENGTH | INSULATION DIAMETER RANGE |
|-----------------------------|---------------------------|
| 5.00-5.50 mm [1.97-.217 IN] | Ø |

TERMINAL APPLICATION SPECIFICATION (A)72-WT08-767 Rev WA1927

TERMINALS APPLIED

| TE TERMINAL | YAZAKI TERMINAL | TE SEAL | YAZAKI SEAL | SEAL INSULATION DIAMETER RANGE |
|---------------|-------------------------|-----------|-----------------|--------------------------------|
| (A) 1655086-1 | (A) 7114-4102-02 | 1572025-1 | 7158-3030-50 | 1.2-1.7 |
| (A) 1655086-2 | (A) 7114-4102-08 | 1572025-2 | 7158-3030-90 | 1.2-1.7 |
| (A) 1642494-1 | (A) 7114-4102-02 | 1832579-1 | 7158-3031-90 | 1.63-2.40 |
| (A) 1557065-1 | (A) FORD-97BG-14421-AHA | 1642495-1 | 7158-3031-90 | 1.63-2.40 |
| (A) 2434978-1 | (A) 7114-4102-06 | TE SEAL | FORD SEAL | |
| | | 1949248-1 | 97BG-10C930-SBA | 1.19-1.65 |
| | | 1448692-1 | XW43-14603-AA | 1.6-2.0 |

| WIRE SIZE | CRIMP HEIGHT mm [INCH] | CRIMP HEIGHT REFERENCE SETTING |
|--------------------|----------------------------|--------------------------------|
| 0.50mm2 | 1.05+/-0.05 [.041+/-0.002] | 7.7 |
| 0.30mm2 OR 0.35mm2 | 1.00+/-0.05 [.039+/-0.002] | 8.2 |

- RECOMMENDED SPARE PARTS
- REFER TO SUPPLIED INSTRUCTION SHEET FOR CLEANING, LUBRICATION AND STORAGE OF APPLICATOR.
- APPLY PART NUMBER 2-23419-6 LOCTITE TO THREADS OF ITEM 242.
- CRIMP HEIGHT REFERENCE SETTING WAS THE SETTING USED WHEN THE APPLICATOR WAS QUALIFIED AT THE FACTORY. ADJUSTMENT MAY BE NECESSARY WHEN RUNNING APPLICATOR IN THE FIELD.
- TERMINAL LUBRICANT IS RECOMMENDED.
- UNLESS SPECIFIED OTHERWISE TORQUE VALUES SHALL BE USED PER DOCUMENT, 101-35000.
- APPLY TORQ-SEAL IN ALLEN SOCKET TO FILL HOLE AFTER FLAT HD HAS BEEN ADJUSTED TO CORRECT HEIGHT AT QUALIFICATION. APPLY #1-23419-5 LOC-TITE TO THREADS.

TERMINAL DATA: YAZAKI TERMINAL YAZAKI CRIMP SPECIFICATION
 TERMINAL NAME: 1.5 SYSTEM SEALED CONNECTOR, FEMALE

| WIRE STRIP LENGTH | INSULATION DIAMETER RANGE |
|-----------------------------|---------------------------|
| 5.00-5.50 mm [1.97-.217 IN] | Ø |

TERMINAL APPLICATION SPECIFICATION (B)72-WT10-1635 Rev WA1986

TERMINALS APPLIED

| TE TERMINAL | YAZAKI TERMINAL | TE SEAL | YAZAKI SEAL | SEAL INSULATION DIAMETER RANGE |
|---------------|------------------|-----------|-----------------|--------------------------------|
| (B) 1832234-1 | (B) 7116-4102-02 | 1572025-1 | 7158-3030-50 | 1.2-1.7 |
| (B) 1448691-1 | (B) 7116-4102-08 | 1572025-2 | 7158-3030-90 | 1.2-1.7 |
| (B) 1572024-3 | (B) 7116-4102-06 | 1832579-1 | 7158-3031-90 | 1.63-2.40 |
| | | 1642495-1 | 7158-3031-90 | 1.63-2.40 |
| | | TE SEAL | FORD SEAL | |
| | | 1949248-1 | 97BG-10C930-SBA | 1.19-1.65 |
| | | 1448692-1 | XW43-14603-AA | 1.6-2.0 |

| WIRE SIZE | CRIMP HEIGHT mm [INCH] | CRIMP HEIGHT REFERENCE SETTING |
|-----------|----------------------------|--------------------------------|
| 0.50mm2 | 1.00+/-0.05 [.039+/-0.002] | 8.8 |
| 0.35mm2 | 0.95+/-0.05 [.037+/-0.002] | 9.3 |
| 0.30mm2 | 0.90+/-0.04 [.035+/-0.002] | 9.9 |

***WARNING**
 ON INSTALLATION, SET WIRE DISC TO CRIMP HEIGHT REFERENCE SETTING FOR LARGEST WIRE SIZE. CRIMP HEIGHT REFERENCE SETTINGS GREATER THAN THE VALUE SHOWN MAY CAUSE DAMAGE TO THE CRIMP TOOLING. REFER TO THE INSTRUCTION SHEET FOR PROPER SETUP AND ADJUSTMENTS.

PACIFIC VERSION
 Shown on sheets 3 of 4 & 4 of 4
 (Atlantic version shown on sheets 1 of 4 & 2 of 4)

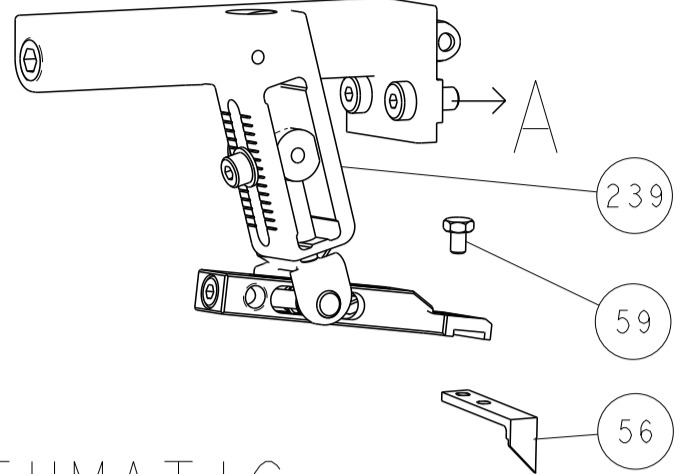
| LOC | DIST | REV | DATE | BY | APPD |
|-----|------|-----|------|----|------|
| A | 66 | - | - | - | - |

| REF | REF | QTY | DESCRIPTION | DATE | OWN | APPD |
|-----|-----|-----|---|------|-----|------|
| - | 1 | 1 | 2119082-2 CAM, SNAIL, INSULATION ADJUSTMENT | | | 244 |
| - | 1 | 1 | 2079764-1 WASHER, WAVE SPRING, CREST-TO-CREST | | | 243 |
| - | 1 | 1 | 2119083-1 RETAINER, INSULATION DIAL | | | 242 |
| - | 1 | 1 | 7-18023-7 SCR, SKT HD CAP M3 X 4.0 | | | 241 |
| - | - | 1 | 2119580-1 MECHANICAL FEED ASSEMBLY | | | 239 |
| - | 1 | - | 2844940-1 AIR FEED MODULE | | | 238 |
| - | REF | REF | 994970-2 COUNTER, MAGNETIC | | | 164 |
| - | 1 | - | 2119641-2 FEED CAM, AIR FEED | | | 151 |
| - | 1 | 1 | 2168083-8 SCR, SKT HD CAP, RoHS, M4 X 16 | | | 144 |
| - | 4 | 4 | 2168083-9 SCR, SKT HD CAP, RoHS, M4 X 20 | | | 143 |
| - | - | 1 | 2119653-2 FEED CAM, POST FEED | | | 142 |
| - | 1 | 1 | 1-1803583-0 APPLICATOR BASIC ASSEMBLY, SF | | | 141 |
| - | 1 | 1 | 1803516-1 RAM ASSEMBLY, SF PACIFIC | | | 140 |
| - | 1 | 1 | 1-22281-8 SPRING, COMPRESSION | | | 121 |
| - | 1 | 1 | 1-18028-2 WASHER, FLAT, REG M4 | | | 119 |
| - | 1 | 1 | 2119955-1 ASSY, LUBRICATOR, SIDE FEED | | | 113 |
| - | 1 | 1 | 2844908-1 SCREW, LOCKING | | | 99 |
| - | 1 | 1 | 2844907-1 POST, LOCKING | | | 98 |
| - | 1 | 1 | 1-690438-6 FRONT STRIP GUIDE | | | 96 |
| - | 2 | 2 | 2168083-1 SCR, SKT HD CAP, RoHS, M3 X 8.0 | | | 95 |
| - | 1 | 1 | 2168083-6 SCR, SKT HD CAP, RoHS, M5 X 65 | | | 93 |
| - | 1 | 1 | 455888-4 SPACER, CRIMPER | | | 82 |
| - | 1 | 1 | 1803607-3 DOCUMENTATION PACKAGE | | | 71 |
| - | 1 | 1 | 2119740-1 TAG, IDENTIFICATION | | | 67 |
| - | 2 | 2 | 2168078-1 SCREW, DRIVE, RH, RoHS, 2 x .188 | | | 66 |
| - | 2 | 2 | 2-18032-5 SCR, SET, FLT PNT, M5 X 20.0 | | | 61 |
| - | 1 | 1 | 5-18022-5 SCR, HEX HD CAP, M4 X 6.0 | | | 59 |
| - | 1 | 1 | 985575-3 SCR, FLT SKT HD CAP M3 X 10.0 | | | 57 |
| - | 1 | 1 | 1338685-1 PAWL, FEED | | | 56 |
| - | 2 | 2 | 2168083-3 SCR, SKT HD CAP, RoHS, M4 X 12.0 | | | 53 |
| - | 1 | 1 | 1803382-2 HOLD DOWN, SPRING LOADED | | | 50 |
| - | 1 | 2 | 18023-9 SCR, SKT HD CAP M4 X 6.0 | | | 49 |
| - | - | 1 | 2119652-1 FEED CAM, PRE FEED | | | 48 |
| - | 1 | 1 | 1803602-1 SCR, BHSC, RoHS (M8 X 25) | | | 41 |
| - | 1 | 1 | 1752356-3 SUPPORT, TERMINAL | | | 34 |
| - | 2 | 2 | 2079383-5 SCR, BHSC, RoHS (M4 X 20) | | | 33 |
| - | 2 | 2 | 3-2844962-0 SPACER, CYLINDRICAL, STRIP GUIDE | | | 30 |
| - | 1 | 1 | 2844938-5 PLATE, STRIP GUIDE | | | 29 |
| - | 1 | 1 | 455888-3 SPACER, CRIMPER | | | 28 |
| - | 2 | 2 | 22281-8 SPRING, COMPRESSION | | | 27 |
| - | 1 | 1 | 356835-1 LEVER, DRAG RELEASE | | | 26 |
| - | 1 | 1 | 240792-2 DRAG, TERMINAL | | | 25 |
| - | 1 | 1 | 1320928-6 STRIP GUIDE | | | 24 |
| - | 1 | 1 | 980371-4 SCR, SKT HD SHLDR 5.0 DIA X 6.0 | | | 23 |
| - | 1 | 1 | 2168083-2 SCR, SKT HD CAP, RoHS, M4 X 8.0 | | | 21 |
| - | 1 | 1 | 1-18028-2 WASHER, FLAT, REG M4 | | | 20 |
| - | 1 | 1 | 2119533-1 STRIPPER, SIDE FEED | | | 19 |
| - | 1 | 1 | 2119806-1 INSERT, SHEAR | | | 13 |
| - | 1 | 1 | 3-22280-3 SPRING, COMPRESSION | | | 12 |
| - | 1 | 1 | 1-356885-4 STOP, SHEAR | | | 11 |
| - | 1 | 1 | 2119805-1 SHEAR HOLDER, FRONT | | | 10 |
| - | 1 | 1 | 318707-1 FLOATING SHEAR, FRONT | | | 9 |
| - | 1 | 1 | 4-1633927-8 ANVIL, COMBINATION | | | 8 |
| - | 1 | 1 | 1-240641-1 SPACER | | | 7 |
| - | - | - | - | | | 6 |
| - | 1 | 1 | 2119781-1 DEPRESSOR, SHEAR | | | 5 |
| - | 1 | 1 | 5-238011-5 BLOCK, CRIMPER SPACER | | | 4 |
| - | 1 | 1 | 1803018-3 CRIMPER, INSULATION O | | | 3 |
| - | 1 | 1 | 1-455888-1 SPACER, CRIMPER | | | 2 |
| - | 1 | 1 | 1490019-2 CRIMPER, WIRE PREMIUM | | | 1 |

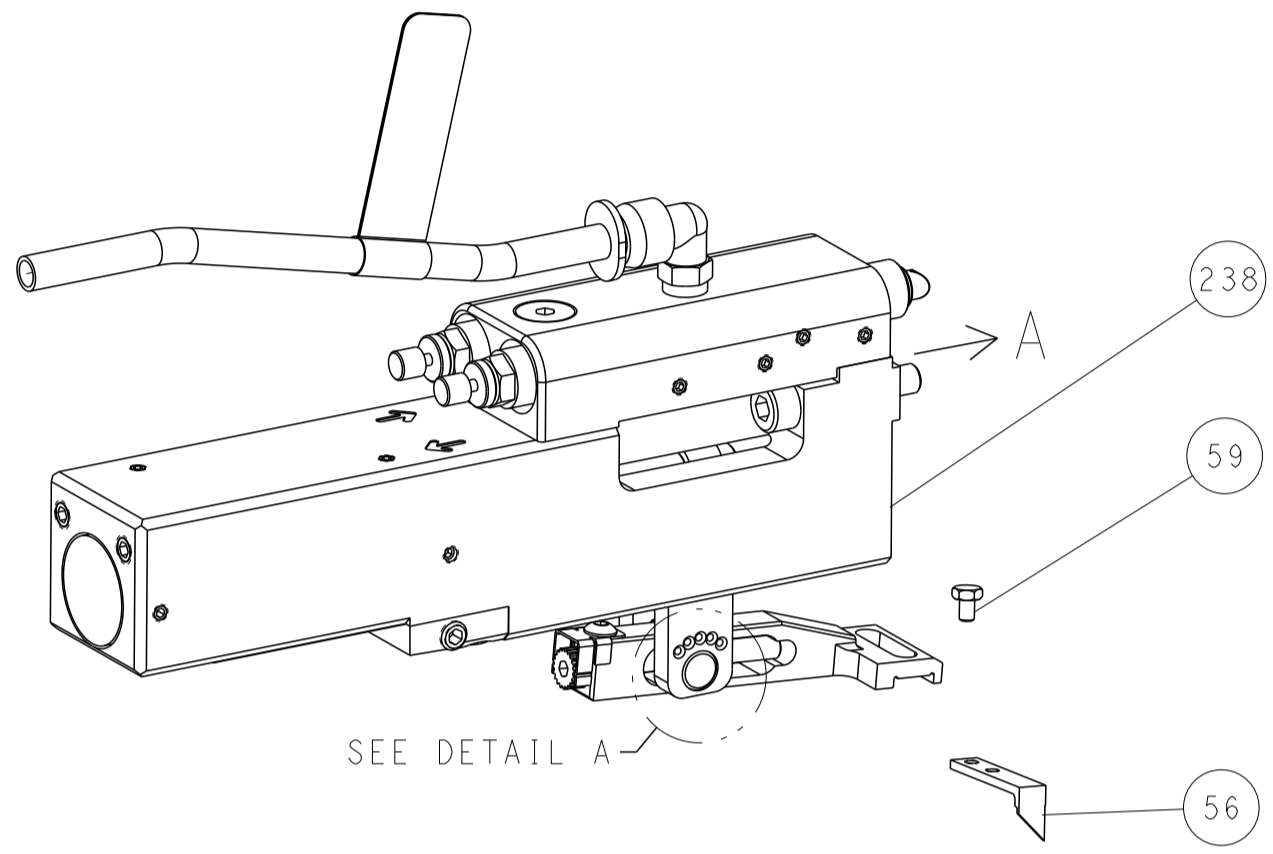
| DIMENSIONS: | | TOLERANCES UNLESS OTHERWISE SPECIFIED: | | MATERIAL: | | FINISH: | | WEIGHT: | | SCALE: | | SHEET: | | REV: | |
|-------------|---------|--|---------|-----------|---------|---------|--------|---------|--|--------|-------|---------|---|------|----|
| mm | 0 PLC ± | 1 PLC ± | 2 PLC ± | 3 PLC ± | 4 PLC ± | ANGLES | FINISH | | | A1 | 00779 | 2151965 | 3 | 4 | F2 |

| LOC | DIST | REVISIONS | | | | | |
|-----|------|-----------|-----|-------------|------|-----|------|
| A | 66 | P | LTN | DESCRIPTION | DATE | DWN | APVD |
| | | - | | SEE SHEET 1 | | | |

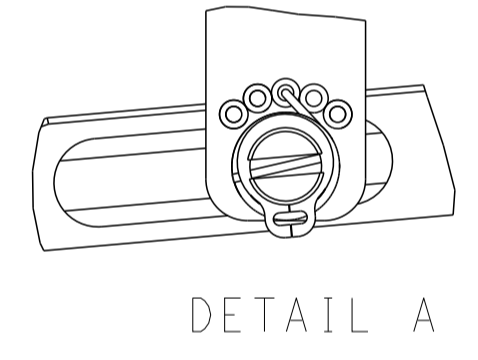
FEED TYPE MECHANICAL



PNEUMATIC

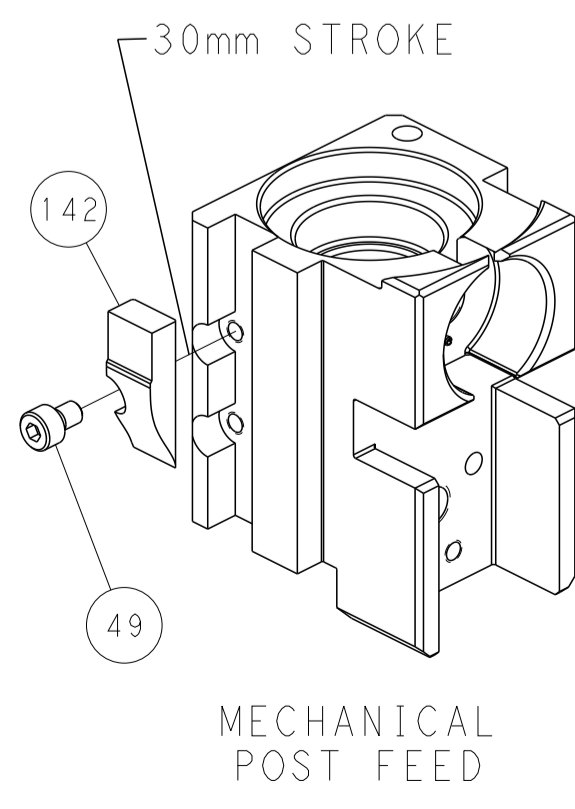


FEED SPRING SETTING POSITION (SHOWN FROM REAR SIDE)

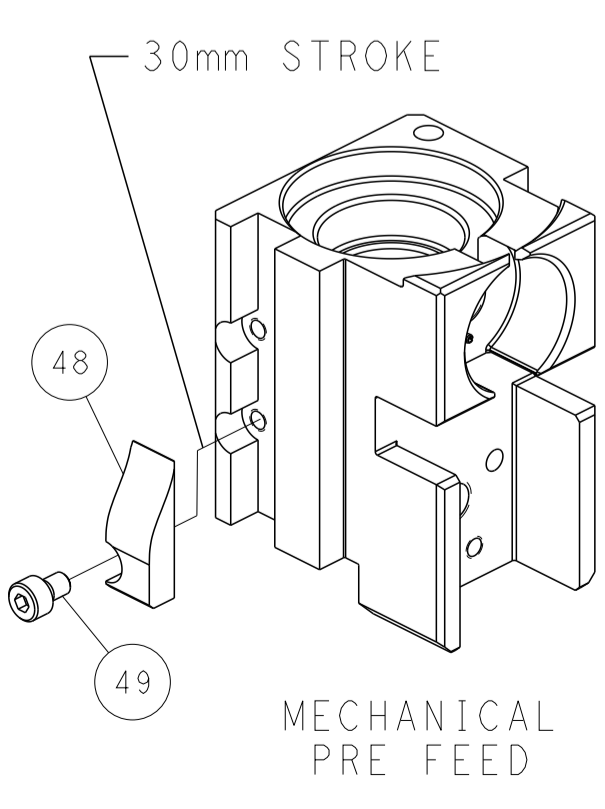


DETAIL A

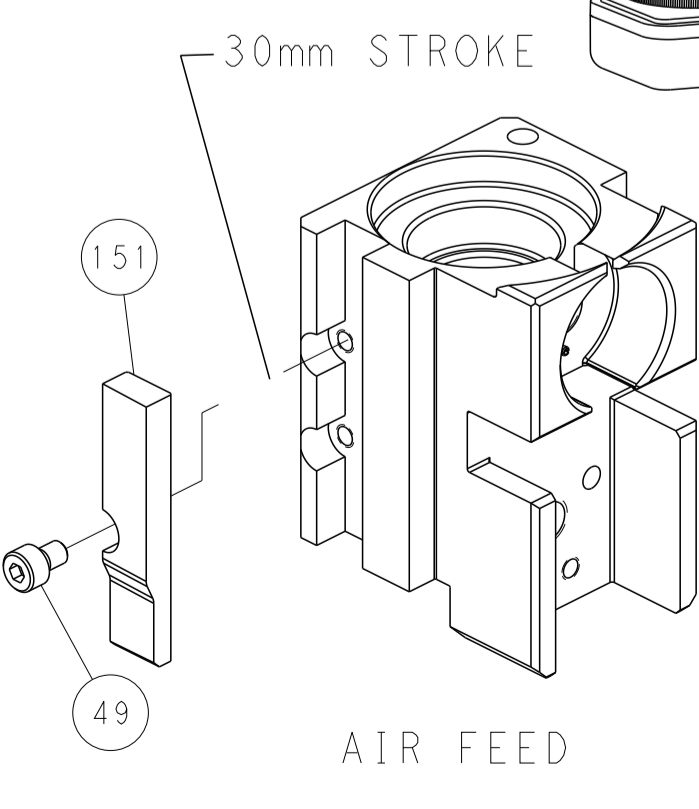
CAM POSITIONS



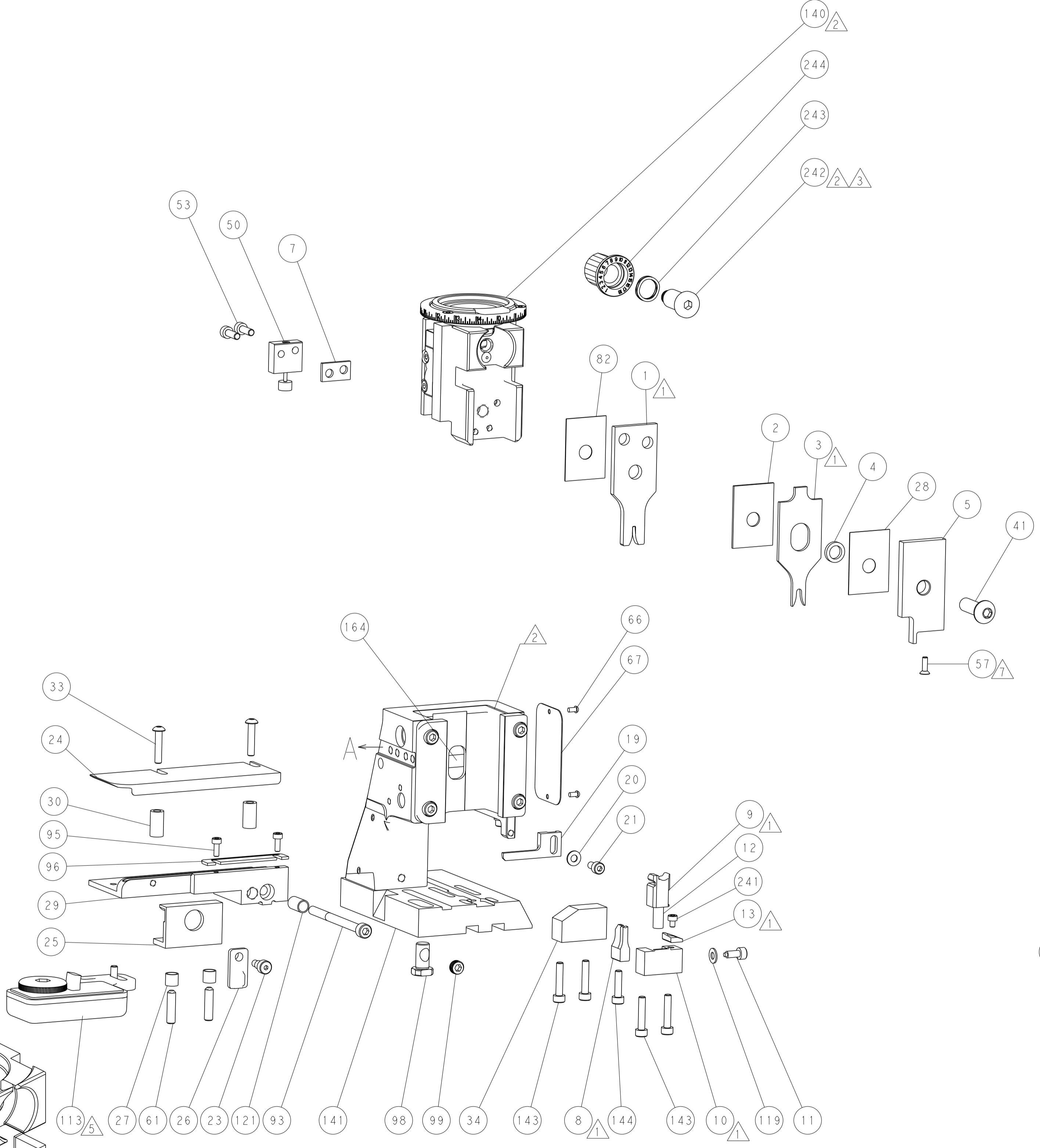
MECHANICAL POST FEED



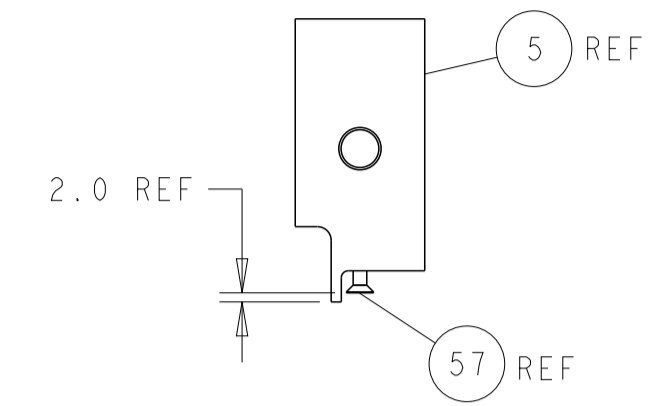
MECHANICAL PRE FEED



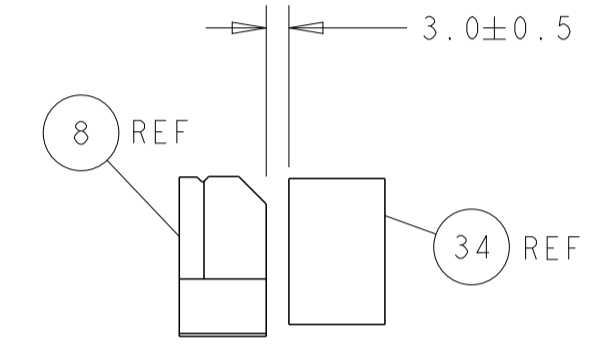
AIR FEED



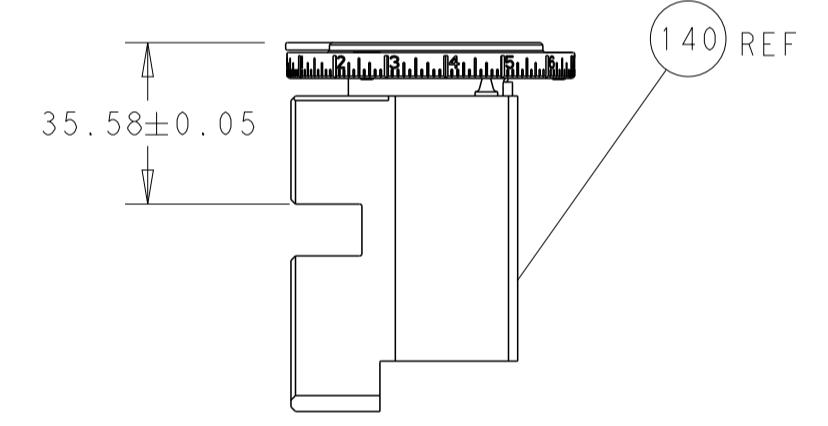
PACIFIC VERSION
 Shown on sheets 3 of 4 & 4 of 4
 (Atlantic version shown on sheets 1 of 4 & 2 of 4)



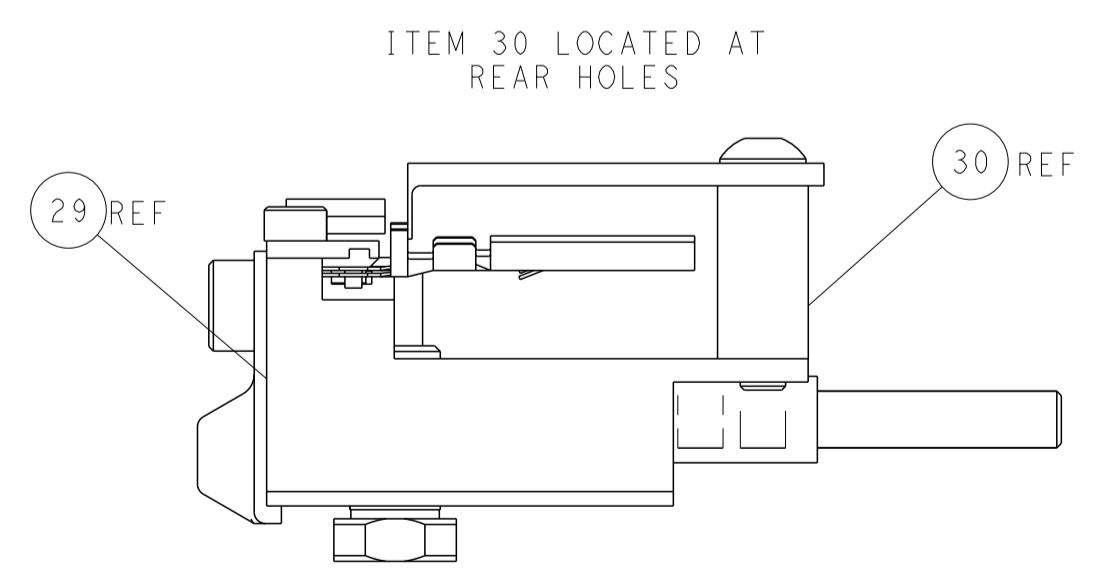
SHEAR DEPRESSOR DETAIL



TERMINAL SUPPORT LOCATION



RAM SET-UP



FEED TRACK POSITION GUIDE BY INSULATION BARREL

| | | | | | | | | | |
|-----------------------|--|---|--|---|--|--|--|---|--|
| DIMENSIONS: mm | | TOLERANCES UNLESS OTHERWISE SPECIFIED: 0 PLC ± 1 PLC ± 2 PLC ± 3 PLC ± 4 PLC ± ANGLES ± FINISH | | DWN R.O. WILSON 22MAY2013 CHK K.J. STAKEM 22MAY2013 APVD T.L. ELBIN 22MAY2013 PRODUCT SPEC APPLICATION SPEC WEIGHT Customer Accessible Production Drawing | | NAME Ocean Side Feed Applier SIZE CAGE CODE DRAWING NO A1 00779 C=2151965 SCALE 1:2 SHEET 4 OF 4 REV F2 | | RESTRICTED TO TE Connectivity Harrisburg, PA 17105-3608 | |
|-----------------------|--|---|--|---|--|--|--|---|--|