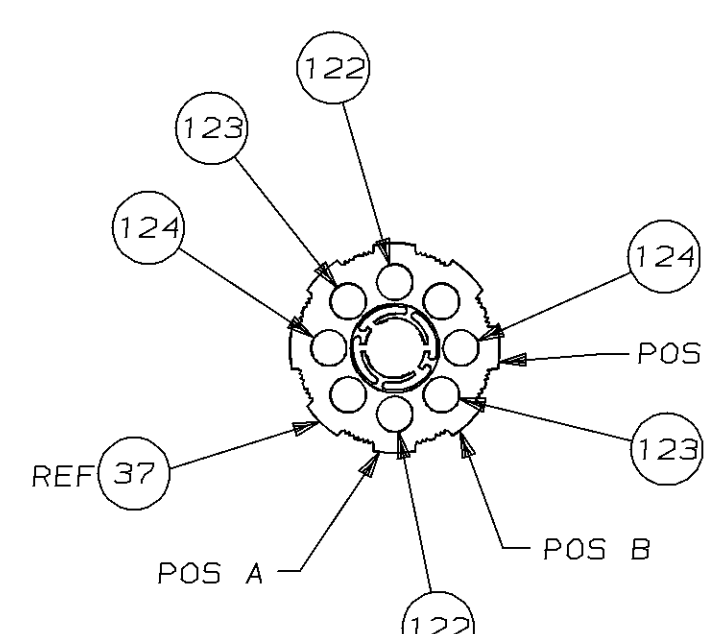
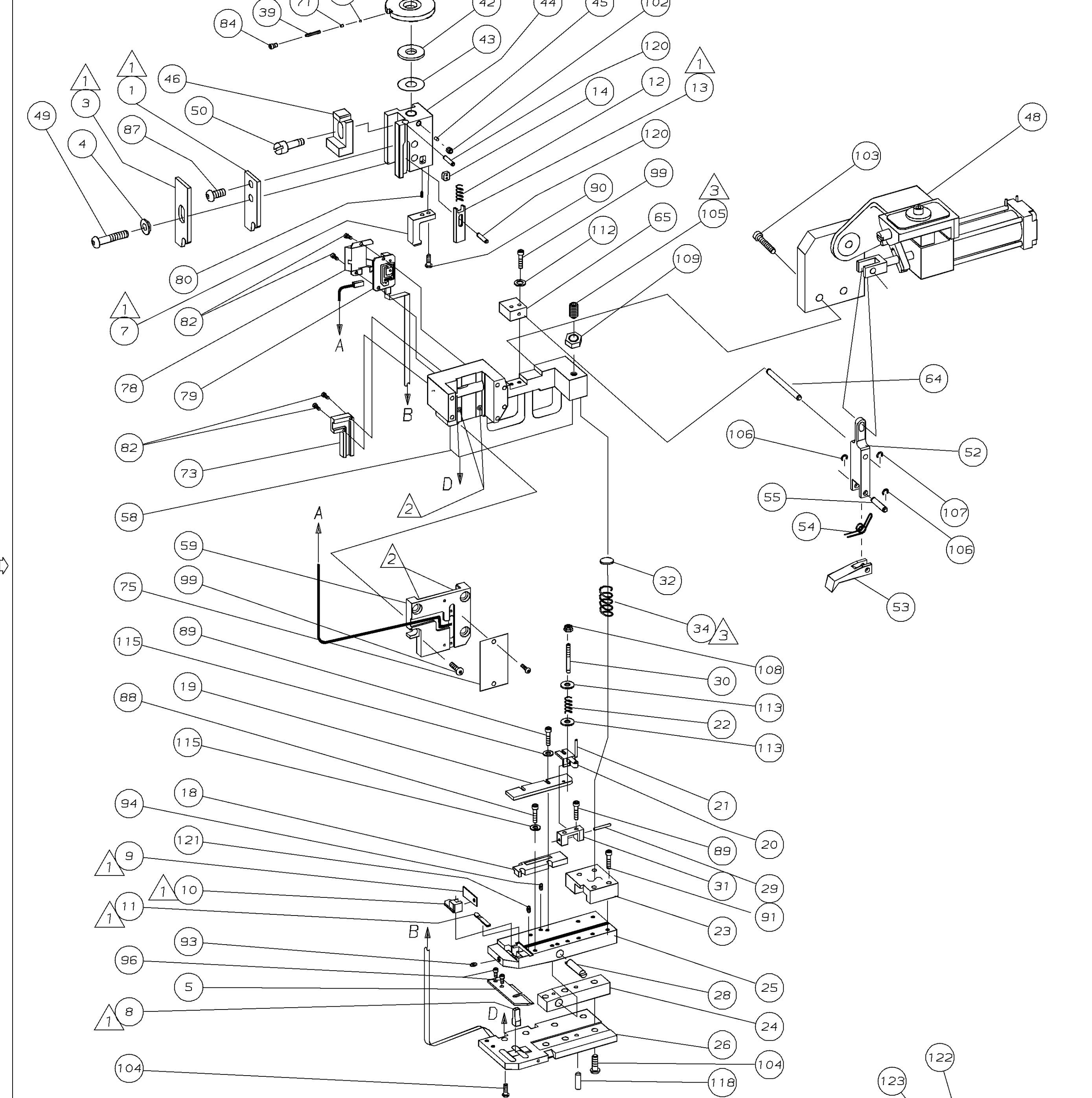


PART NUMBER	REV	FIRST USED
567758-1	A	354500-1

TERMINAL NAME:	
.187	.205
42486	42199
42618	42809
62591	63476
63417	
63748	
63557	
63696	
FOREIGN	
150680	
150699	
150634	
TERM APPL SPEC 114-2078	

CRIMPING DATA			
PAD LTR	CRIMP HEIGHT	WIRE SIZE	
A	.040±.002	16	
B	.037±.002	18	
C	.035±.002	20	
D	NOT USED		
CRIMP	SIZE	TYPE	RANGE
WIRE	.140	TAB LOCK	20-16
INSUL	.140	0	.110 - .170
FEED	APPL INST	SET UP GAGE	LAYOUT
.650	A1 8037	-	-
WIRE STRIP LENGTH -			
-1	LEADMAKER	AIRFEED	

REF APPLICATOR 687392-1				
				70
				69
				68
				67
				66
				65
				64
				63
				62
				61
				60
				59
				58
				57
				56
				55
				54
				53
				52
				51
				50
				49
				48
				47
				46
				45
				44
				43
				42
				41
				40
				39
				38
				37
				36
				35
				34
				33
				32
				31
				30
				29
				28
				27
				26
				25
				24
				23
				22
				21
				20
				19
				18
				17
				16
				15
				14
				13
				12
				11
				10
				9
				8
				7
				6
				5
				4
				3
				2
				1



					125
2	-	C	6-354779-0	PIN, WIRE DISC (.3290)C	124
2	-	C	5-354779-8	PIN, WIRE DISC (.3280)B	123
2	-	C	5-354779-0	PIN, WIRE DISC (.3240)A	122
1	-	A	3-21028-2	PIN, SLOTTED SPRING (ø.094X.25)	121
2	-	A	4-21028-9	PIN, SLOTTED SPRING (ø.125X.38)	120
1	-	A	986950-1	WASHER, FLAT PRECISION	119
1	-	A	21029-5	PIN, SLOTTED SPRING (ø.188X.75)	118
					117
					116
4	-	A	21024-4	WASHER, LOCK (#8)	115
					114
4	-	A	21899-2	WASHER, FLAT (#10)	113
2	-	A	21024-5	WASHER, LOCK (#10)	112
					111
					110
1	-	A	1-22202-7	NUT, HEX (5/16-24)	109
2	-	A	21022-3	NUT, HEX (LOCKING) (10-32)	108
1	-	A	1-21986-2	RING, RET "E" (ø.187)	107
2	-	A	21045-3	RING, RET "C" (ø.187)	106
1	-	A	8-21007-5	SCREW, SKT SET (5/16-24x.75)	105
7	-	A	2-22733-8	SCREW, BHC (1/4-20X.63)	104
2	-	A	21001-3	SCREW, SHC (1/4-20X.63)	103
1	-	A	21009-2	SCREW, SKT SET (1/4-20x.25)	102
					101
					100
6	-	A	3-21000-8	SCREW, SHC (10-32X.88)	99
					98
					97
2	-	A	7-21000-5	SCREW, SHC (10-32X.25)	96
					95
2	-	A	4-21006-0	SCREW, SKT SET (8-32X.25)	94
1	-	A	21061-9	SCREW, SKT SET (8-32X.25)	93
					92
4	-	A	2-21000-9	SCREW, SHC (8-32X.75)	91
2	-	A	1-23030-1	SCREW, SHC (NYLOK) (8-32X.62)	90
2	-	A	2-21000-8	SCREW, SHC (8-32X.62)	89
2	-	A	2-21000-7	SCREW, SHC (8-32X.50)	88
1	-	A	2-21002-1	SCREW, SBHC (8-32X.38)	87
					86
					85
1	-	A	23030-1	SCREW, SHC (NYLOK) (6-32X.25)	84
2	-	A	3-21012-1	SCREW, SKT SET (6-32X.38)	83
4	-	A	1-21002-5	SCREW, SBHC (4-40X.50)	82
					81
1	-	A	2-21006-1	SCREW, SOC SET (4-40X.25)	80
1	-	C	856822-1	PCB ASSY	79
1	-	C	856825-1	COVER, PCB	78
					77
					76
1	-	B	461264-1	PLATE, IDENTIFICATION	75
					74
1	-	B	314867-1	COVER, FLAT FLEX	73
					72
1	-	A	690603-1	SPRING, ASSIST	71

QTY	REV	U/M	DWG SIZE	PART NO	DESCRIPTION	ITEM NO
-1		U/M				

QTY	REV	U/M	DWG SIZE	PART NO	DESCRIPTION	ITEM NO
-1		U/M				

- 1 RECOMMENDED SPARE PARTS.
- 2 GREASE LIGHTLY.
- 3 AFTER ASSY OF APPLICATOR, PROPER SPRING PRESSURE (ITEM 34) CAN BE ACHIEVED BY TIGHTENING SET SCREW (ITEM 105) UNTIL CONTACT IS MADE WITH SPACER (ITEM 32), THEN TIGHTENING AN ADDITIONAL 5 1/2 TO 6 REVOLUTIONS.
- 4. DO NOT EXCEED 80 CRIMPS PER MINUTE WITH THIS APPLICATOR

LOC A
DIST 66

DIMENSIONS IN INCHES. DO NOT SCALE PRINT. TOLERANCES UNLESS OTHERWISE SPECIFIED.		MACHINING REF	
DR	7-15-94	APP	7-18-94
P. MATHIAS		J. SLUSSER	
CHK	7-18-94	REL	10/20/94
C. ERISMAN		B. MORGAN	
NAME		MACHINE REF	
END FEED CQM HINGE BAR APPL		MINI APPL	
SCALE	DWG NO	567758	SHEET REV
			1 OF 1 A2

THIS DRAWING IS A CONTROLLED DOCUMENT FOR AMP INCORPORATED. IT IS SUBJECT TO CHANGE AND THE CONTROLLING ENGINEERING ORGANIZATION SHOULD BE CONTACTED FOR THE LATEST REVISION.

THIS INFORMATION IS CONFIDENTIAL AND IS DISCLOSED TO YOU ON CONDITION THAT NO FURTHER DISCLOSURE IS MADE BY YOU TO OTHER THAN AMP PERSONNEL WITHOUT WRITTEN AUTHORIZATION FROM AMP INCORPORATED, HARRISBURG, PA.