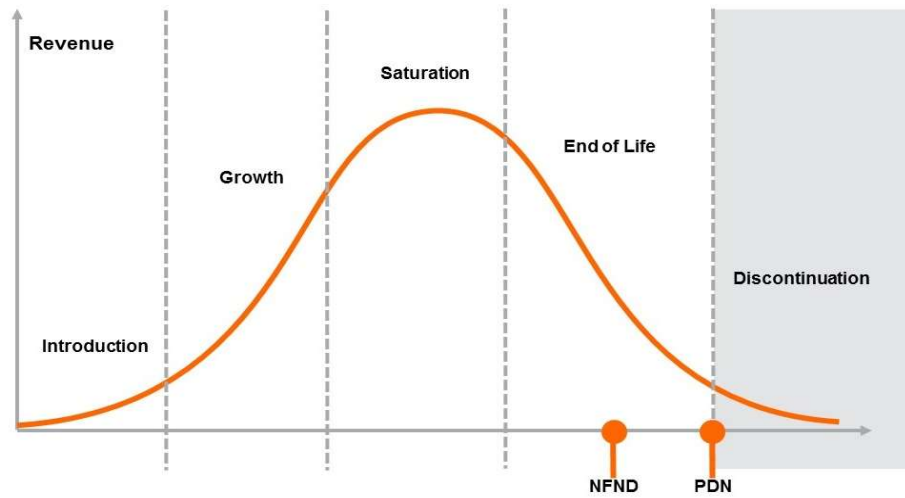


Product Or Individual Q-Code Discontinuation (acc. JEDEC J-STD-048)
OS-PDN-2022-013

15 June 2022

Last order: 30 June 2023
Last delivery: 30 June 2024



Please direct your feedback to your local Sales office.

DISCONTINUED				NEW (REPLACEMENT)		
Device	Ordering Code	Brand	Reason for discontinuation	Device	Datasheet Ordering Code	Brand
LA E63B - Whole Device						
LA E63B-DAEA-24-1-50-R33-Z-XX	Q65111A0503	Power TOPLED	No sufficient future volume forecast	LA T67F.01-AABB-24-3A4B-20-S	Q65113A4807 (in development)	TOPLED
LA E63B-DAEA-24-1-50-R33-Z-H	Q65110A5740	Power TOPLED	No sufficient future volume forecast	LA T67F.01-AABB-24-3A4B-20-S	Q65113A4807 (in development)	TOPLED
LA E63B-DAEA-24-1-50-R33-Z	Q65110A4713	Power TOPLED	No sufficient future volume forecast	LA T67F.01-AABB-24-3A4B-20-S	Q65113A4807 (in development)	TOPLED
LA E63B-DADB-34-1-50-R33-Z	Q65110A3797	Power TOPLED	No sufficient future volume forecast	LA T67F.01-AABB-24-3A4B-20-S	Q65113A4807 (in development)	TOPLED
LA E63B-CBEA-24-1-50-R33-Z	Q65110A2337	Power TOPLED	No sufficient future volume forecast	LA T67F.01-AABB-24-3A4B-20-S	Q65113A4807 (in development)	TOPLED
LA E63B-CBEA-24-1-50-R33-Z-SV	Q62703Q6420	Power TOPLED	No sufficient future volume forecast	LA T67F.01-AABB-24-3A4B-20-S	Q65113A4807 (in development)	TOPLED
LA E65B - Whole Device						
LA E65B-BACA-24-1-50-R33-Z-HE	Q65112A0646	Power TOPLED	No sufficient future volume forecast	LA T67F.01-AABB-24-3A4B-20-S	Q65113A4807 (in development)	TOPLED
LA E65B-BBCA-24-1-50-R33-Z-VAR	Q65111A6264	Power TOPLED	No sufficient future volume forecast	LA T67F.01-AABB-24-3A4B-20-S	Q65113A4807 (in development)	TOPLED
LA E65B-ABCA-24-1-50-R33-Z-SV	Q65111A1135	Power TOPLED	No sufficient future volume forecast	LA T67F.01-AABB-24-3A4B-20-S	Q65113A4807 (in development)	TOPLED
LA E65B-BACA-24-1-50-R33-Z-F	Q65110A5229	Power TOPLED	No sufficient future volume forecast	LA T67F.01-AABB-24-3A4B-20-S	Q65113A4807 (in development)	TOPLED
LA E65B-ABBB-24-1-50-R33-Z-HE	Q65110A5271	Power TOPLED	No sufficient future volume forecast	LA T67F.01-AABB-24-3A4B-20-S	Q65113A4807 (in development)	TOPLED
LA E65B-BBCA-24-1-50-R33-Z	Q65110A4470	Power TOPLED	No sufficient future volume forecast	LA T67F.01-AABB-24-3A4B-20-S	Q65113A4807 (in development)	TOPLED
LA E65B-BABB-23-1-50-R33-Z	Q65110A3158	Power TOPLED	No sufficient future volume forecast	LA T67F.01-AABB-24-3A4B-20-S	Q65113A4807 (in development)	TOPLED
LA E65B-AABB-24-1-50-R33-Z	Q65110A2349	Power TOPLED	No sufficient future volume forecast	LA T67F.01-AABB-24-3A4B-20-S	Q65113A4807 (in development)	TOPLED
LA E65B-BACA-24-1-50-R33-Z	Q65110A2350	Power TOPLED	No sufficient future volume forecast	LA T67F.01-AABB-24-3A4B-20-S	Q65113A4807 (in development)	TOPLED
LA E65B-AACA-24-1-50-R33-Z	Q65110A2351	Power TOPLED	No sufficient future volume forecast	LA T67F.01-AABB-24-3A4B-20-S	Q65113A4807 (in development)	TOPLED
LA E65B-ABCA-24-1-50-R33-Z	Q65110A1192	Power TOPLED	No sufficient future volume forecast	LA T67F.01-AABB-24-3A4B-20-S	Q65113A4807 (in development)	TOPLED
LA E67B - Whole Device						
LA E67B-V2AB-24-1-50-R18-Z-OL	Q65112A6373	Power TOPLED	No sufficient future volume forecast	KR DELPS1.22 / LA T67F.01	Q65112A5163 / in development	TOPLED
LA E67B-U2V2-24-1-50-R18-Z-HE	Q65112A1621	Power TOPLED	No sufficient future volume forecast	KR DELPS1.22 / LA T67F.01	Q65112A5163 / in development	TOPLED
LA E67B-V1V2-24-1-50-R33-Z-SV	Q65111A1975	Power TOPLED	No sufficient future volume forecast	KR DELPS1.22 / LA T67F.01	Q65112A5163 / in development	TOPLED
LA E67B-V1AA-24-3A3B-50-R18-Z-XX	Q65111A2014	Power TOPLED	No sufficient future volume forecast	KR DELPS1.22 / LA T67F.01	Q65112A5163 / in development	TOPLED
LA E67B-U1V1-24-1-50-R18-ZH	Q65111A1415	Power TOPLED	No sufficient future volume forecast	KR DELPS1.22 / LA T67F.01	Q65112A5163 / in development	TOPLED
LA E67B-U2V2-24-1-50-R18-Z-AL	Q65111A0140	Power TOPLED	No sufficient future volume forecast	KR DELPS1.22 / LA T67F.01	Q65112A5163 / in development	TOPLED
LA E67B-V1-24-1-50-R18-Z-XX	Q65110A9450	Power TOPLED	No sufficient future volume forecast	KR DELPS1.22 / LA T67F.01	Q65112A5163 / in development	TOPLED
LA E67B-V1V2-24-1-50-R18-Z-SV	Q65110A9495	Power TOPLED	No sufficient future volume forecast	KR DELPS1.22 / LA T67F.01	Q65112A5163 / in development	TOPLED
LA E67B-V1AA-24-1-50-R33-Z-AL	Q65110A8292	Power TOPLED	No sufficient future volume forecast	KR DELPS1.22 / LA T67F.01	Q65112A5163 / in development	TOPLED

DISCONTINUED				NEW (REPLACEMENT)		
Device	Ordering Code	Brand	Reason for discontinuation	Device	Datasheet Ordering Code	Brand
LA E67B-V1AA-24-1-50-R18-Z-AL	Q65110A8157	Power TOPLED	No sufficient future volume forecast	KR DELPS1.22 / LA T67F.01	Q65112A5163 / in development	TOPLED
LA E67B-U2-3-1-50-R18-Z-XX	Q65110A7562	Power TOPLED	No sufficient future volume forecast	KR DELPS1.22 / LA T67F.01	Q65112A5163 / in development	TOPLED
LA E67B-U2AA-23-1-50-R18-Z-F	Q65110A6521	Power TOPLED	No sufficient future volume forecast	KR DELPS1.22 / LA T67F.01	Q65112A5163 / in development	TOPLED
LA E67B-U2V2-23-1-50-R18-Z-F	Q65110A6562	Power TOPLED	No sufficient future volume forecast	KR DELPS1.22 / LA T67F.01	Q65112A5163 / in development	TOPLED
LA E67B-V1V2-34-1-50-R18-Z	Q65110A6615	Power TOPLED	No sufficient future volume forecast	KR DELPS1.22 / LA T67F.01	Q65112A5163 / in development	TOPLED
LA E67B-V2AA-24-1-50-R18-Z-XX	Q65110A6867	Power TOPLED	No sufficient future volume forecast	KR DELPS1.22 / LA T67F.01	Q65112A5163 / in development	TOPLED
LA E67B-V1AA-24-1-50-R18-ZH	Q65110A6875	Power TOPLED	No sufficient future volume forecast	KR DELPS1.22 / LA T67F.01	Q65112A5163 / in development	TOPLED
LA E67B-V1AA-24-1-50-R18-Z-HE	Q65110A5039	Power TOPLED	No sufficient future volume forecast	KR DELPS1.22 / LA T67F.01	Q65112A5163 / in development	TOPLED
LA E67B-V1AA-24-1-50-R33-Z-HE	Q65110A5063	Power TOPLED	No sufficient future volume forecast	KR DELPS1.22 / LA T67F.01	Q65112A5163 / in development	TOPLED
LA E67B-U2V2-24-1-50-R33-Z-HE	Q65110A5079	Power TOPLED	No sufficient future volume forecast	KR DELPS1.22 / LA T67F.01	Q65112A5163 / in development	TOPLED
LA E67B-V2AB-24-1-50-R18-Z-XX	Q65110A5331	Power TOPLED	No sufficient future volume forecast	KR DELPS1.22 / LA T67F.01	Q65112A5163 / in development	TOPLED
LA E67B-U2V2-24-1-50-R18-Z	Q65110A5477	Power TOPLED	No sufficient future volume forecast	KR DELPS1.22 / LA T67F.01	Q65112A5163 / in development	TOPLED
LA E67B-U2AA-24-1-50-R18-Z-HE	Q65110A5036	Power TOPLED	No sufficient future volume forecast	KR DELPS1.22 / LA T67F.01	Q65112A5163 / in development	TOPLED
LA E67B-U1V1-24-1-50-R33-Z	Q65110A3893	Power TOPLED	No sufficient future volume forecast	KR DELPS1.22 / LA T67F.01	Q65112A5163 / in development	TOPLED
LA E67B-V1AA-23-1-50-R18-Z	Q65110A3924	Power TOPLED	No sufficient future volume forecast	KR DELPS1.22 / LA T67F.01	Q65112A5163 / in development	TOPLED
LA E67B-V1AA-34-1-50-R18-Z	Q65110A4030	Power TOPLED	No sufficient future volume forecast	KR DELPS1.22 / LA T67F.01	Q65112A5163 / in development	TOPLED
LA E67B-V1AA-24-1-50-R18-Z	Q65110A3079	Power TOPLED	No sufficient future volume forecast	KR DELPS1.22 / LA T67F.01	Q65112A5163 / in development	TOPLED
LA E67B-V1AA-24-1-50-R33-Z	Q65110A3475	Power TOPLED	No sufficient future volume forecast	KR DELPS1.22 / LA T67F.01	Q65112A5163 / in development	TOPLED
LA E67B-U2V2-34-1-50-R18-Z	Q65110A3676	Power TOPLED	No sufficient future volume forecast	KR DELPS1.22 / LA T67F.01	Q65112A5163 / in development	TOPLED
LA E67B-V1V2-24-1-50-R18-Z	Q65110A3677	Power TOPLED	No sufficient future volume forecast	KR DELPS1.22 / LA T67F.01	Q65112A5163 / in development	TOPLED
LA E67B-T2V1-24-1-50-R18-Z	Q65110A2315	Power TOPLED	No sufficient future volume forecast	KR DELPS1.22 / LA T67F.01	Q65112A5163 / in development	TOPLED
LA E67B-U2AA-24-1-50-R18-Z	Q65110A2316	Power TOPLED	No sufficient future volume forecast	KR DELPS1.22 / LA T67F.01	Q65112A5163 / in development	TOPLED
LA E67B-T2AA-24-1-50-R18-Z	Q65110A2317	Power TOPLED	No sufficient future volume forecast	KR DELPS1.22 / LA T67F.01	Q65112A5163 / in development	TOPLED
LA E67B-U2AA-24-1-50-R18-Z-SV	Q62703Q6173	Power TOPLED	No sufficient future volume forecast	KR DELPS1.22 / LA T67F.01	Q65112A5163 / in development	TOPLED
LG A67K - Whole Device						
LG A67K-J1K1-24-0-2-R33-XX	Q65113A2787	SIDELED	No sufficient future volume forecast	No replacement		
LG A67K-J1K1-24-0-2-R33-Z	Q65113A3275	SIDELED	No sufficient future volume forecast	No replacement		
LG A67K-J1J2-34-0-2-R33-Z-PRE	Q65113A1404	SIDELED	No sufficient future volume forecast	No replacement		
LG A67K-J1K1-23-0-2-R33-Z	Q65111A1794	SIDELED	No sufficient future volume forecast	No replacement		

DISCONTINUED				NEW (REPLACEMENT)		
Device	Ordering Code	Brand	Reason for discontinuation	Device	Datasheet Ordering Code	Brand
LG A67K-J1K1-24-0-2-R33-Z-SV	Q65110A6991	SIDELED	No sufficient future volume forecast	No replacement		
LG A67K-G2J1-24-0-2-R33-Z	Q65110A2289	SIDELED	No sufficient future volume forecast	No replacement		
LG A67K-H2K1-24-0-2-R33-Z	Q65110A2290	SIDELED	No sufficient future volume forecast	No replacement		
LG A67K-G2K1-24-0-2-R33-Z	Q65110A2291	SIDELED	No sufficient future volume forecast	No replacement		
LO A67K - Whole Device						
LO A67K-L1M2-34-0-2-R33-Z-PRE	Q65113A1603	SIDELED	No sufficient future volume forecast	No replacement		
LO A67K-L2M2-34-0-2-L-Z-XX	Q65113A1651	SIDELED	No sufficient future volume forecast	No replacement		
LO A67K-L1M1-24-0-2-R33-ZF	Q65113A1110	SIDELED	No sufficient future volume forecast	No replacement		
LO A67K-K1L2-34-0-2-R33-Z-OL	Q65112A6365	SIDELED	No sufficient future volume forecast	No replacement		
LO A67K-L1L2-34-0-2-R33-Z	Q65110A8611	SIDELED	No sufficient future volume forecast	No replacement		
LO A67K-K1L2-34-0-2-R33-Z	Q65110A7989	SIDELED	No sufficient future volume forecast	No replacement		
LO A67K-K1L2-24-0-2-R33-Z	Q65110A4968	SIDELED	No sufficient future volume forecast	No replacement		
LO A67K-K1M2-24-0-2-R33-Z	Q65110A4969	SIDELED	No sufficient future volume forecast	No replacement		
LO A67K-L1M2-24-0-2-R33-Z	Q65110A4970	SIDELED	No sufficient future volume forecast	No replacement		
LO E63B - Whole Device						
LO E63B-DAEB-34-1-50-R33-Z-XX	Q65111A2779	Power TOPLED	No sufficient future volume forecast	LO T67F.01-AABA-24-3A4B-20-S	Q65113A4806 (in development)	TOPLED
LO E63B-DAEB-34-1-50-R33-Z-B	Q65110A7250	Power TOPLED	No sufficient future volume forecast	LO T67F.01-AABA-24-3A4B-20-S	Q65113A4806 (in development)	TOPLED
LO E63B-DBEB-24-1-50-R33-Z	Q65110A6928	Power TOPLED	No sufficient future volume forecast	LO T67F.01-AABA-24-3A4B-20-S	Q65113A4806 (in development)	TOPLED
LO E63B-DAEB-24-1-50-R33-Z	Q65110A2338	Power TOPLED	No sufficient future volume forecast	LO T67F.01-AABA-24-3A4B-20-S	Q65113A4806 (in development)	TOPLED
LO E67B - Whole Device						
LO E67B-V2AA-34-1-50-R18-Z	Q65112A1583	Power TOPLED	No sufficient future volume forecast	KO DELPS1.22 / LO T67F.01	Q65112A3997 / in development	TOPLED
LO E67B-V2AA-24-1-50-R18-Z-XX	Q65112A3390	Power TOPLED	No sufficient future volume forecast	KO DELPS1.22 / LO T67F.01	Q65112A3997 / in development	TOPLED
LO E67B-V2AA-23-1-50-R18-Z-HE	Q65111A5257	Power TOPLED	No sufficient future volume forecast	KO DELPS1.22 / LO T67F.01	Q65112A3997 / in development	TOPLED
LO E67B-V1AA-24-1-50-R33-Z-SV	Q65111A1976	Power TOPLED	No sufficient future volume forecast	KO DELPS1.22 / LO T67F.01	Q65112A3997 / in development	TOPLED
LO E67B-U2V2-24-1-50-R18-Z	Q65111A1019	Power TOPLED	No sufficient future volume forecast	KO DELPS1.22 / LO T67F.01	Q65112A3997 / in development	TOPLED
LO E67B-V1AA-3-1-50-R18-Z	Q65110A9256	Power TOPLED	No sufficient future volume forecast	KO DELPS1.22 / LO T67F.01	Q65112A3997 / in development	TOPLED
LO E67B-V2AA-23-1-50-R33-Z-VIS	Q65110A9257	Power TOPLED	No sufficient future volume forecast	KO DELPS1.22 / LO T67F.01	Q65112A3997 / in development	TOPLED
LO E67B-V2AA-23-1-50-R18-Z-VIS	Q65110A8668	Power TOPLED	No sufficient future volume forecast	KO DELPS1.22 / LO T67F.01	Q65112A3997 / in development	TOPLED
LO E67B-V1V2-3-1-50-R18-ZH	Q65110A7297	Power TOPLED	No sufficient future volume forecast	KO DELPS1.22 / LO T67F.01	Q65112A3997 / in development	TOPLED

DISCONTINUED				NEW (REPLACEMENT)		
Device	Ordering Code	Brand	Reason for discontinuation	Device	Datasheet Ordering Code	Brand
LO E67B-V1AA-24-1-50-R18-Z	Q65110A6589	Power TOPLED	No sufficient future volume forecast	KO DELPS1.22 / LO T67F.01	Q65112A3997 / in development	TOPLED
LO E67B-U2AA-34-1-50-R33-Z-DL	Q65110A6680	Power TOPLED	No sufficient future volume forecast	KO DELPS1.22 / LO T67F.01	Q65112A3997 / in development	TOPLED
LO E67B-V1AA-23-1-50-R18-Z	Q65110A6823	Power TOPLED	No sufficient future volume forecast	KO DELPS1.22 / LO T67F.01	Q65112A3997 / in development	TOPLED
LO E67B-V1AA-34-1-50-R18-Z-HE	Q65110A5276	Power TOPLED	No sufficient future volume forecast	KO DELPS1.22 / LO T67F.01	Q65112A3997 / in development	TOPLED
LO E67B-U2AA-34-1-50-R18-Z	Q65110A4819	Power TOPLED	No sufficient future volume forecast	KO DELPS1.22 / LO T67F.01	Q65112A3997 / in development	TOPLED
LO E67B-V2-34-1-50-R33-Z-BP	Q65110A3745	Power TOPLED	No sufficient future volume forecast	KO DELPS1.22 / LO T67F.01	Q65112A3997 / in development	TOPLED
LO E67B-U2AA-24-1-50-R18-Z	Q65110A2318	Power TOPLED	No sufficient future volume forecast	KO DELPS1.22 / LO T67F.01	Q65112A3997 / in development	TOPLED
LO E67B-V2AA-34-1-50-R18-Z-JC	Q65110A1618	Power TOPLED	No sufficient future volume forecast	KO DELPS1.22 / LO T67F.01	Q65112A3997 / in development	TOPLED
LO E67B-V1AA-24-1-50-R18-Z-SV	Q62703Q6018	Power TOPLED	No sufficient future volume forecast	KO DELPS1.22 / LO T67F.01	Q65112A3997 / in development	TOPLED
LP A675 - Whole Device						
LP A675-N2P2-3-0-30-R33-Z-VL	Q65112A1471	SIDELED	No sufficient future volume forecast	No replacement		
LP A675-N2P2-3-0-30-R33-Z-TW	Q65111A8467	SIDELED	No sufficient future volume forecast	No replacement		
LP A675-N1N2-45-0-30-R33-Z	Q65111A1522	SIDELED	No sufficient future volume forecast	No replacement		
LP A675-P1P2-34-0-30-R33-Z	Q65110A9728	SIDELED	No sufficient future volume forecast	No replacement		
LP A675-N1N2-34-0-30-R33-Z	Q65110A9786	SIDELED	No sufficient future volume forecast	No replacement		
LP A675-N2-4-0-30-R33-Z-BP	Q65110A8380	SIDELED	No sufficient future volume forecast	No replacement		
LP A675-N2P2-34-0-30-R33-Z-XX	Q65110A8824	SIDELED	No sufficient future volume forecast	No replacement		
LP A675-N2P2-25-0-30-R33-Z-XX	Q65110A6568	SIDELED	No sufficient future volume forecast	No replacement		
LP A675-N1P2-34-0-30-R33-Z-HE	Q65110A5081	SIDELED	No sufficient future volume forecast	No replacement		
LP A675-N1P2-34-0-30-R33-Z	Q65110A5788	SIDELED	No sufficient future volume forecast	No replacement		
LP A675-N1-34-0-30-R33-Z-BP	Q65110A6060	SIDELED	No sufficient future volume forecast	No replacement		
LP A675-N2-34-0-30-R33-Z-BP	Q65110A6061	SIDELED	No sufficient future volume forecast	No replacement		
LP A675-P1-34-0-30-R33-Z-BP	Q65110A6062	SIDELED	No sufficient future volume forecast	No replacement		
LP A675-N1N2-34-0-30-R33-Z-SV	Q65110A4823	SIDELED	No sufficient future volume forecast	No replacement		
LP A675-N1P2-3-0-30-R33-Z-XX	Q65110A4015	SIDELED	No sufficient future volume forecast	No replacement		
LP A675-N1P2-25-0-30-R33-Z	Q65110A2310	SIDELED	No sufficient future volume forecast	No replacement		
LP M675 - Whole Device						
LP M675-M2P1-23-0-30-R18-Z-SV	Q65113A0971	Mini TOPLED	No sufficient future volume forecast	KP DELMS1.22-MGNH-25-E6L6-20-S	Q65112A4856	TOPLED
LP M675-N2P1-25-0-30-R18-Z-XX	Q65112A2521	Mini TOPLED	No sufficient future volume forecast	KP DELMS1.22-MGNH-25-E6L6-20-S	Q65112A4856	TOPLED

DISCONTINUED				NEW (REPLACEMENT)		
Device	Ordering Code	Brand	Reason for discontinuation	Device	Datasheet Ordering Code	Brand
LP M675-N1P1-34-0-30-R18-Z-B	Q65112A0915	Mini TOPLED	No sufficient future volume forecast	KP DELMS1.22-MGNH-25-E6L6-20-S	Q65112A4856	TOPLED
LP M675-N1P1-34-0-30-R18-Z-PRE	Q65111A8599	Mini TOPLED	No sufficient future volume forecast	KP DELMS1.22-MGNH-25-E6L6-20-S	Q65112A4856	TOPLED
LP M675-N2P1-34-0-30-R18-Z-PRE	Q65111A8600	Mini TOPLED	No sufficient future volume forecast	KP DELMS1.22-MGNH-25-E6L6-20-S	Q65112A4856	TOPLED
LP M675-M2P1-34-0-30-R33-Z-HE	Q65111A6333	Mini TOPLED	No sufficient future volume forecast	KP DELMS1.22-MGNH-25-E6L6-20-S	Q65112A4856	TOPLED
LP M675-N1P1-25-0-30-R18-Z	Q65111A5371	Mini TOPLED	No sufficient future volume forecast	KP DELMS1.22-MGNH-25-E6L6-20-S	Q65112A4856	TOPLED
LP M675-P1-25-0-30-R18-Z-KS	Q65111A3138	Mini TOPLED	No sufficient future volume forecast	KP DELMS1.22-MGNH-25-E6L6-20-S	Q65112A4856	TOPLED
LP M675-M2P1-34-0-30-R18-Z-HE	Q65111A0709	Mini TOPLED	No sufficient future volume forecast	KP DELMS1.22-MGNH-25-E6L6-20-S	Q65112A4856	TOPLED
LP M675-M2-3-0-30-R18-Z-BP	Q65110A8382	Mini TOPLED	No sufficient future volume forecast	KP DELMS1.22-MGNH-25-E6L6-20-S	Q65112A4856	TOPLED
LP M675-N1-3-0-30-R18-Z-BP	Q65110A8383	Mini TOPLED	No sufficient future volume forecast	KP DELMS1.22-MGNH-25-E6L6-20-S	Q65112A4856	TOPLED
LP M675-N2-3-0-30-R18-Z-BP	Q65110A8384	Mini TOPLED	No sufficient future volume forecast	KP DELMS1.22-MGNH-25-E6L6-20-S	Q65112A4856	TOPLED
LP M675-N2-4-0-30-R18-Z-BP	Q65110A8387	Mini TOPLED	No sufficient future volume forecast	KP DELMS1.22-MGNH-25-E6L6-20-S	Q65112A4856	TOPLED
LP M675-N1N2-34-0-30-R18-Z	Q65110A7035	Mini TOPLED	No sufficient future volume forecast	KP DELMS1.22-MGNH-25-E6L6-20-S	Q65112A4856	TOPLED
LP M675-N2P1-34-0-30-R18-Z	Q65110A5828	Mini TOPLED	No sufficient future volume forecast	KP DELMS1.22-MGNH-25-E6L6-20-S	Q65112A4856	TOPLED
LP M675-M2P1-3-0-30-R18-Z-XX	Q65110A5974	Mini TOPLED	No sufficient future volume forecast	KP DELMS1.22-MGNH-25-E6L6-20-S	Q65112A4856	TOPLED
LP M675-M2N2-34-0-30-R18-Z	Q65110A4508	Mini TOPLED	No sufficient future volume forecast	KP DELMS1.22-MGNH-25-E6L6-20-S	Q65112A4856	TOPLED
LP M675-M2P1-24-0-30-R18-Z	Q65110A3713	Mini TOPLED	No sufficient future volume forecast	KP DELMS1.22-MGNH-25-E6L6-20-S	Q65112A4856	TOPLED
LP M675-N1P1-34-0-30-R18-Z	Q65110A3520	Mini TOPLED	No sufficient future volume forecast	KP DELMS1.22-MGNH-25-E6L6-20-S	Q65112A4856	TOPLED
LP M675-M2-34-0-30-R18-Z-BP	Q65110A1787	Mini TOPLED	No sufficient future volume forecast	KP DELMS1.22-MGNH-25-E6L6-20-S	Q65112A4856	TOPLED
LP M675-N1-34-0-30-R18-Z-BP	Q65110A1789	Mini TOPLED	No sufficient future volume forecast	KP DELMS1.22-MGNH-25-E6L6-20-S	Q65112A4856	TOPLED
LP M675-N2-34-0-30-R18-Z-BP	Q65110A1790	Mini TOPLED	No sufficient future volume forecast	KP DELMS1.22-MGNH-25-E6L6-20-S	Q65112A4856	TOPLED
LP M675-M2P1-25-0-30-R18-Z	Q65110A2399	Mini TOPLED	No sufficient future volume forecast	KP DELMS1.22-MGNH-25-E6L6-20-S	Q65112A4856	TOPLED
LP M675-N2P1-25-0-30-R18-Z-SV	Q65110A0721	Mini TOPLED	No sufficient future volume forecast	KP DELMS1.22-MGNH-25-E6L6-20-S	Q65112A4856	TOPLED
LP M675-N1P1-25-0-30-R18-Z-SV	Q65110A0945	Mini TOPLED	No sufficient future volume forecast	KP DELMS1.22-MGNH-25-E6L6-20-S	Q65112A4856	TOPLED
LP T655 - Whole Device						
LP T655-R1R2-34-0-30-R33-Z-MM	Q65111A3323	TOPLED	No sufficient future volume forecast	KP DELPS1.FP-UGVI-34-Z555-10-S	Q65112A3998	TOPLED
LP T655-R1S2-34-0-30-R33-Z-MM	Q65111A1675	TOPLED	No sufficient future volume forecast	KP DELPS1.FP-UGVI-34-Z555-10-S	Q65112A3998	TOPLED
LP T655-R1R2-34-0-30-R33-Z-VIS	Q65111A1703	TOPLED	No sufficient future volume forecast	KP DELPS1.FP-UGVI-34-Z555-10-S	Q65112A3998	TOPLED
LP T655-R1R2-25-0-30-R33-Z	Q65111A0359	TOPLED	No sufficient future volume forecast	KP DELPS1.FP-UGVI-34-Z555-10-S	Q65112A3998	TOPLED
LP T655-R1R2-34-0-30-R33-Z-JC	Q65110A9759	TOPLED	No sufficient future volume forecast	KP DELPS1.FP-UGVI-34-Z555-10-S	Q65112A3998	TOPLED

DISCONTINUED				NEW (REPLACEMENT)		
Device	Ordering Code	Brand	Reason for discontinuation	Device	Datasheet Ordering Code	Brand
LP T655-Q2R2-24-0-30-R33-Z-VIS	Q65110A9497	TOPLED	No sufficient future volume forecast	KP DELPS1.FP-UGVI-34-Z555-10-S	Q65112A3998	TOPLED
LP T655-Q2R2-34-0-30-R33-ZV-MM	Q65110A9632	TOPLED	No sufficient future volume forecast	KP DELPS1.FP-UGVI-34-Z555-10-S	Q65112A3998	TOPLED
LP T655-R1S2-34-0-30-R33-Z-SV	Q65110A8937	TOPLED	No sufficient future volume forecast	KP DELPS1.FP-UGVI-34-Z555-10-S	Q65112A3998	TOPLED
LP T655-Q2R2-34-0-30-R33-Z-TW	Q65110A7740	TOPLED	No sufficient future volume forecast	KP DELPS1.FP-UGVI-34-Z555-10-S	Q65112A3998	TOPLED
LP T655-Q2R2-34-0-30-R33-Z	Q65110A8024	TOPLED	No sufficient future volume forecast	KP DELPS1.FP-UGVI-34-Z555-10-S	Q65112A3998	TOPLED
LP T655-R1S2-45-0-30-R33-Z-SV	Q65110A8121	TOPLED	No sufficient future volume forecast	KP DELPS1.FP-UGVI-34-Z555-10-S	Q65112A3998	TOPLED
LP T655-R1R2-4-0-30-R33-Z	Q65110A7318	TOPLED	No sufficient future volume forecast	KP DELPS1.FP-UGVI-34-Z555-10-S	Q65112A3998	TOPLED
LP T655-Q2R2-34-0-30-R33-ZH	Q65110A7588	TOPLED	No sufficient future volume forecast	KP DELPS1.FP-UGVI-34-Z555-10-S	Q65112A3998	TOPLED
LP T655-Q1R2-34-0-30-R33-Z-KS	Q65110A5154	TOPLED	No sufficient future volume forecast	KP DELPS1.FP-UGVI-34-Z555-10-S	Q65112A3998	TOPLED
LP T655-Q1R1-34-0-30-R33-Z	Q65110A5780	TOPLED	No sufficient future volume forecast	KP DELPS1.FP-UGVI-34-Z555-10-S	Q65112A3998	TOPLED
LP T655-Q1R1-25-0-30-R33-Z-F	Q65110A3888	TOPLED	No sufficient future volume forecast	KP DELPS1.FP-UGVI-34-Z555-10-S	Q65112A3998	TOPLED
LP T655-Q1R2-34-0-30-R33-Z	Q65110A3917	TOPLED	No sufficient future volume forecast	KP DELPS1.FP-UGVI-34-Z555-10-S	Q65112A3998	TOPLED
LP T655-Q1R2-25-0-30-R33-Z	Q65110A2355	TOPLED	No sufficient future volume forecast	KP DELPS1.FP-UGVI-34-Z555-10-S	Q65112A3998	TOPLED
LP T655-Q2R2-45-0-30-R33-Z-SV	Q65110A1544	TOPLED	No sufficient future volume forecast	KP DELPS1.FP-UGVI-34-Z555-10-S	Q65112A3998	TOPLED
LS A676- Whole Device						
LS A676-Q2R1-1-0-20-R33-Z-XX	Q65112A1778	SIDELED	No sufficient future volume forecast	No replacement		
LS A676-R1R2-1-0-20-R33-Z-XX	Q65112A1180	SIDELED	No sufficient future volume forecast	No replacement		
LS A676-R1R2-1-0-20-R33-Z-JC	Q65111A6301	SIDELED	No sufficient future volume forecast	No replacement		
LS A676-Q2R2-1-0-20-R33-Z	Q65111A0939	SIDELED	No sufficient future volume forecast	No replacement		
LS A676-R2-1-0-20-R33-Z-BP	Q65110A7186	SIDELED	No sufficient future volume forecast	No replacement		
LS A676-R1S2-1-0-20-R33-Z-HE	Q65110A5067	SIDELED	No sufficient future volume forecast	No replacement		
LS A676-R1S1-1-0-20-R33-Z-BP	Q65110A5978	SIDELED	No sufficient future volume forecast	No replacement		
LS A676-R1S1-1-0-20-R33-Z-SV	Q65110A4437	SIDELED	No sufficient future volume forecast	No replacement		
LS A676-Q2R1-1-0-20-R33-Z-JCB	Q65110A4755	SIDELED	No sufficient future volume forecast	No replacement		
LS A676-Q1R1-1-0-20-R33-Z	Q65110A4800	SIDELED	No sufficient future volume forecast	No replacement		
LS A676-Q1R1-1-0-20-R33-Z-HE	Q65110A5018	SIDELED	No sufficient future volume forecast	No replacement		
LS A676-P2Q2-1-0-20-R33-Z	Q65110A4272	SIDELED	No sufficient future volume forecast	No replacement		
LS A676-P2R1-1-0-20-R33-Z	Q65110A1900	SIDELED	No sufficient future volume forecast	No replacement		
LS A676-Q1R2-1-0-20-R33-Z	Q65110A2259	SIDELED	No sufficient future volume forecast	No replacement		

DISCONTINUED				NEW (REPLACEMENT)		
Device	Ordering Code	Brand	Reason for discontinuation	Device	Datasheet Ordering Code	Brand
LS A676-R1S1-1-0-20-R33-Z	Q65110A2260	SIDELED	No sufficient future volume forecast	No replacement		
LS A676-P2S1-1-0-20-R33-Z	Q65110A2261	SIDELED	No sufficient future volume forecast	No replacement		
LS A676-P2Q2-1-0-20-R33-Z-SV	Q65110A0502	SIDELED	No sufficient future volume forecast	No replacement		
LS A676-Q1R1-1-0-20-R33-Z-SV	Q65110A1583	SIDELED	No sufficient future volume forecast	No replacement		
LS A676-Q1R2-1-0-20-R33-Z-B	Q62703Q4740	SIDELED	No sufficient future volume forecast	No replacement		
LS A67K- Whole Device						
LS A67K-J2K2-1-0-2-R33-Z	Q65111A7696	SIDELED	No sufficient future volume forecast	No replacement		
LS A67K-J2K2-1-0-2-R33-Z-KS	Q65111A4601	SIDELED	No sufficient future volume forecast	No replacement		
LS A67K-K2-1-0-2-R33-Z-BP	Q65110A6064	SIDELED	No sufficient future volume forecast	No replacement		
LS A67K-K1-1-0-2-R33-Z-BP	Q65110A6065	SIDELED	No sufficient future volume forecast	No replacement		
LS A67K-J1K2-1-0-2-R33-Z	Q65110A2016	SIDELED	No sufficient future volume forecast	No replacement		
LS A67K-K1L2-1-0-2-R33-Z	Q65110A2017	SIDELED	No sufficient future volume forecast	No replacement		
LS A67K-J1L2-1-0-2-R33-Z	Q65110A2018	SIDELED	No sufficient future volume forecast	No replacement		
LS E63B- Whole Device						
LS E63B-BBCB-1-1-50-R33-Z-BAY	Q65112A4245	Power TOPLED	No sufficient future volume forecast	LS T67F.01-U2AB-1-3A4B-20-S	Q65113A4805 (in development)	TOPLED
LS E63B-CACB-1-1-50-R33-Z-XX	Q65111A4776	Power TOPLED	No sufficient future volume forecast	LS T67F.01-U2AB-1-3A4B-20-S	Q65113A4805 (in development)	TOPLED
LS E63B-BBCB-1-1-50-R33-Z-SV	Q65110A1819	Power TOPLED	No sufficient future volume forecast	LS T67F.01-U2AB-1-3A4B-20-S	Q65113A4805 (in development)	TOPLED
LS E63B-BBCB-1-1-50-R33-Z	Q65110A2336	Power TOPLED	No sufficient future volume forecast	LS T67F.01-U2AB-1-3A4B-20-S	Q65113A4805 (in development)	TOPLED
LS E65B- Whole Device						
LS E65B-AABA-1-1-50-R33-Z-TW	Q65111A5584	Power TOPLED	No sufficient future volume forecast	LS T67F.01-U2AB-1-3A4B-20-S	Q65113A4805 (in development)	TOPLED
LS E65B-V1AA-1-1-50-R33-Z	Q65111A0486	Power TOPLED	No sufficient future volume forecast	LS T67F.01-U2AB-1-3A4B-20-S	Q65113A4805 (in development)	TOPLED
LS E65B-V1AA-1-1-50-R33-Z-VIS	Q65111A0029	Power TOPLED	No sufficient future volume forecast	LS T67F.01-U2AB-1-3A4B-20-S	Q65113A4805 (in development)	TOPLED
LS E65B-AABB-1-1-50-R33-ZH	Q65110A9300	Power TOPLED	No sufficient future volume forecast	LS T67F.01-U2AB-1-3A4B-20-S	Q65113A4805 (in development)	TOPLED
LS E65B-V1AB-1-1-50-R33-Z-KS	Q65110A5820	Power TOPLED	No sufficient future volume forecast	LS T67F.01-U2AB-1-3A4B-20-S	Q65113A4805 (in development)	TOPLED
LS E65B-V1BB-1-1-50-R33-Z	Q65110A2762	Power TOPLED	No sufficient future volume forecast	LS T67F.01-U2AB-1-3A4B-20-S	Q65113A4805 (in development)	TOPLED
LS E65B-V1AB-1-1-50-R33-Z	Q65110A2763	Power TOPLED	No sufficient future volume forecast	LS T67F.01-U2AB-1-3A4B-20-S	Q65113A4805 (in development)	TOPLED
LS E65B-AABB-1-1-50-R33-Z	Q65110A2764	Power TOPLED	No sufficient future volume forecast	LS T67F.01-U2AB-1-3A4B-20-S	Q65113A4805 (in development)	TOPLED
LS E65B-AABA-1-1-50-R33-Z	Q65110A3184	Power TOPLED	No sufficient future volume forecast	LS T67F.01-U2AB-1-3A4B-20-S	Q65113A4805 (in development)	TOPLED

DISCONTINUED				NEW (REPLACEMENT)		
Device	Ordering Code	Brand	Reason for discontinuation	Device	Datasheet Ordering Code	Brand
LS E67B- Whole Device						
LS E67B-T1U1-1-1-50-R18-Z-HAN	Q65111A6545	Power TOPLED	No sufficient future volume forecast	KS DELPS1.22 / LS T67F.01	Q65112A4763 / in development	TOPLED
LS E67B-U1V1-1-1-50-R33-Z-SV	Q65111A1981	Power TOPLED	No sufficient future volume forecast	KS DELPS1.22 / LS T67F.01	Q65112A4763 / in development	TOPLED
LS E67B-T2V1-1-1-50-R33-Z-SV	Q65110A8928	Power TOPLED	No sufficient future volume forecast	KS DELPS1.22 / LS T67F.01	Q65112A4763 / in development	TOPLED
LS E67B-S2T2-1-1-50-R18-Z	Q65110A6588	Power TOPLED	No sufficient future volume forecast	KS DELPS1.22 / LS T67F.01	Q65112A4763 / in development	TOPLED
LS E67B-T2V1-1-1-50-R18-Z-HE	Q65110A5045	Power TOPLED	No sufficient future volume forecast	KS DELPS1.22 / LS T67F.01	Q65112A4763 / in development	TOPLED
LS E67B-T2V1-1-1-50-R18-Z-DL	Q65110A5634	Power TOPLED	No sufficient future volume forecast	KS DELPS1.22 / LS T67F.01	Q65112A4763 / in development	TOPLED
LS E67B-U1V1-1-1-50-R18-Z	Q65110A4647	Power TOPLED	No sufficient future volume forecast	KS DELPS1.22 / LS T67F.01	Q65112A4763 / in development	TOPLED
LS E67B-T2V1-1-1-50-R18-ZH	Q65110A4942	Power TOPLED	No sufficient future volume forecast	KS DELPS1.22 / LS T67F.01	Q65112A4763 / in development	TOPLED
LS E67B-T2U2-1-1-50-R18-Z-F	Q65110A5005	Power TOPLED	No sufficient future volume forecast	KS DELPS1.22 / LS T67F.01	Q65112A4763 / in development	TOPLED
LS E67B-T1U2-1-1-50-R18-Z	Q65110A3322	Power TOPLED	No sufficient future volume forecast	KS DELPS1.22 / LS T67F.01	Q65112A4763 / in development	TOPLED
LS E67B-S2U1-1-1-50-R18-Z	Q65110A2319	Power TOPLED	No sufficient future volume forecast	KS DELPS1.22 / LS T67F.01	Q65112A4763 / in development	TOPLED
LS E67B-T2V1-1-1-50-R18-Z	Q65110A2320	Power TOPLED	No sufficient future volume forecast	KS DELPS1.22 / LS T67F.01	Q65112A4763 / in development	TOPLED
LS E67B-S2V1-1-1-50-R18-Z	Q65110A2321	Power TOPLED	No sufficient future volume forecast	KS DELPS1.22 / LS T67F.01	Q65112A4763 / in development	TOPLED
LS E67B-T2V1-1-1-50-R18-Z-SV	Q65110A0252	Power TOPLED	No sufficient future volume forecast	KS DELPS1.22 / LS T67F.01	Q65112A4763 / in development	TOPLED
LS E67B-U1V1-1-1-50-R18-Z-SV	Q65110A0002	Power TOPLED	No sufficient future volume forecast	KS DELPS1.22 / LS T67F.01	Q65112A4763 / in development	TOPLED
LS T67B- Whole Device						
LS T67B-T1U1-1-0-30-R18-Z-HE	Q65112A0667	TOPLED	No sufficient future volume forecast	KS DELPS1.22 / LS T67F.01	Q65112A4763 / in development	TOPLED
LS T67B-S1T2-1-0-30-R18-Z	Q65111A9318	TOPLED	No sufficient future volume forecast	KS DELPS1.22 / LS T67F.01	Q65112A4763 / in development	TOPLED
LS T67B-S1T1-1-0-30-R18-Z	Q65111A1845	TOPLED	No sufficient future volume forecast	KS DELPS1.22 / LS T67F.01	Q65112A4763 / in development	TOPLED
LS T67B-S1S2-1-0-30-R18-Z-TW	Q65111A0239	TOPLED	No sufficient future volume forecast	KS DELPS1.22 / LS T67F.01	Q65112A4763 / in development	TOPLED
LS T67B-S2U1-1-0-30-R18-ZP	Q65110A9347	TOPLED	No sufficient future volume forecast	KS DELPS1.22 / LS T67F.01	Q65112A4763 / in development	TOPLED
LS T67B-S2T2-1-0-30-R33-Z-SV	Q65110A9014	TOPLED	No sufficient future volume forecast	KS DELPS1.22 / LS T67F.01	Q65112A4763 / in development	TOPLED
LS T67B-T1U1-1-0-30-R33-ZR-MM	Q65110A7927	TOPLED	No sufficient future volume forecast	KS DELPS1.22 / LS T67F.01	Q65112A4763 / in development	TOPLED
LS T67B-T1U1-1-0-30-R18-ZR-MM	Q65110A6410	TOPLED	No sufficient future volume forecast	KS DELPS1.22 / LS T67F.01	Q65112A4763 / in development	TOPLED
LS T67B-T1U1-1-0-30-R18-ZH	Q65110A6647	TOPLED	No sufficient future volume forecast	KS DELPS1.22 / LS T67F.01	Q65112A4763 / in development	TOPLED
LS T67B-S2U1-1-0-30-R18-Z-HE	Q65110A5057	TOPLED	No sufficient future volume forecast	KS DELPS1.22 / LS T67F.01	Q65112A4763 / in development	TOPLED
LS T67B-S2U1-1-0-30-R18-Z	Q65110A4347	TOPLED	No sufficient future volume forecast	KS DELPS1.22 / LS T67F.01	Q65112A4763 / in development	TOPLED
LS T67B-S2T2-1-0-30-R18-Z	Q65110A3631	TOPLED	No sufficient future volume forecast	KS DELPS1.22 / LS T67F.01	Q65112A4763 / in development	TOPLED

DISCONTINUED				NEW (REPLACEMENT)		
Device	Ordering Code	Brand	Reason for discontinuation	Device	Datasheet Ordering Code	Brand
LS T67B-T1U1-1-0-30-R18-Z	Q65110A2206	TOPLED	No sufficient future volume forecast	KS DELPS1.22 / LS T67F.01	Q65112A4763 / in development	TOPLED
LS T67B-S1U1-1-0-30-R18-Z	Q65110A2207	TOPLED	No sufficient future volume forecast	KS DELPS1.22 / LS T67F.01	Q65112A4763 / in development	TOPLED
LS T67B-S2T2-1-0-30-R18-Z-SV	Q65110A0244	TOPLED	No sufficient future volume forecast	KS DELPS1.22 / LS T67F.01	Q65112A4763 / in development	TOPLED
LY A676- Whole Device						
LY A676-R2S1-45-0-20-R33-Z-TR	Q65112A4511	SIDELED	No sufficient future volume forecast	No replacement		
LY A676-R1T1-26-0-20-R33-Z	Q65112A2198	SIDELED	No sufficient future volume forecast	No replacement		
LY A676-R1R2-56-0-20-R33-Z-HAN	Q65112A3168	SIDELED	No sufficient future volume forecast	No replacement		
LY A676-S1S2-35-0-20-R33-Z-JC	Q65111A6300	SIDELED	No sufficient future volume forecast	No replacement		
LY A676-S1-35-0-20-R33-Z-JC	Q65111A6041	SIDELED	No sufficient future volume forecast	No replacement		
LY A676-R1S1-23-0-20-R33-Z-DL	Q65111A3853	SIDELED	No sufficient future volume forecast	No replacement		
LY A676-R2T1-4-0-20-R33-Z-HE	Q65111A1417	SIDELED	No sufficient future volume forecast	No replacement		
LY A676-R2S2-4-0-20-R33-Z-VL	Q65111A0658	SIDELED	No sufficient future volume forecast	No replacement		
LY A676-S1-45-0-20-R33-Z-BP	Q65110A8225	SIDELED	No sufficient future volume forecast	No replacement		
LY A676-S2-45-0-20-R33-Z-BP	Q65110A8224	SIDELED	No sufficient future volume forecast	No replacement		
LY A676-Q1R2-4-0-20-R33-Z-HE	Q65110A5083	SIDELED	No sufficient future volume forecast	No replacement		
LY A676-Q2R2-4-0-20-R33-Z	Q65110A5543	SIDELED	No sufficient future volume forecast	No replacement		
LY A676-R1S2-4-0-20-R33-Z-HE	Q65110A6161	SIDELED	No sufficient future volume forecast	No replacement		
LY A676-Q2R2-26-0-20-R33-Z	Q65110A6204	SIDELED	No sufficient future volume forecast	No replacement		
LY A676-R2S1-26-0-20-R33-Z-JCB	Q65110A4768	SIDELED	No sufficient future volume forecast	No replacement		
LY A676-R1R2-26-0-20-R33-Z	Q65110A4910	SIDELED	No sufficient future volume forecast	No replacement		
LY A676-Q2R2-4-0-20-R33-ZR-MM	Q65110A3790	SIDELED	No sufficient future volume forecast	No replacement		
LY A676-R1S2-46-0-20-R33-Z	Q65110A3915	SIDELED	No sufficient future volume forecast	No replacement		
LY A676-Q2S1-4-0-20-R33-Z	Q65110A4090	SIDELED	No sufficient future volume forecast	No replacement		
LY A676-Q1R2-26-0-20-R33-Z	Q65110A4275	SIDELED	No sufficient future volume forecast	No replacement		
LY A676-S1T1-45-0-20-R33-Z	Q65110A2990	SIDELED	No sufficient future volume forecast	No replacement		
LY A676-Q2S1-34-0-20-R33-Z	Q65110A3088	SIDELED	No sufficient future volume forecast	No replacement		
LY A676-R1R2-56-0-20-R33-Z-DL	Q65110A3222	SIDELED	No sufficient future volume forecast	No replacement		
LY A676-S1T1-4-0-20-R33-Z-SV	Q65110A3377	SIDELED	No sufficient future volume forecast	No replacement		
LY A676-Q1R2-4-0-20-R33-Z	Q65110A3424	SIDELED	No sufficient future volume forecast	No replacement		

DISCONTINUED				NEW (REPLACEMENT)		
Device	Ordering Code	Brand	Reason for discontinuation	Device	Datasheet Ordering Code	Brand
LY A676-Q1R2-45-0-20-R33-Z	Q65110A1899	SIDELED	No sufficient future volume forecast	No replacement		
LY A676-R1S2-26-0-20-R33-Z	Q65110A2262	SIDELED	No sufficient future volume forecast	No replacement		
LY A676-S1T1-26-0-20-R33-Z	Q65110A2263	SIDELED	No sufficient future volume forecast	No replacement		
LY A676-Q2T1-26-0-20-R33-Z	Q65110A2264	SIDELED	No sufficient future volume forecast	No replacement		
LY A676-R1S2-4-0-20-R33-Z-SV	Q65110A0576	SIDELED	No sufficient future volume forecast	No replacement		
LY A676-Q1R2-4-0-20-R33-Z-SV	Q62703Q6053	SIDELED	No sufficient future volume forecast	No replacement		
LY A67B - Whole Device						
LY A67B-T2V1-26-0-30-R33-Z	Q65112A6788	SIDELED	No sufficient future volume forecast	No replacement		
LY A67B-U1V1-26-0-30-R33-Z-HE	Q65112A0881	SIDELED	No sufficient future volume forecast	No replacement		
LY A67B-U1V1-45-0-30-R33-Z	Q65111A0053	SIDELED	No sufficient future volume forecast	No replacement		
LY A67B-U1U2-3-0-30-R33-Z	Q65110A6711	SIDELED	No sufficient future volume forecast	No replacement		
LY A67B-U1V1-45-0-30-R33-Z-F	Q65110A6725	SIDELED	No sufficient future volume forecast	No replacement		
LY A67B-T2V1-56-0-30-R33-Z	Q65110A5792	SIDELED	No sufficient future volume forecast	No replacement		
LY A67B-T1V1-45-0-30-R33-Z	Q65110A5793	SIDELED	No sufficient future volume forecast	No replacement		
LY A67B-T1V1-34-0-30-R33-Z	Q65110A4511	SIDELED	No sufficient future volume forecast	No replacement		
LY A67B-T2V1-46-0-30-R33-Z-JC	Q65110A4527	SIDELED	No sufficient future volume forecast	No replacement		
LY A67B-U1V1-26-0-30-R33-Z	Q65110A4873	SIDELED	No sufficient future volume forecast	No replacement		
LY A67B-T2U2-26-0-30-R33-Z	Q65110A4874	SIDELED	No sufficient future volume forecast	No replacement		
LY A67B-U1V1-46-0-30-R33-Z	Q65110A3901	SIDELED	No sufficient future volume forecast	No replacement		
LY A67B-T2V1-46-0-30-R33-Z	Q65110A4065	SIDELED	No sufficient future volume forecast	No replacement		
LY A67B-T1V1-26-0-30-R33-Z	Q65110A2309	SIDELED	No sufficient future volume forecast	No replacement		
LY A67K - Whole Device						
LY A67K-K2L2-4-0-2-R33-Z-VL	Q65111A1430	SIDELED	No sufficient future volume forecast	No replacement		
LY A67K-K1L1-46-0-2-R33-Z	Q65111A1140	SIDELED	No sufficient future volume forecast	No replacement		
LY A67K-K1K2-45-0-2-R33-Z	Q65110A6383	SIDELED	No sufficient future volume forecast	No replacement		
LY A67K-K1L2-4-0-2-R33-Z	Q65110A6177	SIDELED	No sufficient future volume forecast	No replacement		
LY A67K-J2L1-26-0-2-R33-Z	Q65110A2065	SIDELED	No sufficient future volume forecast	No replacement		
LY A67K-K2M1-26-0-2-R33-Z	Q65110A2066	SIDELED	No sufficient future volume forecast	No replacement		
LY A67K-J2M1-26-0-2-R33-Z	Q65110A2067	SIDELED	No sufficient future volume forecast	No replacement		

DISCONTINUED				NEW (REPLACEMENT)		
Device	Ordering Code	Brand	Reason for discontinuation	Device	Datasheet Ordering Code	Brand
LY E63B - Whole Device						
LY E63B-CBEA-46-1-50-R33-Z	Q65111A3250	Power TOPLED	No sufficient future volume forecast	LY T67F.01-V2AB-36-3A4B-20-S	Q65113A4804 (in development)	TOPLED
LY E63B-DAEA-3-1-50-R33-Z-XX	Q65110A8891	Power TOPLED	No sufficient future volume forecast	LY T67F.01-V2AB-36-3A4B-20-S	Q65113A4804 (in development)	TOPLED
LY E63B-DAEA-45-3A4A-50-R33-Z-XX	Q65110A5529	Power TOPLED	No sufficient future volume forecast	LY T67F.01-V2AB-36-3A4B-20-S	Q65113A4804 (in development)	TOPLED
LY E63B-CBDB-35-1-50-R33-Z	Q65110A5795	Power TOPLED	No sufficient future volume forecast	LY T67F.01-V2AB-36-3A4B-20-S	Q65113A4804 (in development)	TOPLED
LY E63B-DADB-34-1-50-R33-Z	Q65110A4353	Power TOPLED	No sufficient future volume forecast	LY T67F.01-V2AB-36-3A4B-20-S	Q65113A4804 (in development)	TOPLED
LY E63B-DADB-45-1-50-R33-Z-XX	Q65110A3225	Power TOPLED	No sufficient future volume forecast	LY T67F.01-V2AB-36-3A4B-20-S	Q65113A4804 (in development)	TOPLED
LY E63B-DADB-56-1-50-R33-Z-XX	Q65110A3452	Power TOPLED	No sufficient future volume forecast	LY T67F.01-V2AB-36-3A4B-20-S	Q65113A4804 (in development)	TOPLED
LY E63B-CBEA-45-1-50-R33-Z	Q65110A3532	Power TOPLED	No sufficient future volume forecast	LY T67F.01-V2AB-36-3A4B-20-S	Q65113A4804 (in development)	TOPLED
LY E63B-DAEA-45-1-50-R33-Z	Q65110A3546	Power TOPLED	No sufficient future volume forecast	LY T67F.01-V2AB-36-3A4B-20-S	Q65113A4804 (in development)	TOPLED
LY E63B-CBEA-4-1-50-R33-Z	Q65110A3618	Power TOPLED	No sufficient future volume forecast	LY T67F.01-V2AB-36-3A4B-20-S	Q65113A4804 (in development)	TOPLED
LY E63B-DAEA-35-1-50-R33-Z-SV	Q65110A1821	Power TOPLED	No sufficient future volume forecast	LY T67F.01-V2AB-36-3A4B-20-S	Q65113A4804 (in development)	TOPLED
LY E63B-CBEA-26-1-50-R33-Z	Q65110A2339	Power TOPLED	No sufficient future volume forecast	LY T67F.01-V2AB-36-3A4B-20-S	Q65113A4804 (in development)	TOPLED
LY E65B - Whole Device						
LY E65B-BBCA-45-1-50-R33-Z-OL	Q65112A6328	Power TOPLED	No sufficient future volume forecast	LY T67F.01-V2AB-36-3A4B-20-S	Q65113A4804 (in development)	TOPLED
LY E65B-BBCA-45-1-50-R33-GDE	Q65112A5357	Power TOPLED	No sufficient future volume forecast	LY T67F.01-V2AB-36-3A4B-20-S	Q65113A4804 (in development)	TOPLED
LY E65B-BBCA-45-1-50-R33-Z-BAY	Q65112A2742	Power TOPLED	No sufficient future volume forecast	LY T67F.01-V2AB-36-3A4B-20-S	Q65113A4804 (in development)	TOPLED
LY E65B-BABB-34-1-50-R33-Z-XX	Q65111A9971	Power TOPLED	No sufficient future volume forecast	LY T67F.01-V2AB-36-3A4B-20-S	Q65113A4804 (in development)	TOPLED
LY E65B-ABBB-34-1-50-R33-Z	Q65111A2845	Power TOPLED	No sufficient future volume forecast	LY T67F.01-V2AB-36-3A4B-20-S	Q65113A4804 (in development)	TOPLED
LY E65B-ABBB-34-1-50-R33-Z-XX	Q65111A2846	Power TOPLED	No sufficient future volume forecast	LY T67F.01-V2AB-36-3A4B-20-S	Q65113A4804 (in development)	TOPLED
LY E65B-BBCA-45-1-50-R33-ZI-XX	Q65111A1543	Power TOPLED	No sufficient future volume forecast	LY T67F.01-V2AB-36-3A4B-20-S	Q65113A4804 (in development)	TOPLED
LY E65B-ABBB-35-1-50-R33-Z	Q65111A0986	Power TOPLED	No sufficient future volume forecast	LY T67F.01-V2AB-36-3A4B-20-S	Q65113A4804 (in development)	TOPLED
LY E65B-BACA-4-1-50-R33-Z	Q65110A6935	Power TOPLED	No sufficient future volume forecast	LY T67F.01-V2AB-36-3A4B-20-S	Q65113A4804 (in development)	TOPLED
LY E65B-AABB-45-1-50-R33-Z-JCB	Q65110A5232	Power TOPLED	No sufficient future volume forecast	LY T67F.01-V2AB-36-3A4B-20-S	Q65113A4804 (in development)	TOPLED
LY E65B-AABA-35-1-50-R33-Z-XX	Q65110A5560	Power TOPLED	No sufficient future volume forecast	LY T67F.01-V2AB-36-3A4B-20-S	Q65113A4804 (in development)	TOPLED
LY E65B-BABB-34-1-50-R33-Z-JC	Q65110A5972	Power TOPLED	No sufficient future volume forecast	LY T67F.01-V2AB-36-3A4B-20-S	Q65113A4804 (in development)	TOPLED
LY E65B-BACA-35-1-50-R33-Z	Q65110A4354	Power TOPLED	No sufficient future volume forecast	LY T67F.01-V2AB-36-3A4B-20-S	Q65113A4804 (in development)	TOPLED
LY E65B-BBCA-34-1-50-R33-Z	Q65110A4355	Power TOPLED	No sufficient future volume forecast	LY T67F.01-V2AB-36-3A4B-20-S	Q65113A4804 (in development)	TOPLED
LY E65B-BACA-45-1-50-R33-Z	Q65110A3695	Power TOPLED	No sufficient future volume forecast	LY T67F.01-V2AB-36-3A4B-20-S	Q65113A4804 (in development)	TOPLED

DISCONTINUED				NEW (REPLACEMENT)		
Device	Ordering Code	Brand	Reason for discontinuation	Device	Datasheet Ordering Code	Brand
LY E65B-AABA-45-1-50-R33-Z-XX	Q65110A3830	Power TOPLED	No sufficient future volume forecast	LY T67F.01-V2AB-36-3A4B-20-S	Q65113A4804 (in development)	TOPLED
LY E65B-BBCA-45-1-50-R33-Z	Q65110A4064	Power TOPLED	No sufficient future volume forecast	LY T67F.01-V2AB-36-3A4B-20-S	Q65113A4804 (in development)	TOPLED
LY E65B-BABB-56-1-50-R33-Z-XX	Q65110A3216	Power TOPLED	No sufficient future volume forecast	LY T67F.01-V2AB-36-3A4B-20-S	Q65113A4804 (in development)	TOPLED
LY E65B-ABCA-45-1-50-R33-Z	Q65110A3234	Power TOPLED	No sufficient future volume forecast	LY T67F.01-V2AB-36-3A4B-20-S	Q65113A4804 (in development)	TOPLED
LY E65B-BACA-24-1-50-R33-Z	Q65110A3517	Power TOPLED	No sufficient future volume forecast	LY T67F.01-V2AB-36-3A4B-20-S	Q65113A4804 (in development)	TOPLED
LY E65B-BACA-45-1-50-R33-Z-B	Q65110A3547	Power TOPLED	No sufficient future volume forecast	LY T67F.01-V2AB-36-3A4B-20-S	Q65113A4804 (in development)	TOPLED
LY E65B-AABB-26-1-50-R33-Z	Q65110A2352	Power TOPLED	No sufficient future volume forecast	LY T67F.01-V2AB-36-3A4B-20-S	Q65113A4804 (in development)	TOPLED
LY E65B-BACA-26-1-50-R33-Z	Q65110A2353	Power TOPLED	No sufficient future volume forecast	LY T67F.01-V2AB-36-3A4B-20-S	Q65113A4804 (in development)	TOPLED
LY E65B-AACA-26-1-50-R33-Z	Q65110A2354	Power TOPLED	No sufficient future volume forecast	LY T67F.01-V2AB-36-3A4B-20-S	Q65113A4804 (in development)	TOPLED
LY E67B - Whole Device						
LY E67B-V2AB-45-1-50-R18-Z-OL	Q65112A6372	Power TOPLED	No sufficient future volume forecast	KY DELPS1.22 / LY T67F.01	Q65112A4009 / in development	TOPLED
LY E67B-V1V2-45-1-50-R18-Z-XX	Q65111A7017	Power TOPLED	No sufficient future volume forecast	KY DELPS1.22 / LY T67F.01	Q65112A4009 / in development	TOPLED
LY E67B-U2V2-45-1-50-R18-Z-VAR	Q65111A5863	Power TOPLED	No sufficient future volume forecast	KY DELPS1.22 / LY T67F.01	Q65112A4009 / in development	TOPLED
LY E67B-V1AA-56-1-50-R18-Z	Q65111A3605	Power TOPLED	No sufficient future volume forecast	KY DELPS1.22 / LY T67F.01	Q65112A4009 / in development	TOPLED
LY E67B-U2V2-45-1-50-R33-ZH-CAJ	Q65111A2825	Power TOPLED	No sufficient future volume forecast	KY DELPS1.22 / LY T67F.01	Q65112A4009 / in development	TOPLED
LY E67B-V2AA-4-1-50-R18-Z-VL	Q65111A2474	Power TOPLED	No sufficient future volume forecast	KY DELPS1.22 / LY T67F.01	Q65112A4009 / in development	TOPLED
LY E67B-V1V2-34-1-50-R33-ZH	Q65111A1760	Power TOPLED	No sufficient future volume forecast	KY DELPS1.22 / LY T67F.01	Q65112A4009 / in development	TOPLED
LY E67B-U2V1-45-1-50-R18-ZH	Q65111A1855	Power TOPLED	No sufficient future volume forecast	KY DELPS1.22 / LY T67F.01	Q65112A4009 / in development	TOPLED
LY E67B-U1V1-4-1-50-R18-Z-HE	Q65111A1380	Power TOPLED	No sufficient future volume forecast	KY DELPS1.22 / LY T67F.01	Q65112A4009 / in development	TOPLED
LY E67B-U1V1-45-1-50-R18-ZH	Q65111A1427	Power TOPLED	No sufficient future volume forecast	KY DELPS1.22 / LY T67F.01	Q65112A4009 / in development	TOPLED
LY E67B-U1V2-4-1-50-R18-Z	Q65111A0170	Power TOPLED	No sufficient future volume forecast	KY DELPS1.22 / LY T67F.01	Q65112A4009 / in development	TOPLED
LY E67B-T2V1-45-1-50-R33-Z	Q65111A0436	Power TOPLED	No sufficient future volume forecast	KY DELPS1.22 / LY T67F.01	Q65112A4009 / in development	TOPLED
LY E67B-U2V1-4-1-50-R18-Z-XX	Q65111A0478	Power TOPLED	No sufficient future volume forecast	KY DELPS1.22 / LY T67F.01	Q65112A4009 / in development	TOPLED
LY E67B-V1AA-45-1-50-R33-ZH	Q65110A9575	Power TOPLED	No sufficient future volume forecast	KY DELPS1.22 / LY T67F.01	Q65112A4009 / in development	TOPLED
LY E67B-U2V2-4-1-50-R18-Z-XX	Q65110A9058	Power TOPLED	No sufficient future volume forecast	KY DELPS1.22 / LY T67F.01	Q65112A4009 / in development	TOPLED
LY E67B-V2AA-45-1-50-R33-Z	Q65110A8164	Power TOPLED	No sufficient future volume forecast	KY DELPS1.22 / LY T67F.01	Q65112A4009 / in development	TOPLED
LY E67B-U2AA-34-1-50-R18-Z	Q65110A7042	Power TOPLED	No sufficient future volume forecast	KY DELPS1.22 / LY T67F.01	Q65112A4009 / in development	TOPLED
LY E67B-V1-3-1-50-R18-Z-XX	Q65110A7554	Power TOPLED	No sufficient future volume forecast	KY DELPS1.22 / LY T67F.01	Q65112A4009 / in development	TOPLED
LY E67B-T2V1-34-1-50-R18-Z	Q65110A6474	Power TOPLED	No sufficient future volume forecast	KY DELPS1.22 / LY T67F.01	Q65112A4009 / in development	TOPLED

DISCONTINUED				NEW (REPLACEMENT)		
Device	Ordering Code	Brand	Reason for discontinuation	Device	Datasheet Ordering Code	Brand
LY E67B-U2AA-34-1-50-R18-Z-SV	Q65110A6579	Power TOPLED	No sufficient future volume forecast	KY DELPS1.22 / LY T67F.01	Q65112A4009 / in development	TOPLED
LY E67B-U1V1-34-1-50-R33-Z	Q65110A6580	Power TOPLED	No sufficient future volume forecast	KY DELPS1.22 / LY T67F.01	Q65112A4009 / in development	TOPLED
LY E67B-U2AA-45-1-50-R18-Z-HE	Q65110A5040	Power TOPLED	No sufficient future volume forecast	KY DELPS1.22 / LY T67F.01	Q65112A4009 / in development	TOPLED
LY E67B-V1AA-45-1-50-R18-Z-HE	Q65110A5097	Power TOPLED	No sufficient future volume forecast	KY DELPS1.22 / LY T67F.01	Q65112A4009 / in development	TOPLED
LY E67B-V1AA-4-1-50-R33-Z-HE	Q65110A5098	Power TOPLED	No sufficient future volume forecast	KY DELPS1.22 / LY T67F.01	Q65112A4009 / in development	TOPLED
LY E67B-V2AB-45-1-50-R18-Z	Q65110A5330	Power TOPLED	No sufficient future volume forecast	KY DELPS1.22 / LY T67F.01	Q65112A4009 / in development	TOPLED
LY E67B-U2V2-34-1-50-R18-Z	Q65110A5367	Power TOPLED	No sufficient future volume forecast	KY DELPS1.22 / LY T67F.01	Q65112A4009 / in development	TOPLED
LY E67B-U2AA-56-1-50-R18-Z	Q65110A5424	Power TOPLED	No sufficient future volume forecast	KY DELPS1.22 / LY T67F.01	Q65112A4009 / in development	TOPLED
LY E67B-U2V2-45-1-50-R18-Z	Q65110A5521	Power TOPLED	No sufficient future volume forecast	KY DELPS1.22 / LY T67F.01	Q65112A4009 / in development	TOPLED
LY E67B-V2AA-45-1-50-R18-Z-JC	Q65110A5973	Power TOPLED	No sufficient future volume forecast	KY DELPS1.22 / LY T67F.01	Q65112A4009 / in development	TOPLED
LY E67B-U2V2-23-1-50-R18-Z	Q65110A4357	Power TOPLED	No sufficient future volume forecast	KY DELPS1.22 / LY T67F.01	Q65112A4009 / in development	TOPLED
LY E67B-U1V2-26-1-50-R33-Z	Q65110A4391	Power TOPLED	No sufficient future volume forecast	KY DELPS1.22 / LY T67F.01	Q65112A4009 / in development	TOPLED
LY E67B-V1AA-34-1-50-R18-Z	Q65110A4480	Power TOPLED	No sufficient future volume forecast	KY DELPS1.22 / LY T67F.01	Q65112A4009 / in development	TOPLED
LY E67B-U2AA-26-1-50-R33-Z	Q65110A4743	Power TOPLED	No sufficient future volume forecast	KY DELPS1.22 / LY T67F.01	Q65112A4009 / in development	TOPLED
LY E67B-V1AA-4-1-50-R33-Z	Q65110A4844	Power TOPLED	No sufficient future volume forecast	KY DELPS1.22 / LY T67F.01	Q65112A4009 / in development	TOPLED
LY E67B-U2AA-45-1-50-R33-ZH	Q65110A4948	Power TOPLED	No sufficient future volume forecast	KY DELPS1.22 / LY T67F.01	Q65112A4009 / in development	TOPLED
LY E67B-U2V1-34-3A3B-50-R18-Z-LM	Q65110A3860	Power TOPLED	No sufficient future volume forecast	KY DELPS1.22 / LY T67F.01	Q65112A4009 / in development	TOPLED
LY E67B-U2AA-45-1-50-R33-Z-SV	Q65110A3977	Power TOPLED	No sufficient future volume forecast	KY DELPS1.22 / LY T67F.01	Q65112A4009 / in development	TOPLED
LY E67B-U2V2-26-1-50-R18-Z	Q65110A4037	Power TOPLED	No sufficient future volume forecast	KY DELPS1.22 / LY T67F.01	Q65112A4009 / in development	TOPLED
LY E67B-V1AA-45-1-50-R18-Z	Q65110A4063	Power TOPLED	No sufficient future volume forecast	KY DELPS1.22 / LY T67F.01	Q65112A4009 / in development	TOPLED
LY E67B-U2AA-4-1-50-R18-Z	Q65110A4092	Power TOPLED	No sufficient future volume forecast	KY DELPS1.22 / LY T67F.01	Q65112A4009 / in development	TOPLED
LY E67B-U2AA-34-1-50-R33-Z-SV	Q65110A4161	Power TOPLED	No sufficient future volume forecast	KY DELPS1.22 / LY T67F.01	Q65112A4009 / in development	TOPLED
LY E67B-V1V2-4-1-50-R18-Z	Q65110A4265	Power TOPLED	No sufficient future volume forecast	KY DELPS1.22 / LY T67F.01	Q65112A4009 / in development	TOPLED
LY E67B-V2AA-45-1-50-R18-Z	Q65110A3287	Power TOPLED	No sufficient future volume forecast	KY DELPS1.22 / LY T67F.01	Q65112A4009 / in development	TOPLED
LY E67B-U2AA-45-1-50-R33-Z	Q65110A3329	Power TOPLED	No sufficient future volume forecast	KY DELPS1.22 / LY T67F.01	Q65112A4009 / in development	TOPLED
LY E67B-V1AA-26-1-50-R18-Z	Q65110A3330	Power TOPLED	No sufficient future volume forecast	KY DELPS1.22 / LY T67F.01	Q65112A4009 / in development	TOPLED
LY E67B-U1V2-25-1-50-R18-Z	Q65110A3415	Power TOPLED	No sufficient future volume forecast	KY DELPS1.22 / LY T67F.01	Q65112A4009 / in development	TOPLED
LY E67B-T2V1-26-1-50-R33-Z	Q65110A3518	Power TOPLED	No sufficient future volume forecast	KY DELPS1.22 / LY T67F.01	Q65112A4009 / in development	TOPLED
LY E67B-T2V1-26-1-50-R18-Z	Q65110A2322	Power TOPLED	No sufficient future volume forecast	KY DELPS1.22 / LY T67F.01	Q65112A4009 / in development	TOPLED

DISCONTINUED				NEW (REPLACEMENT)		
Device	Ordering Code	Brand	Reason for discontinuation	Device	Datasheet Ordering Code	Brand
LY E67B-U2AA-26-1-50-R18-Z	Q65110A2323	Power TOPLED	No sufficient future volume forecast	KY DELPS1.22 / LY T67F.01	Q65112A4009 / in development	TOPLED
LY E67B-T2AA-26-1-50-R18-Z	Q65110A2324	Power TOPLED	No sufficient future volume forecast	KY DELPS1.22 / LY T67F.01	Q65112A4009 / in development	TOPLED
LY E67B-U2AA-34-1-50-R18-Z-SV	Q65110A0036	Power TOPLED	No sufficient future volume forecast	KY DELPS1.22 / LY T67F.01	Q65112A4009 / in development	TOPLED
LAY T67B - Whole Device						
LAY T67B-T2V1-1-1+U2V2-45-1-50-R18-QZ-XX	Q65111A2811	Multi TOPLED	No sufficient future volume forecast	No replacement		
LAY T67B-U1V1-1-1+U2V2-3-1-50-R18-Z	Q65110A7624	Multi TOPLED	No sufficient future volume forecast	No replacement		
LAY T67B-U1V1-1-1+U2V2-45-1-50-R18-Z-MM	Q65110A6674	Multi TOPLED	No sufficient future volume forecast	No replacement		
LAY T67B-T1U2-1-1+V1V2-34-1-50-R18-Z	Q65110A6860	Multi TOPLED	No sufficient future volume forecast	No replacement		
LAY T67B-T1V1-1-1+U2V2-45-1-50-R18-Z-HE	Q65110A5068	Multi TOPLED	No sufficient future volume forecast	No replacement		
LAY T67B-U1V1-1-1+U2V2-45-1-50-R18-Z-SV	Q65110A4817	Multi TOPLED	No sufficient future volume forecast	No replacement		
LAY T67B-T2V1-1-1+U2V2-45-1-50-R18-Z	Q65110A2433	Multi TOPLED	No sufficient future volume forecast	No replacement		
LSY T67B - Whole Device						
LSY T67B-S2T1-1-0+T2U1-45-0-30-R18-ZR-MM	Q65111A2670	Multi TOPLED	No sufficient future volume forecast	No replacement		
LSY T67B-S2T2-1-0+T2U2-45-0-30-R18-ZR-MM	Q65111A1650	Multi TOPLED	No sufficient future volume forecast	No replacement		
LSY T67B-S1T2-1-0+T1U2-35-0-30-R18-Z	Q65110A8419	Multi TOPLED	No sufficient future volume forecast	No replacement		
LSY T67B-S1T1-1-0+T1U1-45-0-30-R18-Z-JC	Q65110A7983	Multi TOPLED	No sufficient future volume forecast	No replacement		
LSY T67B-S2T2-1-0+T1U1-26-0-30-R18-ZR-MM	Q65110A6407	Multi TOPLED	No sufficient future volume forecast	No replacement		
LSY T67B-S1T1-1-0+T1U1-4-0-30-R18-Z-JC	Q65110A6976	Multi TOPLED	No sufficient future volume forecast	No replacement		
LSY T67B-S1T1-1-0+T1U1-4-0-30-R18-Z-B	Q65110A6266	Multi TOPLED	No sufficient future volume forecast	No replacement		
LSY T67B-R2S2-1-0+S2T2-26-0-30-R18-Z	Q65110A2447	Multi TOPLED	No sufficient future volume forecast	No replacement		
LSY T67B-S1T2-1-0+T1U2-26-0-30-R18-Z	Q65110A2448	Multi TOPLED	No sufficient future volume forecast	No replacement		
LSY T67B-R2T2-1-0+S2U2-26-0-30-R18-Z	Q65110A2449	Multi TOPLED	No sufficient future volume forecast	No replacement		
LSY T67B-S2T2-1-0+T1U2-35-0-30-R18-Z-SV	Q65110A0272	Multi TOPLED	No sufficient future volume forecast	No replacement		
ZS T676 - Whole Device						
ZS T676-Q2R2-1-0-20-R18-ZR-MM	Q65111A6460	TOPLED	No sufficient future volume forecast	KS DELMS1.22-QHRI-68-E6L4-20-R18	Q65112A1792	TOPLED
ZY T676 - Whole Device						
ZY T676-R2S2-35-0-20-R18-Z-MM	Q65111A6474	TOPLED	No sufficient future volume forecast	KY DELMS1.22-RHSI-26-G6N4-20-R18	Q65112A1787	TOPLED
ZP T676 - Whole Device						
ZP T676-M1N1-35-0-20-R18-ZR-MM	Q65111A6475	TOPLED	No sufficient future volume forecast	KP DELMS1.22-MGNH-25-E6L6-20-S	Q65112A4856	TOPLED

Sensing is life

amul OSRAM

Changes in automotive low/mid power portfolio

Customer Info Package for:
OS-PDN-2022-13: HOP/Classic - changes in automotive low/mid power portfolio
Status: June 2022

OS AM INT

Discontinuation of outdated InGaAlP chip technology and low volume devices

Motivation and Impact

Motivation

- Reduce complexity in value chain
- Short term discontinuations
- Streamline the product portfolio
- Not for new design - OS-NFND-2021-018 – published by ams-OSRAM
- Short term discontinuations

Affected Devices:

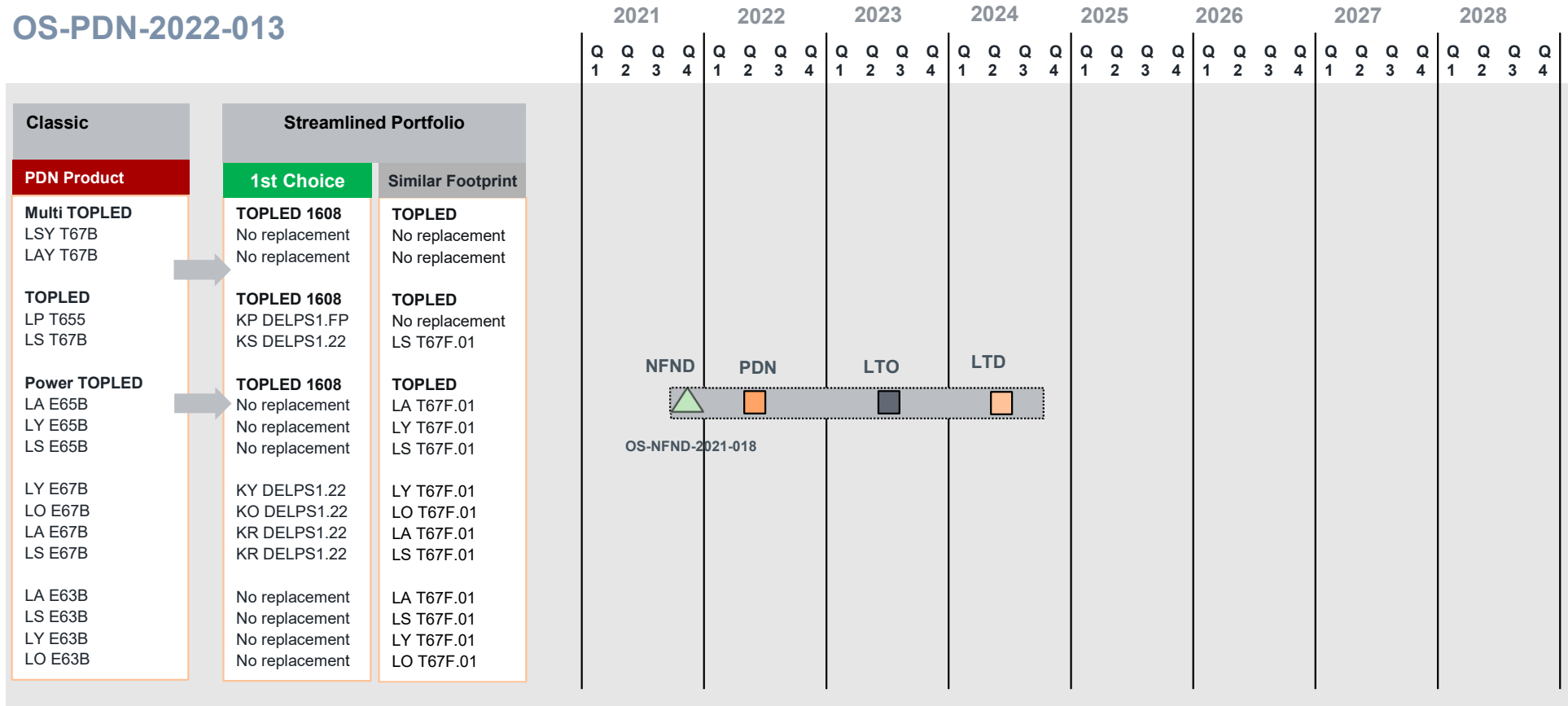
TOPLED	Mini TOPLED	Power TOPLED	SIDELED	Multi TOPLED
LS T67B	LP M675	LA E65B	LS A676	LSY T67B
LP T655		LY E65B	LY A676	LAY T67B
ZS T676		LS E65B	LO A67K	
ZY T676		LY E67B	LS A67K	
ZP T676		LO E67B	LY A67K	
		LA E67B	LG A67K	
		LS E67B	LP A675	
		LA E63B	LY A67B	
		LS E63B		
		LY E63B		
		LO E63B		

Discontinuation of outdated InGaAIP chip technology and low volume devices

Timeline for TOPLED / Power TOPLED and Multi TOPLED with HOP chip technology

△ NFND ■ PDN ■ LTO ■ LTD

OS-PDN-2022-013



Sensing is life

amun OSRAM

Thank you

For internal use