



ANATECH ELECTRONICS INC
RF & Microwave Filters & Products

266.5 MHz LC Bandpass Filter

Part Number: AE266.5B5314



Electrical Specifications

Center Frequency: 266.5 MHz
1.5dB Passband: 202 MHz to 331 MHz
Insertion Loss: <1.5dB
Return Loss: >14.0dB
Ripple: 0.01dB
Rejection: ≥50dB @ 0-153 MHz
Rejection2: ≥50dB @ 404 MHz to 662 MHz
Rejection3: ≥35dB @ 662 MHz to 3000 MHz
Impedance: 50 Ohms

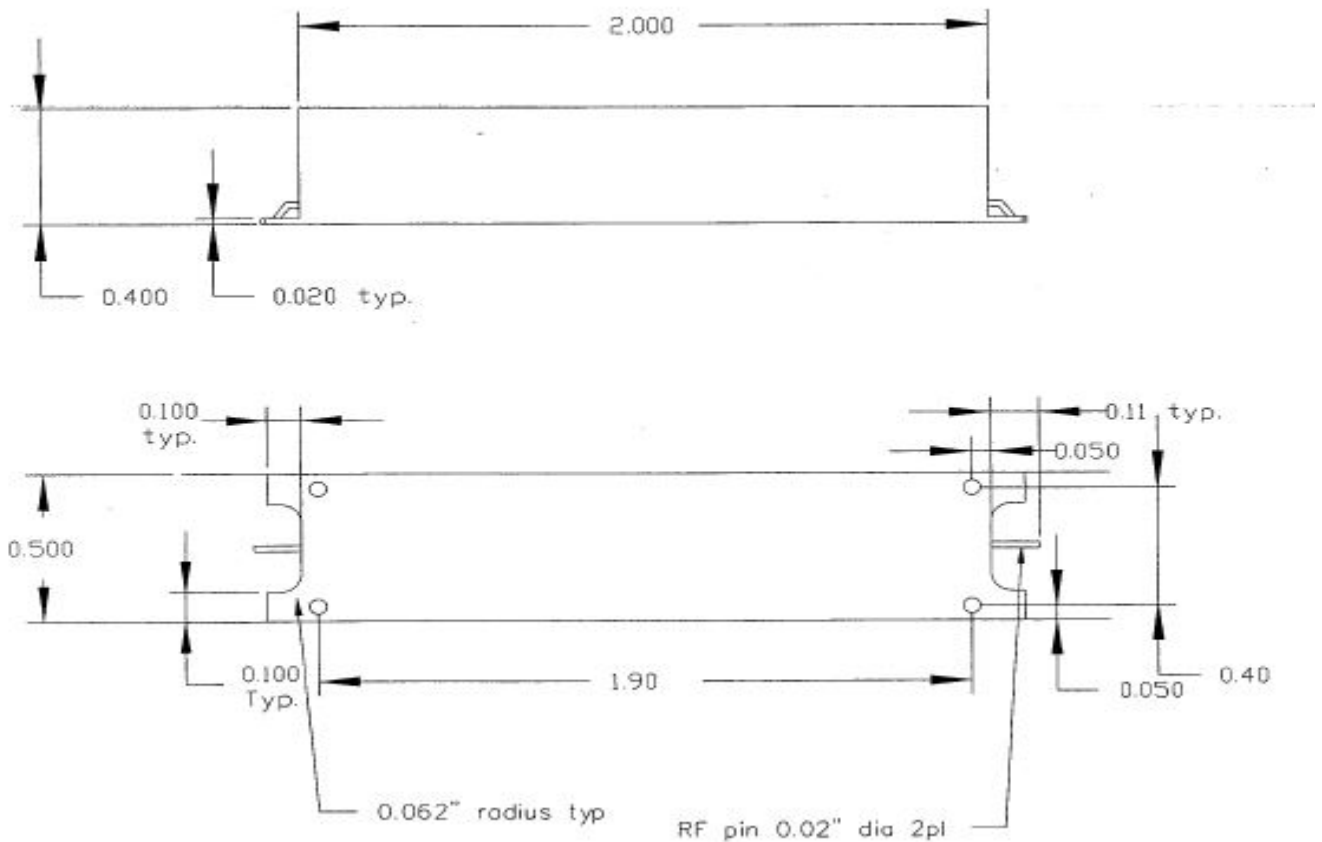
Mechanical

Connector Type: Surface-Mount
Dimensions: 2.0" x 0.5" x 0.4" in.

Environmental

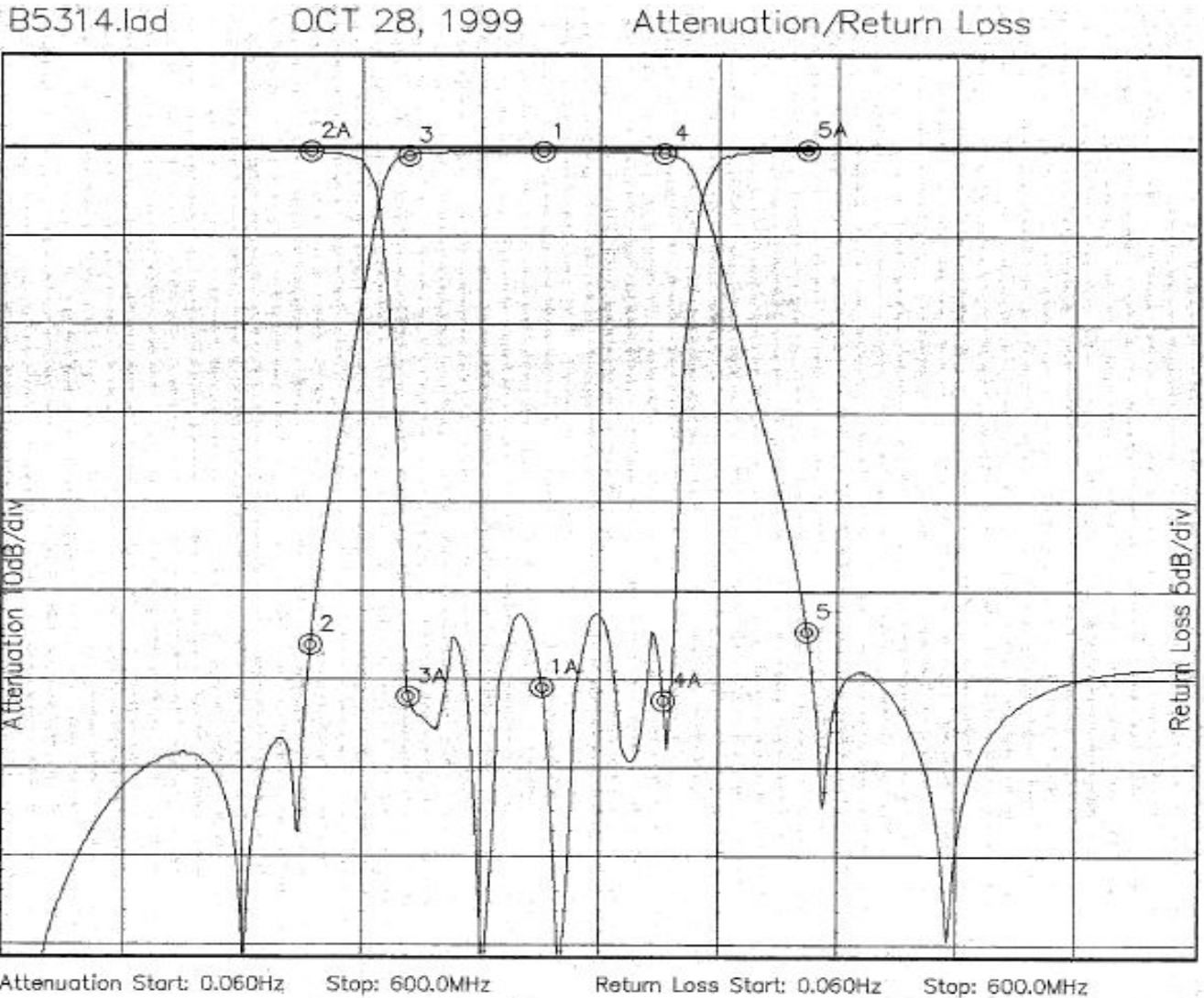
Operating Temperature: -25°C to +70°C
Storage Temperature: -40°C to +90°C
Shock: 10 G. 11ms
Vibration: 10 G. 5 to 200Hz

Outline Drawing:





Response Plot:



Marker 1 Freq 270.43MHz Atten -0.400dB
 Marker 2 Freq 153.15MHz Atten -55.858dB
 Marker 3 Freq 202.58MHz Atten -0.836dB
 Marker 4 Freq 331.50MHz Atten -0.689dB
 Marker 5 Freq 404.20MHz Atten -54.364dB

Marker 1A Freq 270.43MHz Ret Loss -30.305dB
 Marker 2A Freq 153.15MHz Ret Loss -0.236dB
 Marker 3A Freq 202.58MHz Ret Loss -30.856dB
 Marker 4A Freq 331.50MHz Ret Loss -31.047dB
 Marker 5A Freq 404.20MHz Ret Loss -0.091dB