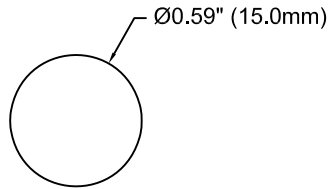
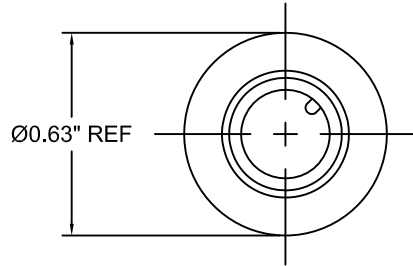
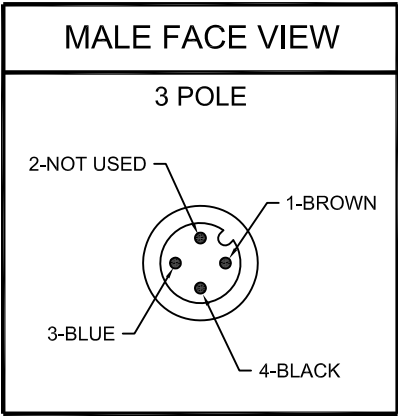
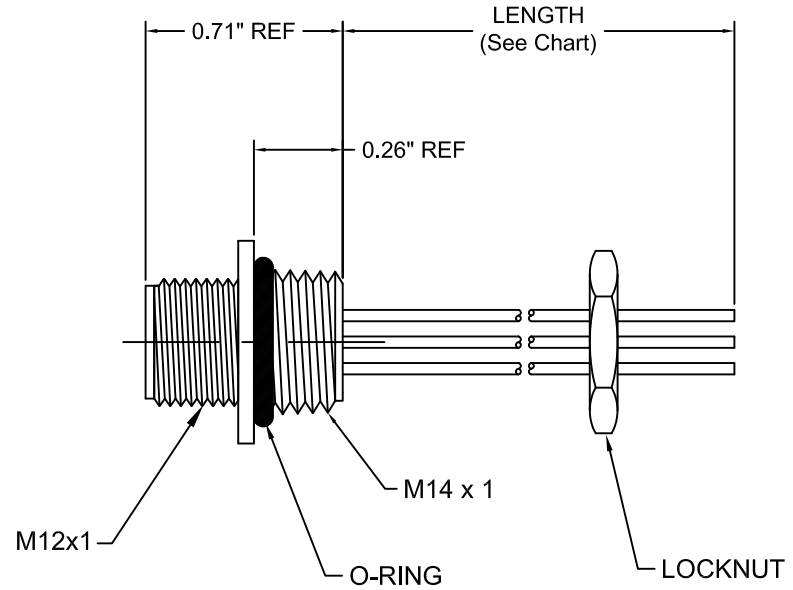


13 12 11 10 9 8 7 6 5 4 3 2 1

MATERIAL #	ENGINEERING #	LENGTH
1200700076	8R3E06A18A120	12.00IN (+0.75" / -0)
1200700078	8R3E06A18M010	1.0M (+55.6mm / -0)



TYPICAL KNOCKOUT HOLE



SPECS:
 SHELL: BLACK ANODIZED ALUMINUM
 INSERT: BLACK NYLON
 CONTACTS: GOLD PLATED COPPER ALLOY
 WIRES: 22AWG PVC
 O-RING: BLACK NITRILE RUBBER
 LOCKNUT: ZINC PLATED STEEL
 ELECTRICAL: 250V AC/DC; 4A
 TEMPERATURE: -20°C to 80°C
 PROTECTION: IP67

REFERENCE
USE ONLY

DESCRIPTION REV	GENERAL TOLERANCES (UNLESS SPECIFIED)		DIMENSION STYLE	SCALE	DESIGN UNITS	THIRD ANGLE PROJECTION
	mm	INCH	DRAWN BY	DATE	TITLE	
4 PLACES			RB		BRAD CONNECTIVITY MICRO-CHANGE - M12 3P - MALE RECEPTACLE - M14 MOLEX INCORPORATED	
3 PLACES			CHECKED BY	DATE		
2 PLACES			APPROVED BY	DATE		
1 PLACE						
DRAFT WHERE APPLICABLE MUST REMAIN WITHIN DIMENSIONS			MATERIAL NO. SEE CHART	DOCUMENT 8R3E06A18XXXX	SHEET NO. 1 OF 1	
THIS DRAWING CONTAINS INFORMATION THAT IS PROPRIETARY TO MOLEX INCORPORATED AND SHOULD NOT BE USED WITHOUT WRITTEN PERMISSION						

13 12 11 10 9 8 7 6 5 4 3 2 1