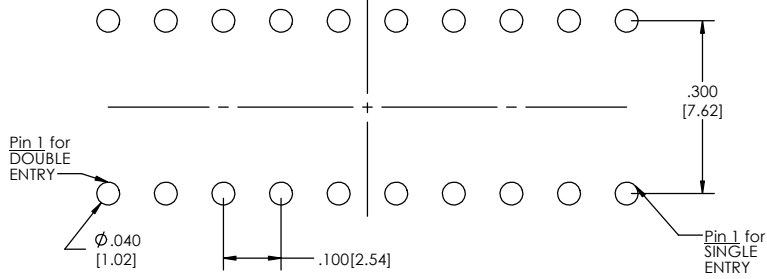
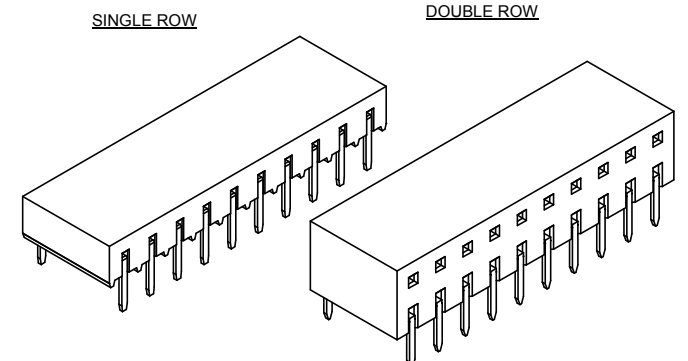
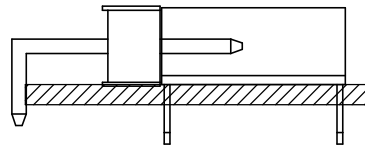


Recommended P.C. Board Layout
SCALE 6:1



Please Note:
Both the Single Row and the Double Row have the same Recommended P.C. Board Layout. But Pin 1 is in different locations.

APPLICATION



BCSS-1 **XX** - **X** - **08** - **XX** - **XXX** - **LF**
(A) (B) (C) (D) (E) (F)

- A. Pins Per Row - 03 through 40
- B. Row Specification - S= Single Row - D= Double Row
- C. Pin Options - See Pin Options below
- D. Plating Options - See Plating Options below
- E. Polarized Position - Leave blank if not needed - If required, specify empty pin position - e.g. 012 for Pin 12
- F. Lead Free

Mates With:

BSTC	TSHCR
BSTCM	TSHCRE
BSTCR	TSHCRSM
BSTCRSM	TSHR
BSTS	TSHRE
LBSTCM	TSHS
LTSHCR	TSHSCM
LTSHCRE	TSHSM
LTSHR	ULTSHSM
LTSHRE	ULTSHC
LTSHSM	ULTHSCR
TSHC	

Plating options	
G	-10µ Gold on Contact Area/ Flash on Tail
T	-Matte Tin all Over
GT	-10µ Gold on Contact Area/ Matte Tin on Tail
H	-30µ Gold on Contact Area/ Matte Tin on Tail
F	-Gold Flash over Entire Pin
FT	-Gold Flash on Contact Area/ Matte Tin on Tail

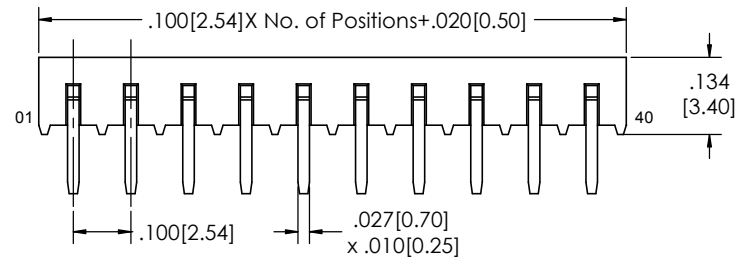
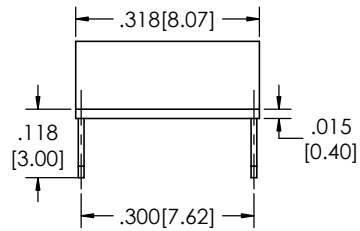
Pin Options	
Horizontal Entry	08

Specifications:
Insertion Depth: .145[3.68] to .250[6.35]
Insertion Force- Per Contact- H Plating: 5oz.[1.39N] avg with .025[0.64mm] Sq. pin
Withdrawal Force- Per Contact- H Plating: 3oz.[0.83N] abg with .025[0.64mm] Sq. pin
Current Rating: 3.0 Ampere
Insulation Resistance: 5000M Ohms Min.
Dielectric Withstanding: 500V AC
Contact Resistance: 20M Ohms Max.
Operation Temperature: -40°C to +105°C
Max. Process Temperature
Peak: 260°C up to 20 secs.
Process: 230°C up to 60 secs.
Wave: 260°C up to 6 secs.
Manual Solder: 350°C up to 5 secs.

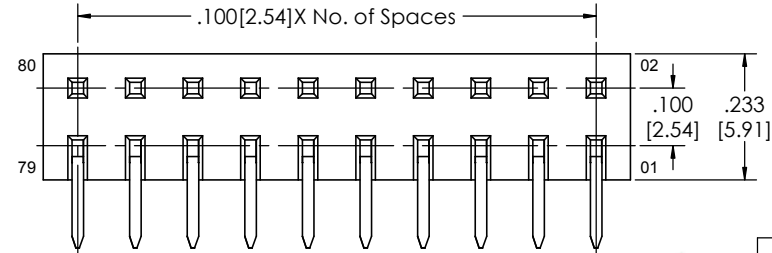
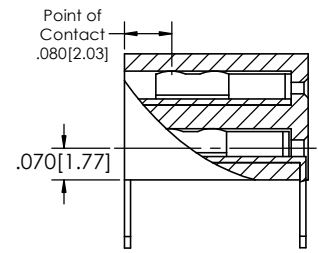
Materials:
Contact Material: Phosphor Bronze
Insulator Material: Nylon 6T
Plating: Au or Sn over 50µ" (1.27 Ni)

Tails may be clipped to achieve specific dimensions.
Products cut to specific sizes are uncancellable/ nonreturnable.
Parts are subject to change without notice.

SINGLE ROW



DOUBLE ROW



PROPRIETARY AND CONFIDENTIAL
THE INFORMATION CONTAINED IN THIS DRAWING IS THE SOLE PROPERTY OF Major League Electronics. ANY REPRODUCTION IN PART OR AS A WHOLE WITHOUT THE WRITTEN PERMISSION OF Major League Electronics IS PROHIBITED.

UNLESS OTHERWISE SPECIFIED:		NAME	DATE
DIMENSIONS ARE IN INCHES		DRAWN	EOW 01/20/15
TOLERANCES:		CHECKED	GWE 01/20/15
ONE DECIMALS ±.100		ENG APPR.	
TWO DECIMAL ±.010		MFG APPR.	
THREE DECIMAL ±.005		ADDRESS:	2533 Centennial Blvd. Jeffersonville, IN 47130
FOUR DECIMAL ±.002		MATERIAL:	Phone: 812-670-4174
FINISH	FINISH	E-Mail: mle@mlelectronics.com	Fax: 812-670-4175
APPLICATION	DO NOT SCALE DRAWING	TITLE: BCSS-1-H Series	
		SIZE	DWG. NO.
		C	B
		SCALE 6:1	SHEET 1 OF 1

