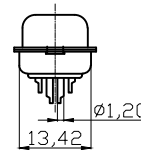
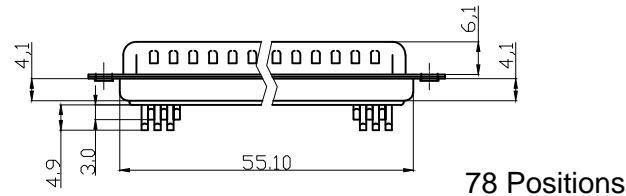
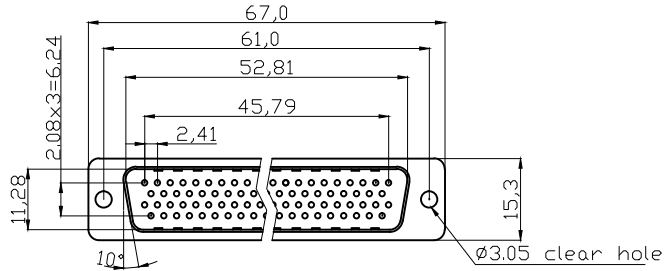
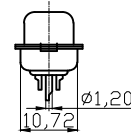
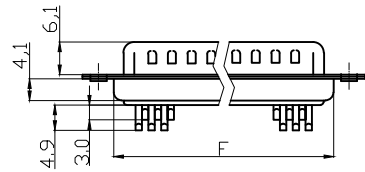
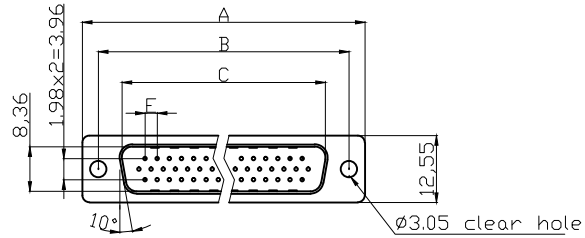


**Male**



**NOTES:**

**Material**

Insulator Material: Glass-filled thermoplastic PBT, UL94V-0 rated, Black  
 Contact Material: Copper alloy, Gold flash selective gold plating  
 Shell: Steel, 100 µ" Tin Over 50µ" min Copper

**Electrical**

- Contact Resistance: 20m ohms Max at 1 AMP DC.
- Insulation Resistance: 1000M ohms at 500 VDC
- Withstanding Voltage: 1000 VAC/rms 60Hz for 1 minute
- Current Rating: 3 AMP
- Voltage Rating: 250 VAC/rms 60Hz
- ① Durability: 250 mating cycles
- Operating Temperature: -20°C+85°C
- ② Wire gauge: 24-30AWG

③ Order Code:

A-HDx xx LL/Z - x  
 Contact style: F - Female, S - Male  
 No. of Contacts: 15 / 26 / 44 / 62  
 Blank - Without front nut  
 UNC1 - With front nut

**Dimensions**

| Positions | A     | B     | C     | E    | F     |
|-----------|-------|-------|-------|------|-------|
| 15        | 30.81 | 24.99 | 16.92 | 2.29 | 19.20 |
| 26        | 39.20 | 33.30 | 25.25 | 2.29 | 27.70 |
| 44        | 53.04 | 47.04 | 38.96 | 2.29 | 41.10 |
| 62        | 69.40 | 63.50 | 55.42 | 2.41 | 57.30 |

**RoHS compliant**

Unit: mm

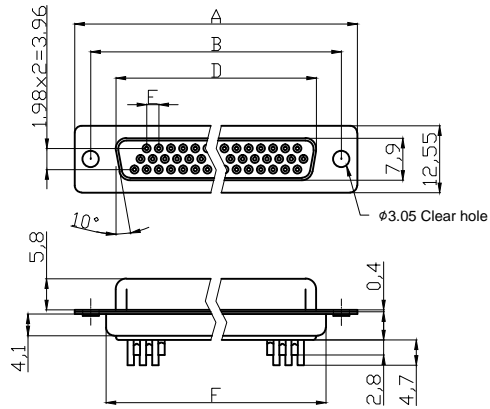


File No.: E198287

| Scale     | Free  |     |                             |            |        | Date     | Name        | Customer-No.    |
|-----------|-------|-----|-----------------------------|------------|--------|----------|-------------|-----------------|
| TOLERANCE |       |     |                             |            |        | Drawn    | 15.08.2012  | Lucas           |
| X.        | ±0.38 | ③   | Add new type with front nut | 07.08.2019 | Xavier | Approved | 19.10.2017  | Winnie          |
| X.X       | ±0.25 | ②   | Add solder wire gauge       | 31.07.2019 | Xavier |          |             |                 |
| X.XX      | ±0.13 | ①   | Add the mating cycles       | 19.10.2017 | Winnie |          |             |                 |
| DIM       | TOL   | ①   | Add the mating cycles       | 19.10.2017 | Winnie |          |             |                 |
| X.°       | ±3°   | ①   | Add the mating cycles       | 19.10.2017 | Winnie |          |             |                 |
| X.X°      | ±1.0° | ①   | Drawn                       | 15.08.2012 | Lucas  |          |             |                 |
| Angle     | TOL   | Id. | Modification                | Date       | Name   |          |             | Drawing-No.     |
|           |       |     |                             |            |        |          |             | ASSMANN WSW-No. |
|           |       |     |                             |            |        |          |             | A-HDS xx LL/Z   |
|           |       |     |                             |            |        |          | ASS 4895 CO | rev03           |
|           |       |     |                             |            |        |          | Replace     | Sheet 1/4       |



# Female



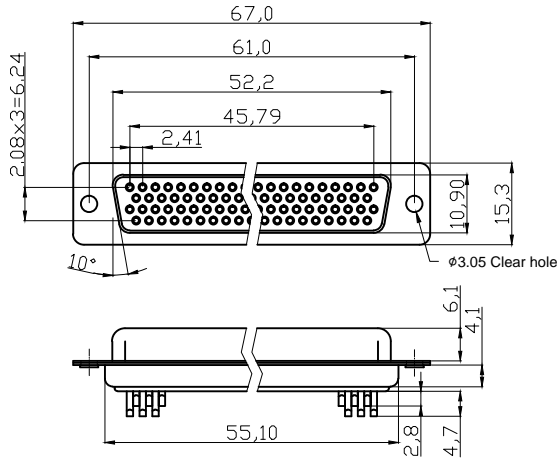
### NOTES:

#### Material

Insulator Material: Glass-filled thermoplastic PBT, UL94V-0 rated, Black  
 Contact Material: Copper alloy, Gold flash selective gold plating  
 Shell: Steel, 100 μ" Tin Over 50μ" min Copper

#### Electrical

- Contact Resistance: 20m ohms Max at 1 AMP DC.
- Insulation Resistance: 1000M ohms at 500 VDC
- Withstanding Voltage: 1000 VAC/rms 60Hz for 1 minute
- Current Rating: 3 AMP
- Voltage Rating: 250 VAC/rms 60Hz
- ① Durability: 250 mating cycles
- Operating Temperature: -20°C+85°C
- ② Wire gauge: 24-30AWG



### Dimensions

| Positions | A     | B     | D     | E    | F     |
|-----------|-------|-------|-------|------|-------|
| 15        | 30.81 | 24.99 | 16.33 | 2.29 | 19.20 |
| 26        | 39.20 | 33.30 | 24.70 | 2.29 | 27.70 |
| 44        | 53.04 | 47.04 | 38.40 | 2.29 | 41.10 |
| 62        | 69.40 | 63.50 | 54.80 | 2.41 | 57.30 |

78 Positions

**RoHS compliant**

Unit: mm



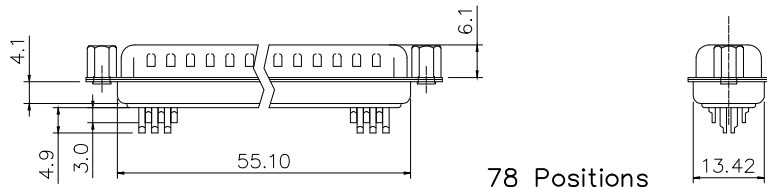
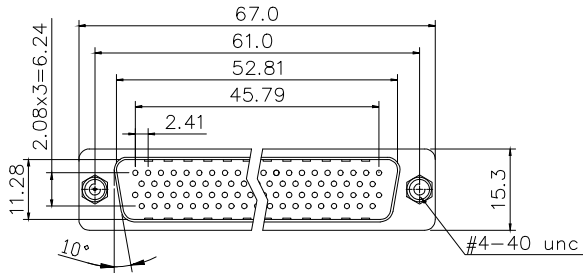
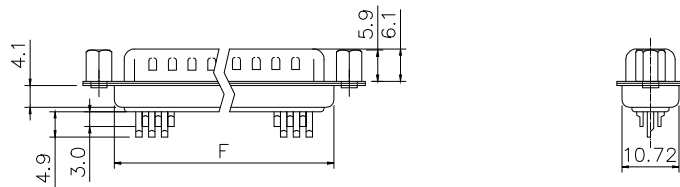
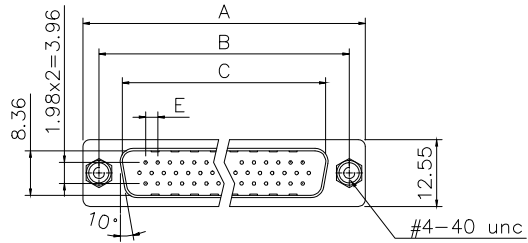
File No.: E198287

| Scale     | Free  |     |                             |            |        | Date       | Name       | Customer-No. |
|-----------|-------|-----|-----------------------------|------------|--------|------------|------------|--------------|
| TOLERANCE |       |     |                             |            | Drawn  | 15.08.2012 | Lucas      |              |
| X.        | ±0.38 | ③   | Add new type with front nut | 07.08.2019 | Xavier | Approved   | 19.10.2017 | Winnie       |
| X.X       | ±0.25 | ②   | Add solder wire gauge       | 31.07.2019 | Xavier |            |            |              |
| X.XX      | ±0.13 | ①   | Add the mating cycles       | 19.10.2017 | Winnie |            |            |              |
| DIM       | TOL   | ①   |                             |            |        |            |            |              |
| X.°       | ±3°   | ①   |                             |            |        |            |            |              |
| X.X°      | ±1.0° | ①   | Drawn                       | 15.08.2012 | Lucas  |            |            |              |
| Angle     | TOL   | Id. | Modification                | Date       | Name   |            |            |              |
|           |       |     |                             |            |        |            |            |              |

|                               |           |
|-------------------------------|-----------|
| Customer-No.                  |           |
| ASSMANN WSW-No. A-HDF xx LL/Z |           |
| Drawing-No.                   | rev03     |
| ASS 4895 CO                   | Sheet 2/4 |
| Replace                       |           |



**Male**



**78 Positions**

**NOTES:**

**Material**

Insulator Material: Glass-filled thermoplastic PBT, UL94V-0 rated, Black  
 Contact Material: Copper alloy, Gold flash selective gold plating  
 Shell: Steel, 100 μ" Tin Over 50μ" min Copper  
 Clinch nut: Brass, Nickel plated

**Electrical**

Contact Resistance: 20m ohms Max at 1 AMP DC.  
 Insulation Resistance: 1000M ohms at 500 VDC  
 Withstanding Voltage: 1000 VAC/rms 60Hz for 1 minute  
 Current Rating: 3 AMP  
 Voltage Rating: 250 VAC/rms 60Hz  
 Durability: 250 mating cycles  
 Operating Temperature: -20°C+85°C  
 Wire gauge: 24-30AWG

**Dimensions**

| Positions | A     | B     | C     | E    | F     |
|-----------|-------|-------|-------|------|-------|
| 15        | 30.81 | 24.99 | 16.92 | 2.29 | 19.20 |
| 26        | 39.20 | 33.30 | 25.25 | 2.29 | 27.70 |
| 44        | 53.04 | 47.04 | 38.96 | 2.29 | 41.10 |
| 62        | 69.40 | 63.50 | 55.42 | 2.41 | 57.30 |

**RoHS compliant**

Unit: mm



File No.: E198287

| Scale     | Free  |     |                             |            |        | Date       | Name   | Customer-No.                            |
|-----------|-------|-----|-----------------------------|------------|--------|------------|--------|---|
| TOLERANCE |       |     |                             |            |        | 15.08.2012 | Lucas  |   |
| X.        | ±0.38 |     |                             |            |        |            |        |   |
| X.X       | ±0.25 | ③   | Add new type with front nut | 07.08.2019 | Xavier | 19.10.2017 | Winnie | ASSMANN WSW-No.<br>③ A-HDS xx LL/Z-UNC1 |
| X.XX      | ±0.13 | ②   | Add solder wire gauge       | 31.07.2019 | Xavier |            |        |   |
| DIM       | TOL   | ①   | Add the mating cycles       | 19.10.2017 | Winnie |            |        | Drawing-No.                             |
| X.°       | ±3°   |     |                             |            |        |            |        | <b>ASS 4895 CO</b>                      |
| X.X°      | ±1.0° | ④   | Drawn                       | 15.08.2012 | Lucas  |            |        | rev03                                   |
| Angle     | TOL   | Id. | Modification                | Date       | Name   |            |        | Sheet<br>3/4                            |



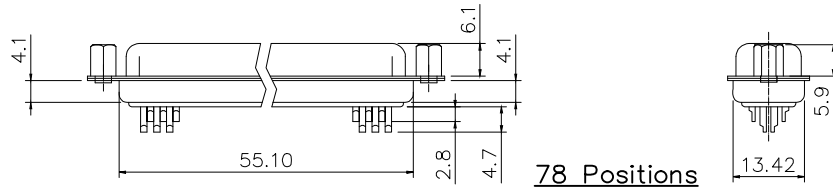
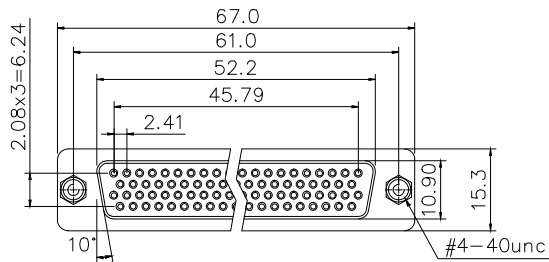
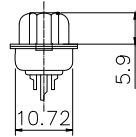
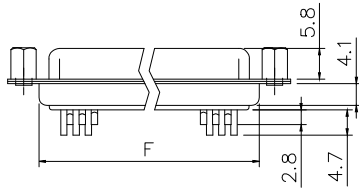
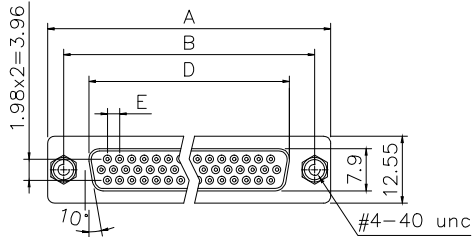
**ASS 4895 CO**

rev03

Replace

Sheet  
3/4

# Female



## NOTES:

### Material

Insulator Material: Glass-filled thermoplastic PBT, UL94V-0 rated, Black  
 Contact Material: Copper alloy, Gold flash selective gold plating  
 Shell: Steel, 100 μ" Tin Over 50μ" min Copper  
 Clinch nut: Brass, Nickel plated

### Electrical

Contact Resistance: 20m ohms Max at 1 AMP DC.  
 Insulation Resistance: 1000M ohms at 500 VDC  
 Withstanding Voltage: 1000 VAC/rms 60Hz for 1 minute  
 Current Rating: 3 AMP  
 Voltage Rating: 250 VAC/rms 60Hz  
 Durability: 250 mating cycles  
 Operating Temperature: -20°C+85°C  
 Wire gauge: 24-30AWG

### Dimensions

| Positions | A     | B     | D     | E    | F     |
|-----------|-------|-------|-------|------|-------|
| 15        | 30.81 | 24.99 | 16.33 | 2.29 | 19.20 |
| 26        | 39.20 | 33.30 | 24.70 | 2.29 | 27.70 |
| 44        | 53.04 | 47.04 | 38.40 | 2.29 | 41.10 |
| 62        | 69.40 | 63.50 | 54.80 | 2.41 | 57.30 |

**RoHS compliant**

Unit: mm



File No.: E198287

| Scale     | Free  |     |                             |            |        | Date     | Name       | Customer-No. |
|-----------|-------|-----|-----------------------------|------------|--------|----------|------------|--------------|
| TOLERANCE |       |     |                             |            |        | Drawn    | 15.08.2012 | Lucas        |
| X.        | ±0.38 |     |                             |            |        |          |            |              |
| X.X       | ±0.25 | ③   | Add new type with front nut | 07.08.2019 | Xavier | Approved | 19.10.2017 | Winnie       |
| X.XX      | ±0.13 | ②   | Add solder wire gauge       | 31.07.2019 | Xavier |          |            |              |
| DIM       | TOL   | ①   | Add the mating cycles       | 19.10.2017 | Winnie |          |            |              |
| X.°       | ±3°   |     |                             |            |        |          |            |              |
| X.X°      | ±1.0° | ④   | Drawn                       | 15.08.2012 | Lucas  |          |            |              |
| Angle     | TOL   | Id. | Modification                | Date       | Name   |          |            |              |

ASSMANN WSW-No.  
 ③ A-HDF xx LL/Z-UNC1

Drawing-No.  
**ASS 4895 CO** rev03

Replace  
 Sheet 4/4