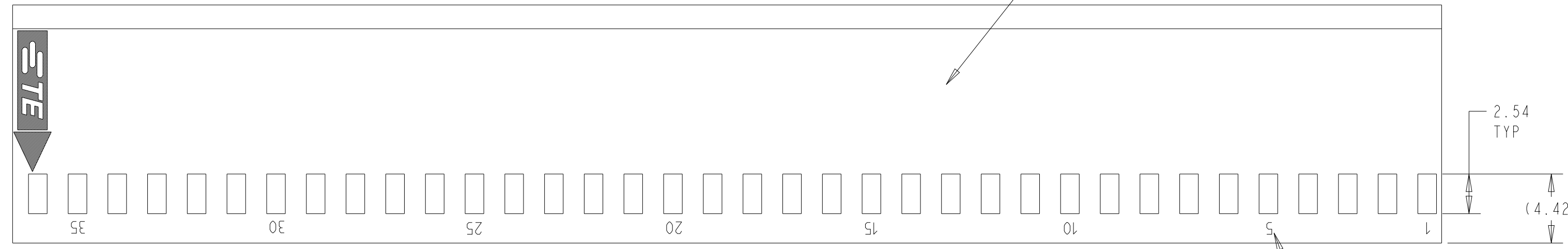
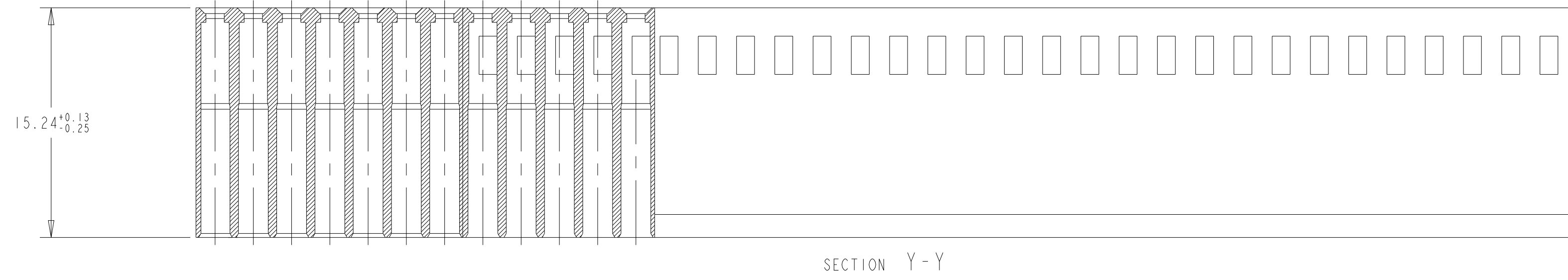
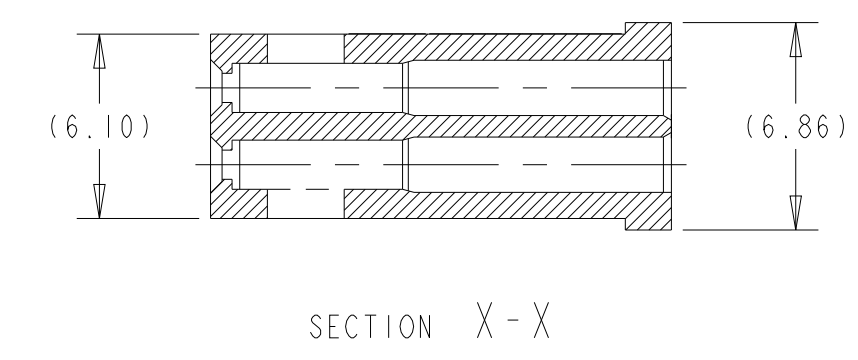
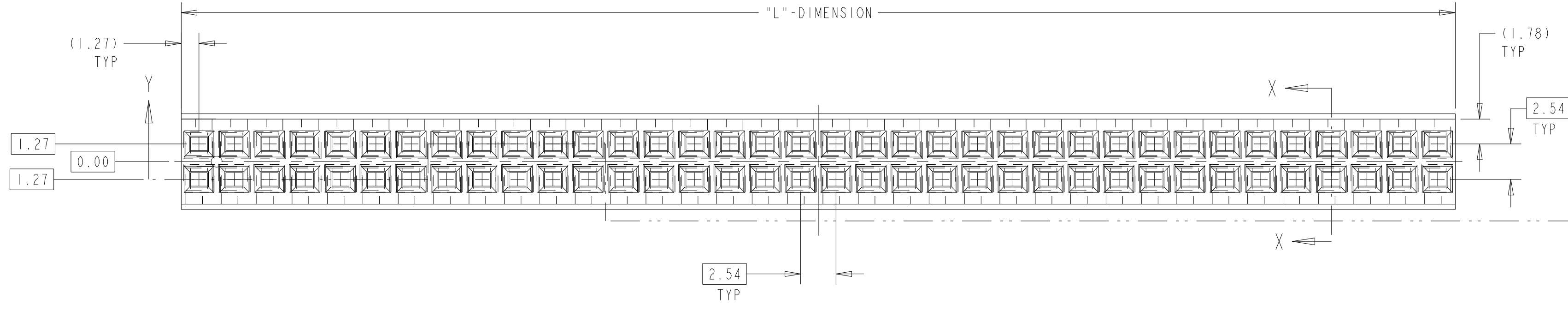


REVISIONS					
P	LTN	DESCRIPTION	DATE	OWN	APVD
P2		REVISED PER ECO-11-004587	11MAR11	RK	HMR
R		REVISED PER ECO-18-000976	13APR2018	RS	JO
S		REVISED PER ECR-22-132152	15JUN2022	RK	SD

- 1 MATERIAL: GLASS FILLED THERMOPLASTIC, UL 94-V0 RATED, COLOR: BLACK
- 2 'TE' PART NUMBER AND DATE CODE MARKED WHEN HOUSING SIZE PERMITS.
- 3 1.17±, 38 CHARs. MARKED FIRST AND EVERY 5TH CAVITY, ONE SIDE.
- 4 OBSOLETE PARTS; OBSOLETE CIS STREAMLINING PER D.RENAUD/D.SINISI
- 5. THE PRODUCT IS IN PROCESS FOR UL RECOGNITION.
- 6. THE PRODUCT IS IN PROCESS FOR QUALIFICATION, AND IS NOT YET QUALIFIED

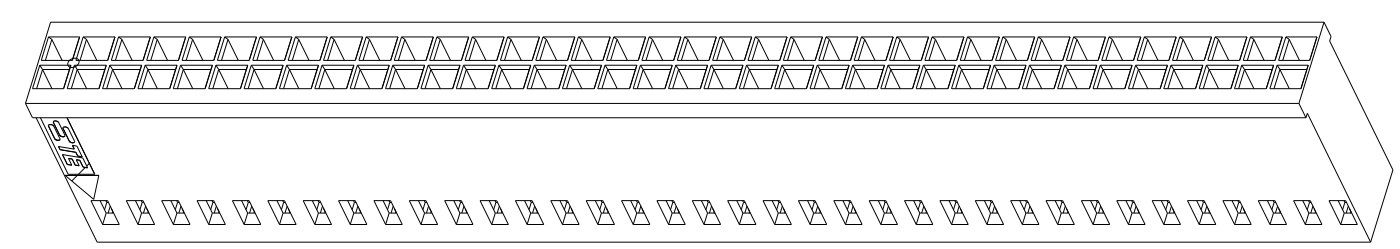


LONGEST POSITION SHOWN

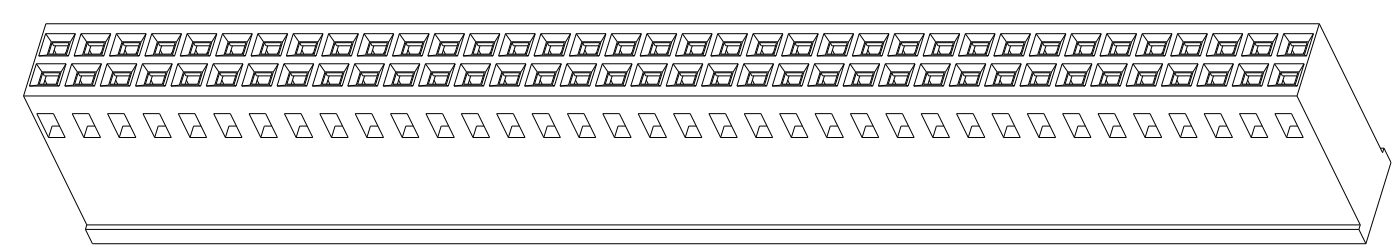


MARKING	UNMARKED HOUSING PART NUMBER	"L" DIM	NUMBER OF SPACES	NUMBER OF POSITIONS	MARKED HOUSING PART NUMBER
ALL	6-87456-5	81.28	31	64	6-87456-6
ALL	6-87456-3	73.66	28	58	6-87456-4
ALL	6-87456-1	71.12	27	56	6-87456-2
ALL	5-87456-9	60.96	23	48	6-87456-0
ALL	5-87456-7	83.82	32	66	5-87456-4
ALL	5-87456-5	88.90	34	70	5-87456-6
ALL	5-87456-3	-	-	2	-
ALL	5-87456-1	76.20	29	60	5-87456-2
ALL	4-87456-9	5.08	1	4	5-87456-0
ALL	4-87456-7	91.44	35	72	4-87456-8
ALL	4-87456-5	68.58	26	54	4-87456-6
ALL	4-87456-3	53.34	20	42	4-87456-4
ALL	4-87456-1	66.04	25	52	4-87456-2
ALL	3-87456-9	63.50	24	50	4-87456-0
ALL	3-87456-7	55.88	21	44	3-87459-8
ALL	3-87456-5	50.80	19	40	3-87456-6
ALL	3-87456-3	48.26	18	38	3-87456-4
ALL	3-87456-1	45.72	17	36	3-87456-2
ALL	2-87456-9	43.18	16	34	3-87456-0
ALL	2-87456-7	40.64	15	32	2-87456-8
ALL	2-87456-5	38.10	14	30	2-87456-6
ALL	2-87456-3	35.56	13	28	2-87456-4
ALL	2-87456-1	33.02	12	26	2-87456-2
ALL	1-87456-9	30.48	11	24	2-87456-0
ALL	1-87456-7	27.94	10	22	1-87456-8
ALL	1-87456-5	25.40	9	20	1-87456-6
ALL	1-87456-3	22.86	8	18	1-87456-4
ALL	1-87456-1	20.32	7	16	1-87456-2
ALL	87456-9	17.78	6	14	1-87456-0
ALL	87456-7	15.24	5	12	87456-8
NO PART #	87456-5	12.70	4	10	87456-6
NO PART #	87456-3	10.16	3	8	87456-4
NOTE# 6	87456-1	7.62	2	6	87456-2

ISOMETRIC VIEW



SCALE 2:1



SCALE 2:1

THIS DRAWING IS A CONTROLLED DOCUMENT.

OWN: E. BRANDENBERG 11-06-92  
 CHK: J. GESEFORD 11-30-92  
 APVD: J. GESEFORD 11-30-92

TE Connectivity

MOD IV CRIMP SNAP-IN CONNECTOR, DOUBLE ROW, 2.54 CENTERS, SHORT ENTRY

SIZE: A | CAGE CODE: 00779 | DRAWING NO: 87456 | RESTRICTED TO: -

CUSTOMER DRAWING | SCALE: 4:1 | SHEET: 1 OF 1 | REV: S