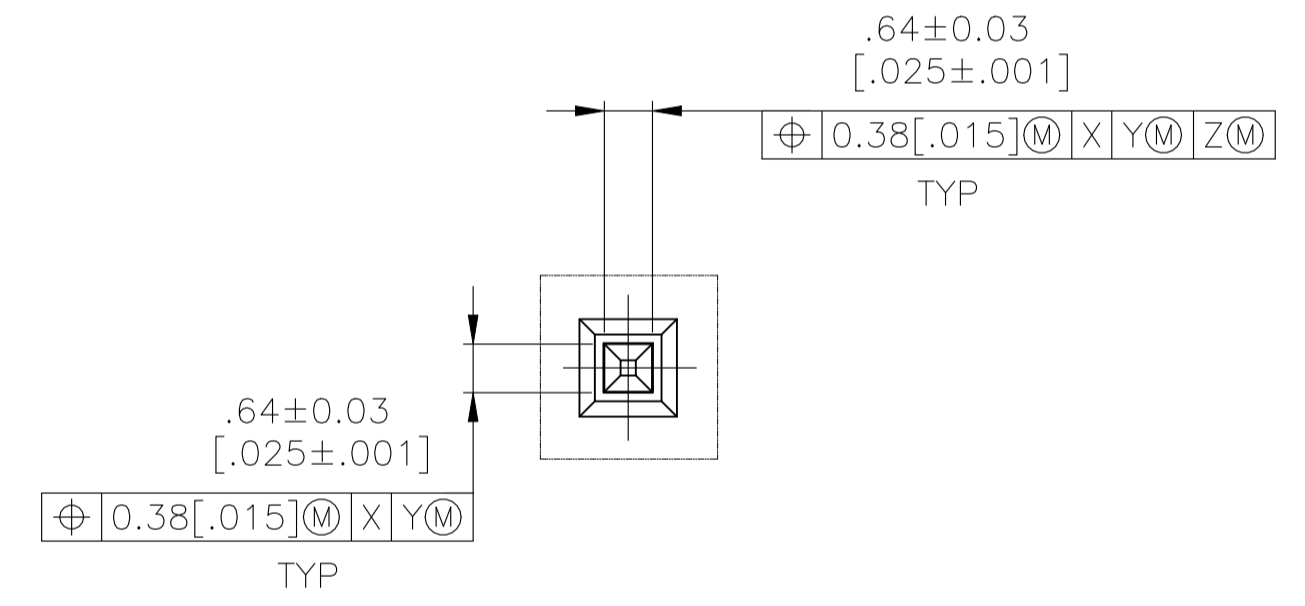
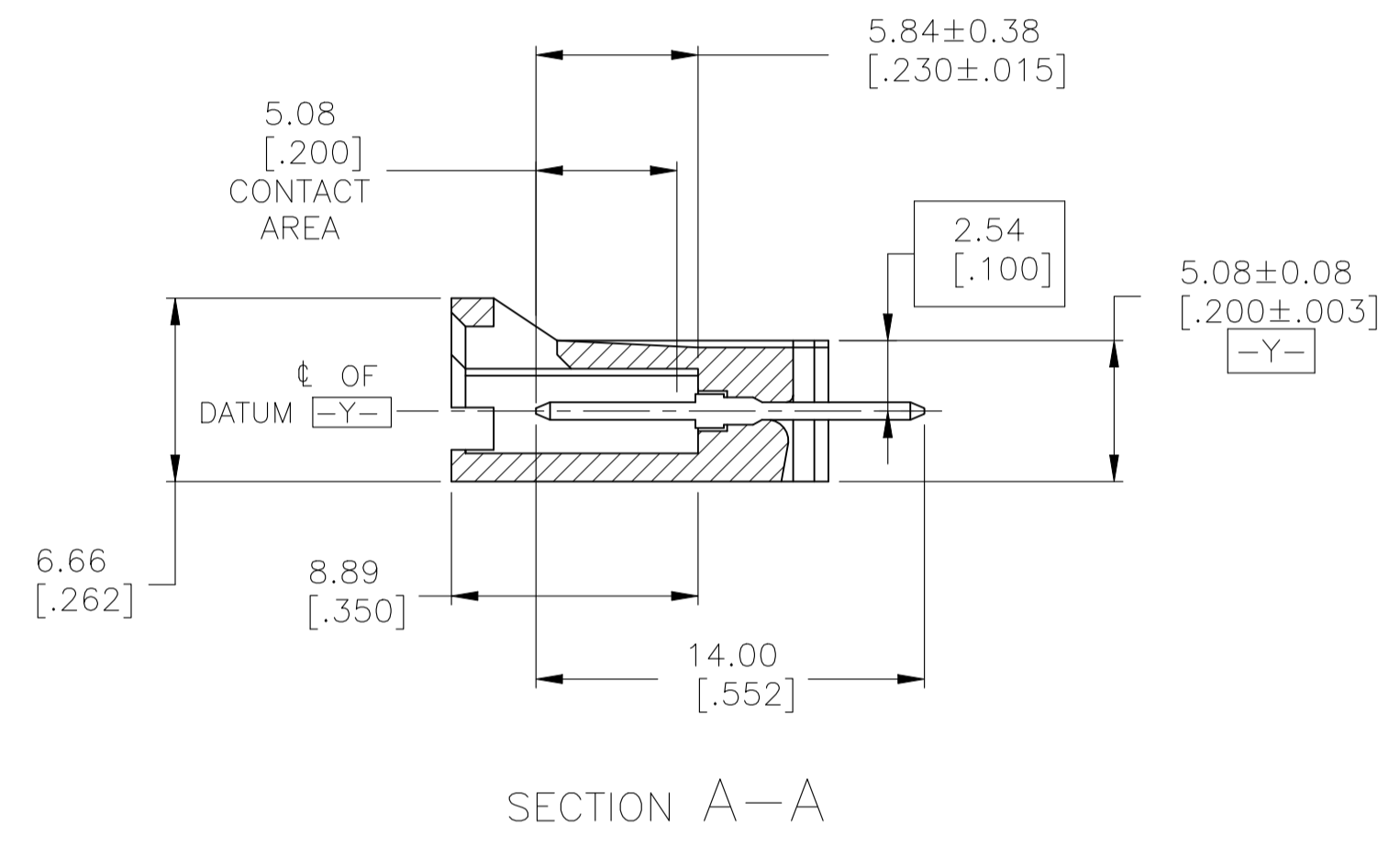
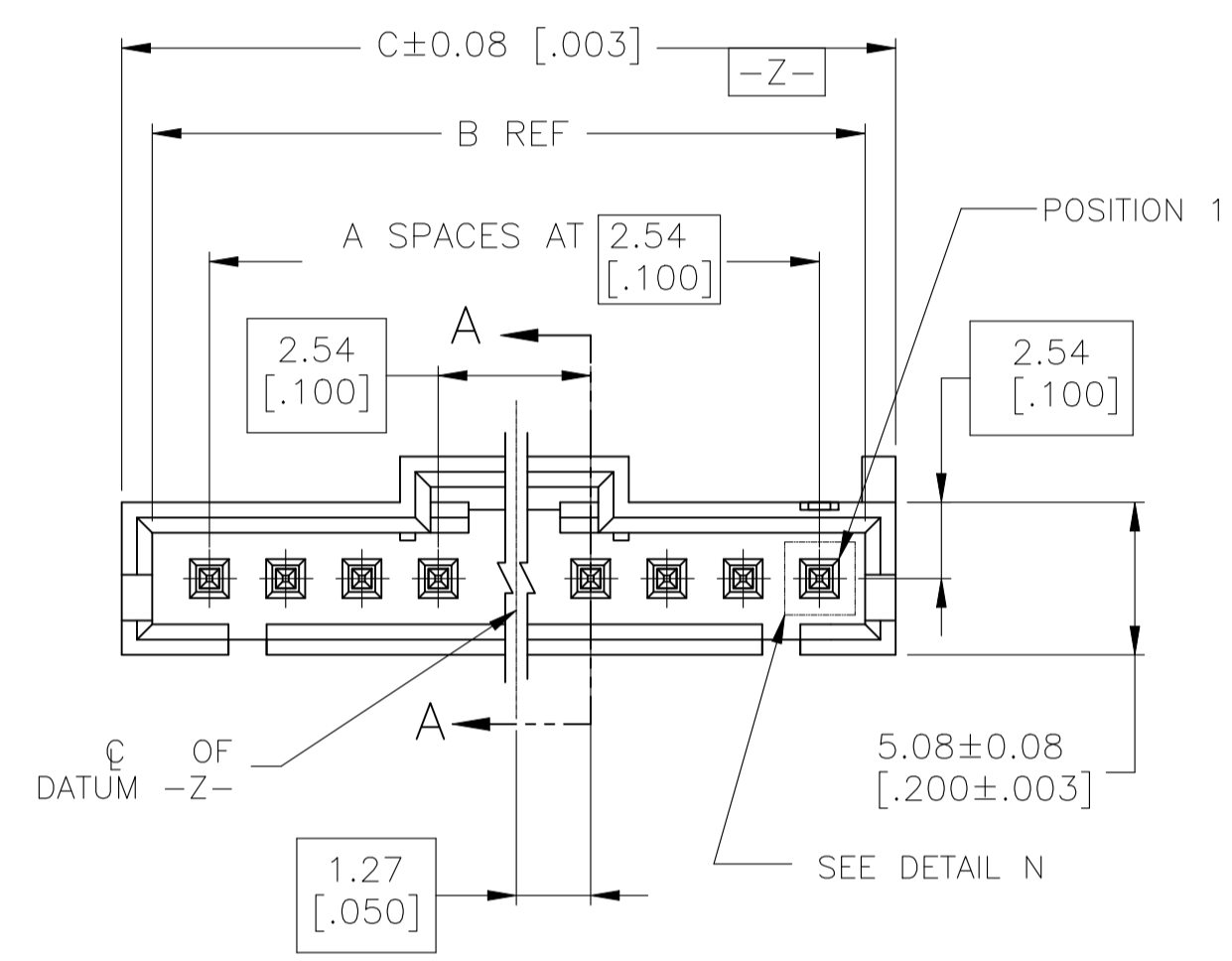
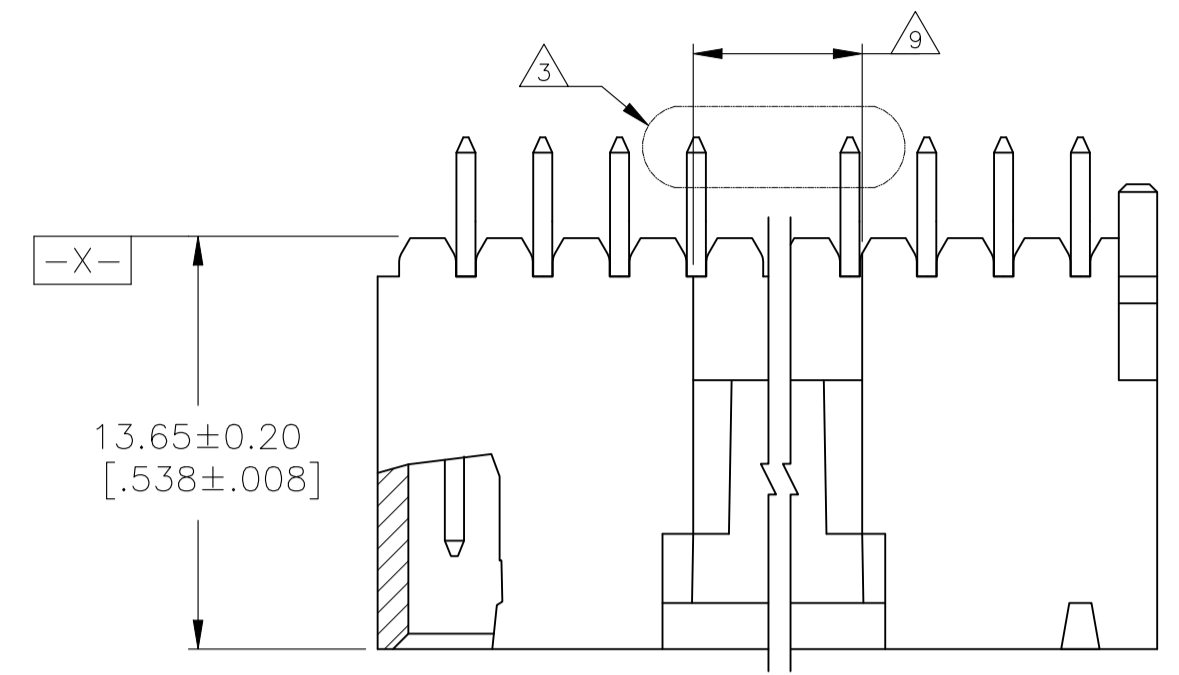
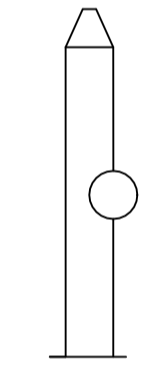


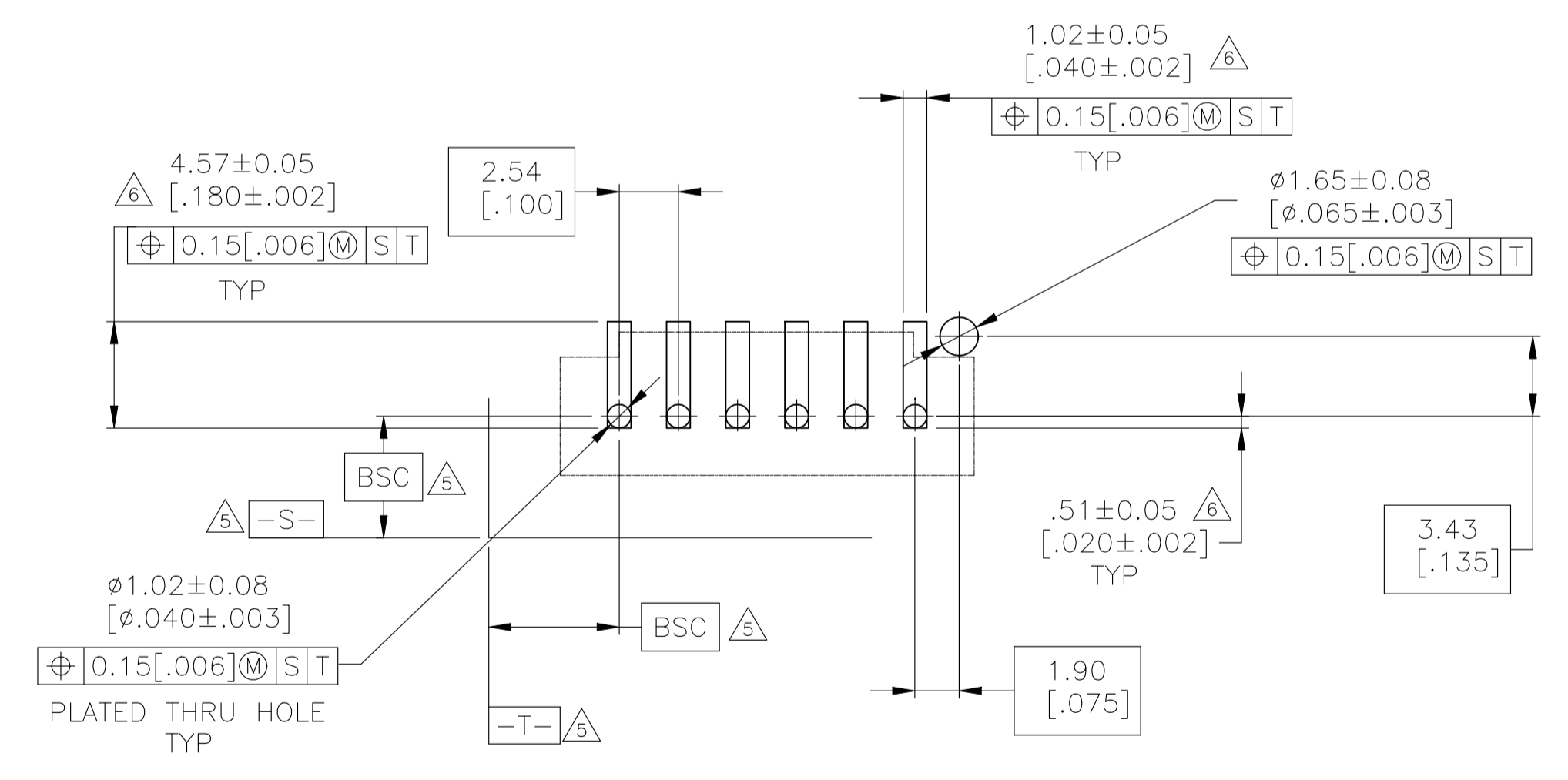
REVISIONS				
REV	DESCRIPTION	DATE	BY	APP'D
F	REVISED PER ECO-20-001327	04JUN2020	SB	JO



DETAIL N
SCALE 10:1



DETAIL Z
POST DETAIL TYP
2 POST MINIMUM
SCALE 10:1



RECOMMENDED PC BOARD MOUNTING DIMENSIONS
RECOMMENDED STENCIL THICKNESS = 0.25[.010]

- 1 HOUSING: LCP, COLOR-BLACK.
POST: BRASS
- 2 FINISH:0.00076 [.000030] MIN GOLD ON THE CONTACT AREA, 0.00254 [.000100] MIN MATTE TIN-LEAD ON REMAINDER OF CONTACT, ALL OVER 0.00127 [.000050] NICKEL.
- 3 SELECT POST TAILS FORMED TO PROVIDE CONNECTOR HOLD DOWN UNTIL SOLDERED, CONFIGURATION ACCEPTS 0.69-2.03 [.027-.080] THICK PRINTED CIRCUIT BOARD.(SEE DETAIL Z)
- 4 PARTS ARE PACKAGED IN GANG TUBES.
- 5 DATUMS AND BASIC DIMENSIONS ESTABLISHED BY CUSTOMER.
- 6 DIMENSIONS NOTED ARE FOR SOLDER STENCIL LAYOUT FOR USE WITH 1.58±0.20 [.062±.008] THICK PRINTED CIRCUIT BOARDS.
- 7 PRELIMINARY PART-NOT RELEASED FOR PRODUCTION.
- 8 FINISH:0.00076 [.000030] MIN GOLD ON THE CONTACT AREA, 0.00254 [.000100] MIN MATTE TIN ON REMAINDER OF CONTACT, ALL OVER 0.00127 [.000050] NICKEL.
- 9 0.25 [.010] RECESS PERMISSIBLE IN THIS AREA FOR MOLD SHUT OFF

8	27.81 [1.095]	25.91 [1.020]	9	10	5-147245-9
8	22.73 [.895]	20.83 [.820]	7	8	5-147245-7
8	7.49 [.295]	5.59 [.220]	1	2	5-147245-1
7	27.81 [1.095]	25.91 [1.020]	9	10	147245-9
7	22.73 [.895]	20.83 [.820]	7	8	147245-7
2	7.49 [.295]	5.59 [.220]	1	2	147245-1
PLATING	C	B	A	NO. OF POSN	PART NO.

THIS DRAWING IS A CONTROLLED DOCUMENT.

DIMENSIONS: mm [INCHES]	TOLERANCES UNLESS OTHERWISE SPECIFIED:	0 PLC ± -	1 PLC ± -	2 PLC ± -	3 PLC ± 0.13[.005]	4 PLC ± -	ANGLES ± -
SEE TABLE		MATERIAL		WEIGHT		CUSTOMER DRAWING	

DIN 9130	01APR99	TE Connectivity	
CHK J. GEFOR	02APR99	NAME	
APVD J. GEFOR	02APR99	PRODUCT SPEC	
APPLICATION SPEC		SIZE	
WEIGHT		SCALE 4:1	
CUSTOMER DRAWING		SHEET 1 of 1	

HEAD ASSEMBLY, SINGLE ROW, VERTICAL, 2.54 [.100] CL, 0.64 [.025] SQ POST, LATCHING WITH HOLD DOWN, MTE AMPMODU

SIZE: A1 00779 C=147245