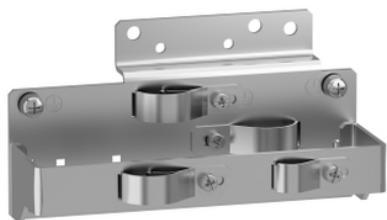


Product data sheet

Characteristics

VW3A47802

Altivar Easy 610, Altivar Process ATV600,
Altivar Process ATV900, EMC plate, 7.5
kW...11 kW



Main

Range of Product	Altivar Easy 610 Altivar Process ATV600 Altivar Process ATV900
Accessory / Separate Part Type	Mounting plate
Accessory / separate part category	Mounting and fixing accessory
Product compatibility	ATV610 variable speed drive 11 kW ATV610 variable speed drive 7.5 kW ATV630 variable speed drive 11 kW ATV630 variable speed drive 7.5 kW ATV930 variable speed drive 11 kW ATV930 variable speed drive 7.5 kW
Accessory / separate part destination	Variable speed drive

Complementary

Kit composition	Screws 1 EMC plate bottom 1 EMC plate top clamps
Net Weight	0.95 lb(US) (0.43 kg)

Ordering and shipping details

Category	22184 - ATV340 ACCESSORIES
Discount Schedule	CP4B
GTIN	3606480736452
Nbr. of units in pkg.	1
Package weight(Lbs)	17.28 oz (490 g)
Returnability	No
Country of origin	CN

Packing Units

Unit Type of Package 1	PCE
Package 1 Height	3.11 in (79 mm)
Package 1 width	2.32 in (59 mm)
Package 1 Length	5.91 in (150 mm)
Unit Type of Package 2	S04
Number of Units in Package 2	16
Package 2 Weight	19.40 lb(US) (8.798 kg)
Package 2 Height	11.81 in (30 cm)
Package 2 width	15.75 in (40 cm)
Package 2 Length	23.62 in (60 cm)

The information provided in this documentation contains general descriptions and/or technical characteristics of the performance of the products contained herein. This documentation is not intended as a substitute for and is not to be used for determining suitability or reliability of these products for specific user applications. It is the duty of any such user or integrator to perform the appropriate and complete risk analysis, evaluation and testing of the products with respect to the relevant specific application or use thereof. Neither Schneider Electric Industries SAS nor any of its affiliates or subsidiaries shall be responsible or liable for misuse of the information contained herein.