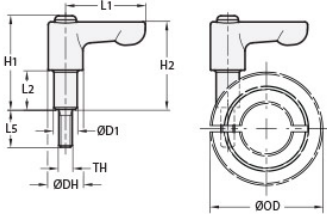




## LF30-CL-M4:12-ZS-O

Ruland Flat Orange Adjustable Lever, Lever Length 30mm, Stud Thread M4, Stud Length 12mm, Sleeve Length 12mm, Zinc Lever, Stainless Steel Inserts




### Description

Ruland LF30-CL-M4:12-ZS-O is an adjustable clamping lever with a 30mm long flat handle, M4 threaded stud, 12mm stud length, 12mm sleeve, and 32mm overall height. The threaded stud is designed to replace standard M4x12 hardware in Ruland one- and two-piece shaft collars. Once installed on the shaft collar, the lever is turned until the user reaches their desired torque. It does not require any tools to install, making it ideal for applications that require frequent setup changes and adjustments. LF30-CL-M4:12-ZS-O is orange for safety and ease of identification. It is manufactured by Otto Ganter, stocked by Ruland, and RoHS3 and REACH compliant.

### Product Specifications

Thread (TH)	M4	Stud Length LS	12 mm
Lever Length L1	30 mm	Overall Height H1	32 mm
Hub Height H2	30 mm	Hub Diameter DH	13 mm
Thread Pitch	0.7 mm	Sleeve Length L2	12 mm
Sleeve Diameter D1	7.2 mm	Handle Material	Zinc
Handle Color	Orange	Insert and Screw Material	303 Stainless Steel
Weight (lbs)	0.063900	Manufacturer	JW Winco/ Otto Ganter
UPC	634529291733	Country of Origin	Germany
Tariff Code	8487.90.0080	UNSPC	31162807

**Note 1** Performance ratings are for guidance only. The user must determine suitability for a particular application.

**Prop 65**  **WARNING** This product can expose you to chemicals including Soots, Benzene, Lead, and Nickel (metallic), known to the State of California to cause cancer, and Lead and Benzene known to the State of California to cause birth defects or other reproductive harm. For more information go to [www.P65Warnings.ca.gov](http://www.P65Warnings.ca.gov).